

## Altec Lansing MZX300-BLK

# Altec Lansing MZX300-BLK Wireless Over Ear Bluetooth Headphones

Model: MZX300-BLK

## INTRODUCTION

The Altec Lansing MZX300-BLK Wireless Over Ear Bluetooth Headphones are designed for comfortable, high-quality audio playback with wireless freedom. Featuring a long-lasting battery and robust connectivity, these headphones are suitable for various activities, from daily commutes to workouts.

Key features include:

- Up to 6 hours of battery life on a single charge.
- 33-foot wireless Bluetooth range for flexible movement.
- IPX7 waterproof rating, making them suitable for active use.
- Padded headband and soft ear cups for extended comfort.
- Integrated microphone for hands-free calls.
- Compatibility with Apple, Android, tablets, and laptops.

## PRODUCT COMPONENTS

The package includes the following items:

- Altec Lansing MZX300-BLK Wireless Over Ear Bluetooth Headphones
- USB Charging Cable
- Carry Pouch



*Figure 1: Front view of the Altec Lansing MZX300-BLK headphones.*



*Figure 2: The MZX300-BLK headphones shown with a smartphone, illustrating their size and typical use.*

## SETUP

---

### 1. Charging the Headphones

Before initial use, fully charge your MZX300-BLK headphones. Use the provided USB charging cable to connect the headphones to a USB power source (e.g., computer USB port, wall adapter). The charging indicator light will illuminate during charging and turn off or change color when fully charged. A full charge provides approximately 6 hours of playback time.





*Figure 3: Top view of the right earcup, showing the control panel and typically where the charging port is located.*

## **2. Powering On/Off**

- **To Power On:** Press and hold the Power button (often integrated with the multi-function button) until you hear an audible prompt or see the indicator light flash.
- **To Power Off:** Press and hold the Power button again until the indicator light turns off or you hear an audible prompt.

## **3. Bluetooth Pairing**

1. Ensure the headphones are powered off.
2. Press and hold the Power button for approximately 5-7 seconds until the indicator light flashes rapidly (often

blue and red), indicating pairing mode.

3. On your device (smartphone, tablet, laptop), navigate to the Bluetooth settings.
4. Search for available devices. The headphones should appear as "MZX300" or "Altec MZX300".
5. Select the headphones from the list to connect. Once paired, the indicator light will typically slow its flashing or turn solid blue, and you may hear a confirmation tone.

The headphones support multi-point connection, allowing you to connect to two devices simultaneously.

#### 4. Adjusting Fit

The headband is adjustable. Gently slide the earcups up or down to extend or retract the headband until the headphones fit comfortably over your ears, ensuring the earcups fully enclose your ears for optimal sound and comfort.



*Figure 4: The adjustable headband of the MZX300-BLK headphones, designed for a comfortable fit.*

## OPERATING INSTRUCTIONS

---

### Music Playback Controls

The headphones feature integrated controls on the earcup for easy management of your audio.

- **Play/Pause:** Press the multi-function button (often the power button) once.
- **Volume Up:** Press the '+' button.
- **Volume Down:** Press the '-' button.
- **Next Track:** Press and hold the '+' button (or double-press, refer to specific product manual if available).
- **Previous Track:** Press and hold the '-' button (or double-press, refer to specific product manual if available).



*Figure 5: Side view of the right earcup, highlighting the control buttons for media playback and volume.*

## **Call Management**

With the built-in microphone, you can manage phone calls directly from your headphones.

- **Answer/End Call:** Press the multi-function button once.
- **Reject Call:** Press and hold the multi-function button for approximately 2 seconds.

## Water Resistance (IPX7)

The MZX300-BLK headphones are IPX7 rated, meaning they can be submerged in up to 1 meter of water for 30 minutes. This makes them resistant to sweat and splashes, suitable for workouts or outdoor activities. **Note:** While water-resistant, it is not recommended to intentionally submerge the headphones or expose them to harsh chemicals.

## MAINTENANCE

- **Cleaning:** Use a soft, dry, lint-free cloth to clean the headphones. For stubborn dirt, slightly dampen the cloth with water. Do not use abrasive cleaners, alcohol, or chemical solvents.
- **Storage:** When not in use, store the headphones in the included carry pouch to protect them from dust and scratches. Avoid storing in extreme temperatures or high humidity.
- **Battery Care:** To prolong battery life, avoid fully discharging the battery frequently. Charge the headphones regularly, even if not used for extended periods.

## TROUBLESHOOTING

Problem	Possible Cause	Solution
Headphones do not power on.	Low battery.	Charge the headphones using the provided USB cable.
Cannot pair with device.	Headphones not in pairing mode; device's Bluetooth off; interference.	Ensure headphones are in pairing mode (rapid flashing light). Turn device's Bluetooth off and on. Move closer to the device. Clear previous Bluetooth connections on your device.
No sound or low volume.	Volume too low on headphones or device; not properly connected.	Increase volume on both headphones and connected device. Repair the headphones. Ensure the correct audio output is selected on your device.
Poor sound quality.	Out of range; interference; low battery.	Move closer to your device. Avoid strong electromagnetic interference. Charge the headphones.

## SPECIFICATIONS

Model Name	MZX300
Connectivity Technology	Wireless (Bluetooth)
Wireless Range	Up to 33 feet (10 meters)
Battery Life	Up to 6 hours
Water Resistance Level	IPX7
Earpiece Shape	Over Ear
Control Type	Media Control, Remote
Headphones Jack	USB (for charging)
Item Weight	0.5 Pounds (approx. 8 ounces)

**Product Dimensions**

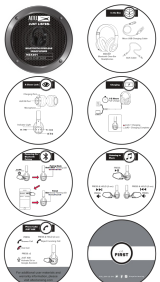



6.6 x 3.4 x 8.8 inches

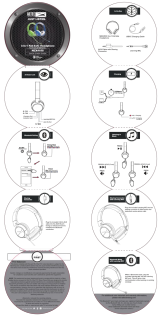
## WARRANTY AND SUPPORT

For warranty information and technical support, please refer to the documentation included with your purchase or visit the official Altec Lansing website. You may also contact Altec Lansing customer service directly for assistance with product operation, troubleshooting, or warranty claims.

**Altec Lansing Official Website:** [www.alteclansing.com](http://www.alteclansing.com)

### Related Documents - MZX300-BLK

	<p><a href="#">Altec Lansing MZX301 Bluetooth Over-Ear Headphones Quick Start Guide</a></p> <p>Quick start guide for Altec Lansing MZX301 Bluetooth Over-Ear Headphones, covering setup, charging, pairing, music playback, and call management.</p>
	<p><a href="#">Altec Lansing MZX5400 Nanophone ANC Wireless Headphones Quick Start Guide</a></p> <p>Get started with your Altec Lansing MZX5400 Nanophone ANC On-Ear Wireless Headphones. This quick start guide covers features, charging, Bluetooth pairing, controls, and using the conference microphone.</p>
	<p><a href="#">Altec Lansing ATP3 Computer Speaker System User Guide and Setup</a></p> <p>Comprehensive user guide for the Altec Lansing ATP3 computer speaker system, covering specifications, setup instructions, safety precautions, and control usage.</p>
	<p><a href="#">Altec Lansing MZX5400 Nanophone ANC Wireless Headphones Quick Start Guide</a></p> <p>Concise guide for Altec Lansing MZX5400 Nanophone ANC On Ear Wireless Headphones, covering setup, controls, Bluetooth pairing, and FCC compliance.</p>



[Altec Lansing MZX4100 3-in-1 Kid-Safe Headphones Quick Start Guide](#)

Quick start guide for the Altec Lansing MZX4100 3-in-1 Kid-Safe Headphones, covering setup, charging, Bluetooth pairing, listening to music, sharing audio, and FCC compliance information.



[Altec Lansing ACS65i Amplified Speaker System User Guide](#)

User guide for the Altec Lansing ACS65i amplified speaker system. This document provides detailed instructions on setup, operation, safety precautions, specifications, and warranty information for multimedia computer audio applications.