

Dr Trust NECWZ_IGH00014

Dr Trust USA Compressor Nebulizer Machine (Model: NECWZ_IGH00014) Instruction Manual

Comprehensive Guide for Safe and Effective Use

1. INTRODUCTION

The Dr Trust USA Compressor Nebulizer Machine, Model NECWZ_IGH00014, is designed to convert liquid medication into a fine aerosol mist for inhalation. This process facilitates the delivery of prescribed respiratory medications directly into the lungs, ensuring maximum absorption and effectiveness. This device is suitable for both adults and children and is intended to assist in the management of various respiratory conditions. It features RespiRight technology for efficient medication delivery and a flow adjuster for personalized treatment. The low-noise operation ensures a comfortable experience during use.

2. SAFETY INFORMATION

Please read all instructions carefully before using the nebulizer. Failure to follow these instructions may result in injury or damage to the device.

- Use only medications prescribed by a healthcare professional.
- Do not immerse the main compressor unit in water or any other liquid.
- Ensure the device is placed on a stable, flat surface during operation.
- Keep the device out of reach of children when not in use and supervise children during treatment.
- Do not block the air vents on the compressor unit during operation.
- Unplug the device from the power outlet immediately after use and before cleaning.
- Regularly inspect the power cord for any damage. Do not use if the cord is damaged.
- Store the device in a cool, dry place away from direct sunlight.

3. PACKAGE CONTENTS

Verify that all components are present and undamaged upon opening the package:

- Compressor Nebulizer Unit
- Adult Mask
- Child Mask

- Mouthpiece
- Medicine Cup (Nebulizer Kit)
- Air Tube
- Flow Adjuster
- Five Air Filters
- Instruction Manual

Problem	Possible Causes	Solutions
1. No Mist Production	<ul style="list-style-type: none"> • Dust/clogged filter • Improperly placed medicine cup • Faulty compressor • Incorrect medication consistency 	<ul style="list-style-type: none"> ☑Check medication viscosity – not too thick/thin ☑Ensure correct cup placement ☑Clean/replace filter ☑Verify compressor
2. Inconsistent Mist	<ul style="list-style-type: none"> • Overfilled/underfilled medicine cup • Device/medicine cup placement is not correct • Poor breathing technique 	<ul style="list-style-type: none"> ☑Check medication viscosity – not too thick/thin ☑Ensure correct cup placement ☑Clean/replace filter ☑Verify compressor
3. Leaking Mouthpiece	<ul style="list-style-type: none"> • Loose/tight connections • Misaligned parts • Worn-out accessories 	<ul style="list-style-type: none"> ☑Replace old/damaged accessories ☑Reassemble correctly ☑Adjust tightness of connections



Figure 3.1: Included Components. This image displays the main nebulizer unit, an adult mask, a child mask, a mouthpiece, a flow adjuster, an air tube, and five air filters, illustrating the complete kit.

4. PRODUCT COMPONENTS AND DIAGRAM

Familiarize yourself with the parts of your Dr Trust Compressor Nebulizer Machine:



Figure 4.1: Main Nebulizer Unit and Connected Accessories. This image shows the white compressor unit with the nebulizer kit (medicine cup, cap, and mouthpiece/mask connector) attached via the air tube. A green arrow indicates the rotational adjustment of the flow adjuster.

- **Compressor Unit:** The main device that generates compressed air.
- **Medicine Cup (Nebulizer Kit):** Holds the liquid medication.
- **Cap:** Covers the medicine cup.
- **Mouthpiece/Mask Connector:** Attaches to the medicine cup and connects to either the mouthpiece or a mask.
- **Air Tube:** Connects the compressor unit to the medicine cup.
- **Masks (Adult & Child):** Used for inhalation, covering the nose and mouth.
- **Mouthpiece:** Used for direct oral inhalation.
- **Air Filter Cap:** Protects the air filter.
- **Air Filter:** Filters incoming air for clean nebulization.
- **Power Switch:** Turns the device ON/OFF.
- **Flow Adjuster:** Allows adjustment of nebulization rate.

5. SETUP INSTRUCTIONS

Follow these steps to prepare your nebulizer for use:

1. Place the compressor unit on a clean, stable, and flat surface. Ensure it is within reach of a power outlet.
2. Open the medicine cup by twisting the top counter-clockwise.
3. Pour the prescribed amount of medication into the medicine cup. Do not overfill.
4. Securely close the medicine cup by twisting the top clockwise.
5. Attach one end of the air tube to the air outlet connector on the compressor unit.
6. Attach the other end of the air tube to the bottom of the medicine cup.
7. Connect either the mouthpiece or the appropriate mask (adult or child) to the top of the medicine cup.
8. Plug the power cord into a suitable electrical outlet.

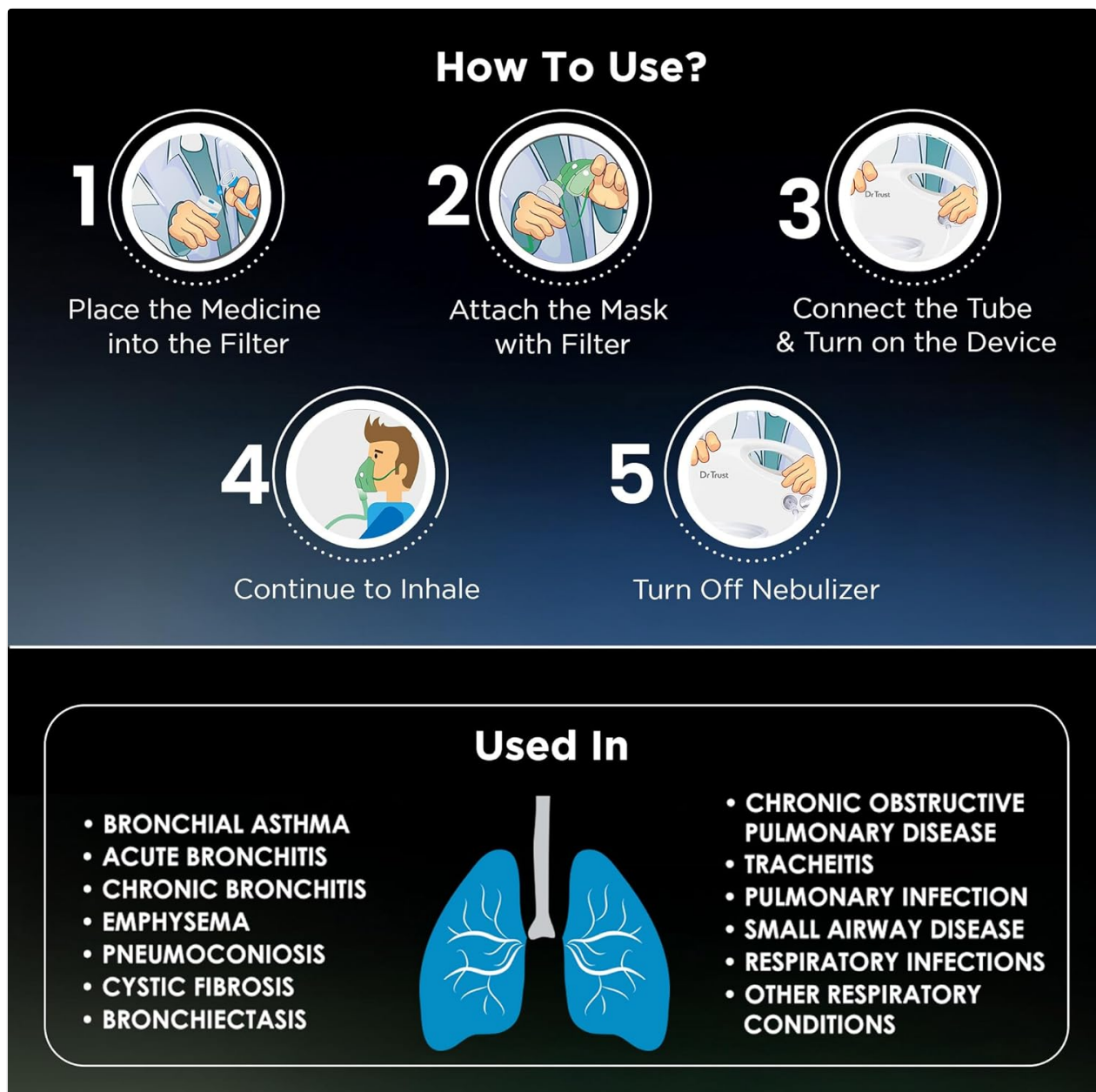


Figure 5.1: Nebulizer Setup and Usage Steps. This visual guide illustrates the five key steps: 1) Placing medicine into the filter/cup, 2) Attaching the mask with the filter/cup, 3) Connecting the tube and turning on the device, 4) Continuing to inhale, and 5) Turning off the nebulizer.

6. OPERATING INSTRUCTIONS

Once the device is set up, follow these steps for nebulization:

1. Press the power switch to turn on the compressor unit. The device will begin to produce a fine mist from the mouthpiece or mask.
2. Position the mouthpiece in your mouth, sealing your lips around it, or place the mask firmly over your nose and mouth.
3. Breathe normally and deeply through the mouthpiece or mask until all the medication has been nebulized. This typically takes 5-15 minutes, depending on the medication volume and flow rate.
4. The device features a flow adjuster on the medicine cup. Rotate this adjuster to control the nebulization rate and mist density according to your comfort or physician's recommendation.
5. When the medication cup is empty and no more mist is being produced, turn off the compressor unit by pressing the power switch.
6. Unplug the device from the power outlet.

Cut Wastage, Boost Savings

Breathe Smart with Dr Trust Patented **Respiright Technology**

Traditional Nebulizer

- Regular flow wastes medicine during exhalation.
- No savings.



Dr Trust Nebulizers

- Syncs medicine delivery with your breathing.
- Wastes Up to 66% less.
- Annual savings of Rs. 7,300.

 **Save Rs 36,500 Over 5 Years with Dr Trust**

Medicine Chamber with Flow Adjuster

180° Valve for easy Airflow Control & Personalized Treatment

Flow Adjuster



Open
Large Mist



Half Close
Medium Mist



Close
Small Mist



*Only with Dr Trust Patented Respiright Technology Savings calculated on assumptions of Rs 100 per daily nebulised dose annually.

Figure 6.1: Medicine Chamber with Flow Adjuster. This image illustrates the 180° valve for airflow control, showing three settings: 'Open' for large mist, 'Half Close' for medium mist, and 'Close' for small mist, allowing personalized treatment.

7. MAINTENANCE AND CLEANING

Proper cleaning and maintenance are essential for the longevity and hygienic operation of your nebulizer. Clean the device after each use.

1. **Turn Off & Unplug:** Switch off the nebulizer and unplug it from the electrical socket.
2. **Disassemble Parts:** Detach the mask/mouthpiece, medicine cup, and air tubing.
3. **Rinse with Warm or Filtered Water:** Rinse the medicine cup, mask/mouthpiece, and top cover under running warm or filtered water. Shake off excess water. *Note: Do not wash the air tubing. Wipe externally if needed.*
4. **Air Dry:** Place the cleaned parts on a clean towel and allow them to air dry completely. Avoid using a towel to dry to prevent contamination.
5. **Clean Main Unit:** Wipe the outer surface of the compressor unit with a damp cloth. *Do not immerse the main unit in water.*

Air Filter Replacement: The air filter should be replaced every 30 days or sooner if it appears discolored. To replace, remove the air filter cap, pull out the old filter, insert a new one, and replace the cap.



Figure 7.1: Nebulizer Cleaning Steps. This image provides a five-step visual guide for cleaning the nebulizer after each use,

8. TROUBLESHOOTING

If you encounter any issues with your nebulizer, refer to the following troubleshooting guide:

Problem	Possible Causes	Solutions
1. No Mist Production	<ul style="list-style-type: none">Dust/clogged filterImproperly placed medicine cupFaulty compressorIncorrect medication consistency	<ul style="list-style-type: none">Check medication viscosity (not too thick/thin)Ensure correct cup placementClean/replace filterVerify compressor functionality
2. Inconsistent Mist	<ul style="list-style-type: none">Overfilled/underfilled medicine cupDevice/medicine cup placement is not correctPoor breathing technique	<ul style="list-style-type: none">Check medication viscosity (not too thick/thin)Ensure correct cup placementClean/replace filterVerify compressor functionality
3. Leaking Mouthpiece	<ul style="list-style-type: none">Loose/tight connectionsMisaligned partsWorn-out accessories	<ul style="list-style-type: none">Replace old/damaged accessoriesReassemble correctlyAdjust tightness of connections

Problem	Possible Causes	Solutions
1. No Mist Production	<ul style="list-style-type: none"> • Dust/clogged filter • Improperly placed medicine cup • Faulty compressor • Incorrect medication consistency 	<ul style="list-style-type: none"> ☑Check medication viscosity – not too thick/thin ☑Ensure correct cup placement ☑Clean/replace filter ☑Verify compressor
2. Inconsistent Mist	<ul style="list-style-type: none"> • Overfilled/underfilled medicine cup • Device/medicine cup placement is not correct • Poor breathing technique 	<ul style="list-style-type: none"> ☑Check medication viscosity – not too thick/thin ☑Ensure correct cup placement ☑Clean/replace filter ☑Verify compressor
3. Leaking Mouthpiece	<ul style="list-style-type: none"> • Loose/tight connections • Misaligned parts • Worn-out accessories 	<ul style="list-style-type: none"> ☑Replace old/damaged accessories ☑Reassemble correctly ☑Adjust tightness of connections



Figure 8.1: Troubleshooting Guide. This image presents a table outlining common issues such as no mist production, inconsistent mist, and leaking mouthpiece, along with their possible causes and recommended solutions.

9. SPECIFICATIONS

Feature	Specification
Model Number	NECWZ_IGH00014
Product Dimensions	22 x 11 x 0.1 cm
Item Weight	1.4 kg
Nebulization Rate	More than 0.3 ml/min (Average)
Noise Level	Less than 55 dBA (1 meter away)
Country of Origin	India

Feature	Specification
Manufacturer	Nureca Limited

10. WARRANTY AND SUPPORT

The Dr Trust USA Compressor Nebulizer Machine comes with a warranty. Please note the following terms:

- Activate your warranty on the Dr Trust manufacturer website within 15 days of purchase.
- The warranty covers manufacturing defects in the nebulizer motor only.
- Exclusions: Breakage of nebulizer, water damage, general wear and tear, damage due to voltage surge, accessories, and power adapter are excluded from warranty coverage.
- For repair, customers must send the nebulizer to a Dr Trust service center. Attempting unauthorized repairs may cause electric shock and will void the warranty.

For customer support or warranty claims, please refer to the contact information provided on the official Dr Trust website or your purchase documentation.