

[manuals.plus](#) /

› [Sauder](#) /

› [Sauder Harvey Park Modern Stand Media Console Credenza User Manual](#)

Sauder 420834

User Manual: Sauder Harvey Park Modern Media Console

Model: 420834

INTRODUCTION

This manual provides comprehensive instructions for the assembly, operation, and maintenance of your Sauder Harvey Park Modern Stand Media Console Credenza. Designed to accommodate TVs up to 70 inches, this credenza offers both stylish display and practical storage solutions for your entertainment needs. Please read this manual thoroughly before beginning assembly or use to ensure proper setup and longevity of your product.



Image: Front view of the Sauder Harvey Park Modern Media Console Credenza in Grand Walnut finish, showcasing its three open shelves and three lower drawers.

SAFETY INFORMATION

Always prioritize safety during assembly and use. Failure to follow these guidelines may result in injury or damage to the product.

- Keep all hardware and small parts out of reach of children and pets.
- Assemble the unit on a soft, clean surface (e.g., a rug or blanket) to prevent scratching the furniture or your floor.
- Ensure all connections are secure before placing items on or inside the credenza.
- Do not exceed the maximum weight limit of 95 pounds for the top surface.
- Use caution when moving the assembled unit due to its weight (approximately 147 pounds).
- Consider using furniture straps or anchors to secure the unit to a wall, especially in homes with children, to prevent tipping.

PACKAGE CONTENTS

Before beginning assembly, verify that all components are present and undamaged. The package typically includes:

- All necessary engineered wood panels and pieces.
- Hardware kit (screws, dowels, cam locks, drawer slides, handles, etc.).
- Assembly instructions manual.

The credenza is shipped in two separate boxes due to its size and weight. Please ensure you have received both boxes before starting assembly. If any parts are missing or damaged, refer to the "Support" section for assistance.

SETUP AND ASSEMBLY

Assembly is required for this product. It is recommended to have at least two people for certain steps due to the size and weight of the components.

Tools Required:

- Hammer
- #2 Phillips Head Screwdriver

Assembly Steps:

1. **Preparation:** Clear a large, open area for assembly. Lay down a rug or blanket to protect both the furniture pieces and your flooring from scratches. Unpack all components and organize them by their labels.
2. **Follow Instructions:** Refer to the detailed, step-by-step assembly instructions included in your package. Sauder instructions are known for their clarity and well-labeled parts.
3. **Component Identification:** All parts and fasteners are clearly labeled. Pay close attention to these labels to avoid confusion.
4. **T-Lock Assembly System:** This credenza utilizes a T-lock assembly system for secure connections. Ensure all T-locks are properly engaged as per the instructions.
5. **Drawer Assembly:** Assemble the three smooth-gliding drawers carefully. Ensure drawer slides are installed correctly for proper function.
6. **Back Panel Installation:** The back panel typically requires hammering approximately 40 nails. This step often requires the unit to be on its side or upside down.
7. **Final Placement:** Assemble the unit as close to its final desired location as possible, as it will be heavy and difficult to move once fully assembled.

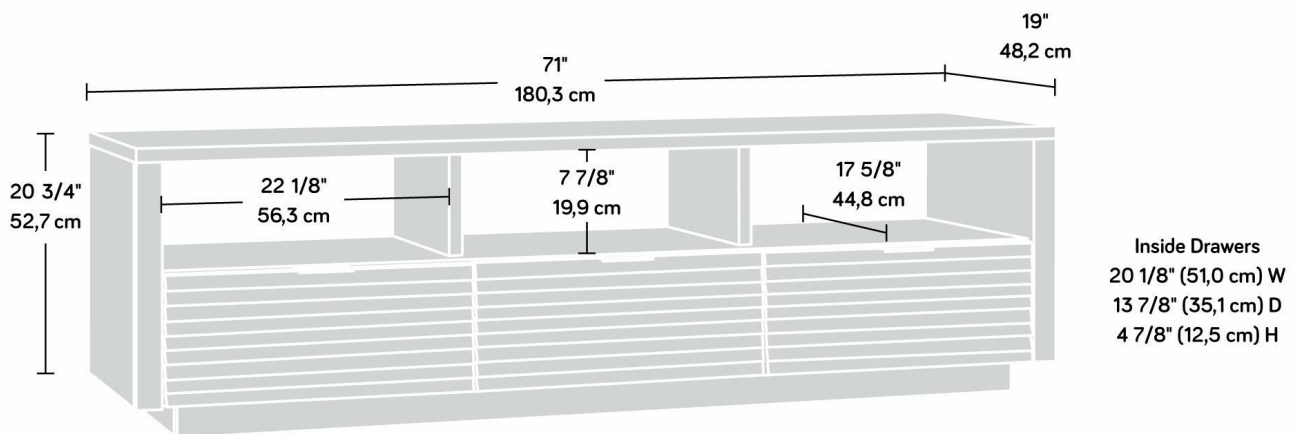


Image: Dimensional diagram of the media console, indicating overall length, height, depth, and internal shelf and drawer dimensions.



Image: A drawer of the media console pulled open, revealing ample storage space for media accessories like headphones and DVDs.

OPERATING AND USAGE

The Sauder Harvey Park Media Console is designed to be a central hub for your home entertainment system.

- **TV Placement:** The top surface is designed to accommodate televisions up to 70 inches and weighing up to 95 pounds. Ensure the TV is centered and stable.
- **Open Shelves:** Utilize the three open shelves for electronic devices such as Blu-ray players, gaming consoles, sound systems, or decorative items.
- **Storage Drawers:** The three lower drawers provide concealed storage for remotes, DVDs, CDs, cables, and other media accessories, helping to keep your living space organized and clutter-free.



Image: The media console with a large television placed on its top surface, and various media devices and decorative items arranged on the open shelves.

MAINTENANCE

To maintain the appearance and longevity of your Sauder Harvey Park Media Console:

- **Cleaning:** Wipe surfaces with a damp cloth. Avoid harsh chemicals or abrasive cleaners, which can damage the Grand Walnut finish.
- **Spills:** Clean up spills immediately to prevent staining or damage to the engineered wood.
- **Sunlight:** Avoid prolonged exposure to direct sunlight, which can cause fading or discoloration over time.
- **Heat and Moisture:** Keep the unit away from direct heat sources and excessive moisture.

TROUBLESHOOTING

If you encounter issues during assembly or use, consider the following:

- **Missing/Damaged Parts:** If you find any missing or damaged components upon unboxing, do not proceed with assembly. Contact Sauder customer support immediately for replacement parts.
- **Assembly Difficulties:** Double-check the instruction manual for the specific step you are on. Ensure all parts are oriented correctly and all hardware is used as indicated. Sometimes, a small misalignment can prevent larger pieces from fitting together.
- **Drawers Not Gliding Smoothly:** Verify that the drawer slides are installed correctly and are not obstructed. Ensure all screws are tightened, but not overtightened.
- **Unit Wobbles:** Ensure the unit is placed on a level surface. Check all cam locks and screws to confirm they are fully tightened.

For further assistance, please contact Sauder customer support.

SPECIFICATIONS

Feature	Detail
Brand	Sauder
Model Name	Harvey Park
Model Number	420834
Color	Grand Walnut
Product Dimensions	19"D x 78.75"W x 20.75"H
Item Weight	147 Pounds
Weight Limit (Top)	95 Pounds
Material	Engineered Wood
Finish Type	Grand Walnut Finish
Assembly Required	Yes
Number of Shelves	1 (referring to the main open shelf area, though it's divided into 3 sections)
Number of Pieces	2 (referring to shipping boxes)
UPC	042666032988

WARRANTY INFORMATION

Your Sauder Harvey Park Media Console is backed by a **5-year limited warranty** on parts. This warranty covers defects in materials and workmanship under normal use. Please retain your proof of purchase for warranty claims. For full details regarding warranty coverage and claims, please visit the Sauder website or contact customer support.

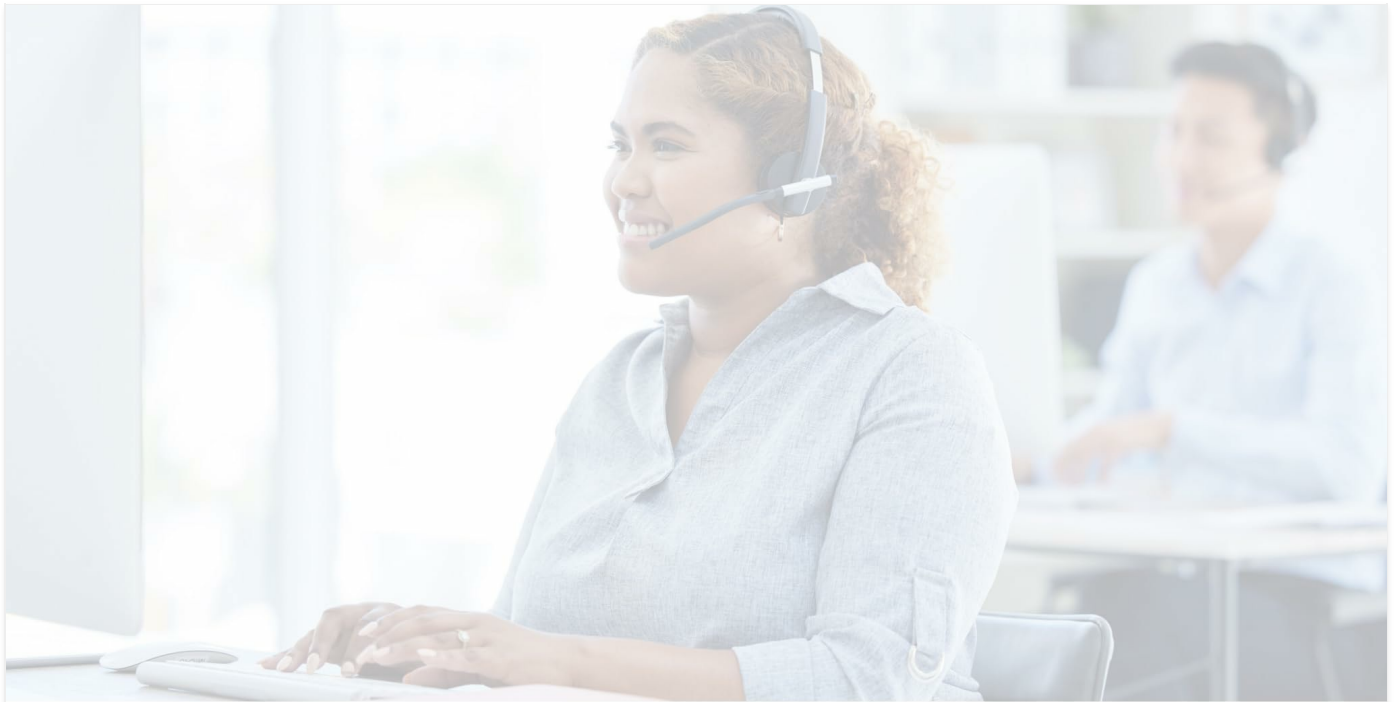
SUPPORT

Sauder is committed to providing excellent customer service. If you have any questions, require replacement parts, or need assistance with assembly, please contact us:

Website: [sauder.com/service](https://www.sauder.com/service)

Phone: 800-523-3987

Our domestic call center is ready to assist you. You can also find assembly tip videos and information on replacement parts through our website.



DOMESTIC CALL CENTER READY TO ASSIST.

sauder.com/service


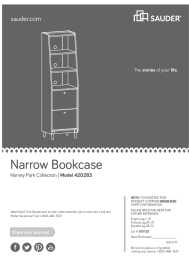

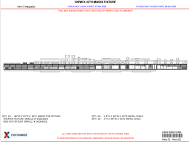


800-523-3987

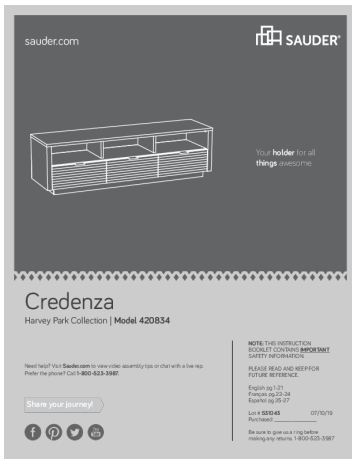
Image: A Sauder customer service representative wearing a headset, ready to provide assistance.



© 2024 Sauder Woodworking. All rights reserved.

Related Documents - 420834

 <p>Wall Desk Harvey Park Collection - Model 423704</p>	<p>Sauder Wall Desk - Harvey Park Collection - Model 423704 Assembly Instructions</p> <p>Comprehensive assembly instructions and safety guide for the Sauder Wall Desk (Model 423704) from the Harvey Park Collection. This manual includes a parts list, required tools, step-by-step assembly procedures in English, French, and Spanish, important safety warnings, and details on the 5-year limited warranty. Contact information for Sauder Woodworking Company is provided.</p>
 <p>Narrow Bookcase Harvey Park Collection - Model 420283</p>	<p>Sauder Narrow Bookcase Assembly Instructions - Model 420283</p> <p>Comprehensive assembly guide for the Sauder Narrow Bookcase, Harvey Park Collection, Model 420283. Includes detailed steps, part identification, hardware list, safety precautions, and warranty information.</p>
 <p>TV Stand Model 411660</p>	<p>Sauder TV Stand Model 411660 Assembly Instructions and Safety Guide</p> <p>A comprehensive guide for assembling the Sauder TV Stand, Model 411660. Includes detailed step-by-step instructions, parts and hardware identification, important safety warnings regarding TV stability and weight limits, and warranty information.</p>
 <p>98626 Madix Fixture RTA Furniture</p>	<p>98626 Madix Fixture RTA Furniture - Product Overview and Stock List</p> <p>Detailed product information for the 98626 Madix Fixture RTA Furniture, including launch dates, fixture and shelf quantities, and a comprehensive stock assortment listing with item descriptions, vendor details, and UPC barcodes.</p>
 <p>Credenza Boulevard Cafe Collection - Model 420649</p>	<p>Sauder Credenza Model 420649 Assembly Instructions</p> <p>Step-by-step assembly instructions for the Sauder Credenza, Boulevard Cafe Collection, Model 420649. Includes parts identification, hardware details, assembly steps, safety warnings, and warranty information.</p>
 <p>Computer Desk with Hutch Harbor View Collection - Model 415109</p>	<p>Sauder Computer Desk with Hutch - Assembly Instructions</p> <p>Assembly instructions for the Sauder Harbor View Collection Computer Desk with Hutch (Model 415109). This guide provides detailed steps, part identification, and hardware details for building the furniture.</p>



[\[pdf\]](#) User Manual Warranty Diagram

420834 indd S010176 User Manual Sauder Harvey Park Credenza for TVs up to 70 Grand Walnut finish Home Kitchen A17dpFLtITL m media amazon images I |||

sauder.com Your holder for all things awesome. Credenza Harvey Park Collection Model **420834** Need help Visit Sauder.com to view video assembly tips or chat with a live rep. Prefer the phone Call 1-800-523-3987. Share your journey NOTE: THIS INSTRUCTION BOOKLET CONTAINS IMPORTANT SAFETY INFORM...

lang:en score:43 filesize: 1.41 M page_count: 32 document date: 2022-07-27



[\[pdf\]](#) Warranty

Credenza Lowes HolidayYou may receive extra hardware with your unit 35GA CABINET RIGHT 3 35GB LEFT 35GC DRAWER 35GD 1F 68649651lowes productdocuments 758cbf66 80f2 4d56 afcc

892bc4ea96a8 68649651 |||

CONTACT US FIRST BsaEuFdOeRr.EcoMmAKING ANY RETURNS TO THE RSTEOTARIEL.ER. Visit sauder.com/service ... EST except holidays Your holder for all things awesome. Credenza Harvey Park Collection Model **420834** Scan to rate and review your piece at Sauder.com Your opinion matters NOTE: THIS INSTRUCTIO...

lang:en score:22 filesize: 3.97 M page_count: 32 document date: 2023-10-05