

## Pfister 9743210

# Pfister 9743210 Pressure-Balanced Cartridge Instruction Manual

Model: 9743210 | Brand: Pfister

## 1. PRODUCT OVERVIEW

The Pfister 974-3210 is a Pressure Balance Cartridge featuring Pforever Seal ceramic disc valve technology with a never-leak guarantee. This cartridge is designed for use with 0X8, VB8, JV8, and JX8 valve assemblies.

### Key Features

- OEM (original equipment manufacturer) pressure balance cartridge 974-321.
- Compatible with 0X8, VB8, JV8, and JX8 valve assemblies.
- Features ceramic disc technology for durability.
- Includes an adapter for legacy deep cast valve bodies. The adapter is not required for valve bodies manufactured after 2015.
- Perma Balance technology provides reliable temperature control and helps prevent hot or cold surges.
- High temperature limit stopper allows setting a maximum heat limit to help prevent scalding; this must be set during installation.
- Can replace older two-piece models.
- ASME certified.

## 2. PRODUCT COMPONENTS AND COMPATIBILITY

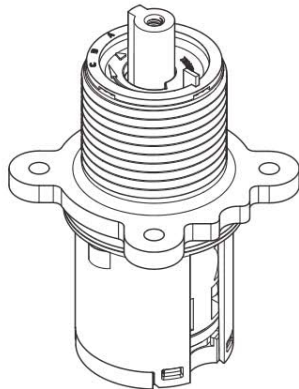
Familiarize yourself with the cartridge and its compatibility with various valve types.



Image: Pfister 9743210 Pressure-Balanced Cartridge with adapter for legacy deep cast valves. Note the white adapter at the bottom for older valve bodies.

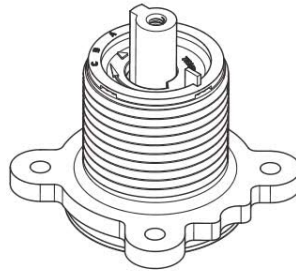
This 9743210 model can replace the following cartridges:

**Single Piece**

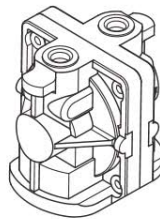


974-042

**Two Piece\***

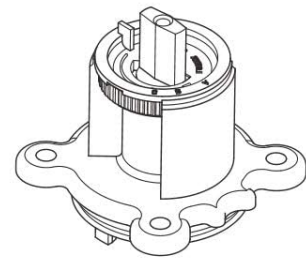


971-250

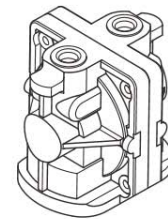


974-291 (S74-291)

**Two Piece\***



971-150



974-491

**\*Must replace both pieces when installing new cartridge**

Image: Compatibility chart for Pfister 9743210 cartridge, illustrating it can replace single-piece 974-042 and two-piece 971-250, 974-291 (S74-291), 971-150, and 974-491 models. If replacing a two-piece model, both pieces must be replaced.

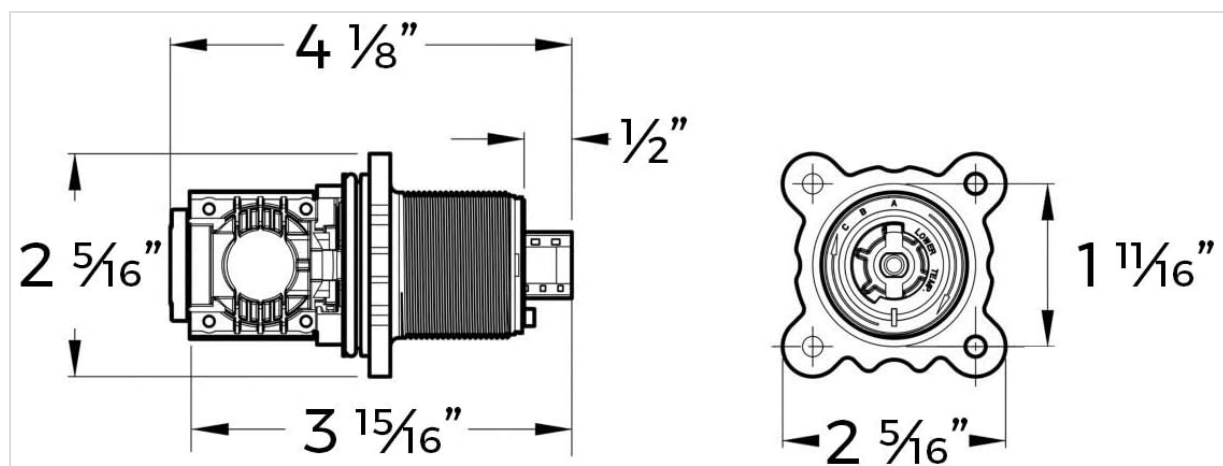


Image: Dimensional drawing of the Pfister 9743210 Pressure-Balanced Cartridge, showing key measurements for installation planning.

### 3. INSTALLATION INSTRUCTIONS

#### Before You Begin

- Ensure you have the necessary tools: screwdriver, adjustable wrench, silicone grease (optional, but recommended for O-rings).

- Shut off the main water supply to your home or to the specific bathroom/area where you are working.
- Cover the drain to prevent small parts from falling.

## Cartridge Replacement Steps

1. Remove the faucet handle and trim plate to expose the existing valve assembly.
2. Carefully remove the old cartridge. Note its orientation and any adapters.
3. Inspect the valve body for debris or damage. Clean if necessary.
4. **Adapter Use:** The 9743210 cartridge comes with a white adapter for legacy deep cast valve bodies. If your valve body was manufactured after 2015, this adapter may not be required. If your existing valve has round seals where the cartridge inserts, you may need to remove the white adapter from the new cartridge.
5. Apply a thin layer of silicone grease to the O-rings on the new cartridge to facilitate insertion and ensure a good seal.
6. Insert the new Pfister 9743210 cartridge into the valve body, ensuring it is properly seated and aligned with the hot and cold water inlets.
7. Secure the cartridge according to your specific valve assembly's requirements (e.g., retaining nut, clips).
8. **Set High Temperature Limit Stopper:** The high temperature limit stopper must be set during installation to prevent scalding. Consult your faucet's specific trim kit instructions for precise adjustment.
9. Reinstall the trim plate and faucet handle. Ensure the handle operates smoothly. If the handle does not fit fully onto the shaft, minor adjustments to the shaft keys (e.g., shaving a small amount of plastic) may be necessary for some older handle designs.
10. Turn the water supply back on slowly and check for leaks.

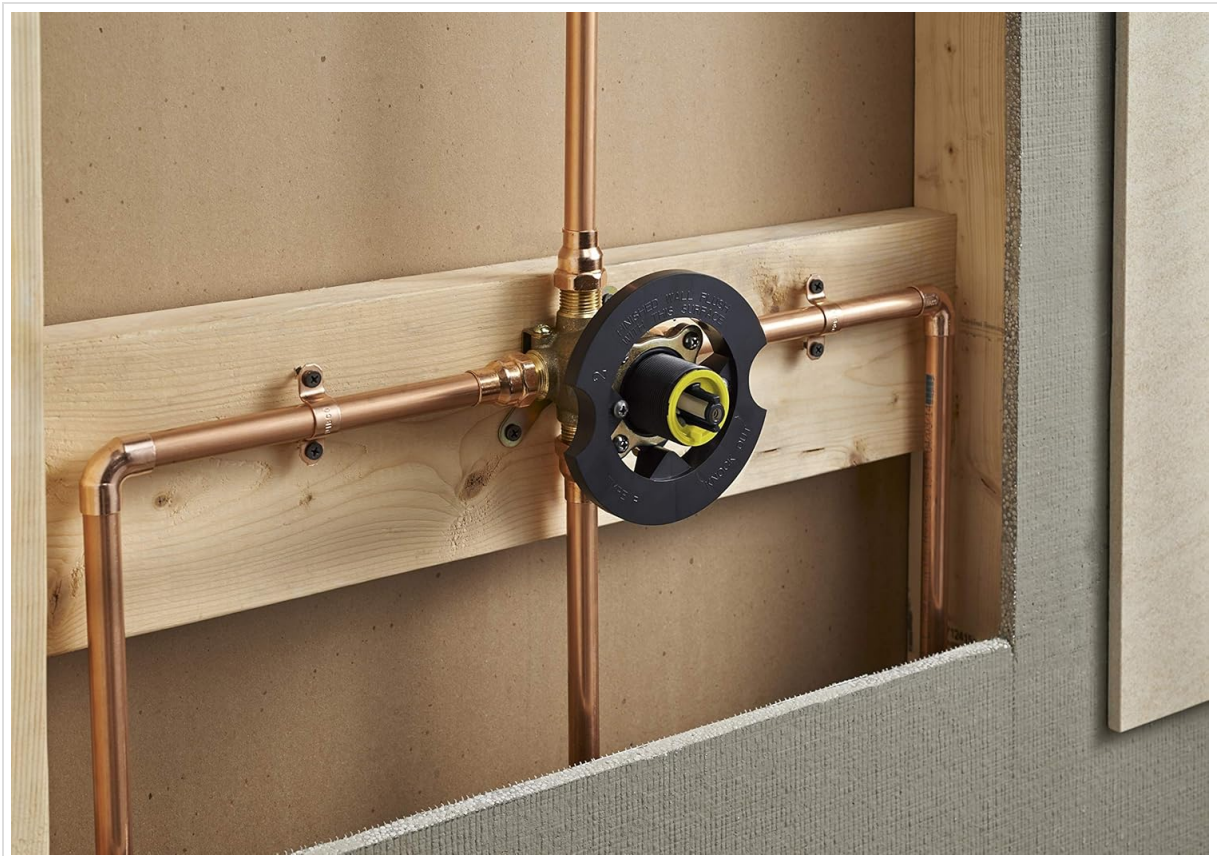


Image: Example of a Pfister valve assembly installed within a wall, illustrating the plumbing connections.

## 4. OPERATION

The Pfister 9743210 Pressure-Balanced Cartridge is designed to provide consistent water temperature and pressure. Once installed, operate your tub or shower faucet as usual. The Perma Balance technology within the cartridge automatically adjusts water flow to maintain your desired temperature, even if there are sudden pressure changes in your hot or cold water lines (e.g., someone flushes a toilet).

The faucet handle controls both water flow and temperature. Typically, rotating the handle adjusts temperature, while pulling it out or pushing it in controls flow. Refer to your specific faucet trim kit instructions for exact operation details.

## 5. MAINTENANCE

The Pfister 9743210 cartridge features durable ceramic disc technology, which is known for its long-lasting, leak-free performance and typically requires minimal maintenance.

- **Cleaning:** Periodically clean the exterior of your faucet and trim with a soft cloth and mild soap. Avoid abrasive cleaners or harsh chemicals, as these can damage the finish.
- **Checking for Leaks:** Regularly inspect around the faucet base and under the sink/behind the wall for any signs of water leaks. Address any leaks promptly to prevent water damage.
- **Handle Operation:** If the faucet handle becomes stiff or difficult to turn over time, it may indicate that the O-rings or internal components could benefit from re-lubrication with silicone grease. This typically requires disassembling the handle and trim to access the cartridge.

## 6. TROUBLESHOOTING

Here are some common issues and their potential solutions:

Problem	Possible Cause	Solution
Water dripping from spout or showerhead	Cartridge seals are worn or improperly seated.	Ensure cartridge is fully seated. Reapply silicone grease to O-rings. If dripping persists, the cartridge may need replacement.
Water not hot enough or too hot	High temperature limit stopper incorrectly set.	Adjust the high temperature limit stopper. Refer to your faucet trim kit instructions.
Handle is stiff or hard to turn	Lack of lubrication on O-rings.	Disassemble handle and trim, apply silicone grease to cartridge O-rings.
Handle does not fit properly on cartridge stem	Stem keys are slightly wider than original handle opening.	Carefully shave a small amount of plastic from the cartridge stem keys to match the handle's opening.
No water flow or reduced flow	Water supply off, debris in cartridge, or aerator clogged.	Check water supply. Remove and inspect cartridge for debris. Clean or replace aerator if applicable.

## 7. PRODUCT SPECIFICATIONS

Specification	Detail
Material	Ceramic



Specification	Detail
Brand	Pfister
Item Dimensions (L x W x H)	4.2 x 2.3 x 2.3 inches
Exterior Finish	Black-coated
Inlet Connection Size	0.13 Inches
Inlet Connection Type	Barb
Outlet Connection Type	Barb
Number of Ports	1
Outlet Connection Size	0.13 Inches
Specification Met	OEM
Item Weight	7.8 ounces
Item Model Number	9743210
Included Components	1 pressure balance cartridge

## 8. WARRANTY AND SUPPORT

### Warranty Information

This Pfister product is covered by a **Limited Lifetime Warranty**. For specific details regarding coverage, terms, and conditions, please refer to the official Pfister warranty documentation or contact Pfister customer service.

### Customer Support

For additional assistance, technical support, or to inquire about replacement parts, please visit the official Pfister website or contact their customer service department. You can find contact information and further resources on their website: [www.pfisterfaucets.com](http://www.pfisterfaucets.com)

## 9. GENERAL PRODUCT INFORMATION VIDEOS

The following videos provide general information about Pfister products and brand philosophy. They are not specific installation guides for the 9743210 cartridge but offer insights into Pfister's design and quality.

### Pfister Design Made Right

Your browser does not support the video tag.

Video: A general brand video from Pfister showcasing their design philosophy and product range. Duration: 0:46.

### Why Pfister Brand Video

Your browser does not support the video tag.

Video: Another brand video from Pfister highlighting their commitment to quality and innovation. Duration: 0:45.

