

Manuals+

[Q & A](#) | [Deep Search](#) | [Upload](#)

[manuals.plus](#) /

- › [Kingston Brass](#) /
- › [Kingston Brass FSC1975ACL American Classic Widespread Bathroom Faucet Instruction Manual](#)

Kingston Brass FSC1975ACL

Kingston Brass American Classic Widespread Bathroom Faucet

MODEL: FSC1975ACL

Introduction

This manual provides comprehensive instructions for the installation, operation, and maintenance of your Kingston Brass American Classic Widespread Bathroom Faucet, Model FSC1975ACL. Please read these instructions thoroughly before beginning installation to ensure proper function and longevity of your product. Retain this manual for future reference.



Image: The Kingston Brass American Classic Widespread Bathroom Faucet, Model FSC1975ACL, featuring an oil-rubbed bronze finish and a three-piece design with two handles and a central spout.

Safety Information

Observe all local plumbing and building codes. Professional installation is recommended. Always turn off the main water supply before installing or servicing the faucet. Wear safety glasses during installation. Avoid using harsh chemicals or abrasive cleaners on the faucet finish.

Package Contents

Verify that all components are present before beginning installation:

- Widespread Bathroom Faucet Assembly (Spout and two handles)
- Mounting Hardware
- Pop-Up Drain Assembly
- Hot and Cold Water Supply Lines (typically 1/2" IPS connection)

Tools Required (Not Included)

The following tools are typically required for installation:

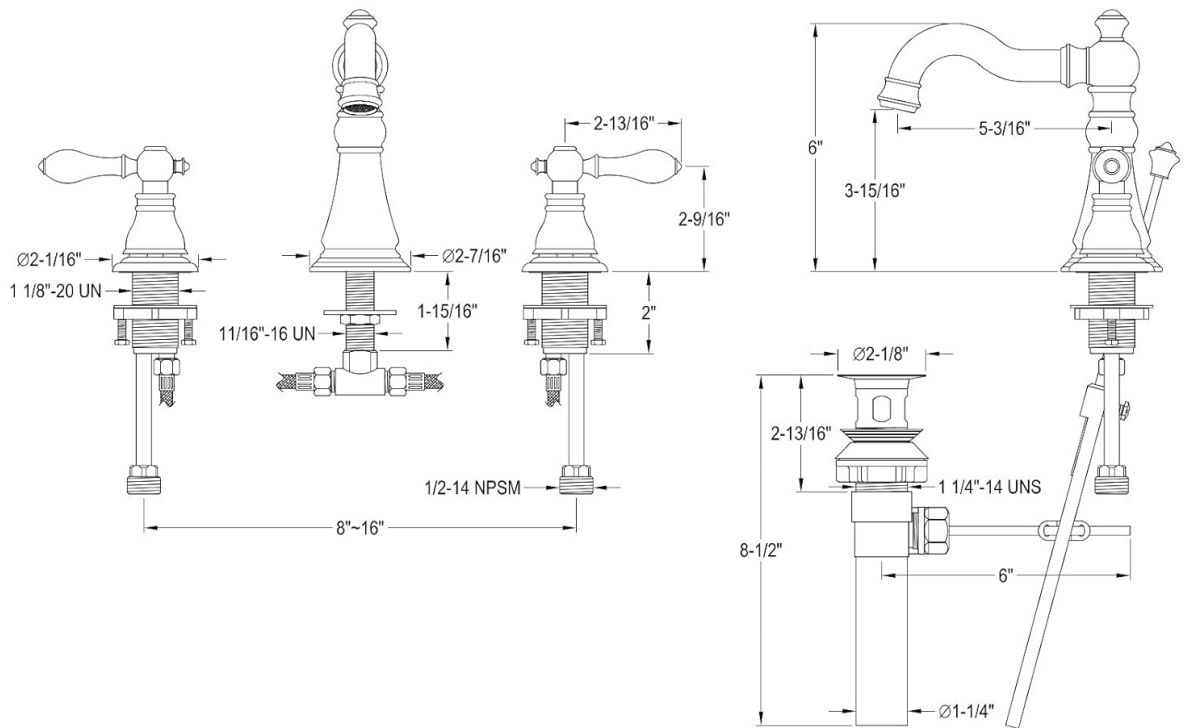
- Adjustable Wrench
- Phillips Head Screwdriver
- Flat Head Screwdriver
- Plumber's Putty or Silicone Sealant
- Thread Seal Tape (Teflon Tape)
- Basin Wrench (optional, for tight spaces)
- Safety Glasses
- Flashlight

Specifications

Brand	Kingston Brass
Model Name	American Classic
Model Number	FSC1975ACL
Material	Solid Brass Construction
Finish Type	Oil Rubbed Bronze
Mounting Type	Deck Mount, Widespread
Hole Count	3-Hole Installation
Number of Handles	2
Maximum Flow Rate	1.2 Gallons Per Minute (4.5 LPM) at 60 PSI
Spout Height	6 Inches
Spout Reach	5.19 Inches
Connection Type	Standard 1/2" IPS Connection
Cartridge Type	Drip-free Ceramic Disc Cartridge

FSC1971,2,5,8ACL

Widespread Lavatory Faucet with Retail Pop-Up



Ref# FSC1971,2,5,8ACL | 2021-07-A

Image: Overview of faucet features, highlighting 3-hole installation, 1.2 GPM flow rate, and a rotating swivel spout.

Setup and Installation

Follow these steps for proper installation of your widespread bathroom faucet:

Step 1: Prepare the Sink and Water Supply

1. Turn off the main water supply to the bathroom.
2. Clear the area under the sink for access.
3. If replacing an old faucet, remove it and clean the sink surface thoroughly.

Step 2: Install the Faucet Handles

1. Insert the hot and cold valve bodies through the outer holes of the sink deck.
2. From underneath the sink, secure each valve body with its respective washer and mounting nut. Hand-tighten, then use a basin wrench or adjustable wrench to tighten securely. Ensure the handles are properly oriented.



Image: A detailed view of one of the faucet handles, showcasing its design and oil-rubbed bronze finish.

Step 3: Install the Faucet Spout

1. Apply a thin bead of plumber's putty or silicone sealant around the base of the faucet spout.
2. Insert the spout body through the center hole of the sink deck.
3. From underneath, secure the spout with its washer and mounting nut. Tighten securely.

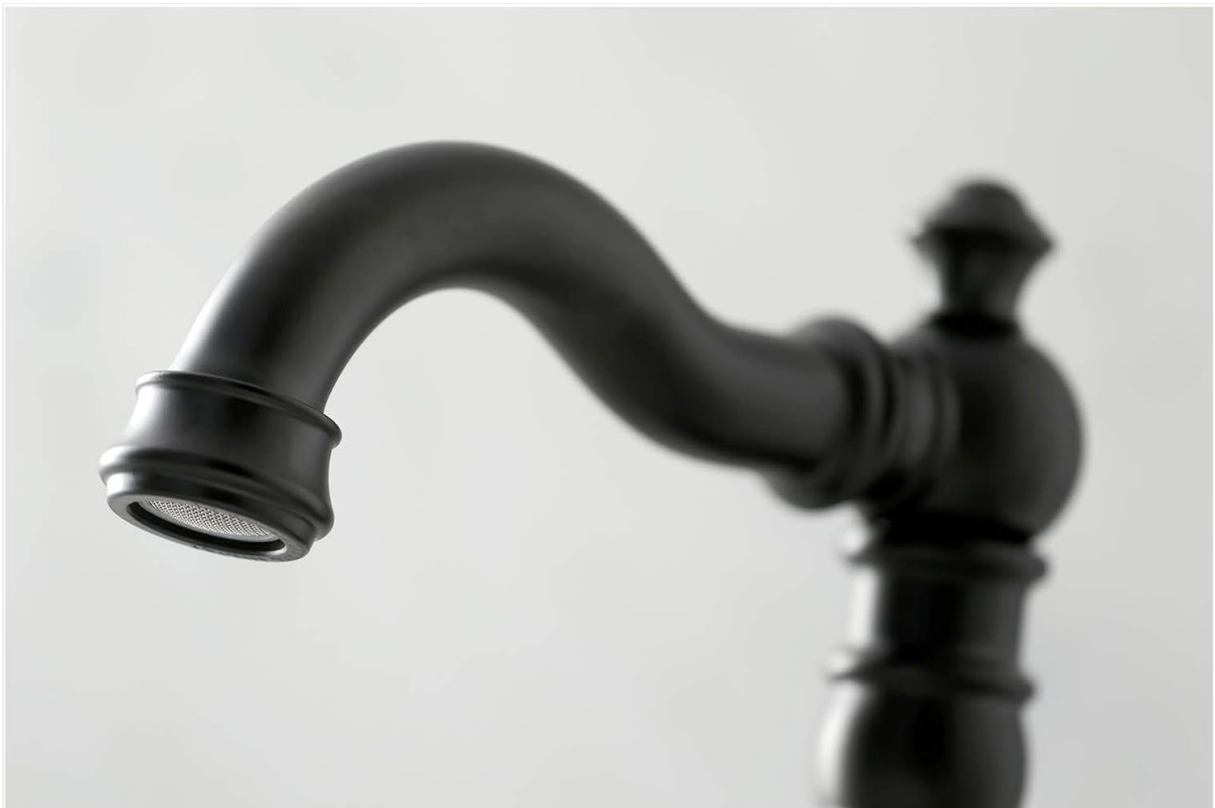


Image: A close-up of the faucet spout, highlighting the aerator and the smooth curve of the design.

Step 4: Connect Water Supply Lines and Cross-Connectors

1. Connect the hot and cold water supply lines to the corresponding valve bodies. Use thread seal tape on the threads and tighten with an adjustable wrench.
2. Connect the flexible cross-connectors between the valve bodies and the spout assembly. Ensure all connections are tight to prevent leaks.
3. Connect the main water supply lines from the wall to the bottom of the faucet valve bodies.



Image: Diagram illustrating the solid brass construction, key spout measurements (reach, clearance, height), and available cartridge options (ceramic for drip-free performance).

Step 5: Install the Pop-Up Drain Assembly

1. Disassemble the pop-up drain. Apply plumber's putty or silicone sealant under the flange of the drain body and insert it into the sink drain hole.
2. From underneath, secure the drain body with the rubber washer, friction washer, and mounting nut. Tighten securely.
3. Connect the pivot rod to the pop-up stopper and the lift rod. Adjust the height of the stopper as needed.



Image: Detailed diagram of the drain assembly with overflow, showing the plunger, clevis screw, spring clip, and clevis strap for proper installation and function.

Step 6: Test for Leaks

1. Slowly turn on the main water supply.
2. Check all connections for leaks. If leaks occur, tighten the connections further.
3. Remove the aerator from the spout and turn on both hot and cold water to flush out any debris. Replace the aerator.



Image: Technical diagram providing detailed dimensions and assembly views for the widespread lavatory faucet, essential for accurate installation.

Operating Instructions

Your Kingston Brass American Classic Widespread Bathroom Faucet is designed for ease of use.

- **Water Flow:** Turn the handles clockwise to decrease water flow and counter-clockwise to increase water flow.
- **Temperature Control:** The left handle controls hot water, and the right handle controls cold water. Adjust both handles to achieve the desired water temperature.
- **Spout Swivel:** The faucet spout is designed to swivel 360 degrees, allowing for flexible positioning and ease of use within the sink basin.
- **Pop-Up Drain:** Use the lift rod located behind the spout to open and close the drain stopper.



Image: Diagram highlighting the 360-degree swivel capability of the faucet spout, providing enhanced flexibility.

Maintenance and Care

Proper care will ensure the lasting beauty and performance of your faucet.

- **Cleaning:** Clean the faucet regularly with a soft cloth and warm, soapy water. Rinse thoroughly and dry with a soft cloth to prevent water spots.
- **Avoid Harsh Cleaners:** Do not use abrasive cleaners, harsh chemicals, ammonia-based products, or polishes containing alcohol. These can damage the oil-rubbed bronze finish.
- **Aerator Maintenance:** If water flow decreases, the aerator may be clogged. Unscrew the aerator from the spout, clean any debris, and rinse before reattaching.
- **Ceramic Disc Cartridge:** The faucet features a drip-free ceramic disc cartridge, which typically requires no maintenance. If a leak occurs from the handles, contact customer support.

Troubleshooting

Problem	Possible Cause	Solution
Low Water Flow	Clogged aerator; partially closed shut-off valves; debris in supply lines.	Clean aerator; ensure shut-off valves are fully open; flush supply lines.
Leaks from Spout	Loose connections; damaged O-rings or cartridge.	Check and tighten all connections; if problem persists, contact customer support for replacement parts.
Leaks from Handles	Loose packing nut; worn cartridge.	Tighten packing nut (if applicable); replace ceramic disc cartridge if necessary (contact customer support).
Water Temperature Issues	Incorrect hot/cold supply line connection; water heater issues.	Verify hot and cold lines are connected correctly; check water heater settings.

Warranty and Support




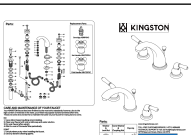
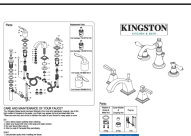
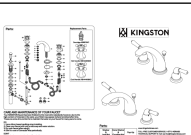
Kingston Brass products are manufactured under strict quality standards. For specific warranty details, please refer to the warranty card included with your purchase or visit the official Kingston Brass website. For technical assistance, replacement parts, or any other inquiries, please contact Kingston Brass customer support directly.

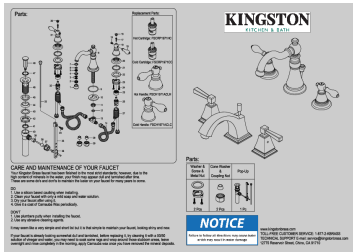
Manufacturer: Kingston Brass

Website: www.kingstonbrass.com

© 2025 Kingston Brass. All rights reserved.

Related Documents - FSC1975ACL

	<p>Kingston FSC1975ACL Series Lever Handle Parts Diagram</p> <p>Official parts diagram for Kingston FSC1975ACL series lever handles, including models FSC1975ACL, 1,3,5,8,9CML,CMLAB and FSC1975ACL. Features part identification and ordering information from Kingston Brass.</p>
	<p>Kingston Brass KB985KL Widespread Lavatory Faucet Installation and Maintenance Guide</p> <p>Detailed installation and maintenance instructions for the Kingston Brass KB985KL widespread lavatory faucet, featuring parts lists, step-by-step assembly, and care tips for optimal performance and longevity.</p>
	<p>Kingston Brass Magellan KB982ALL Widespread Lavatory Faucet Installation and Maintenance Guide</p> <p>Detailed installation and maintenance guide for the Kingston Brass Magellan KB982ALL widespread lavatory faucet. Includes parts lists, care instructions, and step-by-step assembly guidance.</p>
	<p>Kingston Brass Widespread Lavatory Faucet Installation and Maintenance Guide</p> <p>Comprehensive guide for installing and maintaining your Kingston Brass Widespread Lavatory Faucet, including parts lists, step-by-step instructions, and care tips.</p>
	<p>Kingston Brass Widespread Lavatory Faucet Installation and Maintenance Guide</p> <p>Comprehensive installation and care guide for Kingston Brass widespread lavatory faucets, featuring step-by-step instructions, parts lists, and maintenance tips.</p>
	<p>Kingston Brass KB4988BX Widespread Lavatory Faucet Installation and Care Guide</p> <p>Comprehensive guide for installing and maintaining the Kingston Brass KB4988BX widespread lavatory faucet. Includes parts lists, step-by-step installation instructions, and care tips for preserving the faucet's finish.</p>

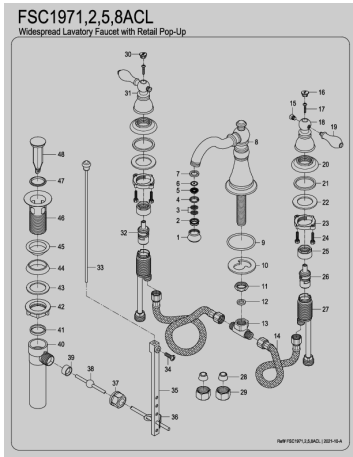


[\[pdf\]](#) Installation Guide

kingston brass FSC1975ACL install media kingstonbrass technical |||

...

lang: **score:19** filesize: 1.25 M page_count: 3 document date: 2023-09-12



[\[pdf\]](#) Diagram

kingston brass FSC1975ACL parts diagram media kingstonbrass technical |||

...

lang: **score:19** filesize: 217.43 K page_count: 1 document date: 2021-10-21