

Simrad GO9 XSE

Simrad GO9 XSE Multifunction Display and Sonar User Manual

Model: GO9 XSE | Brand: Simrad

1. INTRODUCTION

This manual provides detailed instructions for the installation, operation, and maintenance of your Simrad GO9 XSE Multifunction Display and Sonar. The GO XSE Series is designed for ease of use with intuitive touchscreen controls, offering advanced navigation and fish-finding capabilities for power boaters.

Key features include:

- Multi-touch Widescreen display
- TripIntel™ technology for trip planning
- Autopilot control integration
- Flexible flush or bracket mounting options
- High-speed 10 Hz GPS
- Built-in Broadband Sounder™ and CHIRP sonar support
- StructureScan® HD imaging or ForwardScan™ sonar support (transducer required)
- Integrated Radar Display capability (requires radar antenna)



Figure 1: Simrad GO9 XSE displaying combined chart and sonar data.

2. WHAT'S IN THE BOX

The standard package for the Simrad GO9 XSE (No Xdcr) typically includes:

- Simrad GO9 XSE Multifunction Display Unit
- Mounting Bracket and Knobs
- Flush Mount Kit
- Power Cable
- Documentation Package (including this manual)

Note: This specific model (No Xdcr) does not include a transducer. Transducers such as the TotalScan Transducer or HDI Skimmer transducer, which enable advanced sonar features, are sold separately. Please refer to your specific product packaging for exact contents.

3. SETUP AND INSTALLATION

Proper installation is crucial for optimal performance. It is recommended that installation be performed by a qualified marine electronics technician.

3.1 Mounting the Display

The GO9 XSE offers two primary mounting options: flush mount or bracket mount.

- **Bracket Mount:** Attach the included bracket to a suitable flat surface using the provided hardware. Secure the display unit to the bracket using the knobs. Ensure the bracket is stable and can withstand marine conditions.
- **Flush Mount:** Cut an opening in your dashboard or console according to the dimensions provided in the flush mount template (included in the packaging). Secure the display from behind using the flush mount kit.



Figure 2: Simrad GO9 XSE in bracket mount configuration, displaying the home screen.

3.2 Power Connection

Connect the power cable to a 12V DC power source on your vessel. Ensure proper fusing and wiring according to marine electrical standards. The red wire connects to positive (+), and the black wire connects to negative (-).

3.3 Transducer Connection (If applicable)

If you have purchased a compatible transducer (e.g., TotalScan or HDI Skimmer), connect its cable to the appropriate sonar port on the back of the GO9 XSE unit. Ensure the connection is secure and watertight. For transom-mount transducers, follow the transducer's specific installation instructions for optimal

placement and angle.

Your browser does not support the video tag.

Video 1: Product Overview Video. This video provides a general overview of a Simrad transducer, demonstrating its features and components, including the 9-pin connector and transom mount design. It highlights the integration of Broadband Sounder and DownScan Imaging technologies for enhanced underwater visibility.

3.4 Initial Power-Up

Once all connections are made, power on the unit. The device will typically boot to the home screen. Follow any on-screen prompts for initial setup, such as language selection and time zone.

4. OPERATING INSTRUCTIONS

The Simrad GO9 XSE features an intuitive multi-touch widescreen display. Navigation and control are similar to a smartphone or tablet.

4.1 Home Screen and Menus

The home screen provides access to all functions via large, clearly-captioned icons. Tap an icon to open an application (e.g., Chart, Sonar, Radar, Autopilot). Swipe left or right to access additional pages if configured.



Figure 3: The Simrad GO9 XSE home screen, showing various application icons for navigation and sonar functions.

4.2 Chartplotter Functions

- **Zoom:** Pinch in or out on the screen.
- **Pan:** Tap and drag to move the chart view.
- **Waypoints:** Tap on the chart to create a waypoint, or select the 'Waypoints' icon from the home screen.
- **Routes:** Plan and manage routes using the 'Routes' icon.
- **Chart Options:** Access settings for Insight Map Chart and Navionics+ Chart details, including depth

contours and navigation aids.

4.3 Sonar Functions

The GO9 XSE supports various sonar technologies (requires compatible transducer):

- **Broadband Sounder™ & CHIRP Sonar:** Provides traditional sonar views for fish detection and depth.
- **DownScan Imaging™:** Offers high-resolution, picture-like views of structure and fish directly beneath your boat.
- **StructureScan® HD:** Provides wide, high-resolution views of structure and fish to the sides of your boat.
- **ForwardScan™:** (Optional transducer) Offers a 2D sonar view of the bottom ahead of your vessel, aiding in navigation through shallow or poorly charted waters.

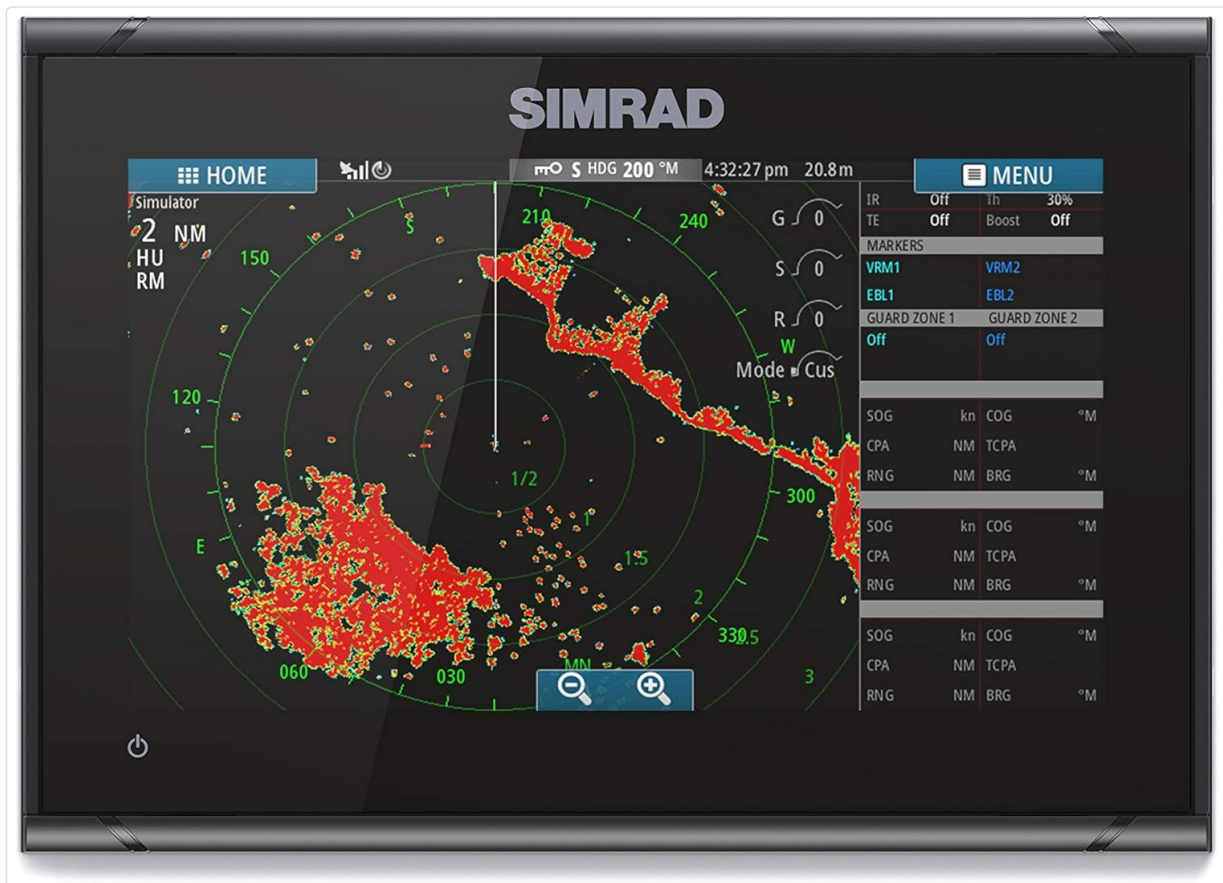


Figure 4: Split-screen view showing chart and detailed sonar imaging.

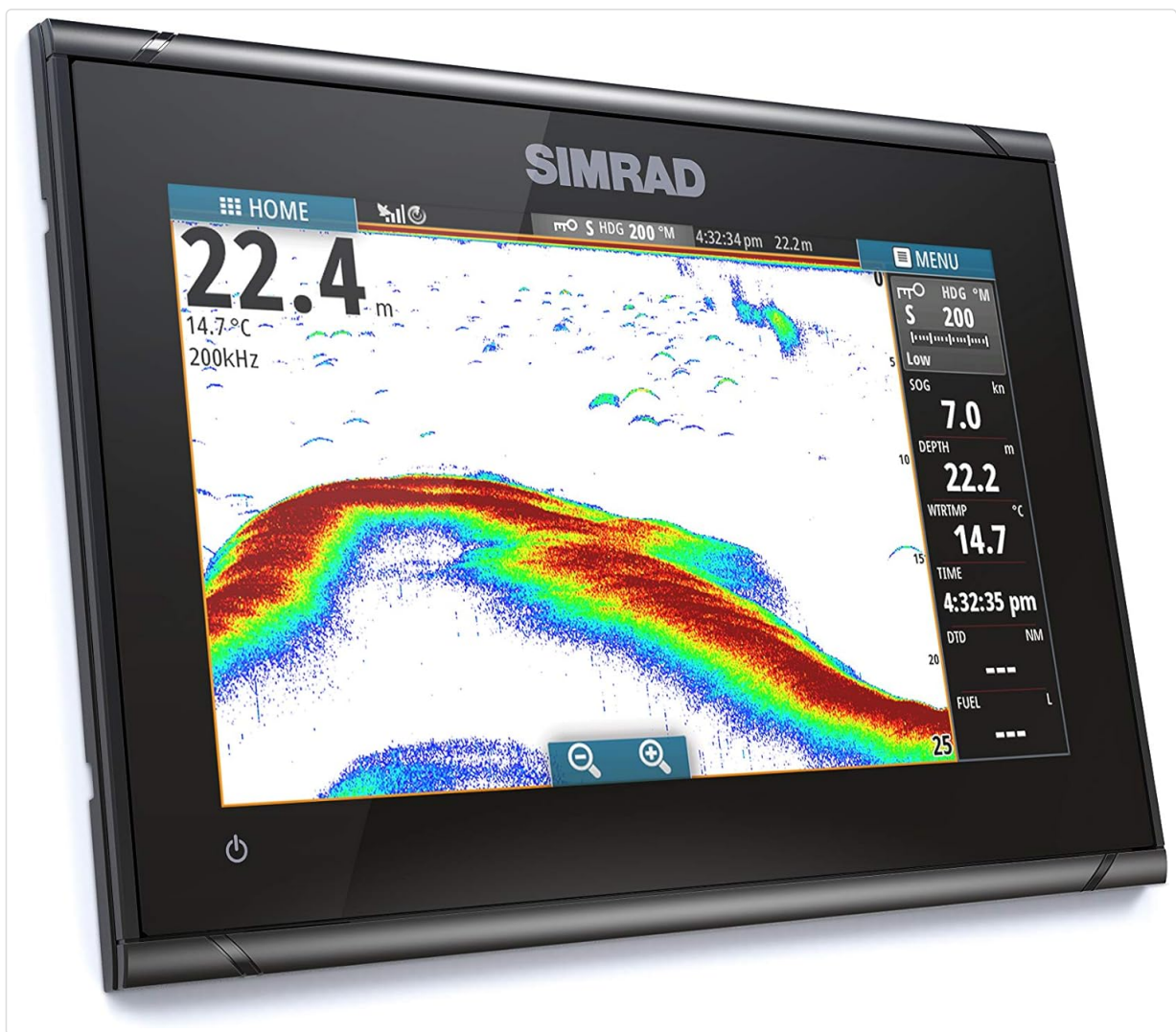


Figure 5: Full-screen sonar display showing underwater details.

4.4 Radar Display

The GO9 XSE Series includes an Integrated Radar Display capability. To utilize this feature, a compatible Simrad radar antenna must be connected to the system. Once connected, select the 'Radar' icon from the home screen to view radar returns, set guard zones, and track targets.



Figure 6: The Simrad GO9 XSE home screen, where the 'Radar' icon can be selected to access radar functions.

4.5 TripIntel™ Technology

Access TripIntel™ from the home screen to monitor key information for safe and enjoyable days on the water. This includes fuel range, current and past trip details, and performance data.

4.6 Autopilot Control

If connected to a compatible Simrad autopilot system, the GO9 XSE can serve as a full-function autopilot controller. Select the 'Autopilot' icon to engage, disengage, and adjust autopilot settings.

5. MAINTENANCE

Regular maintenance ensures the longevity and optimal performance of your Simrad GO9 XSE.

- **Cleaning:** Clean the display screen with a soft, damp cloth and mild soap solution. Avoid abrasive cleaners or solvents.
- **Software Updates:** Periodically check the Simrad website for software updates. Keeping your unit updated ensures access to the latest features and performance enhancements.
- **Cable Inspection:** Regularly inspect all cables and connections for signs of wear, corrosion, or damage. Ensure all connections are secure and watertight.
- **Transducer Care:** If a transducer is installed, keep its face clean from marine growth and debris. Refer to the transducer's specific manual for cleaning instructions.

6. TROUBLESHOOTING

This section addresses common issues you might encounter with your GO9 XSE.

- **No Power:**

- Check all power connections and ensure they are secure.
- Verify the vessel's battery is charged and the main power switch is on.
- Inspect the fuse in the power circuit.

- **No Sonar Data:**

- Ensure a compatible transducer is connected and properly installed.
- Check the transducer cable for damage or loose connections.
- Verify sonar is enabled in the unit's settings.
- Clean the transducer face if marine growth is present.

- **GPS Not Acquiring Position:**

- Ensure the unit has a clear view of the sky.
- Check for any obstructions blocking the GPS antenna (if external).
- Allow sufficient time for initial satellite acquisition.

- **Display Not Responding to Touch:**

- Clean the screen to remove any dirt or water.
- Restart the unit.
- If the issue persists, contact Simrad support.

7. SPECIFICATIONS

Feature	Specification
Model Name	Simrad GO9 XSE
Screen Size	9 Inches
Scanner Resolution	1280 x 720
Human Interface Input	Touchscreen
Connectivity Technology	Cellular, Wi-Fi
Special Features	Touchscreen
Mounting Type	Flush Mount
Map Type	USA (with Insight Map Chart and Navionics+ Chart support)
Item Weight	6 pounds
Manufacturer	Simrad
Date First Available	October 19, 2016

8. WARRANTY AND SUPPORT

For detailed warranty information, please refer to the warranty card included with your product or visit the official Simrad website. Simrad provides comprehensive customer support for all its products.

For technical assistance, product registration, or to find authorized service centers, please visit the [Simrad](#)

[Official Store](#) or their corporate website.

© 2023 Simrad. All rights reserved. Information in this manual is subject to change without notice.