

## Mount-It! MI-879

# Mount-It! Mobile TV Stand User Manual

Model: MI-879

Brand: Mount-It!

## 1. INTRODUCTION

---

Thank you for choosing the Mount-It! Mobile TV Stand, Model MI-879. This stand is designed to provide a versatile and portable solution for mounting flat panel LCD/LED screens ranging from 13 to 42 inches. Its robust construction and adjustable features make it suitable for various environments, including homes, offices, schools, and trade shows. This manual provides essential information for safe installation, operation, and maintenance of your TV stand.





Figure 1: Mount-It! Mobile TV Stand with a television mounted.

## 2. SAFETY INFORMATION

---

Please read all instructions carefully before assembly and use. Failure to follow these instructions may result in property damage, serious injury, or death. If you do not understand these instructions or have doubts about the safety of the installation, please contact customer support.

- **Weight Capacity:** Do not exceed the maximum weight capacity of 44 lbs (20 kg).
- **Screen Size:** This stand is designed for screens between 13 and 42 inches.
- **VESA Compatibility:** Ensure your TV's VESA mounting pattern is compatible (up to 200x200mm).
- **Stability:** Always ensure the stand is on a level surface. Lock the wheels when the stand is stationary to prevent accidental movement.
- **Assembly:** Assemble the product exactly as described in this manual. Do not modify the structure or use parts not supplied by the manufacturer.
- **Children:** Keep children away from the assembly area. Small parts may be a choking hazard.

### 3. PACKAGE CONTENTS

Verify that all components are present and undamaged before beginning assembly. If any parts are missing or defective, contact Mount-It! customer service.



Figure 2: Key components of the Mount-It! Mobile TV Stand.

The package should include:

- Base Assembly (with pre-attached casters)
- Telescopic Pole
- TV Mounting Plate (VESA compatible)
- Hardware Kit (screws, washers, spacers for TV mounting)
- Tools (e.g., Allen wrench, spanner)

### 4. SETUP INSTRUCTIONS

Follow these steps to assemble your mobile TV stand.

#### 4.1 Assemble the Base

1. Unpack the base components. The wide 18" x 20" base features four swiveling wheels.
2. Ensure the two locking casters are in the unlocked position during assembly.



Figure 3: Detail of the stand's base with locking wheels.

#### 4.2 Attach the Telescopic Pole

3. Insert the bottom section of the telescopic pole into the central opening of the base.
4. Secure the pole to the base using the provided bolts and tools. Ensure it is firmly tightened for stability.

#### 4.3 Install the TV Mounting Plate

5. Attach the VESA compatible TV mounting plate to the top section of the telescopic pole.
6. Use the provided screws and nuts to secure the mounting plate.





Figure 4: VESA mounting plate attachment.

#### 4.4 Mount Your Television

7. Before mounting, identify the VESA pattern on the back of your TV. Refer to Figure 5 for common VESA patterns.
8. Select the appropriate screws, washers, and spacers from the hardware kit that match your TV's VESA holes.
9. Carefully attach the TV to the mounting plate. It is recommended to have assistance when lifting and positioning the TV.
10. Ensure all screws are securely tightened, but do not overtighten.







Figure 5: VESA mounting patterns supported.

## 5. OPERATING INSTRUCTIONS

This section details how to use the adjustable features of your mobile TV stand.

### 5.1 Adjusting Height

The telescopic pole allows for height adjustment. To adjust the height:

1. Loosen the height adjustment knob or lever on the telescopic pole.
2. Carefully raise or lower the TV to the desired viewing height. The maximum stand height (center of TV) is 52 inches, with a minimum height of 36 inches.
3. Once the desired height is reached, securely tighten the adjustment knob/lever to lock the pole in place.

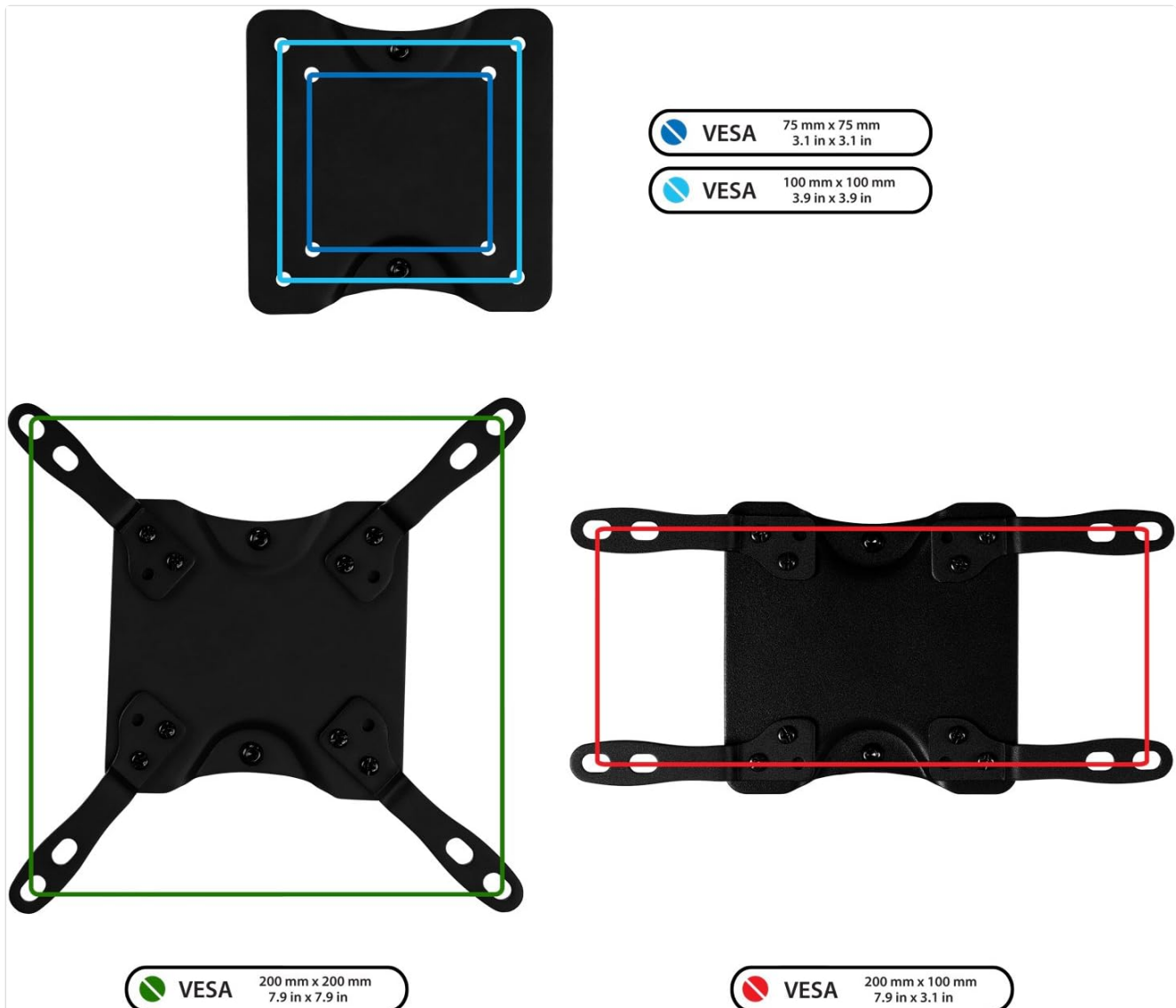


Figure 6: Height adjustment and dimensions.

### 5.2 Adjusting Tilt Angle

The TV bracket allows for a downward tilt of up to 30 degrees for optimal viewing angles.

1. Locate the tilt adjustment mechanism on the TV mounting plate.
2. Loosen the tilt knobs or bolts.
3. Adjust the screen to the desired downward angle.
4. Securely tighten the tilt knobs/bolts to fix the angle.







Figure 7: Television tilt adjustment.

### 5.3 Moving the Stand

The stand is equipped with four swiveling wheels for easy mobility.

- **To Move:** Ensure the two locking casters are in the unlocked position. Gently push the stand to its new location.
- **To Secure:** Once the stand is in the desired position, press down on the levers of the two locking casters to engage the brakes. This will prevent unintended movement.



**FITS MOST FLAT PANEL TELEVISIONS UP TO 42"**

Figure 8: Mobile TV Stand ready for use.

## 6. MAINTENANCE

---

Regular maintenance ensures the longevity and safe operation of your TV stand.

- **Cleaning:** Wipe the stand with a soft, damp cloth. Avoid abrasive cleaners or solvents that could damage the

finish.

- **Hardware Check:** Periodically check all bolts and screws to ensure they remain tight. Retighten if necessary.
- **Caster Inspection:** Inspect the wheels for any debris or damage that might impede smooth movement. Clean or replace as needed.
- **Weight Limit:** Do not place items on the stand that exceed its stated weight capacity.

## 7. TROUBLESHOOTING

If you encounter issues with your Mount-It! Mobile TV Stand, refer to the following common problems and solutions.

### 7.1 Stand is Unstable

- **Check Assembly:** Ensure all bolts and screws are securely tightened, especially those connecting the pole to the base and the mounting plate to the pole.
- **Level Surface:** Verify that the stand is placed on a flat, level surface.
- **Weight Distribution:** Ensure the TV is centered on the mounting plate and its weight does not exceed the stand's capacity.

### 7.2 Difficulty Adjusting Height/Tilt

- **Loosen Fasteners:** Ensure the height adjustment knob/lever and tilt adjustment knobs/bolts are sufficiently loosened before attempting to adjust.
- **Obstructions:** Check for any obstructions or debris in the adjustment mechanisms.

### 7.3 Wheels Not Rolling Smoothly or Locking

- **Clear Debris:** Remove any hair, dust, or debris that may be caught in the casters.
- **Lubrication:** A small amount of silicone spray can improve wheel movement if they are stiff.
- **Locking Mechanism:** Ensure the locking levers are fully engaged or disengaged.

## 8. SPECIFICATIONS

Detailed technical specifications for the Mount-It! Mobile TV Stand MI-879.

Feature	Specification
Model Number	MI-879
Material	Alloy Steel (Cold Rolled Steel Construction)
Color	Black
Compatible TV Sizes	13" - 42" Flat Panel LCD LED Screens
Weight Capacity	Up to 44 lbs (20 kg)
VESA Compatibility	Up to 200x200mm (e.g., 75x75, 100x100, 200x100, 200x200)
Height Adjustment	Telescopic, Max 52" (center of TV), Min 36"
Tilt Angle	30 degrees downward
Base Dimensions	18" x 20"

Feature	Specification
Mobility	4 Swiveling Wheels, 2 Locking Casters
Item Weight	Approximately 0.01 ounces (product data indicates this, actual shipping weight will be higher)
UPC	713012040154

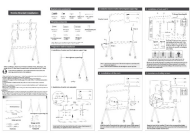

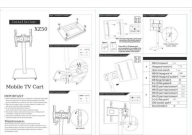
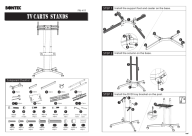

## 9. WARRANTY & SUPPORT

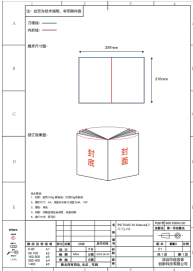
Mount-It! products are designed for durability and performance. For information regarding warranty coverage, please refer to the warranty card included with your product or visit the official Mount-It! website.

If you require technical assistance, have questions about assembly, or need to report missing/damaged parts, please contact Mount-It! customer support. Contact details can typically be found on the product packaging or the brand's official website.

**Online Resources:** For additional support, FAQs, and product registration, please visit the [Mount-It! Brand Store on Amazon](#).

### Related Documents - MI-879

	<a href="#">BEISHI Mobile TV Stand Installation Guide</a> Comprehensive installation guide for the BEISHI mobile TV stand, featuring step-by-step instructions, accessory lists, and safety tips for assembling and mounting your TV.
	<a href="#">ONKRON TS2821 Mobile TV Stand - User Manual and Assembly Guide</a> Detailed user manual and assembly guide for the ONKRON TS2821 mobile TV stand. Learn how to safely assemble, operate, and maintain this height-adjustable TV cart for screens up to 110 inches.
	<a href="#">XZ50 Mobile TV Cart Installation Guide</a> Step-by-step installation instructions for the XZ50 Mobile TV Cart, a height-adjustable rolling TV stand designed for 32 to 65 inch flat panel screens. Includes parts list and important safety information.
	<a href="#">BONTEC FN-411 TV Cart Stand Installation Guide</a> Detailed installation instructions for the BONTEC FN-411 Mobile TV Cart Stand, including component checklist and step-by-step assembly guidance for 32-85 inch TVs.
	<a href="#">ONKRON TS1380 Mobile TV Cart User Manual and Assembly Guide</a> Comprehensive guide for assembling and using the ONKRON TS1380 mobile TV cart, designed for TVs and interactive touch panels from 50" to 83". Includes safety instructions, parts list, and step-by-step assembly procedures.



### Perlegear PGTVMC14 TV Cart Instruction Manual

Instruction manual for the Perlegear PGTVMC14 TV Cart, detailing assembly, safety information, and usage instructions for mounting TVs from 32 to 70 inches.

Documents - Mount-It! – MI-879



[\[pdf\]](#) User Manual Dimension Guide

MI 879 LCD S05 KP01 manual V1 MOBILE TV STAND Attach the VESA Plate using selected bolts and washers then tighten until secure Do not over to With Extenders 1232246 bhphotovideo lit files |||

**MI-879** V1 05/24 Scan this QR code for product information, videos, and assembly assistance. MOBILE TV STAND Thank you for choosing Mount-It Mount-It Mount-It 2 PACKAGE CONTENTS Base Feet Pole VESA Plate Non- Locking Locking Caster Caster VESA VESA Decorative Extenders Extenders Cover B...

lang:en **score:22** filesize: 16.83 M page\_count: 7 document date: 2024-05-15



[\[pdf\]](#) User Manual Accessories Catalog

catalog Mount It! Manual Handle Lift Swivel Arm 360° Number of Monitors 1 Landscape to Portrait Yes Monitor Tilt 90 Degrees 20 Height Adjustability 17 Lt Product Catalog mount it pub media catalog PRODUCT Premium Products at Affordable Prices Table of Contents TV Mounts..... .. tee China SPECIFICATIONS 30 NA 75x75mm 200x200mm 44 lbs 29.5 52 Aluminum, Steel China MODEL: **MI-879** Tilt Swivel VESA TV Load Capacity Height: Materials Country of Origin SPECIFICATIONS 30 NA...

lang:en **score:14** filesize: 43.86 M page\_count: 112 document date: 2017-08-29



### [MOUNT-IT! 2020 Product Catalog](#)

Explore the comprehensive 2020 Product Catalog from MOUNT-IT!, showcasing a wide range of mounting solutions and office furniture. This catalog features TV mounts, monitor mounts, ergonomic desks, laptop accessories, tablet solutions, and various office essentials designed to enhance productivity and comfort in any environment.

lang:en score:13 filesize: 24.9 M page\_count: 113 document date: 2020-12-30