



Manuals.plus /

› Aideepen /

› Aideepen TDA7492P 2x50W Dual Channel Amplifier Board User Manual

Aideepen TDA7492P

Aideepen TDA7492P 2x50W Dual Channel Amplifier Board User Manual

Model: TDA7492P | Brand: Aideepen

1. PRODUCT OVERVIEW

The Aideepen TDA7492P 2x50W Dual Channel Amplifier Board is designed to provide high-quality stereo audio amplification for various speaker systems. Featuring Bluetooth wireless connectivity, this board is suitable for home or vehicle audio streaming applications.

Key Features:

- **50W+50W HIFI Board:** Delivers 2x50W of power for multi-speaker setups with 8 ohms impedance.
- **Upgraded Version (AD-001):** Incorporates the TDA7492P chip with enhanced capacitor resistance for improved stereo sound and better heat dissipation. Features gold-plated mounting holes for durability and aesthetics.
- **Bluetooth Connectivity:** Compatible with most smartphones for wireless music streaming. Note: Not compatible with computers.
- **Integrated Control Buttons:** Includes responsive buttons for power, previous track, next track, play/pause, volume up, and volume down. A Bluetooth indicator flashes red and blue alternately when ready for pairing.
- **Compact Design, Powerful Sound:** Despite its small size, this amplifier can achieve 110-120 dB output with high-efficiency drivers.

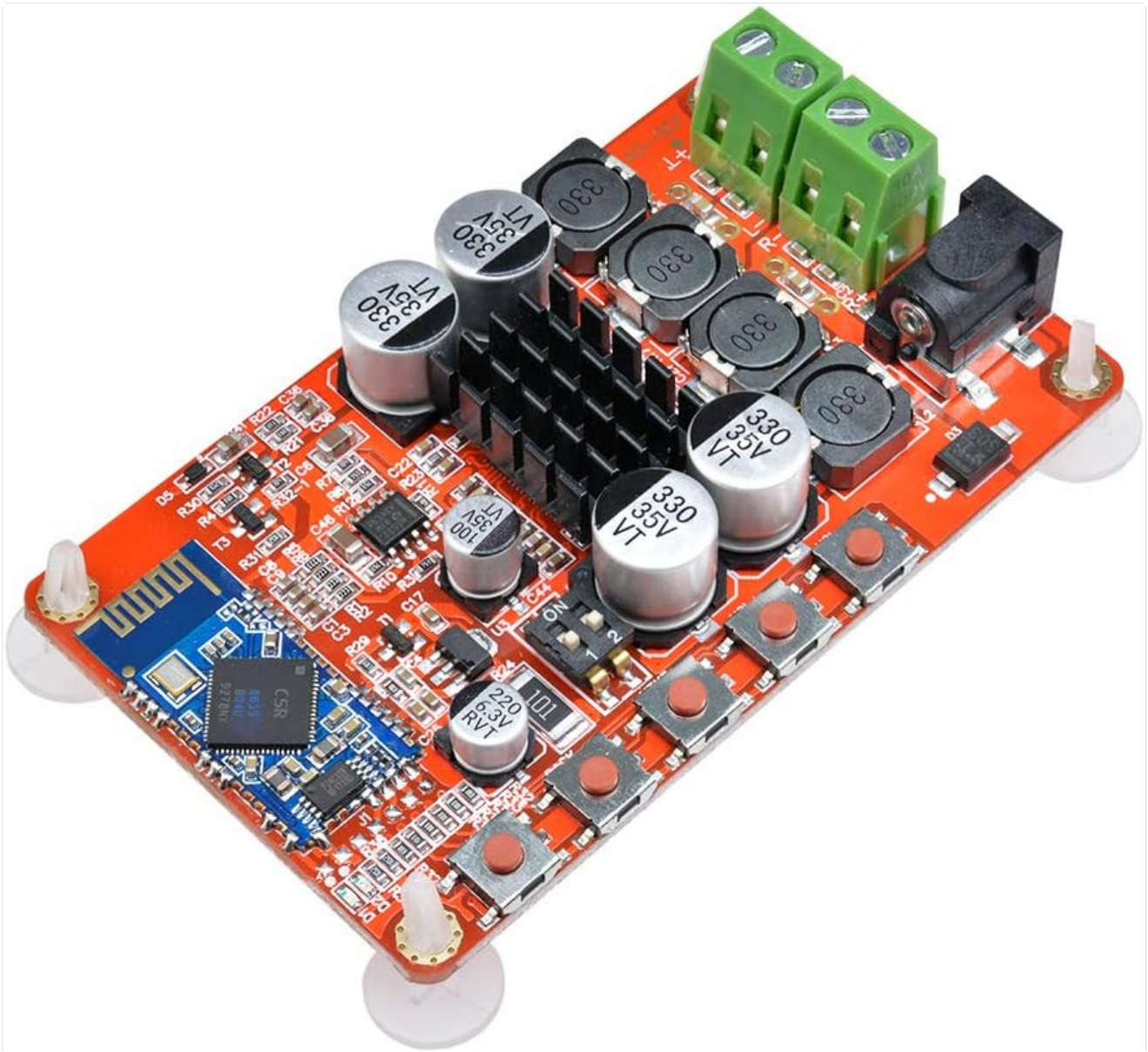


Figure 1.1: Top view of the Aideepen TDA7492P Dual Channel Amplifier Board.

2. PACKAGE CONTENTS

Ensure all items are present and in good condition upon opening the package.

- 1x TDA7492P Audio Receiver Amplifier Board



Figure 2.1: The amplifier board as received in its packaging.

3. SAFETY INFORMATION

Please read and understand all safety instructions before operating this device. Failure to follow these instructions may result in electric shock, fire, or other hazards.

- **Power Supply:** Use a DC power supply between 8V and 24V. Ensure the power supply's output current is sufficient (at least 2A recommended for optimal performance). The power connector is 5.5mm outside diameter, 2.1mm inside diameter, with positive on the inside and negative on the outside.
- **Wiring:** Always distinguish between positive and negative terminals when connecting speakers. Incorrect wiring can damage the amplifier board or speakers.
- **Environment:** Do not expose the device to moisture, extreme temperatures, or direct sunlight. Operate in a well-ventilated area.
- **Handling:** Avoid touching the circuit board components while the device is powered on.

4. SETUP INSTRUCTIONS

Follow these steps to set up your Aideepen TDA7492P amplifier board.

1. **Prepare Speakers:** Ensure your speakers are rated for 8 ohms impedance. Strip a small amount of insulation from the ends of your speaker wires.
2. **Connect Speakers:** Loosen the screws on the green terminal blocks (speaker outputs) on the amplifier board. Carefully insert the speaker wires, ensuring the positive (+) and negative (-) wires are connected to the corresponding terminals for each channel (L+ L- for left, R+ R- for right). Tighten the screws to secure the wires.
3. **Connect Power:** Plug a compatible DC power adapter (8-24V, at least 2A, 5.5x2.1mm barrel connector, center positive) into the power input jack on the board.
4. **Power On:** After connecting the power, the Bluetooth indicator LED on the board will begin to flash, indicating it is ready for pairing.

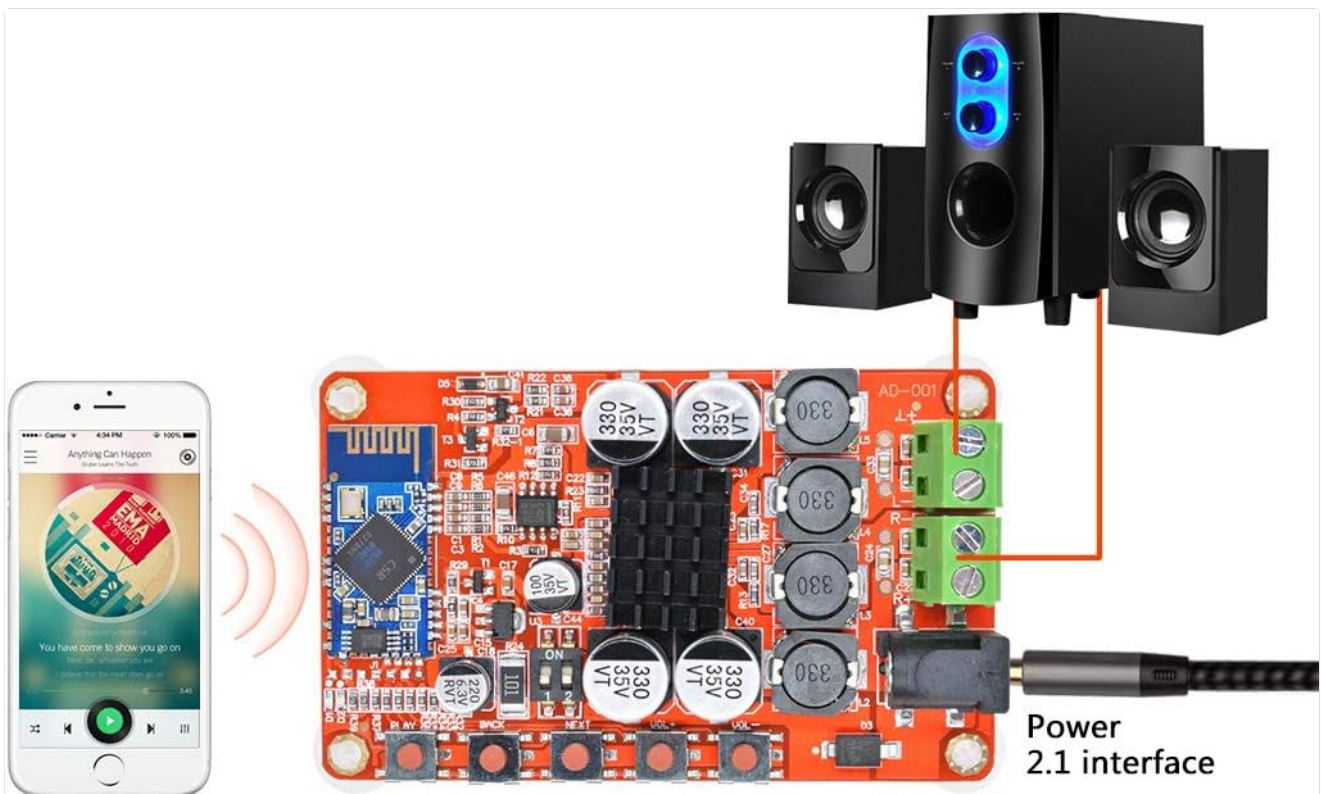


Figure 4.1: Detailed view of speaker and power connection points on the amplifier board.

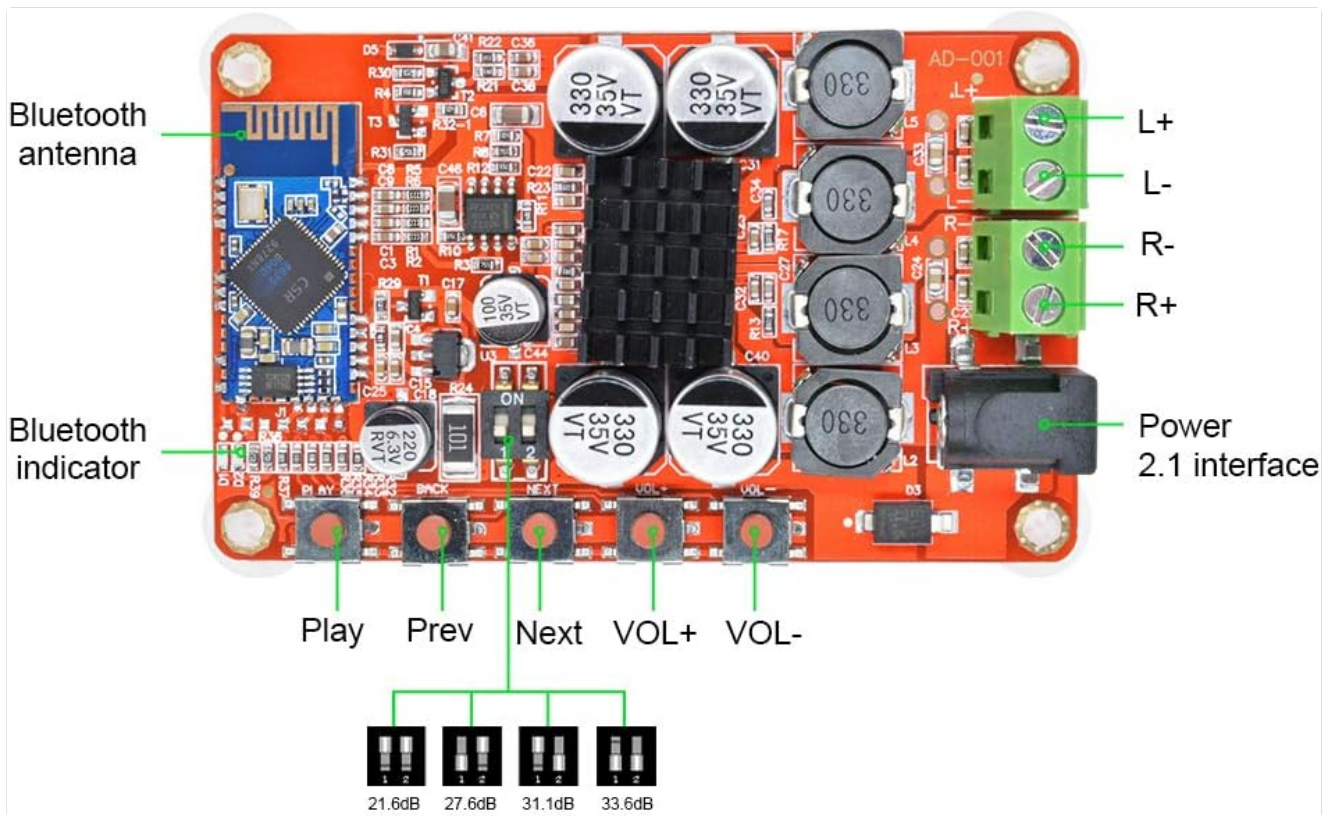


Figure 4.2: Labeled diagram of the amplifier board showing Bluetooth antenna, indicator, buttons, and power interface.

Setup and Connection Video:

Your browser does not support the video tag.

Video 4.1: Official Aideepen video demonstrating the installation steps and Bluetooth connection process for the amplifier board.

5. OPERATING INSTRUCTIONS

Once the amplifier board is set up, you can begin streaming audio wirelessly.

1. Bluetooth Pairing:

- Ensure the amplifier board is powered on and the Bluetooth indicator is flashing (red and blue alternately).
- On your smartphone or other Bluetooth-enabled device, navigate to the Bluetooth settings.
- Search for available devices. The amplifier board will typically appear as "SANWU Audio" or a similar identifier.
- Select the amplifier board to pair. Once connected, the Bluetooth indicator LED will typically show a solid blue light or a slower flash.

2. Audio Playback:

- Open your preferred music player application on your connected device.
- Start playing audio. Sound will be routed through the amplifier board to your connected speakers.

3. Using On-Board Controls: The amplifier board features several buttons for direct control:

- **PLAY/PAUSE:** Toggles playback.
- **PREV:** Skips to the previous track.

- **NEXT:** Skips to the next track.
- **VOL+:** Increases volume.
- **VOL-:** Decreases volume.

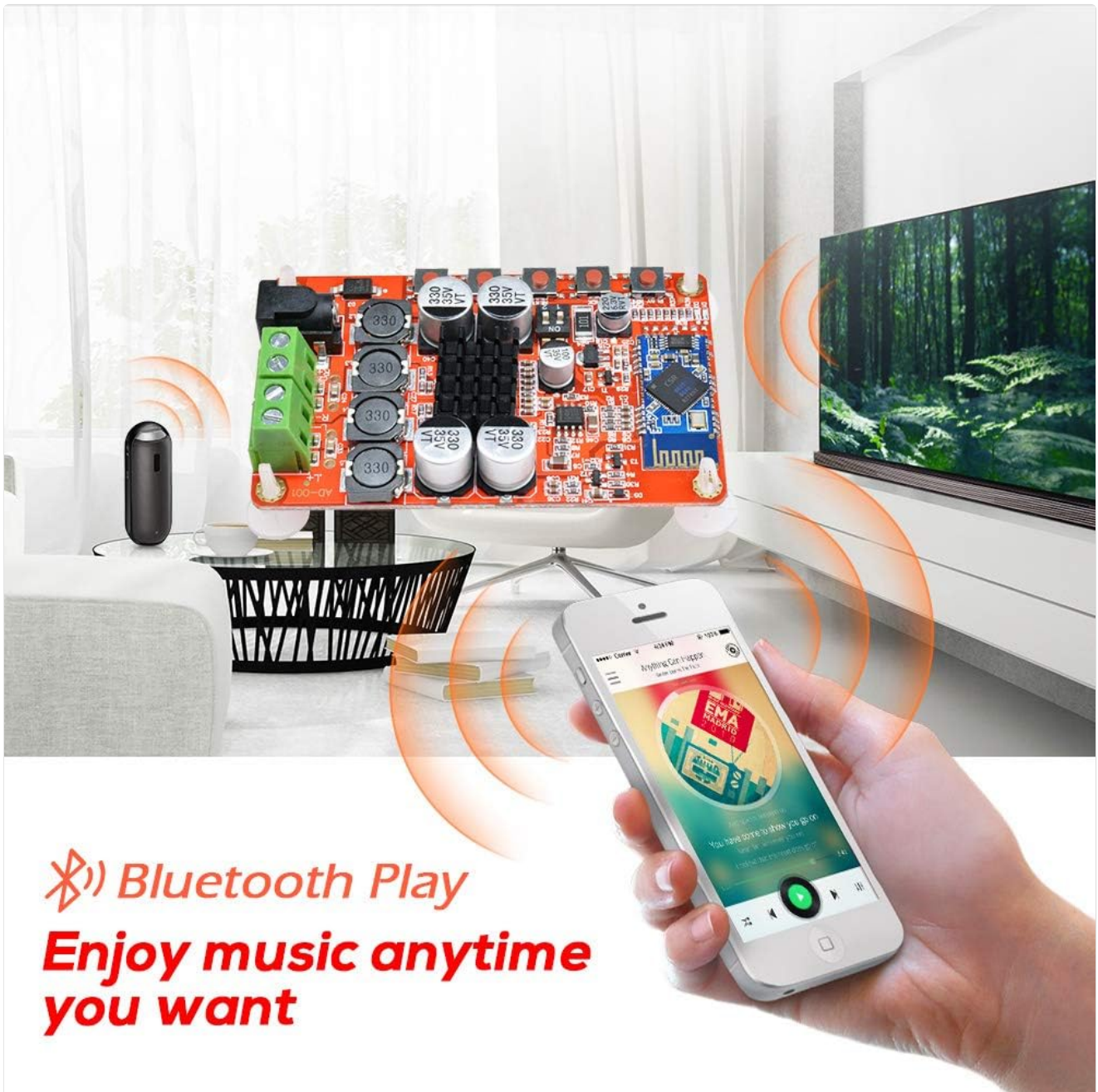


Figure 5.1: The amplifier board connected to speakers and streaming music from a smartphone via Bluetooth.

6. MAINTENANCE

Proper maintenance ensures the longevity and optimal performance of your amplifier board.

- **Cleaning:** Use a soft, dry cloth to gently wipe the surface of the board. Avoid using liquid cleaners or solvents, as these can damage components.
- **Storage:** When not in use for extended periods, store the board in a cool, dry place away from direct sunlight and dust.
- **Handling:** Always handle the board by its edges to avoid touching sensitive electronic components.

7. TROUBLESHOOTING

If you encounter issues with your amplifier board, refer to the following common problems and solutions:

Problem	Possible Cause	Solution
No sound from speakers	<ul style="list-style-type: none">• Incorrect speaker wiring• Loose speaker connections• Insufficient power supply• Device not paired via Bluetooth• Volume too low	<ul style="list-style-type: none">• Verify speaker wire polarity (+/-) and connections.• Ensure speaker wires are securely tightened in the terminals.• Check power supply voltage (8-24V DC) and current (at least 2A).• Confirm successful Bluetooth pairing (solid blue indicator).• Increase volume on both the amplifier board and the connected device.
Bluetooth not connecting	<ul style="list-style-type: none">• Board not in pairing mode• Device too far from board• Interference	<ul style="list-style-type: none">• Ensure the Bluetooth indicator is flashing red and blue. If not, power cycle the board.• Move your device closer to the amplifier board.• Minimize other wireless devices nearby.
Static or distorted sound	<ul style="list-style-type: none">• Poor power supply quality• Speaker impedance mismatch• Volume too high (clipping)	<ul style="list-style-type: none">• Use a stable and clean power supply.• Ensure speakers are 8 ohms.• Reduce volume to prevent distortion.
Loud beep/chirp during power on/off or Bluetooth disconnect	This is a characteristic of the board's design.	This is normal operation and cannot be adjusted.

8. SPECIFICATIONS

Detailed technical specifications for the Aideepen TDA7492P Amplifier Board.

Specification	Value
Model	TDA7492P
Output Power	2x50W (50W per channel)
Number of Channels	2 (Stereo)
Minimum Supply Voltage	8 Volts (DC)
Maximum Supply Voltage	24 Volts (DC)
Speaker Impedance	8 Ohms (recommended)
Bluetooth Version	WL Digital BT Audio Receiver
Item Dimensions (L x W x H)	3.9 x 2 x 1.2 inches
Mounting Type	Surface Mount

9. WARRANTY AND SUPPORT

The Aideepen TDA7492P Dual Channel Amplifier Board comes with a **6-month extended warranty**.

For technical assistance, troubleshooting, or warranty claims, please contact Aideepen customer service. Our team is available 24/7 to provide friendly support.

Contact Information:

- **Website:** www.aideepen.com (Please check the official website for the most current contact details.)
- **Email:** Refer to product packaging or official website for support email.