

## Graco 241623

# Graco 241623 Pump Repair Kit Instruction Manual

For Graco 50:1 Fireball Pumps and Dynastar 10:1 Grease Pumps

## 1. INTRODUCTION

This instruction manual provides detailed information for the Graco 241623 Pump Repair Kit. This kit contains genuine Graco replacement parts essential for maintaining the performance and longevity of your Graco 50:1 Fireball Pumps and Dynastar 10:1 Grease Pumps. Adherence to these instructions ensures proper repair and safe operation.

## 2. IMPORTANT SAFETY INFORMATION

**Always use genuine Graco parts and accessories.**

For detailed warnings and instructions specific to your pump model, refer to the following manuals:

- For 50:1 Fire-Ball Pumps: Manual Number **308883**
- For 10:1 Dyna-Star Pumps: Manual Number **312350**

Ensure all safety precautions outlined in your pump's primary manual are followed during the repair process. Disconnect power and relieve pressure before beginning any maintenance.

**Always use genuine Graco parts and accessories**

**Utilice siempre piezas y accesorios originales Graco**

#### Important Safety Instructions

For detailed instructions and warnings, refer to these manuals:

Pump	Manual Number
50:1 Fire-Ball 300	308883
10:1 Dyna-Star	312350

#### Instrucciones de seguridad importantes

Para obtener instrucciones detalladas y advertencias, consulte estos manuales:

Bomba	Número de manual
50:1 Fire-Ball 300	308883
10:1 Dyna-Star	312350

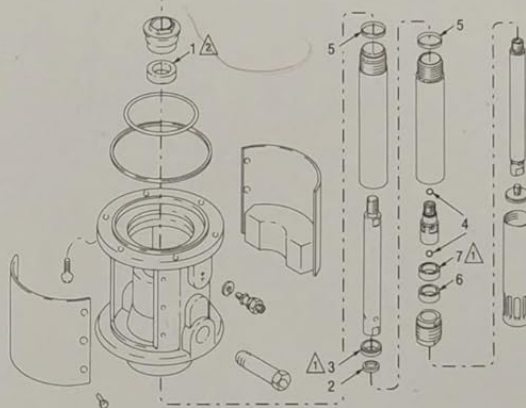
Ref. No.	Description	Qty.
1	SEAL, throat	1
2*	BEARING, piston	1
3	SEAL, piston	1
4	BALL	2
5	SEAL, gasket	2
6	BEARING, shovel rod	1
7	SEAL, shovel rod	1

\* Used in Series A pumps only.

Pump series is indicated by the last letter of the series code marked on the air motor muffler plate.

△ Lips face up.

△ Lips face down.



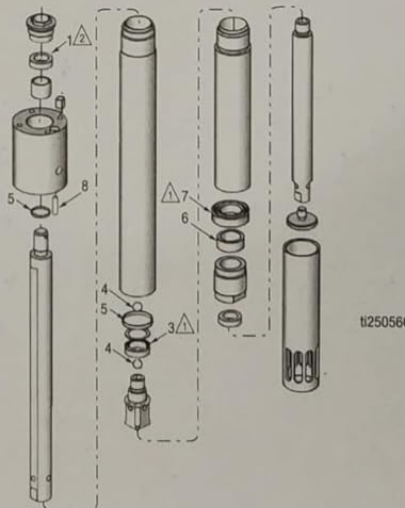
Ref. No.	Description	Qty.
1	SEAL, throat	1
3	SEAL, piston	1
4	BALL	2
5	SEAL, gasket	2
6	BEARING, shovel rod	1
7	SEAL, shovel rod	1
8**	PELLET, nylon	1

\*\* Not used with Series A or B pump models.

Pump series is indicated by the last letter of the series code marked on the air motor muffler plate.

△ Lips face up.

△ Lips face down.



©2015 Graco Inc. 412018 / 419195

Image: Back of the repair kit packaging, displaying important safety instructions and initial diagrams for pump repair.

### 3. KIT CONTENTS

The Graco 241623 Pump Repair Kit includes the following components:



Image: A close-up of the individual components within the repair kit, including seals, bearings, and balls.

**Kit No. 241623 Components**

Ref.	Description	Qty.
1	SEAL, throat	1
2*	BEARING, piston	1
3^	SEAL, piston	1
4	BALL	2
5	SEAL, gasket	2
6	BEARING, shovel rod	1
7^	SEAL, shovel rod	1

*\*Used in Series A pumps only.*  
*^Pump series is indicated by the last letter of the series code marked on the air motor muffler plate.*

**4. COMPATIBILITY**

This Graco 241623 Pump Repair Kit is specifically designed for use with:

- Graco 50:1 Fireball Pumps
- Graco Dynastar 10:1 Grease Pumps

Ensure your pump model matches these specifications before attempting repair.

5. REPAIR PROCEDURE

The following diagrams illustrate the general assembly and component placement for the 50:1 Fire-Ball pump. Refer to your specific pump's manual (308883 or 312350) for detailed disassembly and reassembly steps.

USE GENUINE GRACO PARTS AND ACCESSORIES



Pump Repair Kit 241623

406427E

For 50:1 Fire-Ball and Dyna-Star 10:1 Grease Pumps

EN

Kit No. 241623



Important Safety Instructions

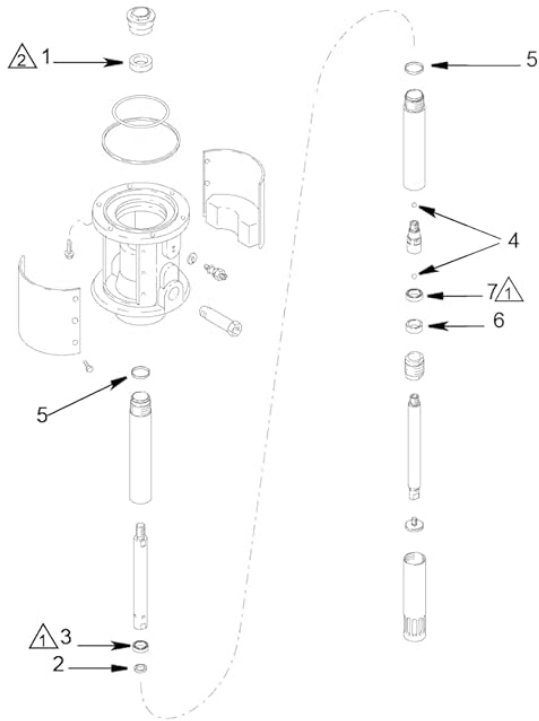
Read all warnings and instructions in manual 308883 for Fire-Ball model and 312350 for Dyna-Star model grease pumps. Save those instructions.

50:1 Fire-Ball

Ref.	Description	Qty.
1	SEAL, throat	1
2*	BEARING, piston	1
3	SEAL, piston	1
4	BALL	2
5	SEAL, gasket	2
6	BEARING, shovel rod	1
7	SEAL, shovel rod	1

\*Used in Series A pumps only.

Pump series is indicated by the last letter of the series code marked on the air motor muffler plate.



Lips face up.

Lips face down.

Graco Inc. P.O. Box 1441 Minneapolis, MN 55440-1441  
MM406427, 406427 Rev,E October 2015  
Copyright 2000, Graco Inc. is registered to I.S. EN ISO 9001

Image: Detailed instruction sheet with exploded view diagrams for pump repair, including part references.

Key Assembly Notes:

- **Seal Orientation:** Pay close attention to the orientation of seals. Diagrams indicate **Lips face up** and

**Lips face down** for correct installation. Incorrect orientation can lead to leaks or improper pump function.

- **Component Placement:** Use the reference numbers in the diagram to match each kit component to its correct position within the pump assembly.
- **Series A Pumps:** Note that specific parts (e.g., BEARING, piston (2\*) and SEAL, piston (3^), SEAL, shovel rod (7^)) are used exclusively in Series A pumps. Verify your pump's series code on the air motor muffler plate.

Always ensure all components are clean and free of debris before reassembly. Apply appropriate lubricants as specified in your pump's main manual.

## 6. SPECIFICATIONS

Specification	Detail
Manufacturer	Graco Mfg
Part Number	241623
Item Model Number	241623
Item Weight	2.08 ounces
Product Dimensions	9 x 7 x 2 inches
Style	Repair Kit
UPC	614042840847
Date First Available	January 21, 2017

## 7. MANUFACTURER INFORMATION

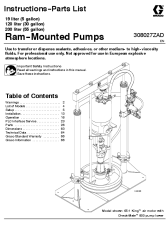
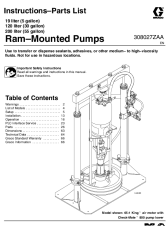
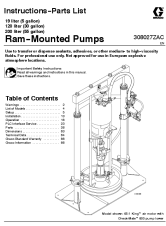
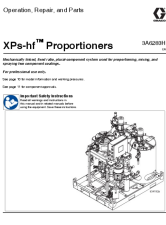

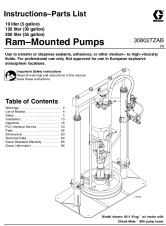
For warranty information, technical support, or further inquiries, please contact Graco directly. Always refer to your original product documentation for specific warranty terms.

Graco Inc.  
P.O. Box 1441  
Minneapolis, MN 55440-1441  
USA

*Copyright © 2000, Graco Inc. Registered to I.S. EN ISO 9001*

This manual is for informational purposes only. Graco is a registered trademark.

### Related Documents - 241623

	<p><a href="#">Graco Ram-Mounted Pumps: Instructions &amp; Parts List (308027ZAD)</a></p> <p>This comprehensive manual from Graco provides detailed instructions and a parts list for their Ram-Mounted Pumps (Models 19L, 120L, 200L). It covers essential information for professional users, including setup, installation, operation, safety warnings, technical specifications, and a complete breakdown of parts for various pump models. Ideal for fluid transfer and dispensing applications in industrial settings.</p>
	<p><a href="#">Graco Ram-Mounted Pumps: Instructions and Parts List</a></p> <p>Comprehensive instructions and parts list for Graco Ram-Mounted Pumps, covering safety, model specifications, setup, installation, operation, and technical data for various industrial fluid transfer applications.</p>
	<p><a href="#">Graco Ram-Mounted Pumps: Instructions and Parts List (Model 308027ZAC)</a></p> <p>Comprehensive instructions and parts list for Graco Ram-Mounted Pumps, covering setup, installation, operation, and technical specifications for various models. Essential guide for professional use.</p>
	<p><a href="#">Graco XPs-hf Proportioners: Operation, Repair, and Parts Manual (3A6283H)</a></p> <p>This manual provides detailed instructions for the operation, repair, and parts identification of Graco XPs-hf plural-component spray systems, designed for professional industrial applications involving two-component coatings.</p>
	<p><a href="#">Graco EP-120 and EC-120 Lubricators: User Guide and Safety Instructions</a></p> <p>This document provides detailed instructions for the installation, operation, safety, and maintenance of Graco EP-120 and EC-120 automatic lubricators, including technical specifications and troubleshooting.</p>
	<p><a href="#">Graco Ram-Mounted Pumps: Instructions and Parts Manual</a></p> <p>This Graco Ram-Mounted Pumps instruction and parts manual (document 308027ZAB) provides essential guidance for professional users. It details setup, installation, operation, safety warnings, and a comprehensive parts list for various Graco pump models, including Monark, President, Bulldog, King, Senator, and Check-Mate series. Essential for maintaining and operating Graco's high-viscosity fluid dispensing equipment.</p>