

## SFA CUBIC1NM

# SFA Sanicubic 1 Lifting Station - Instruction Manual

Model: CUBIC1NM | Brand: SFA

## 1. INTRODUCTION

The SFA Sanicubic 1 is a high-performance lifting station designed to efficiently manage and discharge all wastewater from a household or small commercial establishment. Equipped with a powerful motor and a durable Pro X K2 macerating system, it can handle wastewater from WCs, bathrooms, kitchens, and utility rooms. Its robust design ensures reliable operation and easy maintenance, making it an ideal solution for properties where gravity drainage is not feasible.

This manual provides essential information for the safe installation, operation, and maintenance of your Sanicubic 1 unit. Please read it thoroughly before proceeding with any steps.

## 2. SAFETY INFORMATION

Always observe the following safety precautions to prevent injury and damage to the unit:

- Installation and maintenance should only be performed by qualified personnel in accordance with local plumbing and electrical codes.
- Always disconnect the power supply to the unit before performing any inspection, maintenance, or repair work.
- Do not operate the unit if it is damaged or if any electrical components are exposed to water.
- Ensure proper ventilation around the unit as specified in installation guidelines.
- The unit is designed for domestic and light commercial wastewater only. Do not discharge corrosive chemicals, solvents, or solid objects that could damage the macerator.

## 3. PACKAGE CONTENTS

Upon unpacking, please verify that all components are present and undamaged:

- SFA Sanicubic 1 Lifting Station unit

- Integrated non-return valve
- Alarm box (with 5m cable)
- Installation accessories (e.g., clamps, connectors, flexible sleeves)
- Instruction Manual (this document)

If any items are missing or damaged, please contact your supplier immediately.

## 4. PRODUCT OVERVIEW

Familiarize yourself with the components and connections of the Sanicubic 1.



Figure 4.1: Front-top view of the SFA Sanicubic 1 lifting station, showing the main housing, inlet connections, and discharge outlet.

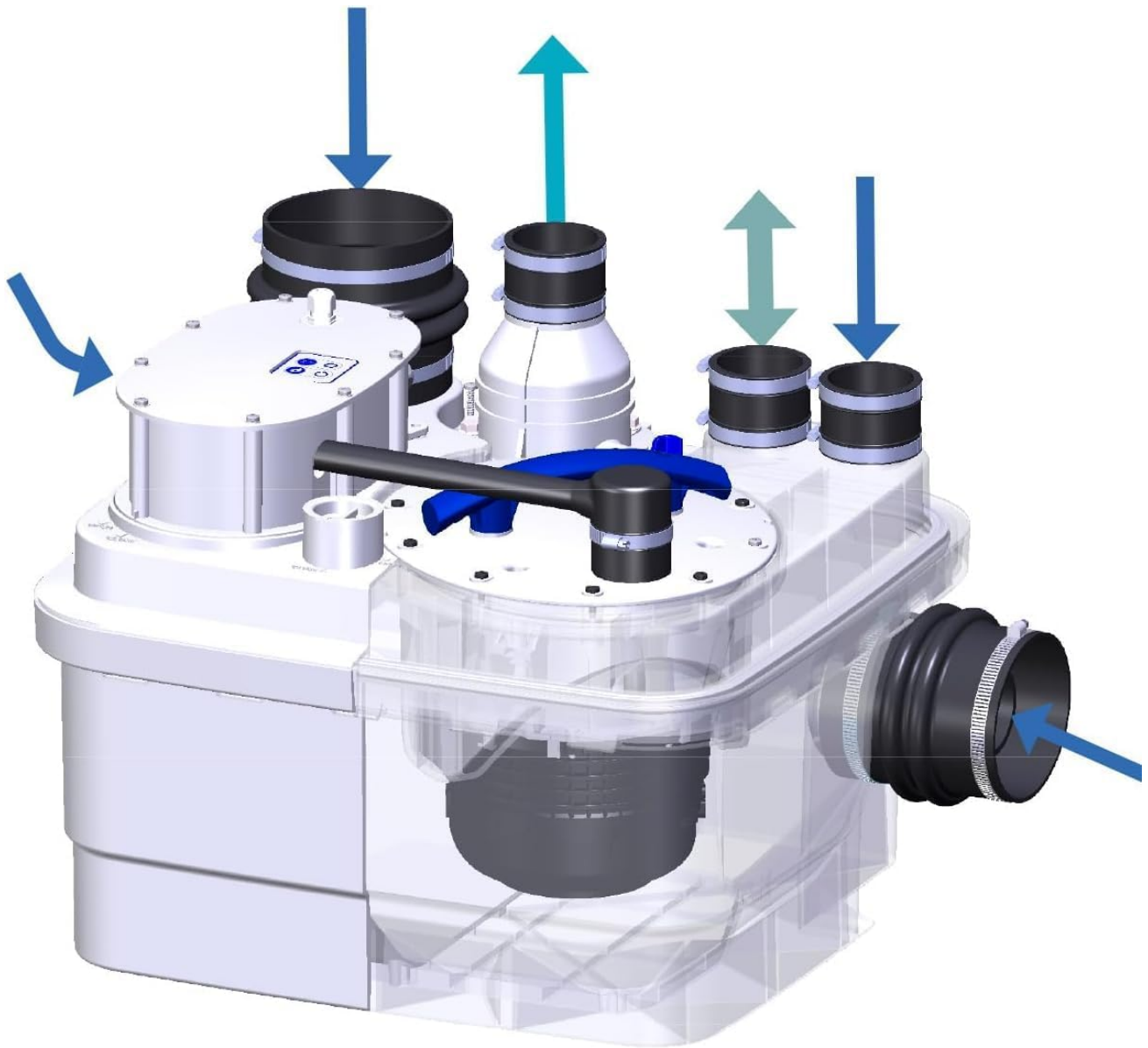


Figure 4.2: Diagram illustrating the flow of wastewater into and out of the Sanicubic 1, indicating inlet and outlet connections.

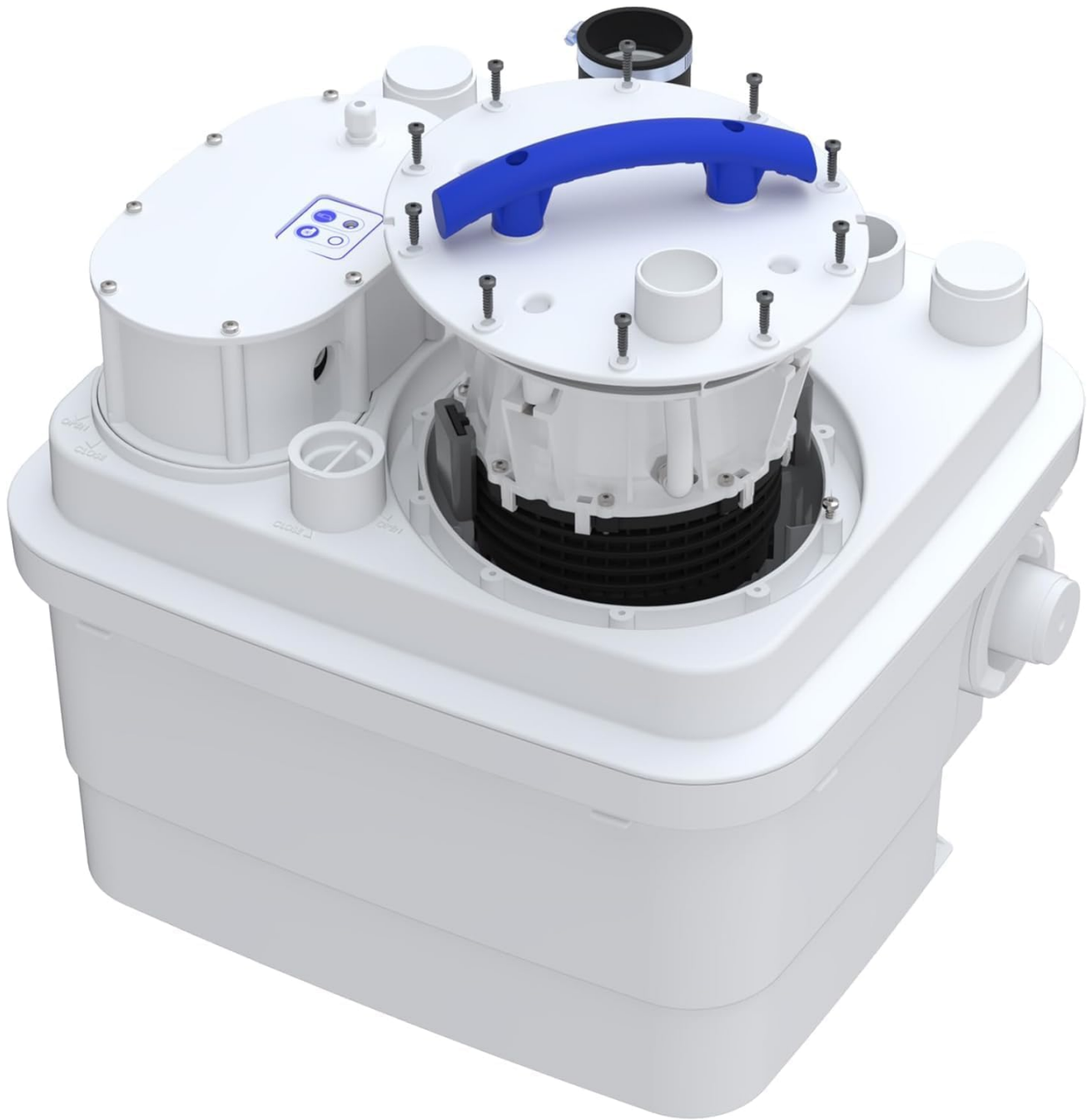
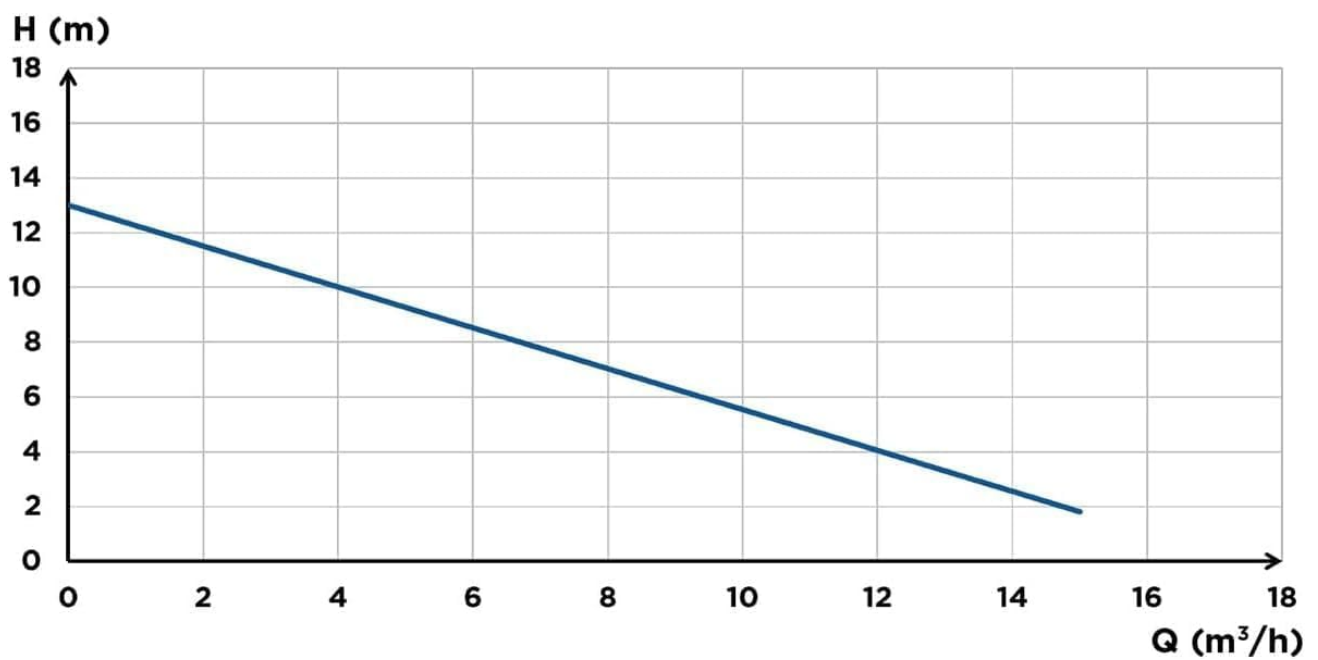


Figure 4.3: Top view of the Sanicubic 1 with the cover removed, showing the accessible motor and macerator for maintenance.



## 5. SETUP AND INSTALLATION

The Sanicubic 1 lifting station is designed for straightforward installation without requiring extensive construction work. It is suitable for floor mounting.

### 5.1. Placement

Choose a location that is level, stable, and provides sufficient space for connections and future maintenance access. The unit should be installed in a dry, frost-free environment.

### 5.2. Plumbing Connections

The Sanicubic 1 features four inlets, allowing connection of various wastewater sources. Its low inlets facilitate connection of WCs at the same level. The discharge outlet is DN 40/50. Ensure all connections are watertight and secured with appropriate clamps.

- Connect the wastewater pipes from WCs, sinks, showers, washing machines, etc., to the available inlets.
- Connect the discharge pipe to the unit's outlet. An integrated non-return valve prevents backflow.
- Ensure proper venting of the unit as per local regulations.

### 5.3. Electrical Connection

The unit operates on 230 Volts and has a power consumption of 1500 Watts. The electrical connection must be performed by a qualified electrician.

- Connect the unit to a dedicated, properly grounded electrical circuit protected by a residual current device (RCD).
- Install the provided alarm box in a visible location. The alarm box connects to the unit via a 5-meter cable and provides acoustic and visual alerts in case of high water level.





Figure 5.1: Example installation of the Sanicubic 1 in a utility room, connected to various plumbing lines.



Figure 5.2: Another example installation of the Sanicubic 1, demonstrating its integration into a basement or garage setting.

## 6. OPERATION

The Sanicubic 1 operates automatically. Once properly installed and connected to power, it will activate when wastewater enters the tank and reaches a predetermined level. The macerator will then grind any solids, and the pump will discharge the wastewater through the outlet pipe.

### 6.1. Automatic Function

The unit is equipped with level sensors that detect the presence of wastewater. When the water level rises, the pump automatically starts. Once the water is discharged and the level drops, the pump will switch off.

### 6.2. Alarm System

The included alarm box provides an acoustic and visual warning if the water level in the tank becomes excessively high, indicating a potential issue such as a blockage or pump malfunction. Upon activation of the alarm, investigate the cause promptly.



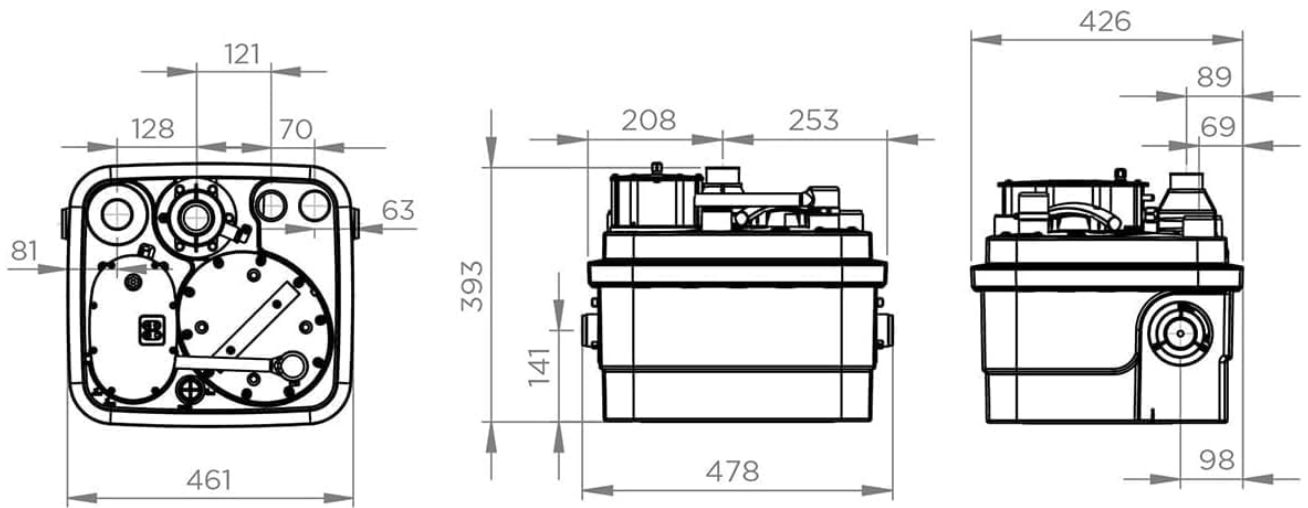


Figure 6.1: Performance curve graph showing the relationship between head (H in meters) and flow rate (Q in m³/h) for the Sanicubic 1. The maximum flow rate is 15 m³/h.

## 7. MAINTENANCE

Regular maintenance ensures the longevity and efficient operation of your Sanicubic 1. The unit features a retractable motor and level sensors for easier servicing.

### 7.1. Routine Inspection

Periodically check the unit for any signs of leaks, unusual noises, or reduced performance. Ensure that the ventilation is not obstructed.

### 7.2. Cleaning

If the unit's performance degrades or unpleasant odors occur, a cleaning may be necessary. Always disconnect power before attempting any cleaning or maintenance.

- Flush the system with clean water.
- For more thorough cleaning, the motor assembly can be accessed by removing the top cover. Refer to Figure 4.3 for visual guidance.
- Use a mild, non-corrosive cleaning agent if necessary. Avoid harsh chemicals that could damage internal components.

### 7.3. Professional Servicing

For complex issues or internal component inspection, it is recommended to contact a qualified service technician or SFA authorized service center.

## 8. TROUBLESHOOTING

This section addresses common issues you might encounter with your Sanicubic 1.

Problem	Possible Cause	Solution
---------	----------------	----------



Problem	Possible Cause	Solution
Unit does not start	No power supply; Circuit breaker tripped; Motor fault	Check power connection; Reset circuit breaker; Contact service
Alarm activates frequently	Blockage in macerator/pump; Inlet/outlet pipe obstruction; Faulty level sensor	Disconnect power, check for blockages; Inspect pipes; Contact service
Unit runs continuously	Faulty level sensor; Continuous water inflow; Non-return valve issue	Check for leaks; Inspect non-return valve; Contact service
Unusual noise/vibration	Foreign object in macerator; Worn bearings	Disconnect power, check for foreign objects; Contact service

If the problem persists after attempting these solutions, please contact SFA customer support or a qualified technician.

## 9. SPECIFICATIONS

Technical data for the SFA Sanicubic 1 lifting station:

Feature	Specification
Model Number	CUBIC1NM
Dimensions (L x W x H)	47.8 x 42.6 x 39.3 cm
Weight	22 Kilograms
Voltage	230 Volts
Wattage	1500 Watts
Material	PP (Polypropylene), PA 12 GF (Glass Fiber Reinforced Polyamid 12)
Max. Wastewater Temperature	70 °C
Max. Flow Rate	15 m³/h
Inlets	4
Discharge Diameter	DN 40/50
Installation Method	Floor Mounting
Included Features	Integrated non-return valve, Alarm box (5m cable)

## 10. WARRANTY AND SUPPORT

The SFA Sanicubic 1 comes with a **two-year warranty** from the date of purchase. This warranty covers

manufacturing defects under normal use conditions.



The product is manufactured in the SFA factory in Hauts-de-France and carries the "Origine France Garantie" quality seal, ensuring its French origin and quality standards.

For warranty claims, technical assistance, or to locate an authorized service center, please contact SFA customer support through their official website or the contact information provided with your purchase documentation.

© 2024 SFA. All rights reserved. Information subject to change without notice.

Related Documents - CUBIC1NM

	<p><a href="#">SFA SANICUBIC 1 VX: Installation Manual and Technical Data</a></p> <p>Detailed installation guide, technical specifications, and troubleshooting information for the SFA SANICUBIC 1 VX wastewater lifting station. Includes diagrams, parts list, and contact details.</p>
	<p><a href="#">SFA Sanidouche/Sanishower/Sanipump Installation and User Manual</a></p> <p>Comprehensive guide for installing and using SFA Sanidouche, Sanishower, and Sanipump wastewater lifting stations. Includes safety, applications, maintenance, troubleshooting, and technical specifications.</p>
	<p><a href="#">SFA Sanidouche, Sanishower, Sanipump Installation and User Manual</a></p> <p>Comprehensive guide for the installation, operation, maintenance, and troubleshooting of SFA Sanidouche, Sanishower, and Sanipump wastewater lifting stations. Covers product features, safety instructions, and technical specifications.</p>
	<p><a href="#">SFA SANIPRO XR Macerator Pump: Installation, Operation &amp; Troubleshooting Guide</a></p> <p>Comprehensive guide for the SFA SANIPRO XR macerator pump, covering installation, applications, electrical connections, commissioning, maintenance, troubleshooting, and warranty. Includes technical specifications and multilingual instructions.</p>

	<p><a href="#">SANIVITE/SANIPUMP 2 V35 Installation Guide - SFA Wastewater Pump</a></p> <p>Comprehensive installation guide for the SFA SANIVITE/SANIPUMP 2 V35 wastewater lifting station. Includes technical specifications, parts list, installation steps, and service contact information.</p>
	<p><a href="#">SFA SANIPACK/SANINSIDE Installation and User Manual</a></p> <p>Comprehensive installation, operation, maintenance, and troubleshooting guide for the SFA SANIPACK/SANINSIDE macerator pump unit, designed for efficient wastewater removal. Includes technical specifications and warranty information.</p>

Documents - SFA – CUBIC1NM



[\[pdf\]](#)

SFA Katalog 2021 A4 v14 indd ivanka sfa sanibroy katalog cz backend sfagroup sites default files 2025 03 |||

PECERPVAC SYSTMY PRO ODPADN VODY PEHLED VROBK 2021 1958 Zalozen SFA a prvn pecerpvac pro WC Akviz ... ecerpvac stanice Sanicubic NM Sanicubic 1 NM Sanicubic 1 WP NM Centrln stanice 11 m Kd vrobku: **CUBIC1NM** IP67 Centrln stanice s jednm motorem pro vesker cern 2 WC a sed odpadn vody z rodinnho ... lang:hr score:19 filesize: 7.93 M page\_count: 44 document date: 2021-07-21