

Manuals+

[Q & A](#) | [Deep Search](#) | [Upload](#)

[manuals.plus](#) /

› [ClosetMaid](#) /

› [ClosetMaid 1311 Rectangular Wood Coffee Table User Manual](#)

ClosetMaid 1311

ClosetMaid 1311 Rectangular Wood Coffee Table User Manual

Model: 1311 | Brand: ClosetMaid

INTRODUCTION

This manual provides essential information for the assembly, use, and maintenance of your ClosetMaid 1311 Rectangular Wood Coffee Table with Storage Shelves. Please read these instructions carefully before beginning assembly and retain them for future reference.



Image: The ClosetMaid 1311 Rectangular Wood Coffee Table in a natural wood finish, featuring two open storage compartments and black metal legs.

IMPORTANT SAFETY INFORMATION

WARNING: This product can expose you to formaldehyde, which is known to the State of California to cause cancer. Avoid inhaling wood dust or use a dust mask or other safeguards for personal protection. For more information go to www.P65Warnings.ca.gov/wood.

- Always assemble the product on a soft, clean surface to prevent scratches.
- Ensure all hardware is securely tightened before use. Periodically check and re-tighten as necessary.
- Do not overload shelves. Distribute weight evenly.
- For safety, it is recommended to secure the product to a wall if a television or heavy items are placed on top, especially in households with children or pets. Wall mounting hardware is included.

PACKAGE CONTENTS

Before assembly, verify that all components listed below are present and undamaged. If any parts are missing or damaged, please contact customer support.

Included Components List

Component	Quantity
Top Shelf	1
Bottom Shelf	1
Dividers	3
Metal Frames (Legs)	2
Cam Locks	6
Cam Posts	6
Screws (for wood panels)	6
Dowels	6
Leg Screws	18
Wall Screws	2
Anchors	2
L Brackets	2
Instruction Sheet	1

SETUP AND ASSEMBLY

Follow these steps carefully to assemble your coffee table. A Phillips head screwdriver and a hammer (for dowels) may be required (not included).

1. **Prepare Components:** Lay out all wood panels and hardware on a clean, soft surface to prevent damage. Identify the Top Shelf, Bottom Shelf, and three Dividers.
2. **Attach Cam Posts and Dowels:** Insert cam posts into the pre-drilled holes on the edges of the dividers and shelves as indicated in the instruction sheet. Gently tap dowels into their respective holes.
3. **Assemble Shelves and Dividers:** Connect the dividers to the top and bottom shelves using the cam locks and screws. Ensure the cam locks are fully engaged by turning them clockwise until snug.
4. **Attach Metal Frames (Legs):** Secure the two metal frames to the underside of the assembled table using the 18 leg screws. Ensure they are aligned properly and tightened firmly.

5. **Optional Wall Anchoring:** For added stability and safety, especially if placing a TV or heavy items, use the provided L brackets, wall screws, and anchors to secure the table to a wall. Choose a suitable location and follow standard wall anchoring procedures.



Image: The assembled coffee table positioned in a living room, showcasing its use for storing books and displaying decorative items.

OPERATING AND USAGE

The ClosetMaid 1311 Coffee Table is designed for versatile use in various home environments.

- **Coffee Table Functionality:** Place in front of a sofa or seating area for convenient access to beverages, snacks, and reading materials.
- **Storage and Display:** Utilize the two open compartments for organizing books, magazines, remote controls, or displaying decorative items.
- **Entertainment Unit:** The sturdy design can support a small television. If used as an entertainment unit, consider securing the table to the wall using the provided anti-tip hardware.
- **Versatile Placement:** Suitable for living rooms, bedrooms, or even home offices as a low-profile storage and display solution.



Image: A detailed view of the coffee table's surface and storage compartments, illustrating its capacity for everyday items such as books, magazines, and decorative accents.

MAINTENANCE AND CARE

To ensure the longevity and appearance of your coffee table, follow these care instructions:

- **Cleaning:** Wipe with a dry cloth to remove dust and light spills. Avoid abrasive cleaners or harsh chemicals, which can damage the laminate finish.
- **Spills:** Promptly wipe up any liquid spills to prevent staining or warping of the wood material.
- **Sunlight Exposure:** Avoid prolonged exposure to direct sunlight, which can cause fading or discoloration over time.
- **Heat Protection:** Use coasters or protective pads under hot items to prevent heat damage to the surface.
- **Hardware Check:** Periodically check all screws and cam locks to ensure they remain tight. Re-tighten as needed to maintain structural integrity.

TROUBLESHOOTING

If you encounter any issues with your coffee table, refer to the following common solutions:

- **Wobbly Table:**
 - Ensure all leg screws and cam locks are fully tightened.
 - Verify that the table is placed on a level surface. Adjust furniture glides if necessary.
- **Missing or Damaged Parts:**
 - Refer to the "Package Contents" section to confirm all parts were received.
 - Contact ClosetMaid customer support for replacement parts.
- **Difficulty Assembling:**

- Review the "Setup and Assembly" section carefully, paying attention to diagrams (if available in the physical manual).
- Ensure components are oriented correctly before tightening hardware.

SPECIFICATIONS

Product Specifications

Feature	Detail
Model Name	1311
Brand	ClosetMaid
Color	Natural
Product Dimensions (D x W x H)	15.75"D x 39.45"W x 15.75"H
Item Weight	27 Pounds
Material Type	Engineered Wood (Laminate Design)
Frame Material Type	Wood, Powder-Coated Steel (Legs)
Number of Shelves	2 (with 3 dividers creating 2 open compartments)
Shelf Space (approx.)	18.66"W x 6.66"H (per compartment)
Recommended Uses	Storage, Display, Coffee Table, TV Stand Alternative

**CLOSETMAID®****Model #1311**

Image: A technical diagram illustrating the overall dimensions of the coffee table, including width (39.45 in.), depth (15.75 in.), and height (15.72 in.).



Image: A detailed diagram highlighting the internal dimensions of the shelf compartments, measuring approximately 18.66 inches in width and 6.66 inches in height.

WARRANTY INFORMATION

ClosetMaid offers a limited warranty for this product:

- The manufacturer will replace any missing or damaged part due to a manufacturer defect for 30 days after purchase.
- Proof of purchase is required for all warranty claims.
- Combining ClosetMaid branded products with third-party components or products will void the ClosetMaid manufacturer's warranty.





CUSTOMER SUPPORT



For assistance with assembly, missing parts, or any other inquiries regarding your ClosetMaid 1311 Coffee Table, please visit the official ClosetMaid website or contact their customer service department. You can find more information and support resources at the[ClosetMaid Store on Amazon](#).



© 2025 ClosetMaid. All rights reserved.
This manual is for informational purposes only. Product specifications are subject to change without notice.

Related Documents - 1311

	<p>ClosetMaid Bookshelf Kit - Adjustable Shelving System</p> <p>Information and care instructions for the ClosetMaid Bookshelf Kit, featuring adjustable shelves. Includes dimensions and usage guidelines for this home organization storage solution.</p>
	<p>ClosetMaid Coffee Table Installation Guide</p> <p>Step-by-step installation instructions for the ClosetMaid Coffee Table, including safety precautions, hardware list, and assembly steps. Features multilingual support.</p>
	<p>R&S ZNB/ZNBT Vector Network Analyzers: Getting Started Guide</p> <p>This guide provides essential information for setting up and operating Rohde & Schwarz R&S ZNB and R&S ZNBT series Vector Network Analyzers. Learn about initial installation, basic controls, and performing fundamental measurements.</p>
	<p>ClosetMaid ShelfTrack Drawer System Installation Guide</p> <p>Step-by-step instructions for installing the ClosetMaid ShelfTrack drawer system, including component identification, assembly steps, and important safety warnings.</p>

	<p>ClosetMaid Shelf Unit Installation Guide (Models 4557, 4596)</p> <p>Step-by-step installation instructions for the ClosetMaid Shelf Unit, including safety precautions, hardware details, parts identification, and assembly steps for models 4557 and 4596. This guide ensures proper assembly and safe use of the storage unit.</p>
	<p>ClosetMaid Suite Symphony Combo Kits Installation Tips - Kit A</p> <p>Installation tips and parts list for ClosetMaid Suite Symphony Combo Kits, Kit A. Includes assembly guidance and general tips for installing closet systems.</p>

Documents - ClosetMaid – 1311



[\[pdf\]](#) Instructions Catalog

Mixed Material Storage Furniture 39 5 in W x 15 8 D Natural Coffee Table with Decorative Shelf

Instructions Assembly ClosetMaid 1311 075381013116 0075381013116 1003427588 a1c29a68 de3f 43d4 8cfd a9f565398e21 images thdstatic catalog Images a1 |||

1311 1315 4962 Entertainment Unit Unit de Divertissement Unidad de Entretenimiento 01-79073-00 1/21 INSTALLATION INSTRUCTIONS INSTRUCCIONES DE INSTALACION INSTRUCTIONS POUR L INSTALLATION 2020 The AMES Companies, Inc. Orlando, FL 32827 1-800-874-0008 www.closetmaid.com SAFETY PRECAUTI...

lang:en score:22 filesize: 1011.97 K page_count: 10 document date: 2022-06-15

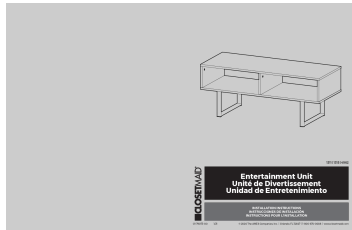


[\[pdf\]](#) User Manual Owner's Manual Instructions

Owner Manual ClosetMaid Industrial Coffee Table w004210093 131100 131500ClosetMaid 1311 1315 4962mcrw7413 3 owner manual 1secure img1 ag wfcdrn dm document 19a713d6 e80c 4ab9 9000 9c772afb3d29 mcrw7413 1 |||

Entertainment Unit Unit de Divertissement Unidad de Entretenimiento INSTALLATION INSTRUCTIONS INSTRUCCIONES DE INSTALACION INSTRUCTIONS POUR L INSTALLATION SAFETY PRECAUTIONS PRECAUCIONES DE SEGURIDAD CONSIGNES DE SCURIT WARNING This unit contains small parts which could be a choking hazard f...

lang:en score:19 filesize: 858.71 K page_count: 10 document date: 2022-06-22



[\[pdf\]](#)

Installation Assembly Coffee Table with Storage ClosetMaid dujm1161 4962ClosetMaid 4962installation
assemblysecure img1 ag wfcdn dm document 53bab2bf 841e 4e67 aa75 27cdb3c1024f installation
assembly |||

01-82668 11/16 Entertainment Unit Unit de Divertissement Unidad de Entretenimiento
1311 / 1315 1 k9 A. Board 2 1pc G. Screw M4X40rnrn 6pc k B. Board C. Board 0 1 pc
 3 pcs H.Dowels M8X40rnrn I.Screw M4X15mm 6pcs 8 pcs l w rnrn D. Metal Frame 2
 pcs 6pc J.Screw M4X35mm 2 pcs s 6pc...

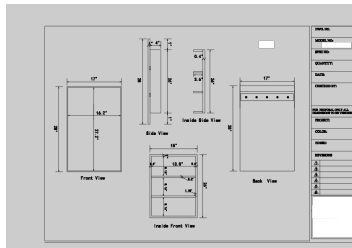
lang:it score:18 filesize: 561.51 K page_count: 2 document date: 2016-11-14

[\[pdf\]](#) Instructions Catalog

01 79073 00 Entertainment Unit indd samantha johnson Mixed Material Storage Furniture 39 5 in W x 15
8 D Gray Coffee Table with Decorative Shelf Instructions Assembly ClosetMaid 1315 075381013154
0075381013154 1003427585 f5743e82 5542 433c af71 3222749fd5ee images thdstatic catalog Images
f5 |||

1311 1315 4962 Entertainment Unit Unit de Divertissement Unidad de
Entretenimiento 01-79073-00 1/21 INSTALLATION INSTRUCTIONS
INSTRUCCIONES DE INSTALACION INSTRUCTIONS POUR L'INSTALLATION 2020
The AMES Companies, Inc. Orlando, FL 32827 1-800-874-0008 www.closetmaid.com
SAFETY PRECAUTIONS

lang:en score:16 filesize: 1.02 M page_count: 6 document date: 2021-03-18



[\[pdf\]](#)

496200 inst 47915010 90338d18 6a18 3b83 8a2d 308e8365743b overstock

01-82668 11/16 Entertainment Unit Unit de Divertissement Unidad de Entretenimiento
1311 / 1315 1 k9 A. Board 2 1pc G. Screw M4X40rnrn 6pc k B. Board C. Board 0 1 pc
 3 pcs H.Dowels M8X40rnrn I.Screw M4X15mm 6pcs 8 pcs l w rnrn D. Metal Frame 2
 pcs 6pc J.Screw M4X35mm 2 pcs s 6pc...

lang:it score:12 filesize: 561.51 K page count: 2 document date: 2016-11-14

[\[pdf\]](#) Specifications

Specifications ClosetMaid Industrial Coffee Table w004210093 131100 131500ClosetMaid 1311 1315
4962specificationssecure img1 ag wfcdr dm document eb99065d f982 4e9c 8b2d 5f85b42f1af0
specifications |||

lang:it score:10 filesize: 535.36 K page_count: 2 document date: 2020-12-23