

[Manuals.plus](#) /

› [SUNUV](#) /

› SUNUV SUN2C 48W UV LED Nail Lamp Instruction Manual

SUNUV SUN2C

SUNUV SUN2C 48W UV LED Nail Lamp Instruction Manual

Model: SUN2C

1. PRODUCT OVERVIEW

The SUNUV SUN2C 48W UV LED Nail Lamp is designed for efficient and safe curing of various gel nail polishes. It combines both UV and LED light technology to ensure quick and thorough drying, providing a professional salon-quality finish at home.

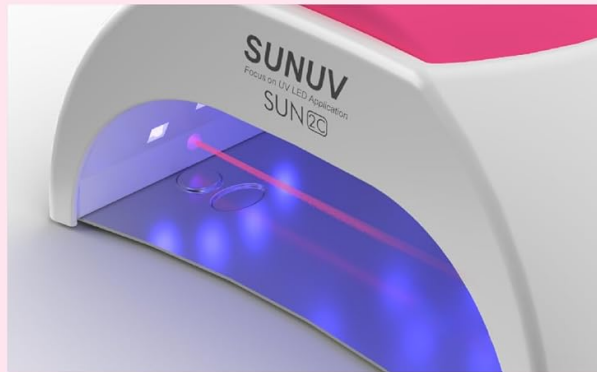


Figure 1.1: The SUNUV SUN2C 48W UV LED Nail Lamp in its compact, dome-shaped design with a pink top panel.

Key Features:

- **Dual Light Source:** Equipped with hybrid UV + LED light beads (365nm UV for quick curing, 405nm LED for gel stabilization and color locking) for comprehensive gel polish compatibility.
- **Smart Sensor Technology:** Automatically turns the lamp on when hands are inserted and off when removed, eliminating the need for manual button presses during use.
- **Multiple Timer Settings:** Features 10s, 30s, 60s, and 90s (low heat mode) timer options to accommodate different gel types and curing requirements.
- **Removable Magnetic Base:** The mirrored and magnetic base can be easily detached, providing ample space for both manicures and pedicures and simplifying cleaning.
- **Eye and Skin Protection:** Emits daylight non-ultraviolet light, designed to be safe for skin and eyes, preventing burning sensations or damage.
- **Portable Design:** Lightweight and compact, making it easy to move and use anywhere in your home.

ALL IN ONE Salon Technology



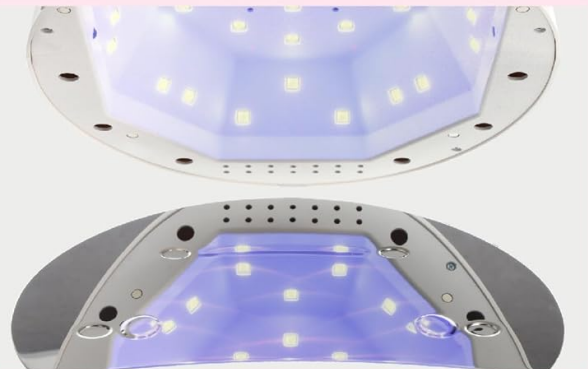
+ **SMART INFRARED SENSOR** *Auto On/Off*



+ **4 TIMER SETTINGS**
for all types of nail art



+ **PILLOW HAND REST**



+ **MIRRORED BASE**
for optimal light reflection

Figure 1.2: Visual representation of the SUNUV SUN2C's key features, including smart infrared sensor, four timer settings, pillow hand rest, and mirrored base.

ULTRA-FAST Curing Time

Hybrid UV + LED Lightbeads

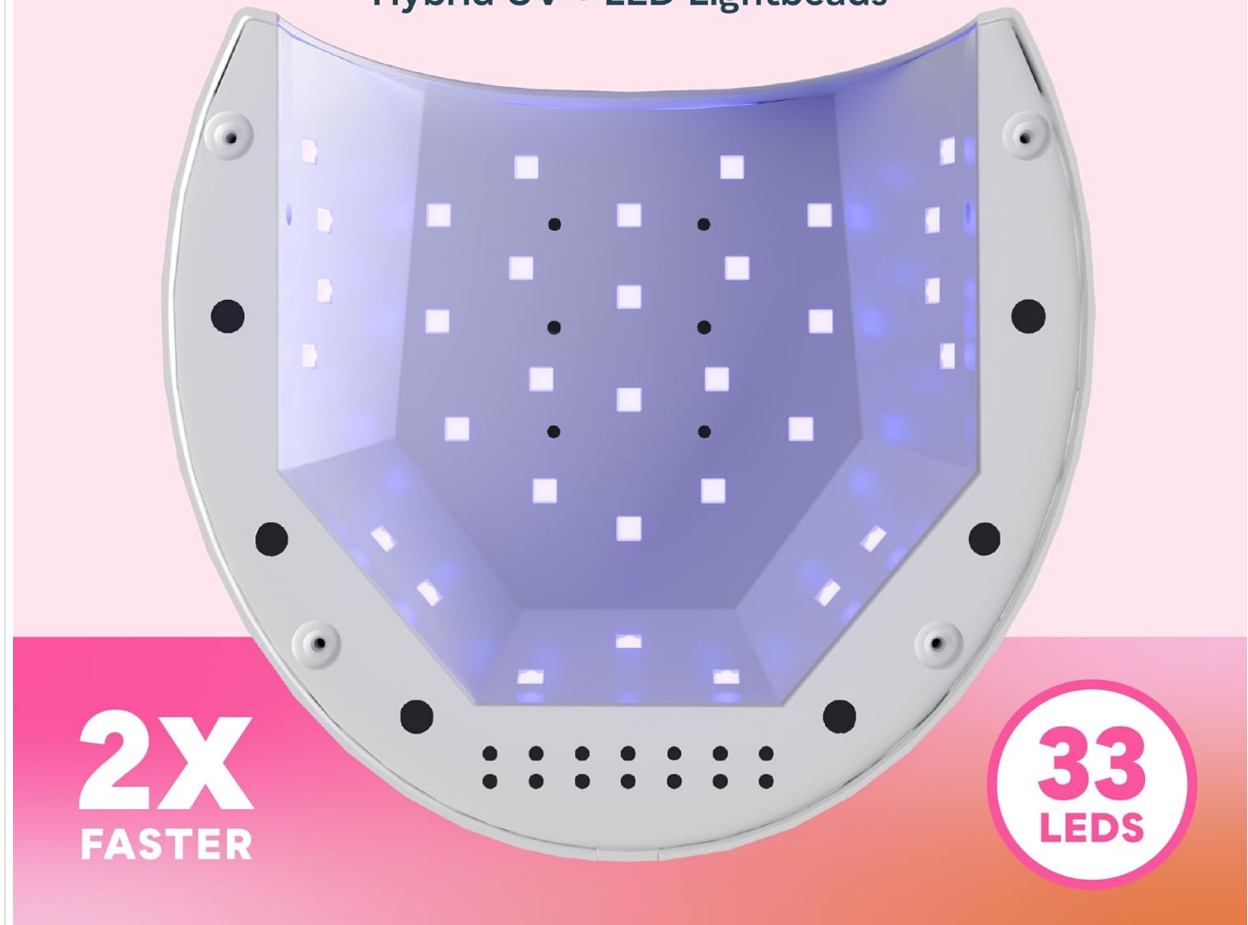


Figure 1.3: Overhead view of the SUNUV SUN2C showing the strategic placement of 33 hybrid UV + LED light beads for ultra-fast and even curing.

2. SAFETY INFORMATION

- Ensure the device is unplugged when not in use or during cleaning.
- Do not expose the device to water or other liquids. Avoid using in damp environments.
- Keep out of reach of children. This is not a toy.
- Do not look directly into the UV/LED lights during operation. While designed to be eye-safe, prolonged direct exposure should be avoided.
- If you experience any discomfort or burning sensation during use, remove your hand immediately.
- Use only with compatible gel nail polishes. This lamp is not designed for regular nail polish.
- Do not attempt to disassemble or repair the device yourself. Contact qualified personnel for service.
- Avoid applying excessively thick layers of gel polish, as this can lead to improper curing or a stinging sensation.

3. SETUP

Before first use, unpack all components and ensure nothing is missing or damaged. The package includes the SUN2C Nail Lamp, a 1.8m Power Adapter, a User Manual, and a Gel Polish Application Manual.

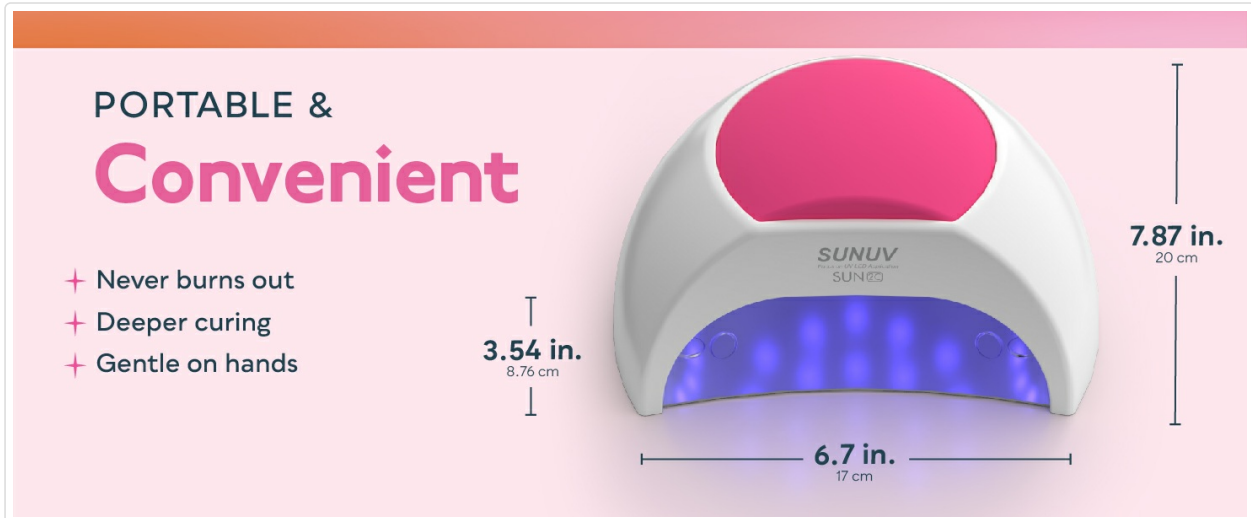


Figure 3.1: Contents of the SUNUV SUN2C package, including the nail lamp, power adapter, and manuals.

1. Remove the nail lamp and power adapter from the packaging.
2. Connect the 1.8m power adapter to the DC input port on the back of the lamp.
3. Plug the power adapter into a suitable electrical outlet (220 volts).
4. Place the lamp on a stable, flat surface.

4. OPERATING INSTRUCTIONS

The SUNUV SUN2C lamp offers flexible operation with both manual timer settings and an automatic smart sensor.

General Application Steps:

1. Clean and prep nails thoroughly. Apply a thin layer of base coat according to its usage instructions, avoiding contact with cuticles or skin.
2. Place hands in the lamp. The smart sensor will automatically turn on the lamp. Alternatively, choose the appropriate timer (10s, 30s, 60s, or 90s) as per your gel polish's requirements.
3. Cure the base coat. Note that curing time varies based on gel polish brand. Ensure your polish is compatible before purchase. For best results, avoid moving your hand too much until curing is completed.
4. Apply a thin layer of color gel polish. Repeat step 2 and 3 for each layer of color.
5. Apply a thin layer of top coat. Cure the top coat fully. Only the top coat can be completely cured and dried.
6. If gel polish is still sticky after curing (which is normal for base and color coats), please use rubbing

alcohol to wipe away the sticky layer.



Figure 4.1: A visual guide to the four easy steps for gel nail application: Prep, Cure, Color, and Shine.

Timer Settings:

The lamp features four preset timer buttons on the back for precise curing:

- **10s:** For quick flash curing or very thin layers.
- **30s:** Standard curing time for many gel polishes.
- **60s:** For thicker layers or darker colors.
- **90s (Low Heat Mode):** Gradually increases power to minimize heat spikes, ideal for sensitive nails or builder gels.

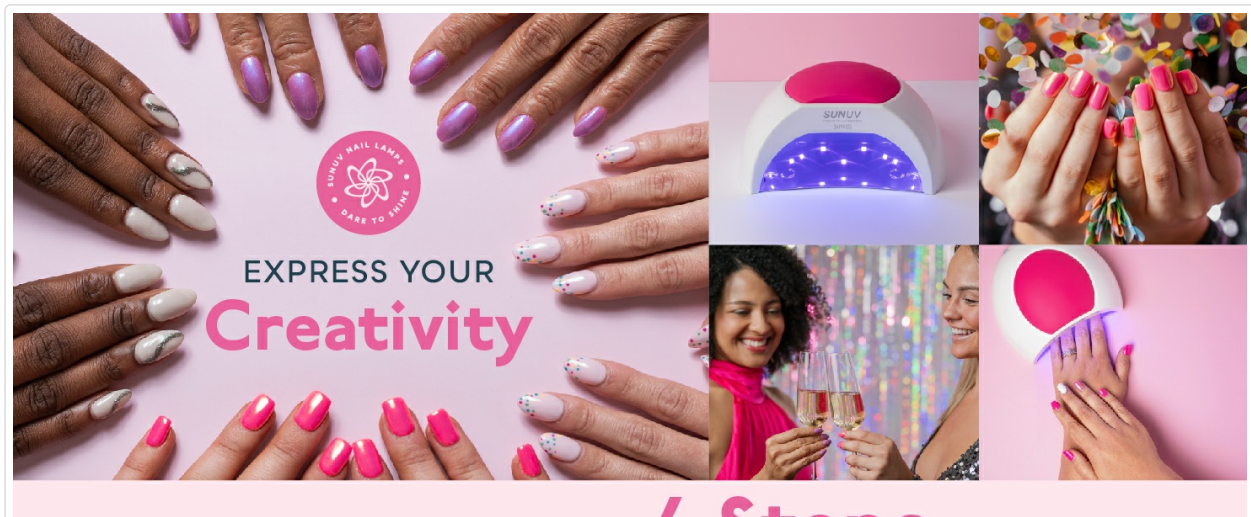


Figure 4.2: Illustration of the four timer settings (10s, 30s, 60s, 90s) available on the SUNUV SUN2C nail lamp.

Smart Infrared Sensor:

For convenience, the lamp is equipped with a smart infrared sensor. Simply slide your hand or foot into the lamp, and the lights will automatically turn on. Remove your hand or foot, and the lights will turn off. This feature is ideal for continuous use without repeatedly pressing buttons.

GEL POLISH APPLICATION FAQs

1. Why Won't My Gel Polish Cure?
 - A. It is completely normal for the base coat and color gel polish to be a little sticky after drying - this helps each layer of polish adhere fully and firmly to the nail.
 - B. Only the top coat will fully cure and dry giving you beautiful, salon quality nails.
 - C. Our SUNUV nail lamps are designed to cure and dry gel polishes only, not regular nail polish. For regular nail polish, please use a fan or air dry.
2. Help! My Gel Polish Is Taking Too Long To Dry.
 - A. Curing time varies for each gel polish brand. Look at the recommended curing time for your specific polish and dry accordingly. We advise applying a thin layer of polish and curing each layer for 30 - 60 seconds. Avoid applying gel polish too thick.
3. How Do I Avoid My Gel Polish From Stinging?
 - A. Make sure you clean up any gel polish that may have gotten on your skin or cuticles and do not apply your gel polish too thick.

Figure 4.3: Diagram illustrating the smart infrared sensor: lights turn on when hands are in, and off when hands are out.

Official Product Videos:

There are no official product videos from the seller available for embedding at this time. Please refer to the text instructions and images provided.

5. MAINTENANCE AND CARE

- **Cleaning:** To clean the lamp, first unplug it from the power source. Use a soft, dry cloth to wipe down the exterior. For the interior, the mirrored base is magnetic and removable, allowing for easy cleaning of any spilled polish or dust.
- **Storage:** Store the lamp in a cool, dry place away from direct sunlight and extreme temperatures.
- **Handling:** Handle the lamp with care to avoid dropping it or subjecting it to strong impacts, which could damage the internal components or LED beads.

WHAT TO KNOW ABOUT GEL CURING

1. It is normal for the base coat and color gel to be a little sticky after drying.
2. Only the top coat will be fully cured and dried - this is normal!
3. When the base coat is a little sticky, this helps other nail polish colors to adhere fully and firmly.
4. Nail polish needs to maintain its brightness, so it won't dry out completely. Only top coat can it be completely cured and dried.
5. Do not apply too thick gel nail polish to avoid stinging.

Figure 5.1: The mirrored and magnetic removable base of the SUNUV SUN2C, highlighting its ease of detachment for cleaning and versatility for manicures and pedicures.

6. TROUBLESHOOTING

Common Gel Polish Application Issues:

- **Why Won't My Gel Polish Cure?**

- It is completely normal for the base coat and color gel to be a little sticky after drying - this helps each layer of polish adhere fully and firmly to the nail.
- Only the top coat will fully cure and dry, giving you beautiful, salon quality nails.
- Our SUNUV nail lamps are designed to cure and dry gel polishes only, not regular nail polish. For regular nail polish, please use a fan or air dry.

- **Help! My Gel Polish Is Taking Too Long To Dry.**

- Curing time varies for each gel polish brand. Look at the recommended curing time for your specific polish and dry accordingly.
- We advise applying a thin layer of polish and curing each layer for 30 - 60 seconds. Avoid applying gel polish too thick.

- **How Do I Avoid My Gel Polish From Stinging?**

- Make sure you clean up any gel polish that may have gotten on your skin or cuticles and do not apply your gel polish too thick.

General Gel Curing Information:

- It is normal for the base coat and color gel to be a little sticky after drying.
- Only the top coat will be fully cured and dried - this is normal!
- When the base coat is a little sticky, this helps other nail polish colors to adhere fully and firmly.
- Nail polish needs to maintain its brightness, so it won't dry out completely. Only top coat can be completely cured and dried.
- Do not apply too thick gel nail polish to avoid stinging.

7. SPECIFICATIONS

Feature	Detail
Brand	SUNUV
Model Number	B01N0BCN9B (SUN2C)
Wattage	48 watts
Bulb Voltage	220 volts
Product Dimensions	7.87 x 7.87 x 3.54 inches
Item Weight	2.3 Pounds
Material	Plastic

Color	A-rose
Country of Origin	China
Date First Available	November 10, 2016

8. WARRANTY AND SUPPORT

For any questions, technical support, or warranty inquiries regarding your SUNUV SUN2C 48W UV LED Nail Lamp, please contact SUNUV customer service directly. Refer to the contact information provided in your product packaging or visit the official SUNUV website for assistance.

Statements regarding dietary supplements have not been evaluated by the FDA and are not intended to diagnose, treat, cure, or prevent any disease or health condition.