

Altec Lansing IMW478s

Altec Lansing IMW478s Mini Life Jacket-3 Bluetooth Speaker User Manual

Model: IMW478s

INTRODUCTION

The Altec Lansing IMW478s Mini Life Jacket-3 is a rugged, portable Bluetooth speaker designed for various environments. It features a durable construction that is waterproof, sandproof, snowproof, dustproof, and shockproof, and it floats on water. This speaker offers up to 16 hours of battery life and includes an onboard power bank for charging other devices. It also supports hands-free calls via its integrated microphone and offers True Universal Wireless Stereo pairing for an enhanced audio experience.



Figure 1: Front view of the Altec Lansing IMW478s Mini Life Jacket-3 Bluetooth Speaker.

PACKAGE CONTENTS

- Altec Lansing IMW478s Mini Life Jacket-3 Bluetooth Speaker
- Mounting Bracket
- USB Charging Cable
- AUX Cable



Figure 2: The Altec Lansing IMW478s Mini Life Jacket-3 Bluetooth Speaker in its retail packaging, showing included accessories.

SETUP

1. Charging the Speaker

Before initial use, fully charge the speaker. Connect the supplied USB charging cable to the DC IN 5V port on the speaker and the other end to a USB power adapter (not included) or a computer's USB port. The charging indicator light will illuminate during charging and turn off when fully charged.

2. Powering On/Off

- To power on: Press and hold the Power button **(P)** located on the top of the speaker until you hear an audible tone.
- To power off: Press and hold the Power button **(P)** again until you hear an audible tone.



Figure 3: Top view of the speaker, highlighting the power and control buttons.

3. Bluetooth Pairing

1. Ensure the speaker is powered on and in pairing mode. The Bluetooth indicator light will flash.
2. On your smartphone or other Bluetooth-enabled device, navigate to the Bluetooth settings.
3. Select "IMW478s" from the list of available devices.
4. Once paired, the Bluetooth indicator light will become solid, and you will hear a confirmation tone.

4. Mounting the Speaker

The speaker includes a mounting bracket for attachment to various surfaces or equipment. Secure the bracket to the speaker and then attach it to your desired location, such as a bicycle handlebar or motorcycle frame.



Figure 4: The speaker shown with the included mounting bracket.



Figure 5: The speaker mounted on a bicycle handlebar, demonstrating its portability.



Figure 6: The speaker mounted on a motorcycle, illustrating another mounting option.

OPERATING INSTRUCTIONS

1. Playing Audio

- **Bluetooth:** Once paired, audio from your device will stream wirelessly to the speaker. Use your device's volume controls or the speaker's volume buttons (+ / -) to adjust the sound level.
- **AUX Input:** Connect one end of the supplied AUX cable to the AUX IN port on the speaker and the other end to the audio output of your device. The speaker will automatically switch to AUX mode.



Figure 7: Rear view of the speaker, showing the USB OUT, AUX IN, and DC IN ports.

2. Speakerphone Functionality

When connected via Bluetooth, the speaker can be used for hands-free calls. When a call comes in, the music will pause. Press the Play/Pause button (▶||) to answer or end a call. The integrated microphone will pick up your voice.

3. Using the Power Bank

The speaker features an onboard power bank. Connect your mobile device's charging cable to the USB OUT 5V port on the speaker to charge your device. This function is available even while the speaker is playing audio.

4. True Universal Wireless Stereo Pairing

For a stereo audio experience, two Altec Lansing IMW478s speakers can be paired together wirelessly. Refer to the specific instructions provided with your product for detailed steps on initiating True Universal Wireless Stereo pairing.

MAINTENANCE

Cleaning

Wipe the speaker with a soft, damp cloth. Do not use harsh chemicals or abrasive cleaners. Ensure all port covers are securely closed before exposing the speaker to water or dust.

Storage

Store the speaker in a cool, dry place away from direct sunlight and extreme temperatures. If storing for an extended period, charge the battery periodically to maintain its lifespan.

TROUBLESHOOTING

- **Speaker will not power on:** Ensure the battery is charged. Connect the speaker to a power source using the USB charging cable.
- **Cannot pair via Bluetooth:**
 - Ensure the speaker is in pairing mode (flashing Bluetooth indicator).
 - Make sure Bluetooth is enabled on your device.
 - Move the speaker closer to your device.
 - Turn off and on both the speaker and your device, then attempt pairing again.
 - Forget the speaker from your device's Bluetooth list and re-pair.
- **No sound:**
 - Check the volume levels on both the speaker and your connected device.
 - Ensure the correct input source is selected (Bluetooth or AUX).
 - If using AUX, ensure the cable is fully inserted and functional.
- **Charging issues (speaker or external device):**
 - Verify the charging cable is securely connected.
 - Try a different USB port or power adapter.
 - Ensure the speaker's battery has sufficient charge to power external devices.

If you encounter persistent issues, please refer to the support section for further assistance.

SPECIFICATIONS

Feature	Detail
---------	--------

Model Number	IMW478-DR
Connectivity Technology	Bluetooth, Auxiliary, USB
Audio Output Mode	Stereo
Speaker Type	Outdoor
Water Resistance Level	Waterproof (IP67 rated)
Power Source	Battery Powered (1 Lithium Polymer battery included)
Average Battery Life	Up to 16 hours
Control Method	Touch
Product Dimensions	6 x 8 x 2 inches
Item Weight	1 pound
Special Features	Travel, Onboard Power Bank, Speakerphone, True Universal Wireless Stereo Pairing

WARRANTY INFORMATION


Altec Lansing products are covered by a limited warranty. Specific warranty terms and conditions, including duration and coverage details, are typically provided with your product at the time of purchase or can be found on the official Altec Lansing website. Please retain your proof of purchase for warranty claims.


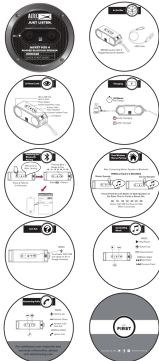
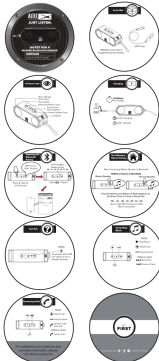
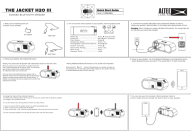

SUPPORT

For additional support, frequently asked questions, or to contact customer service, please visit the official Altec Lansing website. You may also find helpful resources and product registration information there.

Website: www.alteclansing.com

Related Documents - IMW478s

	<p>Altec Lansing Boom Jacket II Rugged Bluetooth Speaker Quick Start Guide</p> <p>Quick start guide for the Altec Lansing Boom Jacket II rugged Bluetooth speaker, covering setup, pairing, features, charging, warranty, and support information.</p>
---	--

	<p>Altec Lansing ATP3 Computer Speaker System User Guide and Setup</p> <p>Comprehensive user guide for the Altec Lansing ATP3 computer speaker system, covering specifications, setup instructions, safety precautions, and control usage.</p>
	<p>Altec Lansing Jacket H2O 4 (IMW449) Rugged Bluetooth Speaker: Quick Start Guide</p> <p>Get started with your Altec Lansing Jacket H2O 4 IMW449 rugged Bluetooth speaker. This guide covers setup, charging, Bluetooth pairing, True Wireless Stereo, music control, and call management.</p>
	<p>Altec Lansing Jacket H2O 4 IMW449 Rugged Bluetooth Speaker Quick Start Guide</p> <p>Quick start guide for the Altec Lansing Jacket H2O 4 Rugged Bluetooth Speaker (IMW449), covering setup, pairing, charging, and basic controls.</p>
	<p>Altec Lansing Jacket H2O III Rugged Bluetooth Speaker Quick Start Guide and Warranty</p> <p>Quick start guide and warranty information for the Altec Lansing Jacket H2O III rugged Bluetooth speaker. Learn about setup, pairing, features like waterproofing and stereo pairing, and understand the one-year limited warranty terms.</p>
	<p>Altec Lansing ACS65i Amplified Speaker System User Guide</p> <p>User guide for the Altec Lansing ACS65i amplified speaker system. This document provides detailed instructions on setup, operation, safety precautions, specifications, and warranty information for multimedia computer audio applications.</p>

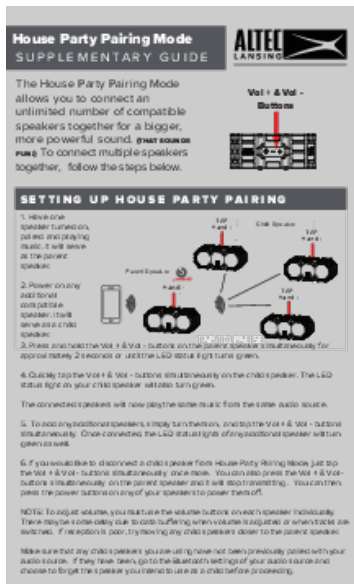
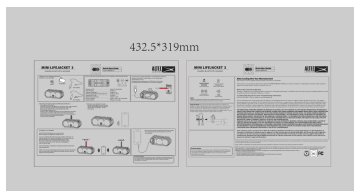
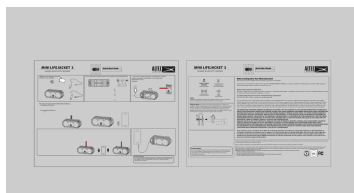
[\[pdf\]](#) Quick Start Guide Frequently Asked Questions Guide

QSG For iMW478 R2a Draft MINI LIFEJACKET 3 Altec Lansing Support sound to confirm pairing and the Bluetooth LED will remain solid Blue Mini LifeJacket Power on your speaker Go Manager of device Search devices select start connecting 2 a look at various buttons view graph below Charging When charging an You can find manuals software FAQ s website Can t what you are looking for Call 1 855 292 4087 access our technical support information Mount Ac Adapter Usb Cables AUX turn first time it automatically goes into mode flash its while searching nd phone IMW478 Quick Start Guide alteclansingsupport 2018 06

MINI LIFEJACKET 3 Mount Ac Adapter Usb Cables AUX Cables 1 BJSJOHB4 JOHMFT QFBLFSX JUI# MVFUPPUI FWJD F 1 BJSJOHZ PVSG JST UEFWJD F When you turn Mini LifeJacket 3 on for the first time, it automatically goes into pairing mode and flash its Bluetooth LED while searching for a Bluetooth source d... lang:en score:46 filesize: 2.1 M page_count: 1 document date: 2018-06-27

[\[pdf\]](#) Quick Start Guide Frequently Asked Questions

QSG For iMW478 R2a Draft Altec Lansing mini lifejacket 3 You can use Stereo Plus Pairing to pair two Mini LifeJacket s without the app With turned on and one already paired your device Technical Support technical support issues please visit our website at alteclansing find manuals software FAQ Can t When you turn for first time it automatically goes into pairing mode flash its Bluetooth LED while searching a source MINI LIFEJACKET Mount Ac Adapter Usb Cables AUX nd what are looking Call 1 855 292 4087 access information phone 843a634b 3ab4 4635 a3ea 78aca4ed6d9a action resource 478 IMW smedia webcollage net rwwfp wc cp 1543340849843 ef3092d8 4334 4dc7 93e7 00f5705c6531 module sakarinternational products 1542227792660 tab 92aeb9c9 6263 4f49 aebf 9c473f90b808 2017 06 NN MINI LIFEJACKET 3 Mount Ac Adapter Usb Cables AUX Cables 1 BJSJOHB4 JOHMFT QFBLFSX JUI# MVFUPPUI FWJD F 1 BJSJOHZ PVSG JST UEFWJD F When you turn Mini LifeJacket 3 on for the first time, it automatically goes into pairing mode and flash its Bluetooth LED while searching for a Bluetooth sour... lang:en score:35 filesize: 10.19 M page_count: 1 document date: 2016-06-27




[\[pdf\]](#) Guide

House Party Guide for IMW479 Altec Lansing Pairing Mode SUPPLEMENTARY GUIDE The allows you to connect an unlimited number of compatible speakers together a bigger If would like disconnect child speaker from just tap the Vol buttons simultaneously once more You can also press IMW478S alteclansing 2017 09 80

House Party Pairing Mode SUPPLEMENTARY GUIDE The House Party Pairing Mode allows you to connect an unlimited number of compatible speakers together for a bigger, more powerful sound. that sounds fun To connect multiple speakers together, follow the steps below. Vol Vol Buttons SETTING UP HO...

lang:en score:29 filesize: 3.49 M page_count: 1 document date: 2017-09-07



SGS-CSTC Standards Technical Services Co., Ltd.

Guangzhou Branch

198 Kezhu Road, Scienteck Park, Guangzhou Economic & Technological Development District, Guangzhou, China 510663

Telephone: +86 (0) 20 82155555

Fax: +86 (0) 20 82075059

Email: ee.guangzhou.sg.com

Report No.: GZEM160600415403

Page: 1 of 42

FCC ID: SP9-00012

1. Cover Page

TEST REPORT

The following sample(s) machine submitted and identified on behalf of the client as:

Application No.:	62260000415403
Applicant:	Kycho Multimedia Ltd.
Manufacturer:	Kycho Multimedia Ltd.
Factory:	1. Shenzhen Golden Time Technology Co., Ltd. 2. Shengzhou Longji Electronics Co., Ltd.
FCC ID:	SP9-00012
Product Description:	BLUETOOTH SPEAKER
Model No.:	MM44B-AB-TA, MM44B-D-TA, MM44B-AB-TA, MM44B-D-TA, MM44B-AB-TA, MM44B-D-TA, MM44B-AB-TA, MM44B-D-TA
Trade Mark:	ALTEC LANSING
Standards:	CFR 47 FCC PART 15 Subpart C, 2015 section 15.247
Date of Receipt:	2016-09-22
Date of Test:	2016-09-23
Date of Issue:	2016-09-23
Test Result:	Pass*

* In the configuration tested, the EUT declared in this report complied with the standards specified above.



[pdf] Declaration of Conformity Test Report

Microsoft Word GZEM160600415403 doc Rita Zhao DSSS Test REport Kysho Multimedia Ltd 00012
BLUETOOTH SPEAKER SP9 SP900012

SGS-CSTC Standards Technical Services Co., Ltd. Guangzhou Branch 198 Kezhu Road, Scienteck Park, Guangzhou Economic Technological Development District, Guangzhou, China 510663 Telephone: 86 0 20 82155555 Fax: 86 0 20 82075059 Email: e e. gua ng zho u sg s.com Report No.: GZEM16060041...
lang:en score:16 filesize: 808.33 K page_count: 42 document date: 2016-09-23



SGS-CSTC Standards Technical Services Co., Ltd.

Guangzhou Branch

198 Kezhu Road, Scienteck Park, Guangzhou Economic & Technological Development District, Guangzhou, China 510663

Telephone: +86 (0) 20 82155555

Fax: +86 (0) 20 82075059

Email: ee.guangzhou.sg.com

Report No.: GZEM160600415402

Page: 1 of 61

FCC ID: SP9-00012

1. Cover Page

TEST REPORT

The following sample(s) machine submitted and identified on behalf of the client as:

Application No.:	62260000415402
Applicant:	Kycho Multimedia Ltd.
Manufacturer:	Kycho Multimedia Ltd.
Factory:	1. Shenzhen Golden Time Technology Co., Ltd. 2. Shengzhou Longji Electronics Co., Ltd.
FCC ID:	SP9-00012
Product Description:	BLUETOOTH SPEAKER
Model No.:	MM44B-AB-TA, MM44B-D-TA, MM44B-AB-TA, MM44B-D-TA, MM44B-AB-TA, MM44B-D-TA, MM44B-AB-TA, MM44B-D-TA
Trade Mark:	ALTEC LANSING
Standards:	CFR 47 FCC PART 15 Subpart C, 2015 section 15.247
Date of Receipt:	2016-09-22
Date of Test:	2016-09-23 to 2016-07-09
Date of Issue:	2016-09-23
Test Result:	Pass*

* In the configuration tested, the EUT declared in this report complied with the standards specified above.



[pdf] Declaration of Conformity Test Report

Microsoft Word GZEM160600415402 doc Rita Zhao FHSS Test Report Kysho Multimedia Ltd 00012
BLUETOOTH SPEAKER SP9 SP900012

SGS-CSTC Standards Technical Services Co., Ltd. Guangzhou Branch 198 Kezhu Road, Scienteck Park, Guangzhou Economic Technological Development District, Guangzhou, China 510663 Telephone: 86 0 20 82155555 Fax: 86 0 20 82075059 Email : ee. guan gzh ou sg s.co m Report No.: GZEM160600...
lang:en score:14 filesize: 1.01 M page_count: 61 document date: 2016-09-23