

3M Littmann 6177

3M Littmann Cardiology IV Diagnostic Stethoscope

INSTRUCTION MANUAL

[Introduction](#) [Setup](#) [Operating](#) [Maintenance](#) [Troubleshooting](#) [Specifications](#)
[Warranty & Support](#)

Introduction

The 3M Littmann Cardiology IV Stethoscope is engineered for medical professionals who demand superior acoustic performance and exceptional versatility. This instrument features an innovative design with a single-piece tunable diaphragm on both sides of the chestpiece, allowing for the detection of both high and low-frequency sounds by simply adjusting pressure.

Key features include:

- **Outstanding Acoustics:** Enhanced audibility of high-frequency sounds with firm pressure.
- **Tunable Diaphragm:** Seamlessly switch between high and low-frequency sounds by varying pressure on the chestpiece.
- **Dual-Lumen Tubing:** Two sound paths within a single tube eliminate the rubbing noise common with traditional double tubes.
- **Durable Tubing:** Next-generation tubing is designed for longevity, stain resistance, and is free from natural rubber latex or phthalate plasticizers.
- **Adjustable Headset:** Easily customized for individual fit and comfort, with ear tubes angled to align with ear canals.



Image: The 3M Littmann Cardiology IV Diagnostic Stethoscope in black with a mirror-finish chestpiece. This image shows the overall design, including the headset, tubing, and chestpiece.

Setup and Initial Inspection

Upon receiving your 3M Littmann Cardiology IV Stethoscope, please perform the following steps to ensure proper setup and functionality:

1. **Unboxing:** Carefully remove the stethoscope from its packaging. Inspect all components for any signs of damage during transit.
2. **Headset Adjustment:** The headset is designed to be adjusted for a comfortable and acoustically sealed fit. Hold the eartubes in front of you with the eartips pointing away. Pull the eartubes apart to adjust the tension. The eartips should fit snugly into your ear canals.
3. **Eartip Check:** Ensure the soft-sealing eartips are securely attached to the eartubes. Replacement eartips are included for different comfort preferences.
4. **Chestpiece Orientation:** The Cardiology IV features a double-sided chestpiece. Rotate the chestpiece to select either the adult or pediatric side. A slight click indicates the active side.



3M
Littmann[®]
Stethoscopes

Cardiology IV[™]

Designed for hard to hear sounds

Image: A front view of the 3M Littmann Cardiology IV Stethoscope, highlighting the headset and chestpiece. This view helps in understanding how to hold and adjust the stethoscope for initial setup.

Operating Instructions

The 3M Littmann Cardiology IV Stethoscope is designed for precise auscultation. Follow these guidelines for optimal performance:

1. **Selecting the Diaphragm:**

The chestpiece is double-sided, featuring a large side for adult patients and a smaller side for pediatric or thin patients, or for navigating around bandages. To activate a side, hold the stem and rotate the chestpiece until you feel a click. The active side will be open to the acoustic pathway.



3M
Littmann®
Stethoscopes

Cardiology IV™

Image: A diagram illustrating the double-sided chestpiece of the Littmann Cardiology IV, showing how it rotates to switch between the adult (1.7 inch/4.3 cm) and pediatric (1.4 inch/3.4 cm) sides.

2. Tunable Diaphragm Technology:

The tunable diaphragm allows you to hear both low and high-frequency sounds without turning over the chestpiece.

- **Low-Frequency Sounds:** Apply light pressure to the chestpiece. This allows the diaphragm to flex, enabling the detection of low-frequency sounds like heart murmurs.
- **High-Frequency Sounds:** Apply firm pressure to the chestpiece. This restricts the diaphragm's movement, allowing you to hear higher-frequency sounds such as lung sounds.



Hear
heart sounds
below
120Hz*

*More reliably and consistently hear heart sounds at lower frequencies (below 120Hz) like Korotkoff sounds, Mitral Stenosis and S3 and S4 Gallops, when compared to the next leading stethoscope, using recorded normal heart sounds with diaphragm.

Image: A medical professional using the Littmann Cardiology IV Stethoscope on a patient's chest, demonstrating typical usage for cardiac auscultation.

3. **Auscultation Techniques:**

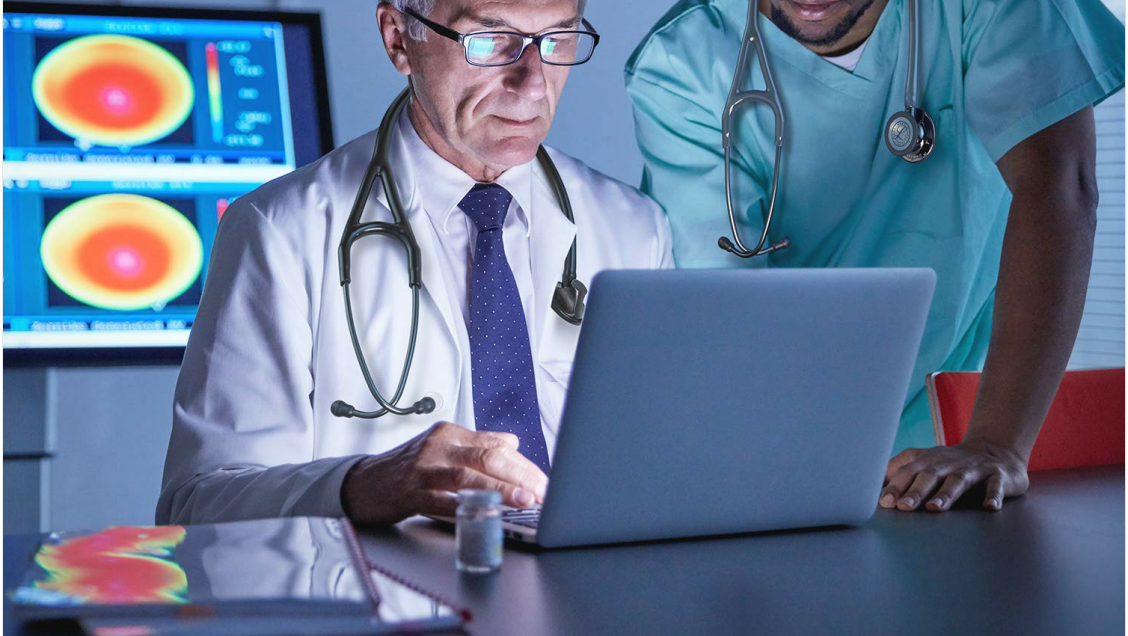
Position the chestpiece firmly on the patient's skin, ensuring no clothing interferes with sound transmission. Listen for heart, lung, and bowel sounds as required by your clinical assessment.

3M

Littmann®

Stethoscopes

Cardiology IV™



Diagnose in critical care environments

Image: A medical professional using the Littmann Cardiology IV Stethoscope on a patient's back, illustrating its use for lung auscultation.

Maintenance and Care

Proper care and maintenance will extend the life and performance of your 3M Littmann Cardiology IV Stethoscope:

- **Cleaning:**

The stethoscope can be cleaned with a 70% isopropyl alcohol solution or a 2% bleach solution. Wipe all parts of the stethoscope thoroughly. Do not immerse the stethoscope in any liquid or subject it to sterilization processes.

- **Eartip Cleaning/Replacement:**

Eartips should be removed from the eartubes for thorough cleaning. Inspect them regularly for debris or damage and replace if necessary to maintain acoustic seal and hygiene.

- **Tubing Care:**

Avoid extreme heat, cold, solvents, and oils, as these can damage the tubing. Store your stethoscope away from direct sunlight and sharp objects. The dual-lumen tubing is designed to resist stains and last longer.

3M
Littmann®
Stethoscopes

Cardiology IV™



Pediatric side 1.4"/3.4cm • Adult side 1.7"/4.3cm

Image: A close-up view of the stethoscope tubing, illustrating its durable and stain-resistant material.

- **Diaphragm and Rim:**

The tunable diaphragm and non-chill rim can be removed for cleaning. After cleaning, ensure they are securely reattached to the chestpiece.

Troubleshooting

If you experience issues with your 3M Littmann Cardiology IV Stethoscope, consider the following common solutions:

Problem	Possible Cause	Solution
---------	----------------	----------

Problem	Possible Cause	Solution
Poor Sound Quality or No Sound	<ul style="list-style-type: none"> • Improper eartip fit • Obstruction in eartubes • Chestpiece not rotated to active side • Loose diaphragm or rim • Damaged tubing 	<ul style="list-style-type: none"> • Adjust headset tension and eartip fit. • Remove eartips and check for debris in eartubes. • Rotate chestpiece until it clicks into place. • Ensure diaphragm and non-chill rim are securely attached. • Inspect tubing for cracks or hardening; replace if damaged.
Discomfort from Eartips	<ul style="list-style-type: none"> • Incorrect eartip size • Headset tension too high 	<ul style="list-style-type: none"> • Try a different size of eartips (soft-sealing eartips are provided). • Gently pull eartubes apart to reduce tension.
Chestpiece Leaking Oily Liquid	<ul style="list-style-type: none"> • Manufacturing residue or lubricant • Damage to chestpiece seal 	<ul style="list-style-type: none"> • Wipe thoroughly with a cleaning solution. If persistent or significant, contact customer support.

Product Specifications

Feature	Detail
Brand	3M Littmann
Model Number	6177
Color	Black
Chestpiece Finish	Mirror-Finish
Item Weight	481 g
Product Dimensions (LxWxH)	68.58 x 2.54 x 2.54 cm (27 x 1 x 1 inches)
Included Components	Stethoscope, additional eartips, non-chill rim
Tubing Type	Dual-Lumen
Diaphragm Type	Tunable, Single-piece
Country of Origin	USA



CORE Digital Stethoscope

Up to 40x amplification (at peak frequency vs. analog mode)

Acoustic performance level 10+



Cardiology IV Diagnostic Stethoscope

Useful in critical care and challenging environments

Acoustic performance level 9



Classic III Monitoring Stethoscope

Go-to stethoscope for medical offices, OB/GYNs, ambulatory clinics, or urgent care

Acoustic performance level 8



Lightweight II S.E. Stethoscope

The basics without compromise

Acoustic performance level 6

Image: A visual comparison chart showing different Littmann stethoscope models and their acoustic performance levels, with the Cardiology IV highlighted.

Warranty and Support

The 3M Littmann Cardiology IV Diagnostic Stethoscope comes with a **Seven-Year Warranty**, providing peace of mind regarding its quality and durability. This warranty covers defects in material and workmanship under normal use.

For warranty claims, technical support, or any product-related inquiries, please contact 3M Littmann Customer Service. Keep your purchase receipt and the product's serial number (located on the chestpiece) readily available when contacting support.

For more information and to register your product, please visit the official 3M Littmann website or refer to the documentation included in your product packaging.

Visit the **3M Littmann**
Store

© 2025 3M Littmann. All rights reserved.

This manual is for informational purposes only. Always refer to the latest official documentation and consult with qualified professionals for medical advice.