

Ghost Controls TDS2XP

Ghost Controls TDS2XP Solar Dual Swing Gate Opener Instruction Manual

Model: TDS2XP | Brand: Ghost Controls

INTRODUCTION

This manual provides comprehensive instructions for the installation, operation, and maintenance of your Ghost Controls TDS2XP Heavy-Duty Solar Automatic Gate Opener Kit. This system is designed for dual swing gates, offering automated access control for residential driveways. Please read this manual thoroughly before beginning installation or operation to ensure safe and efficient use.

SAFETY INFORMATION

WARNING: Automatic gate openers can cause serious injury or death if not installed and operated correctly. Always follow all safety instructions.

- Keep hands and feet clear of the gate and gate opener at all times.
- Do not allow children to play on or near the gate.
- Ensure all safety devices (e.g., photo eyes, warning signs) are properly installed and functioning.
- Disconnect power before performing any maintenance or service.
- Only use the gate opener for its intended purpose as described in this manual.



Image: A warning label indicating potential hazards associated with automatic gate openers, emphasizing the importance of keeping clear of the gate.

PACKAGE CONTENTS

The Ghost Controls TDS2XP kit includes the following components:

- Two (2) Gate Opener Arms
- One (1) 10 Watt Monocrystalline Solar Panel
- One (1) Control Box with Control Panel
- Two (2) 3-Button Remote Transmitters
- Two (2) Tube Gate Brackets
- Mounting Hardware
- Battery Harness
- Instruction Manual (this document)

Note: A 12V deep cycle marine type battery is REQUIRED and NOT included in this kit.



SETUP AND INSTALLATION

Installation of the Ghost Controls TDS2XP gate opener requires commonly available tools. No welding or high-voltage electrical work is required.

1. Gate Compatibility

This system is designed for dual swing gates up to 900 pounds or up to 12 feet in length per gate leaf (maximum gate opening of 24 feet). It is suitable for decorative, chain link, tube, plantation, and wood gates. It is **not recommended for solid panel gates** due to wind resistance.

Max	5'	6'	8'	10'	12'	14'	16'	18'	20'								
1000 lbs.	<div>Maximum Gate Length and Weight</div>																
900 lbs.										TDS2							
800 lbs.										↓	TDS2						
700 lbs.										↓	↓	TDS2					
600 lbs.										↓	↓	↓	TDS2				
500 lbs.										↓	↓	↓	↓	TDS2			
400 lbs.										↓	↓	↓	↓	↓	TDS2		
350 lbs.										↓	↓	↓	↓	↓	↓	TDS2	
325 lbs.										↓	↓	↓	↓	↓	↓	↓	TDS2
300 lbs.										↓	↓	↓	↓	↓	↓	↓	↓

Image: A chart illustrating the maximum gate length and weight capacities for various Ghost Controls gate opener models, including the TDS2XP.

2. Mounting the Control Box and Arms

Mount the control box and gate opener arms securely to your gate posts. Ensure the mounting points are stable and can support the weight and forces exerted by the gate opener. For tube gates, utilize the provided tube gate brackets. If your gate opens outside of your property, you may need to add push-to-open brackets (sold separately).



Image: A Ghost Controls gate opener arm and control box installed on a wooden gate post, demonstrating typical mounting configuration.



Image: A close-up view of the tube gate brackets, showing how they attach to a tubular gate frame for the opener arm.

3. Solar Panel Installation

The 10-watt monocrystalline solar panel should be mounted in a location that receives maximum direct sunlight throughout the day. Orient the panel to face south (in the Northern Hemisphere) for optimal charging. You can add up to 30 watts of solar panels to your system for increased charging capacity.

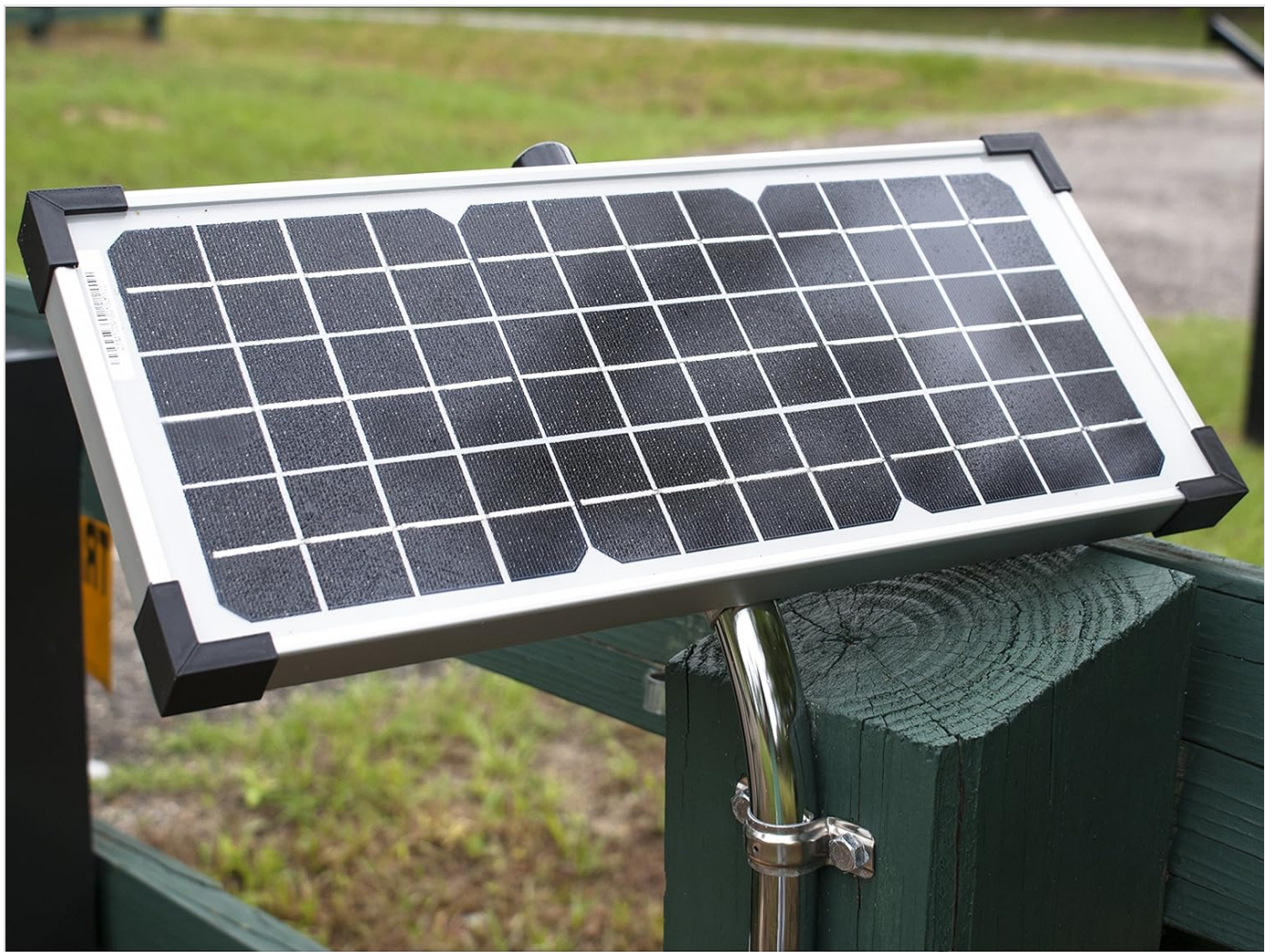
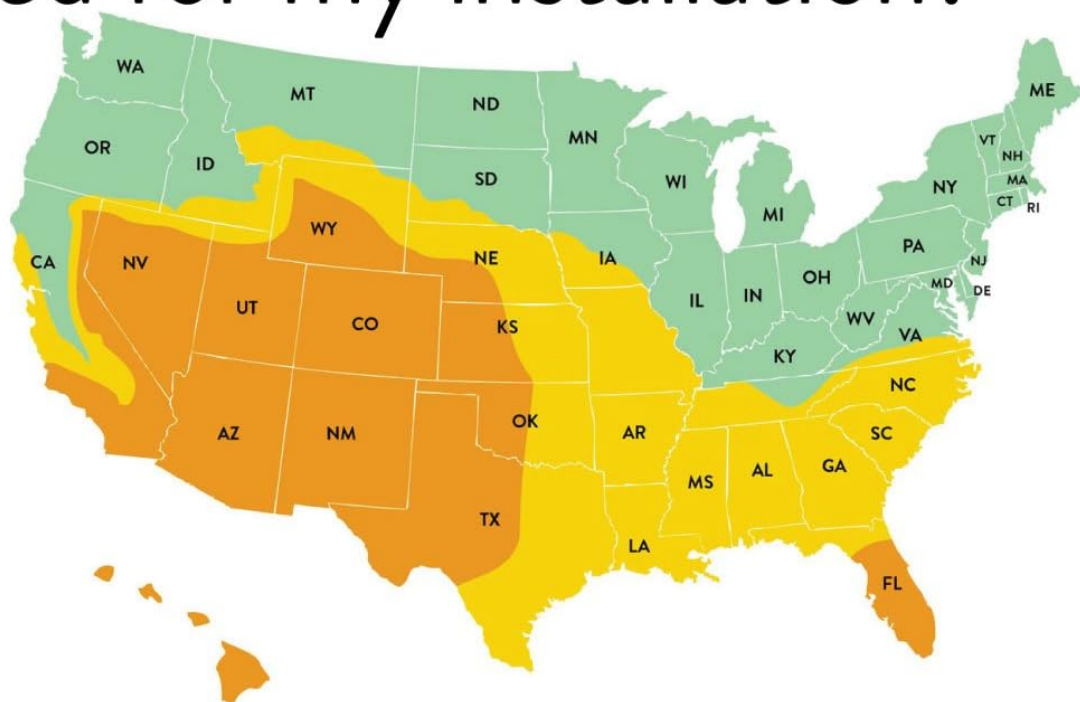


Image: A 10-watt monocrystalline solar panel from Ghost Controls, mounted on a post, designed to charge the gate opener's battery.

How many Solar Panels do I need for my installation?



©2016 Ghost Controls

ZONE 3 ZONE 2 ZONE 1

NUMBER OF 10W PANELS	ZONE 1	ZONE 2	ZONE 3
1=10W SINGLE	8 cycles	16 cycles	24 cycles
1=10W DUAL	4 cycles	8 cycles	12 cycles
2=20W SINGLE	14 cycles	28 cycles	38 cycles
2=20W DUAL	7 cycles	14 cycles	19 cycles
3=30W SINGLE	20 cycles	30 cycles	40 cycles
3=30W DUAL	10 cycles	15 cycles	20 cycles



Image: A map of the United States divided into solar zones, with a table recommending the number of gate cycles per day based on the number of 10W solar panels installed in each zone.

4. Battery Connection

Connect your 12V deep cycle marine type battery (not included) to the control box using the provided battery harness. Ensure correct polarity. The solar panel will keep this battery charged.

OPERATING INSTRUCTIONS

1. Remote Control Operation

The kit includes two 3-button remote transmitters. Press the designated button on the remote to open or close the gate. The remote control range is up to 1,000 feet.



Image: Two black 3-button remote transmitters for Ghost Controls gate openers, featuring distinct buttons for gate operation.

2. Smart Gate Opener Compatibility

The TDS2XP is compatible with third-party devices, allowing control of your automatic gate opener using a smartphone app (sold separately). This feature provides enhanced convenience and monitoring capabilities.

3. Safety Features

The system incorporates "Safety Force" technology and soft start/stop functionality to ensure safe operation and reduce wear on the gate and opener.

MAINTENANCE

Regular maintenance ensures the longevity and optimal performance of your gate opener.

- **Monthly:** Inspect the gate and opener for any signs of wear, damage, or loose connections. Ensure the gate moves freely without obstruction.
- **Quarterly:** Check the battery voltage and terminals for corrosion. Clean the solar panel surface to ensure maximum sunlight absorption.
- **Annually:** Lubricate moving parts of the gate hinges and opener arms as recommended by the manufacturer.
- Keep the area around the gate clear of debris, vegetation, and anything that could obstruct the gate's movement.

TROUBLESHOOTING

If you encounter issues with your Ghost Controls gate opener, refer to the following common troubleshooting steps:

Problem	Possible Cause	Solution
Gate does not open/close	No power to the unit, dead battery, remote not programmed, obstruction.	Check battery connections and charge. Reprogram remote. Clear any obstructions.
Gate opens partially or reverses	Obstruction detected, gate binding, limit settings incorrect.	Remove obstruction. Check gate hinges for binding. Re-adjust limit settings.
Remote range is poor	Battery in remote is low, interference, antenna issue.	Replace remote battery. Check for sources of interference. Ensure control box antenna is unobstructed.

Problem	Possible Cause	Solution
Solar panel not charging battery	Panel dirty, insufficient sunlight, faulty wiring, charge controller issue.	Clean solar panel. Ensure panel is optimally oriented. Check all wiring connections.

For more detailed troubleshooting or issues not listed here, please refer to the comprehensive troubleshooting guide available on the Ghost Controls website or contact customer support.

SPECIFICATIONS

- Model:** TDS2XP
- Gate Type:** Dual Swing Gates
- Max Gate Length (per leaf):** Up to 12 feet
- Max Gate Weight (per leaf):** Up to 900 pounds
- Power Source:** Battery-Powered (12V deep cycle marine type battery required, not included)
- Solar Panel:** 10 Watt Monocrystalline (included)
- Remote Range:** Up to 1,000 feet
- Voltage:** 12 Volts
- Item Weight:** Approximately 46.4 pounds (kit)
- Product Dimensions:** 41 x 8.5 x 10.5 inches (packaging/overall kit)
- Certification:** UL325
- Installation Method:** Do-It-Yourself

WARRANTY INFORMATION

Ghost Controls provides the following warranty for the TDS2XP kit:

- **Parts and Accessories:** 18 Months
- **Motor and Gear Assembly of Arm:** Lifetime

Please retain your proof of purchase for warranty claims. The warranty covers defects in materials and workmanship under normal use. It does not cover damage due to improper installation, misuse, abuse, or acts of nature.

CUSTOMER SUPPORT


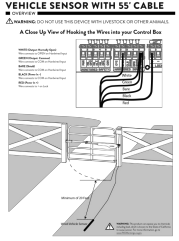
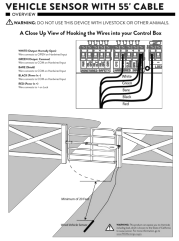

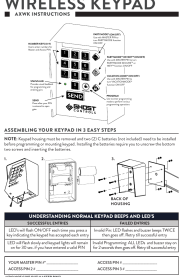
For technical assistance, troubleshooting, or warranty inquiries, please contact Ghost Controls customer support.

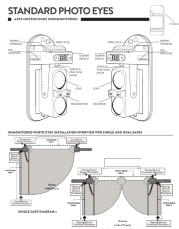
- Website:** www.ghostcontrols.com
- Phone:** Refer to the Ghost Controls website for current contact numbers.

Additional resources, including installation videos and FAQs, may be available on the official Ghost Controls website.



Related Documents - TDS2XP

	<p>Ghost Controls HDP2 Gate Opener Installation and Owners Manual</p> <p>Comprehensive guide for installing and operating the Ghost Controls HDP2 Dual Kit automatic gate opener system, including safety, setup, and troubleshooting.</p>
	<p>Ghost Controls Vehicle Sensor with 55' Cable Installation Guide</p> <p>Comprehensive installation guide for the Ghost Controls Vehicle Sensor with 55' Cable (AXXV-55). Includes wiring instructions, placement tips, safety warnings, and warranty information for automatic gate opener systems.</p>
	<p>Ghost Controls Vehicle Sensor Installation and Operation Guide</p> <p>Comprehensive guide for installing and operating the Ghost Controls Vehicle Sensor with a 55' cable, including wiring instructions, placement tips, and warranty information.</p>
	<p>Ghost Controls DS1U(M) Automatic Gate Opener: Installation and Owners Manual</p> <p>This comprehensive installation and owners manual for the Ghost Controls DS1U(M) Automatic Gate Opener system guides users through proper setup, operation, and safety. Covers pull-to-open and push-to-open installations, power options (solar, AC), troubleshooting, and accessory integration for residential gate automation.</p>
	<p>GHOST CONTROLS AXWK Wireless Keypad: Instructions and Programming Guide</p> <p>Comprehensive instructions for the GHOST CONTROLS AXWK Wireless Keypad, covering assembly, PIN setup, remote programming, special features, and troubleshooting.</p>



Ghost Controls AXPS Standard Photo Eyes Installation and Wiring Guide

Comprehensive guide for installing and wiring Ghost Controls AXPS Standard Photo Eyes for gate openers. Covers single and dual gate setups, connection diagrams, DIP switch configuration, and mounting best practices.

Documents - Ghost Controls – TDS2XP



[\[pdf\]](#) User Manual Owner's Manual Quick Start Guide Warranty

TDS2 Manuals and Quick Start Guides Manual v 1662744899 cdn shopify s files 1 0255 2332 2989 |||
TDS2 GATE OPENER INSTALLATION AND OWNERS MANUAL FOR DUAL GATE OPENINGS OF UP TO 24 FEET This kit re ...

Address:_____ Items

Purchased: TSS1 TSS1XP TDS2 **TDS2XP** Where did you buy your gate opener system please include a copy of your receipt Type of ...

lang:en score:39 filesize: 11.78 M page_count: 68 document date: 2022-09-09



[\[pdf\]](#) User Manual Owner's Manual Quick Start Guide Warranty

TSS1 Manuals and Quick Start Guides manual v 1662741525 cdn shopify s files 1 0255 2332 2989 |||
TSS1 GATE OPENER INSTALLATION AND OWNERS MANUAL This kit requires a 12V Deep Cycle Marine Battery o ...

Address:_____ Items

Purchased: TSS1 TSS1XP TDS2 **TDS2XP** Where did you buy your gate opener system please include a copy of your receipt Type of ...

lang:en score:36 filesize: 11.75 M page_count: 68 document date: 2022-09-09



[\[pdf\]](#) User Manual Owner's Manual Quick Start Guide Warranty

TSS1 Manuals and Quick Start Guides manual 2022 v 1662575602 cdn shopify s files 1 0255 2332 2989 |||

TSS1 GATE OPENER INSTALLATION AND OWNERS MANUAL This kit requires a 12V Deep Cycle Marine Battery o ...

Address:_____ Items

Purchased: TSS1 TSS1XP TDS2 **TDS2XP** Where did you buy your gate opener system please include a copy of your receipt Type of ...

lang:en score:36 filesize: 12.48 M page_count: 68 document date: 2022-09-07



[\[pdf\]](#) User Manual Owner's Manual Quick Start Guide Specifications Warranty

TDS2 Manuals and Quick Start Guides 2021 Manual bw v 1614873308 cdn shopify s files 1 0255 2332 2989 |||

TDS2 GATE OPENER INSTALLATION AND OWNERS MANUAL This kit is for dual gates with a gate opening of up ... ing 1st Opener Arm: Control Box AC Transformer in TDS2 Kit: 3 Button Remote: OR 10W Solar Panel **TDS2XP** Kit: T O O L S N E E D E D 17 INCLUDED PARTS IN KIT PARTS FOR 2ND OPERATOR Post and Rear ... lang:en score:36 filesize: 10.85 M page_count: 68 document date: 2021-03-04



[\[pdf\]](#) User Manual Owner's Manual Quick Start Guide Warranty

SINGLE AND DUAL GATE OPENER KITS Manuals and Quick Start Guides MANUAL 2023 web v 1690212864 cdn shopify s files 1 0255 2332 2989 |||

SINGLE AND DUAL GATE OPENER INSTALLATION AND OWNERS MANUAL

Some kits will come with a battery box an ...

ress:_____ It ems Purchased: TSS1 TSS1XP

DTP1 DS1U DS1UXP TDS2 **TDS2XP** DEP2 DD2U DD2UXP Where did you buy your gate opener system please include a copy of you...

lang:en score:34 filesize: 9.91 M page_count: 68 document date: 2023-07-24



[\[pdf\]](#) User Manual Owner's Manual Warranty Catalog

SINGLE AND DUALBUILD A KIT Page 5 WARRANTY ©Ghost Controls 2023 PROTECT YOUR INVESTMENT The monocrystalline 10W solar panels are a great solution for anyone who is 1f39ebdf 7cba 4cfa 8173 fdb6d61430a5images thdstatic catalog Images 1f 1f39ebdf fdb6d61430a5 |||

SINGLE AND DUAL GATE OPENER INSTALLATION AND OWNERS MANUAL

Some kits will come with a battery box an ...

ress:_____ It ems Purchased: TSS1 TSS1XP

DTP1 DS1U DS1UXP TDS2 **TDS2XP** DEP2 DD2U DD2UXP Where did you buy your gate opener system please include a copy of you...

lang:en score:16 filesize: 9.91 M page_count: 68 document date: 2023-07-24