

manuals.plus /

> [Speedlink](#) /> [Trailblazer Racing Wheel User Manual](#)

## Speedlink SL-450500-BK

## Trailblazer Racing Wheel User Manual

Model: SL-450500-BK | Brand: Speedlink

## 1. IMPORTANT SAFETY INSTRUCTIONS

Please read the following instructions carefully to ensure safe operation and prevent damage to the product or injury.

- Only use this device as indicated in the user guide. Do not open or repair it.
- Do not expose the device to liquids, heat, or cold.
- Only clean the device with a dry cloth.
- Keep the device and all loose parts away from children, pets, and unauthorized persons.
- Only use the device with the appropriate provided USB charging cable and with a USB-A port.
- Disconnect the charging cable from the device if it will not be used for a long time. When disconnecting the cable, do not pull on the plug.
- Do not coil the cables in a way that might cause damage.
- Do not insert any foreign objects into the openings of the device.
- If the device is damaged in any way or gets too hot, stop using it immediately.

### SAFETY INSTRUCTIONS

#### IMPORTANT SAFETY INSTRUCTIONS

Please note that the failure to observe these instructions can cause product damage, explosion, fire and/or electric shocks!

- Only use this device as indicated in the user guide. Do not open or repair it.
- Do not expose the device to liquids, heat or cold.
- Do not use the device in a damp environment. Clean the device with a dry cloth.
- Keep the device and all loose parts away from children, pets and unauthorized persons.
- Only use the device with the appropriate provided USB charging cable and with a USB-A port.
- Disconnect the charging cable from the device if it will not be used for a long time. When disconnecting the cable, don't pull on the cord but on the plug.
- Don't use the cables in any way other than mentioned in the user guide; don't bend, cut, extend, knot or step on them.
- Do not insert any foreign objects into the openings of the device.
- If the device is damaged in any way or gets too hot, stop using it immediately.

Safety instructions in further languages: [www.speedlink.com](http://www.speedlink.com).

#### WICHTIGE SICHERHEITSHINWEISE

Die Nichtbeachtung dieser Hinweise kann zu Schäden am Produkt, Explosionen, Feuer oder elektrischen Schocks führen!

- Produkt nur entsprechend der Gebrauchsanleitung verwenden. Nicht öffnen oder reparieren.
- Produkt keinen Flüssigkeiten, Hitze oder Kälte aussetzen.
- Produkt nicht in einer feuchten Umgebung nutzen. Mit einem trockenen Tuch reinigen.
- Produkt und alle losen Teile von Kindern, Haustieren und unbefugten Personen fernhalten.
- Produkt nur mit dem mitgelieferten USB-Ladekabel und an einem USB-Anschluss des Typs A aufladen.
- Ladekabel vom Produkt abziehen, wenn das Produkt längere Zeit nicht verwendet wird. Beim Abziehen nicht am Kabel, sondern am Stecker ziehen.
- Kabel nur gemäß Gebrauchsanleitung verwenden; nicht knicken, verlängern oder verknoten; nicht einschneiden oder darauf treten.
- Keine fremden Objekte in die Öffnungen des Produktes einführen.
- Bei Beschädigung oder Überhitzung des Produktes sofort die Benutzung abbrechen.

Sicherheitshinweise in weiteren Sprachen: [www.speedlink.com](http://www.speedlink.com).

### WARNING SYMBOLS AND MARKINGS

Extended use of input devices may cause health problems such as discomfort or pain, as such, take regular breaks and consult a doctor if problems persist.

Bei extrem langer Benutzung von Eingabegeräten kann es zu gesundheitlichen Beschwerden wie Unbehagen oder Schmerzen kommen. Legen Sie regelmäßig Pausen ein und holen Sie bei wiederkehrenden Problemen ärztlichen Rat ein.

**CONFORMITY NOTICE**  
Operation of the device (the devices) may be affected by strong static, electrical or high-frequency fields (radio installations, mobile telephones, microwaves, electrostatic discharges). If this occurs, try increasing the distance from the devices causing the interference.

Conformity notice in further languages: [www.speedlink.com](http://www.speedlink.com).

**KONFORMITÄTSHINWEIS**  
Unter Einwirkung von starken statischen, elektrischen oder hochfrequenten Feldern (Funkanlagen, Mobiltelefonen, Mikrowellen, elektrostatische Entladungen) kann es zu Funktionsbeeinträchtigungen des Gerätes (der Geräte) kommen. Versuchen Sie in diesem Fall, die Distanz zu den störenden Geräten zu vergrößern.

Konformitätshinweis in weiteren Sprachen: [www.speedlink.com](http://www.speedlink.com).

### FCC STATEMENT

This equipment has been tested and found to comply with the limits for a Class B digital device, pursuant to part 15 of the FCC Rules. These limits are designed to provide reasonable protection against harmful interference in a residential installation. This equipment generates, uses and can radiate radio frequency energy and, if not installed and used in accordance with the instructions, may cause harmful interference to radio communications. However, there is no guarantee that interference will not occur in a particular installation. If this equipment does cause harmful interference to radio or television reception, which can be determined by turning the equipment off and on, the user is encouraged to try to correct the interference by one or more of the following measures:

- Reorient or relocate the receiving antenna.
- Increase the separation between the equipment and receiver.
- Connect the equipment to an outlet on a circuit different from that to which the receiver is connected.
- Consult the dealer or an experienced radio/TV technician for help.

This device complies with part 15 of the FCC rules. Operation is subject to the following two conditions: (1) This device may not cause harmful interference, and (2) this device must accept any interference received, including interference that may cause undesired operation.

Note: Modifications to this product will void the user's authority to operate this equipment.



### CONFORMITY NOTICE KONFORMITÄTSHINWEIS

**IMPORTER/MANUFACTURER / IMPORTEUR/HERSTELLER:**  
Zeitfracht Medien GmbH  
Im Dorf 5  
27404 Heeslingen  
GERMANY

Phone/Telefon: (+49) 4287 9244-0

**PRODUCT DETAILS / ANGABEN ZUM PRODUKT:**

Product no. / Produktnr.: 450500-BK

Type description / Typbeschreibung: TRAILBLAZER Racing Wheel for PS4/PS3/ Xbox Series X/One/ Switch/PC, black

**THE PRODUCT COMPLIES WITH THE FOLLOWING DIRECTIVES / DAS PRODUKT ENTSPRICHT DEN FOLGENDEN RICHTLINIEN:**

EMC 2014/30/EU

RoHS 2011/65/EU

For a full declaration of conformity, the latest user guide, FAQ or further information, please visit [www.speedlink.com](http://www.speedlink.com).

Eine vollständige Konformitätserklärung, das aktuelle Benutzerhandbuch, häufig gestellte Fragen und weitere Informationen finden Sie unter [www.speedlink.com](http://www.speedlink.com).

All rights reserved. Speedlink, the Speedlink word mark and the Speedlink wordmark are registered trademarks of Speedlink (registered trademark) and S.C. Glick.

Speedlink, the Speedlink word mark and the Speedlink wordmark are registered trademarks of Speedlink (registered trademark) and S.C. Glick. All other trademarks are the property of their respective owners. Technical specifications are subject to change without notice. Speedlink GmbH shall not be liable for any errors that may appear. Please keep this information for your reference.



Image: Safety instructions and compliance details.

## 2. PRODUCT OVERVIEW

The Trailblazer Racing Wheel is designed to provide an immersive racing experience across multiple platforms. It includes a steering wheel unit and a separate pedal unit.



Image: The Trailblazer Racing Wheel and its accompanying pedal unit.

## 2.1. Main Components

- **Racing Wheel Unit:** Features a rubberized rim for grip, integrated buttons, a digital D-pad, rapid-access shifter paddles, and a gear shifter.
- **Pedal Unit:** Includes highly responsive gas and brake pedals with rubber feet for stability.



Image: A detailed view of the racing wheel, highlighting the integrated buttons and gear shifter.

## 2.2. Key Features

- 180-degree steering lock for precise control.
- Powerful vibration effects for realistic feedback.
- Adjustable sensitivity settings.
- 7 suction cups on the wheel unit for secure mounting.
- 12 programmable buttons for customizable controls.
- 2 input-mode status LEDs.

## 3. SETUP INSTRUCTIONS

---

Follow these steps to connect your Trailblazer Racing Wheel to your desired platform.

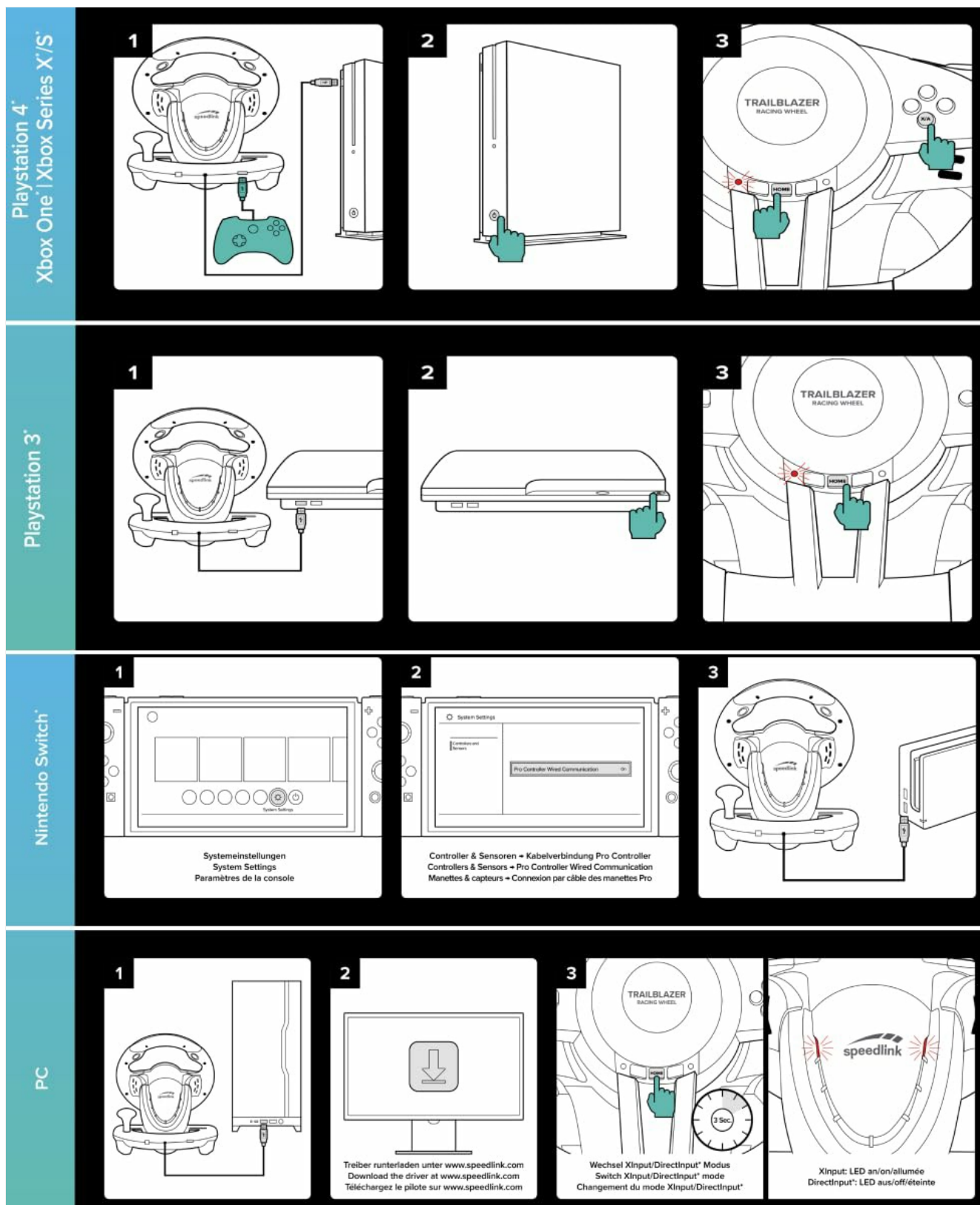


Image: Visual guide for connecting the racing wheel to various gaming platforms.

### 3.1. Connecting to PlayStation 4 / Xbox One / Xbox Series X/S

1. Connect the racing wheel's USB cable to an available USB port on your console.
2. Connect your official console controller (e.g., DualShock 4 for PS4) to the racing wheel's USB port using a compatible USB cable. This is essential for authentication.
3. Ensure the input mode LED on the racing wheel indicates the correct console mode.

### 3.2. Connecting to PlayStation 3



1. Connect the racing wheel's USB cable directly to an available USB port on your PlayStation 3 console.
2. The console should automatically recognize the racing wheel.

### 3.3. Connecting to Nintendo Switch

1. Go to System Settings on your Nintendo Switch.
2. Navigate to 'Controllers & Sensors' and enable 'Pro Controller Wired Communication'.
3. Connect the racing wheel's USB cable to the Nintendo Switch dock.

### 3.4. Connecting to PC

1. Connect the racing wheel's USB cable to an available USB port on your PC.
2. Download and install the necessary drivers from the official Speedlink website ([www.speedlink.com](http://www.speedlink.com)).
3. Select the desired input mode (XInput/DirectInput) using the mode switch on the racing wheel. The status LEDs will indicate the active mode.



Image: Illustration of connecting a console controller to the racing wheel for proper functionality.

## 4. OPERATING INSTRUCTIONS

---

Once connected, the Trailblazer Racing Wheel offers intuitive controls for an immersive gaming experience.

### 4.1. Steering and Pedals

- **Steering Wheel:** Provides a 180-degree rotation for precise steering input.
- **Gas Pedal:** Press down to accelerate.
- **Brake Pedal:** Press down to brake.

## 4.2. Gear Shifting

- **Gear Shifter:** Use the dedicated gear shifter for manual gear changes.
- **Shifter Paddles:** Utilize the rapid-access paddles located behind the steering wheel for quick gear shifts during gameplay.

## 4.3. Buttons and D-Pad

- The racing wheel features 12 buttons, including a precise digital D-pad, for various in-game functions.
- Many controls are remappable, allowing for personalized configurations within game settings.

## 4.4. Vibration Effects

The powerful vibration function provides tactile feedback, enhancing the realism of your racing experience. This feature is automatically active when supported by the game.

## 4.5. Sensitivity Adjustment

The racing wheel's sensitivity can be adjusted to suit your preference and the specific game you are playing. Refer to your game's control settings for detailed adjustment options.

# 5. MAINTENANCE

---

To ensure the longevity and optimal performance of your Trailblazer Racing Wheel, follow these simple maintenance guidelines:

- **Cleaning:** Regularly wipe the racing wheel and pedal unit with a dry, soft cloth. Avoid using abrasive cleaners, solvents, or excessive moisture.
- **Storage:** When not in use, store the device in a clean, dry place away from direct sunlight and extreme temperatures.
- **Cable Care:** Avoid sharply bending or twisting the cables. Ensure they are not pinched or under heavy objects.

# 6. TROUBLESHOOTING

---

If you encounter issues with your Trailblazer Racing Wheel, please refer to the following common solutions:

- **Device Not Recognized:**
  - Ensure all USB connections are secure.
  - For consoles (PS4/Xbox), verify that an official controller is connected to the racing wheel for authentication.
  - For PC, ensure the correct drivers are installed from [speedlink.com](https://www.speedlink.com) and the input mode is correctly selected.
  - Try connecting to a different USB port.
- **No Vibration Feedback:**
  - Check if the game you are playing supports vibration effects.
  - Ensure vibration settings are enabled within the game's options.
- **Steering/Pedal Input Issues:**
  - Recalibrate the racing wheel if your game offers this option.
  - Check for any physical obstructions around the pedals or steering wheel.

- **Buttons Not Responding:**

- Verify button mappings in your game's control settings.
- Ensure the device is in the correct input mode for your platform.

If these steps do not resolve the issue, please contact Speedlink customer support.

## 7. SPECIFICATIONS

---

Feature	Detail
Model Number	SL-450500-BK
Compatibility	PlayStation 3, PlayStation 4, PC, Xbox One, Xbox Series X/S, Nintendo Switch
Steering Lock	180 degrees
Buttons	12 (several remappable)
Vibration Effects	Yes
Connectivity	USB
Cable Length (USB)	2m
Cable Length (Pedals)	1.6m
Racing Wheel Dimensions (W x H)	264 x 252mm
Racing Wheel Dimensions (W x D x H)	approx. 270 x 330 x 275mm
Pedal Unit Dimensions (W x D x H)	approx. 220 x 232 x 120mm
Weight (Racing Wheel)	approx. 1.45kg
Weight (Pedal Unit)	approx. 0.46kg
EAN	<a href="#">4027301421743</a>

## WHEEL



## PEDAL



Image: Product label with EAN and compliance marks.




## 8. WARRANTY AND SUPPORT

For warranty information and customer support, please refer to the official Speedlink website or contact Jöllenbeck GmbH directly.




- **Manufacturer:** Jöllenbeck GmbH
- **Website:** [www.speedlink.com](http://www.speedlink.com)
- **Address:** Im Dorf 5, 27404 Heeslingen, Germany

Please retain your proof of purchase for any warranty claims.

### Related Documents - SL-450500-BK

	<a href="#">Speedlink TRAILBLAZER Racing Wheel User Guide</a> Comprehensive user guide for the Speedlink TRAILBLAZER Racing Wheel, covering setup, safety instructions, intended use, and technical specifications for PC, PlayStation, Xbox, and Nintendo Switch.
	<a href="#">SPEEDLINK TRAILBLAZER Racing Wheel User Guide: Setup and Instructions</a> Get detailed setup instructions and safety information for the SPEEDLINK TRAILBLAZER Racing Wheel (SL-450501-BK). Compatible with PC, PlayStation, Xbox, and Nintendo Switch.
	<a href="#">Speedlink RAIT Gamepad SL-650010-BK User Guide and Setup</a> Comprehensive guide for the Speedlink RAIT Gamepad (SL-650010-BK), covering software installation, connection settings for PC, PlayStation 3, and Nintendo Switch, XInput/DirectInput modes, rapid fire function, and safety instructions.



	<p><a href="#">Speedlink TORID Wireless Gamepad: Setup and User Guide</a></p> <p>Comprehensive guide to setting up and using the Speedlink TORID Wireless Gamepad (SL-6576-BK-02) for PC and PS3, including charging, connection, modes, and features.</p>
	<p><a href="#">Speedlink TAUROX Gaming Mouse User Guide - High Precision RGB Mouse</a></p> <p>Discover the Speedlink TAUROX Gaming Mouse (SL-680018-BK), a high-precision wired USB mouse with adjustable DPI, customizable RGB lighting, and ergonomic design for optimal gaming performance. This user guide provides essential setup, safety, and configuration details.</p>
	<p><a href="#">Speedlink PIAVO Ergonomic Deskset User Guide</a></p> <p>User guide for the Speedlink PIAVO Ergonomic Deskset, providing setup instructions, safety information, and feature details for the wireless keyboard and mouse combo.</p>