

Manuals+

[Q & A](#) | [Deep Search](#) | [Upload](#)

[manuals.plus](#) /

- › [Nilight](#) /
- › [Nilight RGB LED Rock Lights Kit User Manual](#)

Nilight RGB-RL

Nilight RGB LED Rock Lights Kit User Manual

Brand: Nilight | Model: RGB-RL

INTRODUCTION

Thank you for choosing the Nilight RGB LED Rock Lights Kit. This manual provides essential information for the proper installation, operation, and maintenance of your new rock lights. Designed for off-road vehicles, trucks, ATVs, UTVs, RZR's, and SUVs, these lights offer vibrant multicolor illumination with convenient Bluetooth app control.

Key Features:

- Phone APP Controlled: Compatible with iPhone and Android devices for comprehensive control.
- Dynamic Lighting Modes: Includes timing function, music mode, and flashing function for customizable lighting effects.
- Robust Construction: Features die-cast aluminum housing with toughened glass, ensuring durability.
- High Performance: 500 Lumens brightness with a flood beam (120 Degrees) and a 50,000-hour lifespan.
- Weatherproof Design: Waterproof, shockproof, dust-proof, and rust-proof for reliable outdoor use.
- Universal Fit: Suitable for a wide range of vehicles including off-road, Jeep, Motorcycle, Truck, Car, 4x4s, ATVs, UTVs, RZR's, SUVs, Tractors, and Boats.

PACKAGE CONTENTS

Please verify that all items listed below are included in your package:

- 4 x RGB LED Rock Lights
- 4 x Rubber Pads
- 4 x Connection Wiring Harnesses
- 1 x Controller



Figure 1: Nilight RGB LED Rock Lights Kit components.

The image above displays the complete package contents, including the four rock light pods, the necessary wiring harnesses, the central controller unit, and the rubber pads for mounting. Ensure all these parts are present before proceeding with installation.

SPECIFICATIONS

Attribute	Value
Brand	Nilight
Model Number	RGB-RL
Color	RGB (Red, Green, Blue)

Attribute	Value
Shape	Rectangular
Material	Aluminum
Finish Type	Aluminum
Light Source Type	LED
Power Source	Battery Powered (12 Volts)
Brightness	500 Lumens
Mounting Type	Flush Mount
Bulb Features	App Controlled, Timing Function, Music Mode, Flashing Function, Automatic Control
Number of Light Sources	4
Beam Angle	120 Degrees
Item Weight	2.6 pounds
Country of Origin	China

SETUP AND INSTALLATION

Follow these steps for proper installation of your Nilight RGB LED Rock Lights Kit:

1. **Choose Mounting Location:** Select a suitable location on your vehicle's undercarriage, wheel wells, or other desired areas. Ensure the surface is clean and dry.
2. **Attach Rubber Pads:** Each light pod comes with two types of rubber pads (flat and bull bar). Choose the appropriate pad for your mounting surface and seat the light pod onto it, ensuring the wire leads out from the side channel.
3. **Mount the Lights:** Securely mount each light pod in position using the provided screws and nuts.
4. **Connect Wiring Harnesses:** Connect the wiring harness from each light pod to the 8-way splitter on the main controller wiring. Ensure all 4 rock lights are connected to the splitter before connecting the main power. This prevents strong current from damaging the lights.
5. **Connect Controller to Power:** Connect the main controller box to your vehicle's 12V power source. It is recommended to connect to a switch first to avoid draining the battery when the vehicle is off.
6. **Download and Connect App:**
 - Scan the QR code provided on the controller or search for "Happy Lighting" in your device's app store.
 - Enable Bluetooth on your smartphone.
 - Open the "Happy Lighting" app and connect to the light device from the app menu.
 - Once connected, you can turn on and control the lights via the app.

SMART & SIMPLE CONTROL



Voice responsive

Dance to music rhythm

Color Adjustment

Brightness Adjustment

Change background

Options of dynamic modes and speed adjustment

Set a timer

Figure 2: Step-by-step installation guide.

The diagram illustrates the physical installation process, from selecting the correct rubber pad to securing the light and connecting the wiring. Proper wiring is crucial for optimal performance and safety.

STABLE BLUETOOTH CONTROLLER



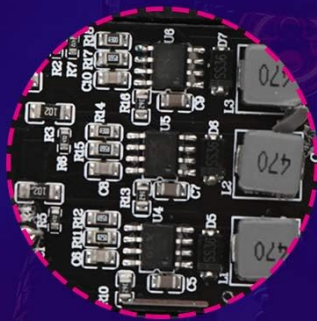
IOS7.0



Android 4.3



Quick connect



- ① Scan QR code or search "Happy Lighting" in app store to download the app.
- ② Connect the Bluetooth of your phone;
- ③ Connect the light device in the app menu and turn on the light

Figure 3: Bluetooth controller and app connection guide.

This image details the Bluetooth controller and the steps to connect it with your smartphone app, enabling smart control over your rock lights.

OPERATING INSTRUCTIONS

Your Nilight RGB LED Rock Lights are primarily controlled via the "Happy Lighting" smartphone application. Once connected, you can access various functions:

- **Color Adjustment:** Use the color wheel in the app to select any desired color from the RGB spectrum. You can also adjust brightness and speed for dynamic modes.
- **Music Mode:** Sync your lights to music playing on your phone. The lights will change colors and patterns in response to the audio rhythm.
- **Flashing Function:** Choose from various pre-set flashing patterns and adjust their speed to create different

visual effects.

- **Timing Function:** Set schedules for your lights to turn on or off automatically at specific times.
- **Voice Responsive:** The lights can react to voice commands or ambient sounds picked up by your phone's microphone.

QUALITY BUILT



Premium
Die-cast Aluminum



IP68
Waterproof



Super bright
high intensity LED chips

Figure 4: "Happy Lighting" app interface for smart control.

The app interface provides intuitive controls for customizing your lighting experience, from simple color changes to complex dynamic patterns synchronized with music or sound.

EASY INSTALLATION



1 Choose flat rubber pad or bull bar rubber pad for your use



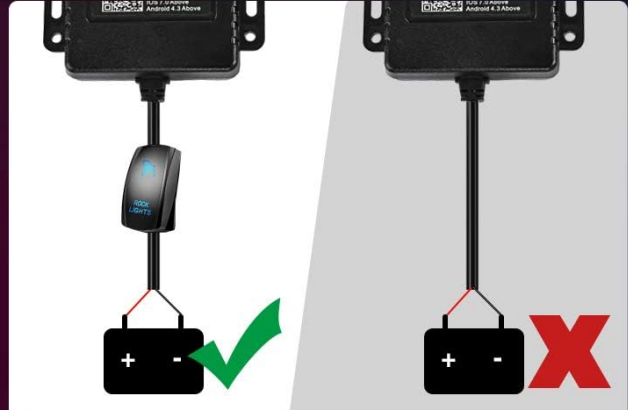
2 Get lights seated on the rubber pad, with the wire lead coming out from the side



3 Mount light on the position with the screws and nuts provided.



4 Quick connect the light to the 8 way splitter controller wires.



5 Connect controller box to power, we recommend connect to switch first before connecting directly to battery to avoid draining battery.

Figure 5: Examples of Nilight RGB LED Rock Lights in use.

This image demonstrates the versatile application of the rock lights on various vehicles, highlighting their ability to enhance both style and safety.

MAINTENANCE

To ensure the longevity and optimal performance of your Nilight RGB LED Rock Lights, follow these maintenance guidelines:

- **Regular Cleaning:** Periodically clean the light pods with a soft cloth and mild detergent to remove dirt, mud, and debris. Avoid abrasive cleaners that could scratch the toughened glass.
- **Inspect Wiring and Connections:** Regularly check all wiring harnesses and connections for any signs of wear, corrosion, or damage. Ensure connections remain secure and waterproof.
- **Check Mounting:** Verify that the light pods are still securely mounted and that the screws and nuts are tight.

Re-tighten if necessary.

- **Waterproof Integrity:** Although the lights are IP68 waterproof, avoid directing high-pressure water jets directly at the light pods or controller during washing, especially at close range.

STYLE AND SAFETY!



Widely used underglow lights for 4x4 offroading vehicles, Jeep pickup truck ATV UTV SUV RV Camper semi truck golf cart boat camping party etc. Adding lighting safety, style, and fun!



Figure 6: Durable and waterproof design of the rock light pod.

The robust construction and IP68 waterproof rating ensure the lights can withstand harsh conditions, but regular inspection and cleaning will prolong their lifespan.

TROUBLESHOOTING

If you encounter issues with your Nilight RGB LED Rock Lights Kit, refer to the following common problems and solutions:

Problem	Possible Cause	Solution
---------	----------------	----------

Problem	Possible Cause	Solution
Lights do not turn on.	No power to the controller; loose wiring connection; faulty light pod.	Check power source and fuse. Ensure all connections are secure. Test individual light pods if possible. Verify all 4 pods are connected to the splitter before connecting to power.
App cannot connect to the controller.	Bluetooth is off; app not properly installed; controller issue.	Ensure Bluetooth is enabled on your device. Restart the app and try reconnecting. Restart your phone. Check if the controller has power.
Colors are incorrect or inconsistent.	App setting error; partial light failure.	Verify color settings in the app. Check wiring for any damage or loose connections to individual light pods.
Lights flicker or dim.	Low voltage; loose connection; damaged wiring.	Check vehicle battery voltage. Inspect all wiring and connections for looseness or damage.

If the problem persists after attempting these solutions, please contact Nilight customer support for further assistance.

WARRANTY AND SUPPORT

Nilight products are designed for durability and performance. For specific warranty information regarding your RGB LED Rock Lights Kit, please refer to the warranty card included with your product or visit the official Nilight website.

For additional support, frequently asked questions, or to contact customer service, please visit the [Nilight Store on Amazon](#) or refer to the official User Manual PDF available online.

You can also find the official User Manual PDF [here](#).