

Reef Octopus 150SSS

Reef Octopus Classic 150SSS Protein Skimmer Instruction Manual

Model: 150SSS

INTRODUCTION

The Reef Octopus Classic 150SSS Protein Skimmer is designed to provide powerful filtration for aquariums up to 210 gallons, especially where sump space is limited. This skimmer is constructed from high-quality acrylic and can be fully disassembled for thorough cleaning. It features an Aquatrance pinwheel pump, which creates an optimal mix of water and air for efficient waste removal. Precision control is achieved through a simple vented wedge valve output, allowing cleaned water to exit below the water line for quiet operation.

SETUP AND INSTALLATION

Before installation, ensure all components are present and free from damage. The skimmer is designed for in-sump installation.

1. **Unpacking:** Carefully remove all parts from the packaging. Inspect for any shipping damage.
2. **Assembly:** Follow the manufacturer's assembly instructions provided in the box. Ensure all connections are secure.
3. **Placement:** Place the skimmer in your aquarium sump. The recommended water depth for optimal performance is crucial. Refer to the specifications for precise water level requirements.
4. **Power Connection:** Connect the pump to the controller, and then connect the controller to a power source.
5. **Initial Adjustment:** Upon first startup, the skimmer may produce excessive micro-bubbles. This is normal during the break-in period. Adjust the water level and air intake as needed to achieve a stable foam head.



Figure 1: The Reef Octopus Classic 150SSS Protein Skimmer. This image shows the assembled skimmer unit, highlighting its clear acrylic body, red accents, and the collection cup at the top.

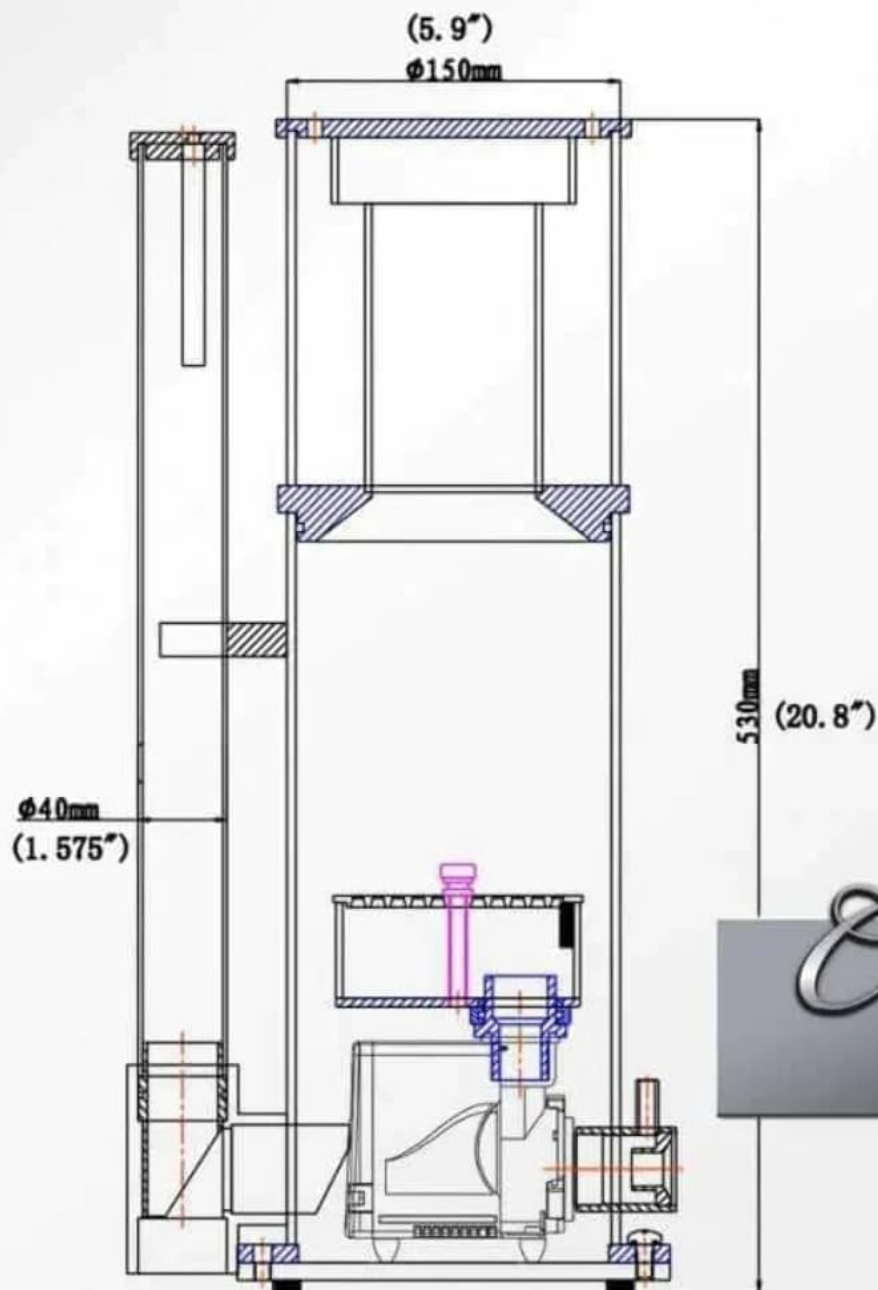


Figure 2: Technical diagram of the Classic 150SSS Skimmer. This diagram provides detailed measurements including body diameter (6 inches), height (20.9 inches), and footprint (7.3 x 9.45 inches), essential for sump compatibility.

Setup Video

Your browser does not support the video tag.

Video 1: Unboxing and Setup of a Protein Skimmer. This video demonstrates the unboxing and initial setup process for a similar protein skimmer, providing visual guidance for assembly and placement.

OPERATING INSTRUCTIONS

The Reef Octopus Classic 150SSS is designed for ease of use with minimal adjustments required after initial setup.

1. **Power On:** Once installed, connect the skimmer to a power outlet. The Aquatrance 2000S pump will begin operation.

2. **Water Level Adjustment:** The skimmer features a vented wedge valve output for precise control. Rotate the adjustment knob to fine-tune the internal water level and foam production. A higher water level generally results in wetter skimmate, while a lower level produces drier skimmate.
3. **Anti-Overflow Feature:** The skimmer is equipped with an anti-overflow sensor. If the collection cup fills to a critical level, the pump will automatically shut off to prevent spills. An alarm may sound to alert you.



Figure 3: The Reef Octopus Classic 150SSS Protein Skimmer in an operational state. This image shows the skimmer actively producing foam within its body, with the collection cup visible at the top.

MAINTENANCE

Regular maintenance ensures the longevity and optimal performance of your protein skimmer.

1. **Collection Cup Cleaning:** The collection cup should be emptied and cleaned regularly, typically once every 1-3 weeks depending on your aquarium's bioload. Remove the cup, discard the skimmate, and rinse the cup and lid

with fresh water.

2. **Skimmer Neck Cleaning:** Periodically clean the skimmer neck to prevent buildup that can impede foam production. This can be done with a brush or by wiping with a cloth.
3. **Pump Inspection:** Every few months, inspect the Aquatrance pump for any debris or blockages. Disassemble the pump if necessary to clean the impeller and housing.
4. **Air Silencer Maintenance:** Ensure the air silencer is clear of obstructions to maintain proper air intake.

Maintenance Video

Your browser does not support the video tag.

Video 2: Cleaning an In-Sump DC Protein Skimmer. This video demonstrates the process of cleaning a protein skimmer's collection cup and general maintenance, showing how to remove and rinse the components.

TROUBLESHOOTING

- **No Foam Production:** Check if the pump is running, ensure proper water level in the sump, and verify that the air intake is not blocked. A new skimmer may require a break-in period of several days to a few weeks.
- **Excessive Micro-bubbles:** This can occur during the break-in period. Ensure the skimmer is placed at the correct water depth and adjust the water output valve.
- **Skimmer Overflowing:** Check the collection cup for fullness. The anti-overflow sensor should prevent this, but if it occurs, reduce the water intake or power level. Ensure the water level in the sump is stable.
- **Poor Skimrate Quality:** Adjust the water level in the skimmer body. A higher water level produces wetter, lighter skimrate, while a lower level produces darker, thicker skimrate.

SPECIFICATIONS

- **Aquarium Capacity:** Up to 210 gallons
- **Pump:** Aquatrance 2000S
- **Footprint:** 7.3 inches x 9.45 inches
- **Body Diameter:** 6 inches
- **Height:** 20.9 inches
- **Installation Type:** In-Sump
- **Item Weight:** 11.18 pounds
- **Item Package Dimensions L x W x H:** 23.4 x 12.9 x 9.42 inches

WARRANTY AND SUPPORT

For warranty information, technical support, or replacement parts, please contact Reef Octopus customer service

directly. Refer to the product packaging or the official Reef Octopus website for contact details.