

Thrustmaster T300RS GT Racing Wheel

THRUSTMASTER T300RS GT Racing Wheel User Manual

Model: T300RS GT Racing Wheel

1. INTRODUCTION

The THRUSTMASTER T300RS GT Racing Wheel is a high-performance force feedback racing wheel designed for an immersive gaming experience. It is officially licensed for Gran Turismo and is compatible with PlayStation 5, PlayStation 4, and PC. This manual provides essential information for setting up, operating, maintaining, and troubleshooting your racing wheel.



Image: The complete Thrustmaster T300RS GT Racing Wheel setup, including the wheel base, steering wheel, and three-pedal set.

2. SAFETY INSTRUCTIONS

- Always ensure the racing wheel is securely mounted before use to prevent injury or damage.
- Keep the device away from water or excessive moisture.
- Do not attempt to disassemble or modify the device. Refer all servicing to qualified personnel.
- Use only the power supply provided with the device. Ensure the power outlet matches the voltage requirements.
- Avoid prolonged exposure to strong force feedback, which may cause discomfort. Take breaks as needed.

3. PACKAGE CONTENTS

Your THRUSTMASTER T300RS GT Racing Wheel package includes the following items:

- T300RS GT Racing Wheel Base

- Detachable GT Style Racing Wheel
- T3PA GT Edition 3-Pedal Set
- Power Cable
- Mounting System (Table Clamp)
- User Manual (this document)

4. SETUP

Follow these steps to set up your racing wheel:

1. **Connect the Pedals:** Connect the T3PA GT Edition pedal set to the racing wheel base using the dedicated connector.
2. **Attach the Wheel:** Align the detachable GT Style Racing Wheel with the wheel base. Secure it by turning the collar and then tightening the screw at the 6 o'clock position. Exercise caution not to overtighten.
3. **Mount the Wheel Base:**
 - **Table Clamp:** Use the included table clamp to secure the wheel base to a desk or table. Ensure it is firmly tightened for stability.
 - **Hard Mounting:** For a more permanent setup, the wheel base has two M6 mounting holes on the underside. These require M6 bolts (not included). Do not thread bolts more than 12mm into the base.
4. **Connect to Console/PC:** Plug the wheel's USB cable into an available USB port on your PlayStation 5, PlayStation 4, or PC.
5. **Connect Power:** Plug the power cable into the wheel base and then into a wall outlet.
6. **Install Drivers/Firmware (PC Only):** For PC use, visit support.thrustmaster.com to download and install the latest drivers and firmware for your T300RS GT Racing Wheel. This is crucial for optimal performance and functionality.



Image: Side view of the Thrustmaster T300RS GT Racing Wheel base, showing its robust construction and ventilation.

Setup Video

Video: An official Thrustmaster video demonstrating the T300 Base, providing a visual guide to its components and initial setup.

5. OPERATING INSTRUCTIONS

Force Feedback System

The T300RS GT features a highly responsive and realistic force feedback system, powered by a brushless motor and a dual-belt mechanism. This design ensures smooth, quiet, and precise force effects, allowing you to feel every detail of the road, tire grip, and impacts.

Racing Wheel Features

The 11-inch (28 cm) diameter racing wheel features brushed metal central spokes and a reinforced rubber texture around its entire circumference for enhanced grip. It includes:

- **Action Buttons:** A full set of buttons for in-game controls, including PlayStation-specific buttons (PS, SHARE, OPTIONS).
- **Paddle Shifters:** Large, metal paddle shifters are mounted directly on the wheel for quick and precise gear changes. They provide a tactile click and are designed for easy operation without changing your grip.



COMPATIBLE WITH

PS5

PS4

PC

Image: The Thrustmaster T300RS GT Racing Wheel, highlighting its compatibility with PlayStation 5, PlayStation 4, and PC.



Image: A detailed view of the Thrustmaster T300RS GT Racing Wheel, showcasing its design and button layout, set against a racing track background.

Pedal Set Features

The T3PA GT Edition pedal set is robustly built with an internal metal structure and brushed metal pedal faces. Key features include:

- **Adjustable Pedals:** The accelerator and clutch pedals are adjustable for height and spacing, allowing for personalized comfort and control.
- **Conical Rubber Brake Mod:** An included conical rubber stop can be installed on the brake pedal to provide a progressive resistance, simulating a more realistic braking feel. This enhances precision during panic braking.
- **Mounting:** The pedal set also features mounting holes for secure attachment to a sim rig (M6 screws not included, max 10mm thread depth).



Image: A close-up view of the Thrustmaster T3PA GT Edition pedal set, highlighting the metal pedal faces and robust construction.

Operation Video

Video: A demonstration of the Thrustmaster T300RS GT Racing Wheel and pedals in active use, showcasing its responsiveness and performance during gameplay.

6. MAINTENANCE

To ensure the longevity and optimal performance of your T300RS GT Racing Wheel, follow these maintenance guidelines:

- **Cleaning:** Use a soft, dry cloth to clean the wheel, pedals, and base. Avoid abrasive cleaners or solvents.
- **Cooling Fan:** The wheel base includes a built-in cooling fan that activates as needed to maintain optimal operating temperature. This fan is very quiet and may run continuously at a low RPM even when the PC is shut down, unless the power is unplugged. This is part of the 'Forced Cooling Mode' designed to protect the internal components.
- **Storage:** When not in use, store the device in a clean, dry environment, away from direct sunlight or extreme

temperatures.

7. TROUBLESHOOTING

If you encounter issues with your T300RS GT Racing Wheel, refer to the following common solutions:

Common Issues and Solutions

- Wheel is Off-Center:** If the wheel is not centered after calibration, refer to the Thrustmaster support website's FAQ section for this model. This is a common issue with an easy fix, often involving a specific calibration procedure.
- Squeaking Noise from Belts:** A squeaking noise may occasionally occur from the internal belts after some hours of use. This often resolves itself with continued use. If persistent, ensure the device is clean and free from obstructions.
- "Hot Electronics" Smell:** A slight odor resembling hot electronics may be present when the device is new or during initial heavy use. This typically dissipates over time and is not indicative of a fault unless accompanied by other issues or excessive heat.
- Buttons Not Working / Calibration Issues:** Ensure the latest drivers and firmware are installed (especially for PC). Re-calibrate the wheel through the Thrustmaster control panel. Check all connections are secure.
- Power Issues:** Ensure the power cable is securely connected to both the wheel base and a functional wall outlet. Verify the outlet provides the correct voltage. Avoid using damaged cables or non-standard power sources.

Troubleshooting Videos

Video: A user demonstrating issues with the steering wheel buttons and calibration, which can be helpful for diagnosing similar problems.

Video: A user showing a problem where the wheel is not functioning correctly and is stuck, providing visual context for troubleshooting mounting or operational issues.

8. SPECIFICATIONS





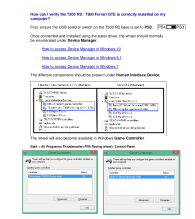
Feature	Detail
Model Number	4169088
Compatibility	PlayStation 5, PlayStation 4, PC
Force Feedback System	Brushless motor, Dual-belt mechanism
Wheel Diameter	11 inches (28 cm)
Pedal Set	T3PA GT Edition (3 pedals: Accelerator, Brake, Clutch)
Product Dimensions	12.52 x 18.27 x 13.86 inches
Item Weight	22.39 Pounds
Release Date	October 13, 2016
Manufacturer	Thrustmaster
Country of Origin	China

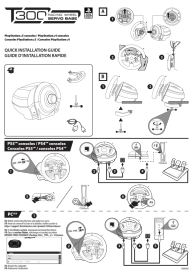
9. WARRANTY AND SUPPORT

For detailed warranty information and technical support, please refer to the official Thrustmaster resources:

- **Official User Manual (PDF):** For a comprehensive guide, you can download the official user manual[here](#).
- **Warranty Information (PDF):** Details regarding your product's warranty can be found[here](#).
- **Thrustmaster Support Website:** Visit support.thrustmaster.com for FAQs, drivers, firmware updates, and direct support contact.

Related Documents - T300RS GT Racing Wheel

	<p>Thrustmaster T300RS GT Edition User Manual</p> <p>User manual for the Thrustmaster T300RS GT Edition racing wheel, compatible with PlayStation 5, PlayStation 4, and PC. Includes technical features, setup instructions, and safety warnings.</p>
	<p>Thrustmaster T300RS GT Edition Racing Wheel User Manual</p> <p>Comprehensive user manual for the Thrustmaster T300RS GT Edition racing wheel and pedal set. Includes setup guides, technical features, compatibility information for PlayStation 5, PlayStation 4, and PC, and safety instructions.</p>
	<p>Thrustmaster T300 Series Racing Wheel: Auto-Calibration and Centering Guide</p> <p>Learn how to auto-calibrate and center your Thrustmaster T300 series racing wheel for optimal performance on PC, PS4, and PS5. This guide provides step-by-step instructions to ensure your wheel is perfectly aligned.</p>
	<p>Thrustmaster T300RS GT Edition Racing Wheel User Manual</p> <p>Comprehensive user manual for the Thrustmaster T300RS GT Edition racing wheel, covering setup, features, safety warnings, and maintenance for PlayStation 3, PlayStation 4, and PC.</p>
	<p>Verifying Thrustmaster T300 RS and Ferrari GTE Installation on PC</p> <p>A guide to verifying the correct installation of Thrustmaster T300 RS and T300 Ferrari GTE racing wheels on a PC. This document covers checking Device Manager and Windows Game Controller settings, and accessing the product's control panel for configuration.</p>



[Thrustmaster T300 Servo Base: Quick Installation Guide](#)

Concise guide for installing the Thrustmaster T300 Servo Base racing wheel on PlayStation consoles and PC, including driver download links and important safety information.