

ULTRALOCK Ultralock UL3 BT AB

ULTRALOCK UL3 BT Smart Door Lock User Manual

Model: Ultralock UL3 BT AB | Brand: ULTRALOCK

INTRODUCTION

The ULTRALOCK UL3 BT is a state-of-the-art Bluetooth-enabled smart door lock designed to provide secure and convenient keyless entry. This innovative lock combines fingerprint recognition, touchscreen keypad access, and smartphone control, offering multiple ways to unlock your door. It's an ideal solution for modern homes and offices, enhancing security and simplifying access management.

KEY FEATURES

- **5-in-1 Keyless Entry:** Unlock using fingerprint, code, smartphone app, shake/knock to open, or traditional key.
- **Reversible Lever:** Designed to fit both left-handed and right-handed doors.
- **Durable Construction:** Made with strong zinc alloy, suitable for both indoor and outdoor installation.
- **Bluetooth 4.0 Low Energy Connectivity:** Seamlessly connect with your smartphone for control via the Ultralock app.
- **High User Capacity:** Stores up to 95 fingerprints and 95 user codes, perfect for multiple users, visitors, and service personnel.
- **Anti-Peep Touchscreen:** Allows you to enter your security code embedded within a random group of numbers to prevent code exposure.
- **Auto-Lock Function:** Automatically locks the door after a set period, ensuring your security is never forgotten.
- **Passage Mode:** Keep the lock open for free access during high-traffic periods.
- **Lockout Mode:** Disables all electronic features, allowing only mechanical key access. This is useful for extended absences or when maximum security is required.



Figure 1: Overview of ULTRALOQ UL3 BT features including touchscreen, fingerprint sensor, and battery life.



Figure 2: Detailed diagram highlighting Bluetooth connectivity, Sense-on, Anti-peep Touchscreen, Advanced Fingerprint Identification, Solid and Resistant build, Intuitive OLED Display, Hidden Backup Key, Knock to Open, and Three Locking Modes.

SETUP AND INSTALLATION

The ULTRALOQ UL3 BT is designed for straightforward DIY installation, typically taking only minutes. Ensure your door meets the required specifications for proper fit. For detailed step-by-step instructions, please refer to the comprehensive Installation Manual provided with your product or available online.



Figure 3: ULTRALOCK UL3 BT Smart Lock installed on an exterior door, demonstrating its suitability for outdoor use.



Figure 4: ULTRALOCK UL3 BT Smart Lock installed on an interior door, showcasing its sleek design within a home environment.

OPERATING THE LOCK

Unlocking Methods:

- **Fingerprint Identification:** Place your registered finger on the sensor for quick and secure access.



Figure 5: A hand demonstrating fingerprint unlock on the ULTRALOQ UL3 BT.

- **Code Entry:** Use the anti-peep touchscreen to enter your secure code. You can embed your actual code within a longer sequence of random numbers for added privacy.
- **Smartphone App:** Connect via Bluetooth to unlock your door directly from the Ultraloq app on your iOS or Android device.
- **Apple Watch:** For convenient keyless access, unlock your door directly from your Apple Watch.
- **Mechanical Key:** A traditional key is provided as a backup for manual unlocking.

App Features:

- **User Management:** Easily add, modify, or delete users and their access methods (fingerprint, code, eKey).
- **Temporary eKeys:** Share time-limited access with guests or service providers by sending temporary eKeys for specific dates and times.
- **Log Records:** View a detailed history of who has entered and exactly when, providing enhanced security monitoring.
- **Lock Modes:**
 - **Auto-Lock:** Automatically re-locks the door after a user-defined period (e.g., 10-999 seconds) for peace of mind.

- **Passage Mode:** Keeps the lock unlocked for continuous free access, ideal for high-traffic times or events.
- **Lockout Mode:** Disables all electronic entry methods, allowing only mechanical key access. This is useful for extended absences or when maximum security is required.

MAINTENANCE

The ULTRALOQ UL3 BT is powered by 3 AA batteries (included). These batteries provide power for up to 8,000 access cycles or approximately 1 year of typical use. The lock features a low battery alarm that will notify you via the display and the smartphone app when the batteries need to be replaced.



Figure 6: The battery compartment of the ULTRALOQ UL3 BT, showing the placement of 3 AA batteries.

3 AA batteries.
Up to 8,000 times access.
Low battery alarm on App and display.



Figure 7: A smartphone displaying a low battery alarm for the ULTRALOCK UL3 BT, indicating it's time for battery replacement.

To replace batteries, open the battery cover on the interior side of the lock and insert new AA batteries, ensuring correct polarity. Always use high-quality alkaline batteries for optimal performance.

TROUBLESHOOTING

If you encounter any issues with your ULTRALOCK UL3 BT, consider the following common solutions:

- **Lock Not Responding:** Check battery levels. If batteries are completely drained, use the mechanical key for entry.
- **Fingerprint Not Recognized:** Ensure your finger is clean and dry. Try re-registering your fingerprint through the app.
- **Code Not Working:** Double-check the code entry. Ensure you are not in Lockout Mode.

- **App Connectivity Issues:** Ensure Bluetooth is enabled on your smartphone and you are within range of the lock. Try restarting the app or your phone.
- **Door Not Locking/Unlocking Properly:** Verify that the lock is correctly installed and aligned with the door frame.

For more complex issues, refer to the detailed User Guide (PDF) or contact ULTRALOG customer support.

SPECIFICATIONS

Attribute	Detail
Brand	ULTRALOG
Model Name	5-in-1 Keyless Entry
Special Feature	Auto-Lock, Fingerprint, Keyless, Reversible Lever
Lock Type	Latch
Item Dimensions (L x W x H)	7 x 6.3 x 3.5 inches
Material	Zinc
Color	Aged Bronze
Item Weight	6 Pounds
Connectivity Protocol	Bluetooth
Controller Type	Amazon Alexa, IFTTT, SmartThings (via optional bridge)
Batteries Required	3 AA batteries (included)
UPC	850770008023, 855929003690, 855929003874



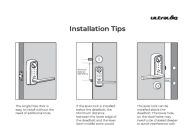
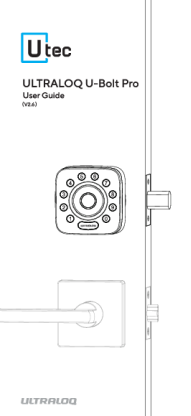
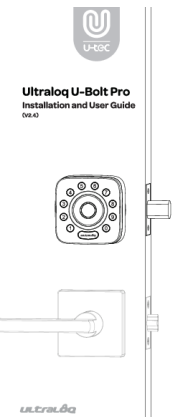
WARRANTY AND SUPPORT

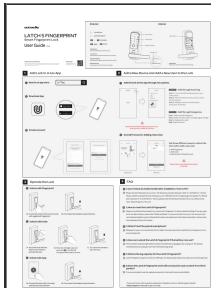
The ULTRALOG UL3 BT Smart Door Lock comes with an **18-month warranty** from the date of purchase, covering manufacturing defects and malfunctions under normal use. Please retain your proof of purchase for warranty claims.

For comprehensive support, including detailed installation guides, troubleshooting tips, and frequently asked questions, please refer to the official User Guide (PDF) available for download:

[Download Official User Guide \(PDF\)](#)

You can also visit the official ULTRALOG website or contact their customer service for further assistance.

	<p>UltraLoq UL3 Fingerpint and Touchscreen Smart Lock Installation Guide</p> <p>Step-by-step installation instructions for the UltraLoq UL3 Fingerpint and Touchscreen Smart Lock, including a list of included components and important notes for a successful setup.</p>
	<p>UltraLoq Latch 5 Fingerpint Smart Lock User Guide</p> <p>User guide for the UltraLoq Latch 5 Fingerpint Smart Lock, detailing setup, operation, and troubleshooting. Learn how to add the lock to the U-tec app, manage users, and unlock your door using fingerprint, code, or the mobile app.</p>
	<p>UltraLoq Smart Lock Installation Tips</p> <p>Provides essential installation tips for UltraLoq smart door locks, covering single-hole door mounting, lever lock placement relative to deadbolts, and necessary adjustments for optimal fit and function.</p>
	<p>ULTRALOQ U-Bolt Pro Smart Lock User Guide</p> <p>Comprehensive user guide for the ULTRALOQ U-Bolt Pro smart lock, covering product overview, installation, usage, and troubleshooting.</p>
	<p>UltraLoq U-Bolt Pro Installation and User Guide</p> <p>Comprehensive guide for installing and using the UltraLoq U-Bolt Pro smart lock, covering setup, features, and troubleshooting.</p>



[Ultraq Latch 5 Fingerprint Smart Lock User Guide](#)

Comprehensive user guide for the Ultraq Latch 5 Fingerprint Smart Lock, covering setup, adding users, operation, and troubleshooting. Learn how to install and use your smart fingerprint lock.