

Sauder 420055

Sauder Select Multipurpose Storage Cabinet

Model: 420055 | Brand: Sauder

INTRODUCTION

This manual provides comprehensive instructions for the assembly, operation, and maintenance of your Sauder Select Multipurpose Storage Cabinet, Model 420055. This versatile cabinet, finished in Cinnamon Cherry, is designed to offer organized storage with a garment rod, fixed shelf, adjustable shelf, and two drawers, making it suitable for various rooms such as bedrooms, utility rooms, or home offices.

SAFETY INFORMATION

WARNING: This product may contain chemicals known to the State of California to cause cancer and birth defects or other reproductive harm. Always refer to this instruction manual for proper assembly and usage to ensure safety. Ensure all hardware is securely fastened before use. Do not overload shelves or drawers. For stability, it is recommended to secure the cabinet to a wall using appropriate anti-tip hardware (not always included, but highly recommended for safety, especially in homes with children).

PACKAGE CONTENTS

Before beginning assembly, verify that all components are present and undamaged. The package should include:

- All necessary engineered wood panels for the cabinet structure, doors, and drawers.
- Hardware kit (screws, dowels, cam locks, drawer slides, handles, garment rod supports).
- Garment rod.
- Adjustable shelves and fixed shelves.
- Detailed assembly instructions.

If any parts are missing or damaged, contact Sauder customer support for assistance.

SETUP AND ASSEMBLY INSTRUCTIONS

Assembly is required for this product. Follow the included step-by-step instructions carefully. It is recommended to have a second person for assistance during assembly.

1. **Unpack and Organize:** Open the box in the area where the cabinet will be assembled. Carefully remove all parts and lay them out. Verify all parts against the included parts list.
2. **Tools Required:** A Phillips head screwdriver is essential. A low-torque electric drill can expedite the process but use caution to avoid stripping screws or damaging wood.
3. **Panel Assembly:** Begin by assembling the main frame of the cabinet. Ensure all cam locks and dowels are properly seated and tightened.
4. **Drawer Assembly:** Assemble the two drawers, ensuring the drawer slides are correctly oriented. If handles are difficult to install, pre-tapping the holes may be necessary.
5. **Door Installation:** Attach the doors using the provided hinges. Ensure the garment rod brackets are installed on the proper sides before attaching the doors.
6. **Shelf Placement:** Install the fixed shelf and adjustable shelves as desired.
7. **Final Positioning and Stability:** Once assembled, carefully move the cabinet to its final location. If the floor is uneven, use shims to level the cabinet and prevent doors or drawers from becoming misaligned. Secure the cabinet to a wall stud using an anti-tip strap or screws for enhanced stability.

Your browser does not support the video tag.

Video: This video demonstrates the proper technique for installing cam and dowel fasteners during assembly, a common step in Sauder furniture construction.



Image: Detail of a self-closing adjustable hinge, allowing for precise door alignment.



Image: Detail of the decorative silver handle on one of the cabinet drawers.



Image: Decorative hardware and panel detailing on the cabinet, showcasing the Cinnamon Cherry finish.

OPERATING INSTRUCTIONS (USAGE)

The Sauder Select Multipurpose Storage Cabinet is designed for versatile organization. Utilize its features as follows:

- **Garment Rod:** The full-length door section includes a garment rod for hanging clothes such as jackets, shirts, and dresses.
- **Adjustable Shelves:** Customize the interior space by adjusting the height of the shelves to accommodate items of various sizes, from folded linens to books or decorative items.
- **Drawers:** The two deep drawers provide concealed storage for smaller items, accessories, or personal belongings.

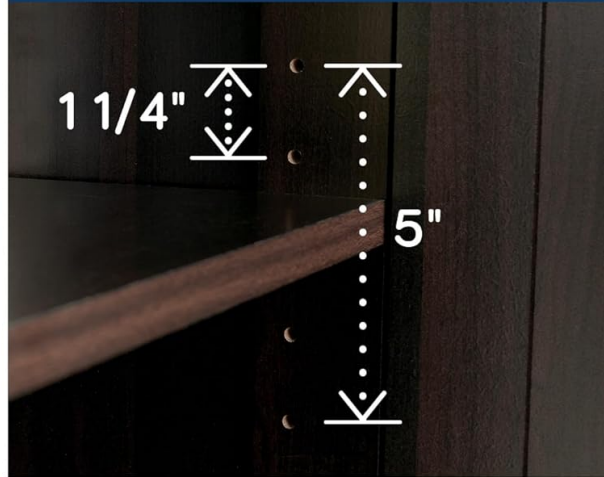


Image: The Sauder Select Multipurpose Storage Cabinet in Cinnamon Cherry, closed, in a bedroom setting.

Self-Closing Adjustable Hinges



Adjustable Shelf



Garment Rod



Two Spacious Drawers



Image: Detailed views highlighting key features: self-closing adjustable hinges, adjustable shelf, garment rod, and spacious drawers.



Bath



General Storage



Laundry / Utility



Office

Image: Examples of the cabinet's versatile use in various rooms, including a bathroom, general storage area, laundry room, and office.

MAINTENANCE

To maintain the appearance and longevity of your storage cabinet:

- **Cleaning:** Wipe surfaces with a damp cloth. Avoid harsh chemicals or abrasive cleaners, which can damage the finish.
- **Spills:** Clean spills immediately to prevent staining or damage to the engineered wood.
- **Hardware:** Periodically check all screws and fasteners to ensure they remain tight. Tighten as needed to maintain structural integrity.

TROUBLESHOOTING

Issue	Possible Cause	Solution
-------	----------------	----------

Issue	Possible Cause	Solution
Doors or drawers are crooked/misaligned.	Uneven floor; loose hinges/drawer slides; incorrect assembly.	Level the cabinet with shims if the floor is uneven. Adjust door hinges using the adjustment screws. Tighten screws on drawer rails. Review assembly instructions for correct placement of parts.
Drawers make noise or stick.	Loose drawer slide screws; incorrect rail alignment.	Tighten all screws on the drawer slides. Ensure the drawer rails are installed in the correct holes as per the manual.
Cabinet feels unstable or wobbly.	Loose fasteners; not secured to wall.	Ensure all assembly fasteners are tightened. Secure the cabinet to a wall stud using an anti-tip kit (if not included, purchase separately for safety).
Handles are loose or difficult to attach.	Screws not fully engaged; holes not properly aligned.	Ensure screws are fully tightened. If holes are tight, gently pre-tap them with a smaller screw or drill bit before inserting the handle screws.

SPECIFICATIONS

- **Model Number:** 420055
- **Brand:** Sauder
- **Color:** Cinnamon Cherry
- **Material:** Engineered Wood
- **Product Dimensions (D x W x H):** 19.45" x 40" x 71.1" (49.4 cm x 101.6 cm x 180.6 cm)
- **Item Weight:** 136.2 Pounds (61.78 kg)
- **Number of Doors:** 2
- **Number of Drawers:** 2
- **Number of Shelves:** 3 (including 1 fixed, 2 adjustable)
- **Additional Features:** Adjustable Shelf, Garment Rod
- **Assembly Required:** Yes



Image: External dimensions of the Sauder Select Multipurpose Storage Cabinet.

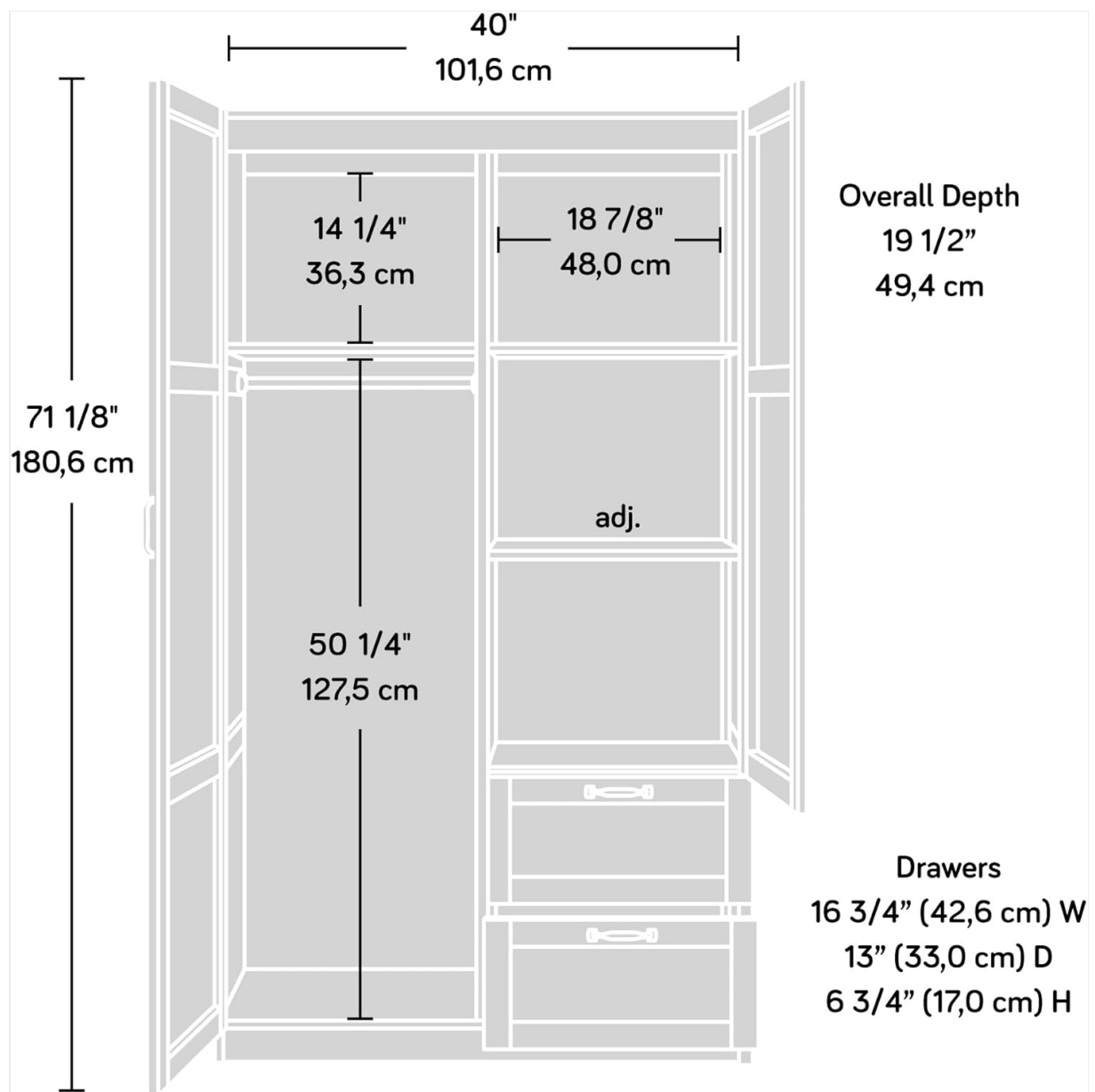
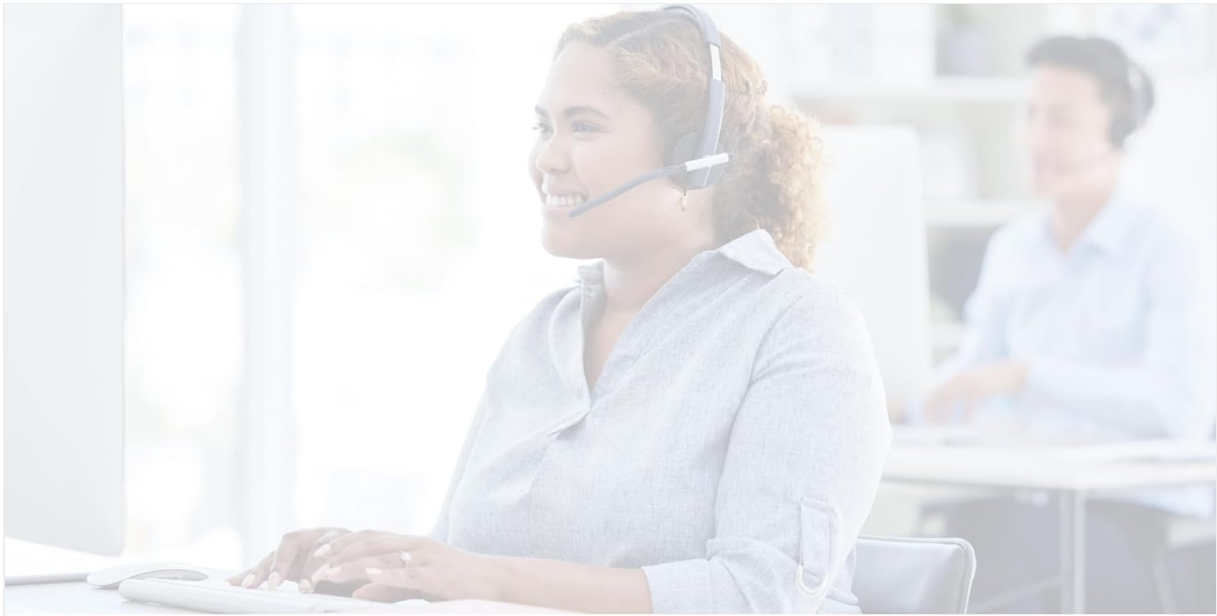


Image: Internal dimensions and layout of the cabinet, including shelf and drawer measurements.

WARRANTY AND SUPPORT

This Sauder product is protected by a 5-year limited warranty. For warranty claims, missing parts, assembly assistance, or any other support needs, please contact Sauder customer service.

- **Online Support:** Visit sauder.com/service for live chat, assembly tip videos, and replacement parts.
- **Phone Support:** Contact the domestic call center at 800-523-3987.



DOMESTIC CALL CENTER
READY TO ASSIST.

sauder.com/service

800-523-3987

Image: Sauder's domestic call center is available to assist with product inquiries and support.