

Salus Controls KL08RF (132801)

Salus Controls iT600 KL08RF Wireless Wiring Centre

Model: KL08RF (132801)

User Manual

1. INTRODUCTION

The Salus Controls iT600 KL08RF is an 8-zone wireless wiring centre designed to simplify the installation and control of underfloor heating systems. It provides a central point for connecting thermostats, actuators, pumps, and boilers, facilitating efficient and organized heating management. This manual provides essential information for the safe and effective installation, operation, and maintenance of your KL08RF wiring centre.

2. SAFETY INFORMATION

WARNING: Electrical Shock Hazard

- Installation must be carried out by a qualified electrician in accordance with national and local wiring regulations.
- Always disconnect the main power supply before performing any installation, maintenance, or wiring work.
- Ensure all connections are secure and properly insulated.
- Do not expose the device to moisture or extreme temperatures.
- This product is designed for indoor use only.

3. PACKAGE CONTENTS

- Salus Controls KL08RF Wireless Wiring Centre
- Salus CO10RF USB Coordinator (Wireless Communication Dongle)
- Mounting Screws and Wall Plugs
- User Manual (this document)



Figure 3.1: Salus Controls KL08RF Wiring Centre and USB Coordinator in Retail Packaging. This image shows the product as it appears when unboxed, including the main wiring centre unit, the separate USB coordinator, and the product's retail packaging.

4. SETUP AND INSTALLATION

4.1 Mounting the Wiring Centre

Choose a suitable location for mounting the KL08RF wiring centre, preferably near the underfloor heating manifold and away from direct heat sources or moisture. Ensure adequate space for wiring connections.

1. Mark the drilling points on the wall using the wiring centre as a template.
2. Drill holes and insert wall plugs.
3. Secure the wiring centre to the wall using the provided screws.

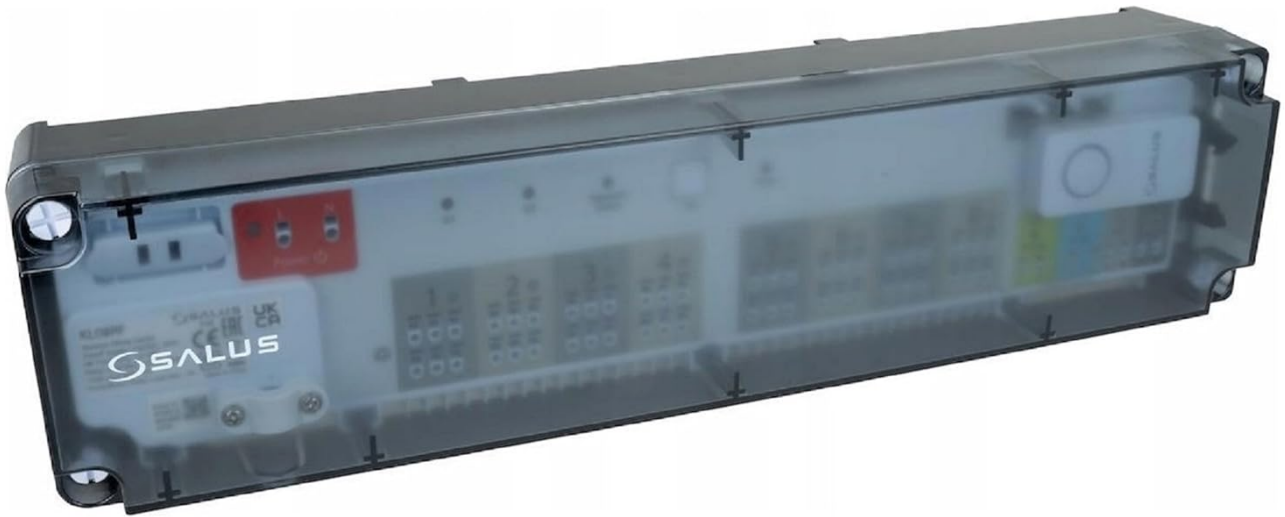


Figure 4.1: Salus Controls KL08RF Wireless Wiring Centre with Cover Closed. This image displays the wiring centre with its translucent cover securely in place, showing its compact and enclosed form factor once installed.

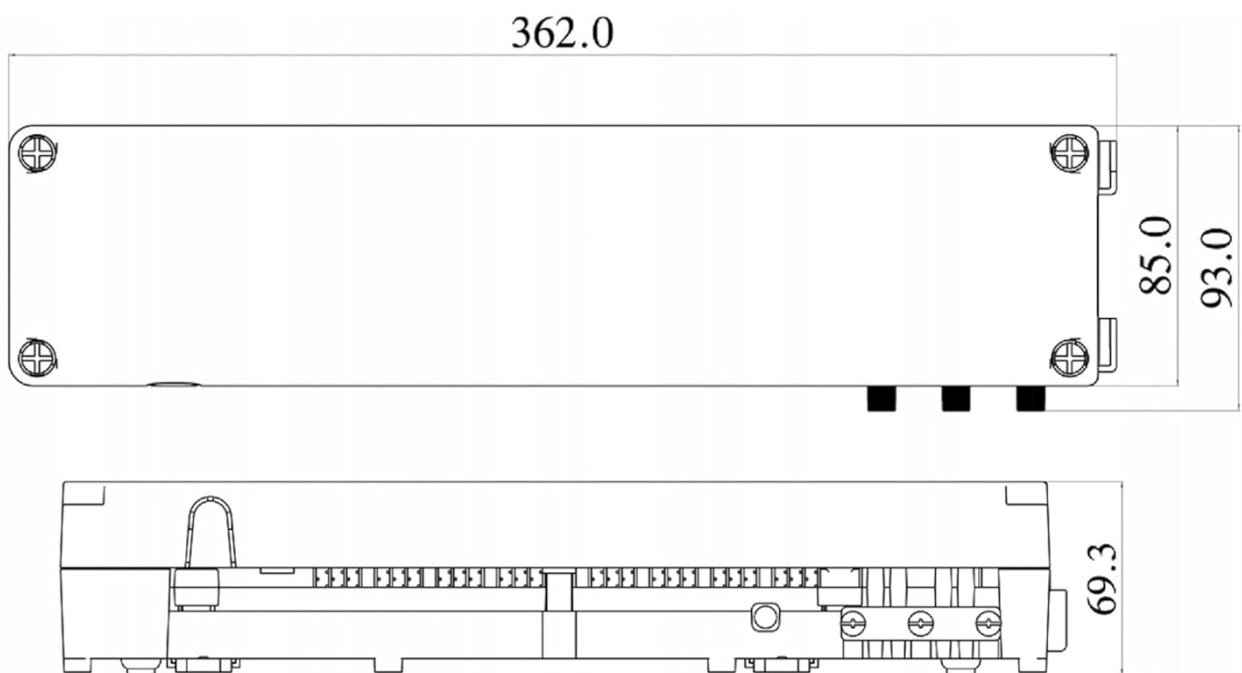


Figure 4.2: Dimensional Drawing of Salus Controls KL08RF Wiring Centre. A technical drawing illustrating the precise measurements (length: 362.0 mm, width: 85.0-93.0 mm, height: 69.3 mm) of the KL08RF unit, crucial for planning installation space.

4.2 Wiring Connections

The KL08RF wiring centre provides connections for up to 8 heating zones, a pump, a boiler, and a dew point sensor. Refer to the detailed wiring diagram below for proper connections.



Figure 4.3: Salus Controls KL08RF Wireless Wiring Centre with USB Dongle. This image shows the main unit with its cover open, revealing the internal terminals for power, zones 1-8, pump, boiler, and dew point sensor connections, along with the inserted CO10RF USB coordinator.



Figure 4.4: Close-up of KL08RF Connections and CO10RF USB Dongle. A detailed view of the wiring terminals, including the power input (L, N), G1/G2 terminals, zone outputs (1-8), pump, boiler, and dew point sensor connections. The CO10RF USB dongle (Device ID: 001E5E09090A17E9) is clearly visible in its dedicated port.

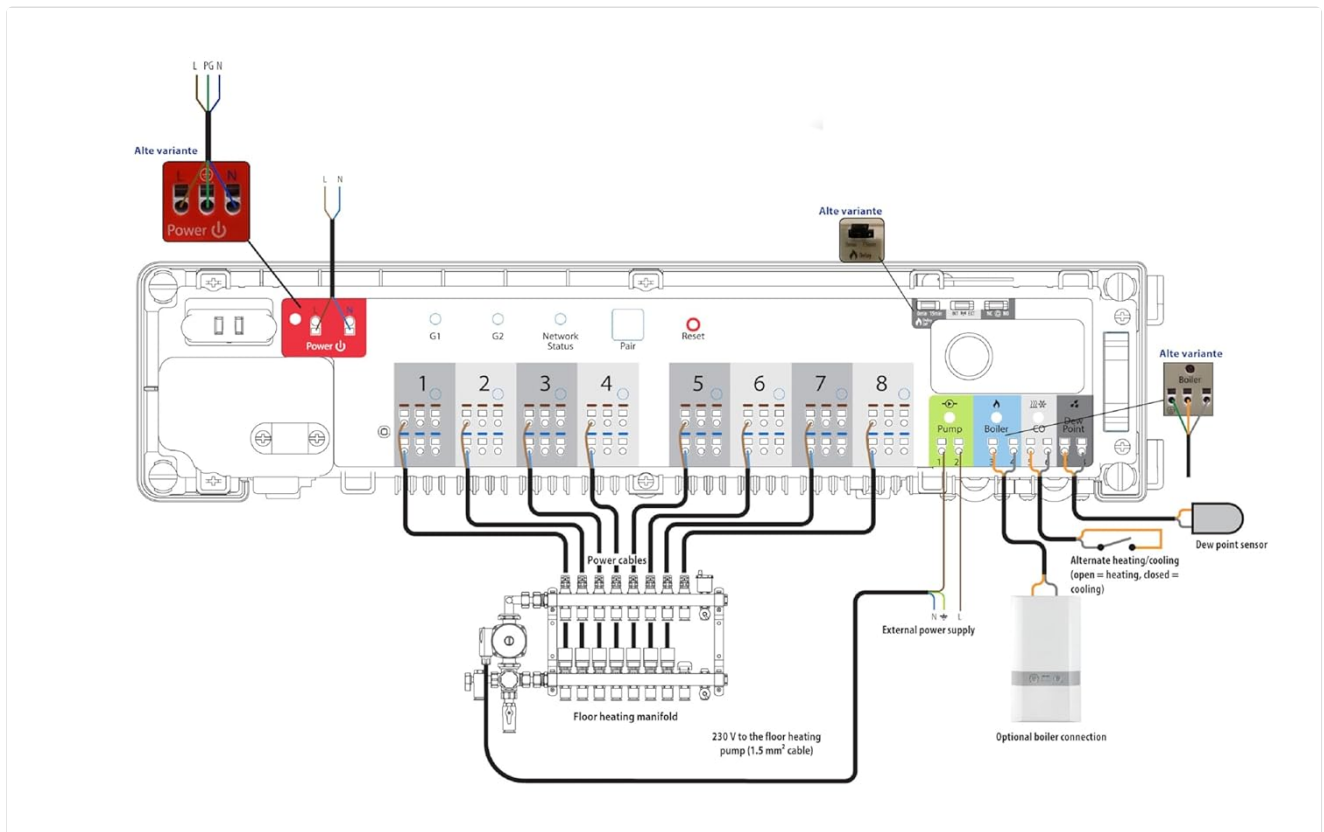


Figure 4.5: Typical Wiring Diagram for Salus Controls KL08RF. An illustrative diagram showing how to connect main power (L, N), underfloor heating manifold (230V to pump, 1.5mm² cable), optional boiler connection, and a dew point sensor to the KL08RF wiring

centre. It also indicates connections for various thermostat types (G1/G2) and zone actuators.

Wiring Steps:

1. **Power Supply:** Connect the main 230V AC power supply to the L and N terminals marked 'Power'.
2. **Zone Actuators:** Connect the thermal actuators for each heating zone to the corresponding numbered terminals (1-8). Each zone typically requires two wires.
3. **Pump:** Connect the underfloor heating pump to the terminals marked 'Pump'.
4. **Boiler:** Connect the boiler control wires to the terminals marked 'Boiler'. This connection typically signals the boiler to fire when heat is required.
5. **Dew Point Sensor (Optional):** If using, connect the dew point sensor to the designated terminals. This sensor helps prevent condensation in cooling applications.
6. **Thermostat Connections:** Connect your iT600 series wireless thermostats to the system. The KL08RF communicates wirelessly with these thermostats via the CO10RF USB coordinator.

4.3 Wireless Pairing (iT600 System)

The KL08RF acts as a receiver for wireless signals from iT600 series thermostats. The CO10RF USB coordinator facilitates this communication.

1. Ensure the CO10RF USB coordinator is securely inserted into the USB port on the KL08RF.
2. Follow the pairing instructions provided with your specific iT600 thermostats to link them to the KL08RF wiring centre. This typically involves putting both devices into a pairing mode.
3. Once paired, the thermostats will wirelessly send heating demands to the KL08RF, which will then activate the corresponding zone actuators, pump, and boiler.

5. OPERATING THE KL08RF

5.1 Indicator Lights

The KL08RF features several LED indicators to provide status information:

- **Power LED:** Illuminates when the unit is receiving power.
- **Network Status LED:** Indicates the status of the wireless network (e.g., solid for connected, flashing for searching).
- **Pair LED:** Used during the pairing process with thermostats.
- **Zone LEDs (1-8):** Each LED illuminates when its corresponding zone is active and calling for heat.
- **Pump LED:** Illuminates when the pump output is active.
- **Boiler LED:** Illuminates when the boiler output is active.

5.2 Basic Operation

Once installed and paired, the KL08RF operates automatically based on the demands from the connected iT600 thermostats. When a thermostat calls for heat in a specific zone, the KL08RF will:

- Activate the actuator for that zone.
- Activate the heating pump.
- Signal the boiler to fire (if connected).

The system will continue to operate until the thermostat's setpoint is reached or the heating demand is cancelled.

6. MAINTENANCE

The Salus Controls KL08RF wiring centre requires minimal maintenance. Follow these guidelines:

- Periodically inspect the wiring connections to ensure they remain secure.
- Keep the unit clean and free from dust. Use a soft, dry cloth for cleaning. Do not use abrasive cleaners or solvents.
- Ensure the ventilation slots (if any) are not obstructed to prevent overheating.

7. TROUBLESHOOTING

If you experience issues with your KL08RF wiring centre, refer to the following common problems and solutions:

Problem	Possible Cause	Solution
No power to the unit (Power LED off)	No mains power; loose wiring connection; blown fuse/tripped breaker.	Check mains power supply. Verify wiring connections. Check household fuse box/circuit breaker.
Thermostat not communicating with KL08RF	Thermostat not paired; CO10RF USB coordinator not inserted or faulty; wireless interference; out of range.	Re-pair the thermostat. Ensure CO10RF is correctly inserted. Relocate devices to reduce interference. Check distance between devices.
Zone not heating (Zone LED off when it should be on)	Faulty actuator; wiring issue to actuator; thermostat not calling for heat.	Check actuator functionality. Verify wiring to the actuator. Check thermostat settings and battery.
Pump or Boiler not activating	Wiring issue to pump/boiler; pump/boiler fault; no zone calling for heat.	Verify pump/boiler wiring. Check pump/boiler for independent operation. Ensure at least one zone is calling for heat.

If the problem persists after attempting these solutions, please contact Salus Controls technical support.

8. SPECIFICATIONS

- **Model Number:** 132801
- **Product Name:** KL08RF Wireless Wiring Centre
- **Brand:** Salus Controls
- **Zones:** 8 (Wireless)
- **Power Supply:** 230V AC, 50Hz
- **Dimensions (L x W x H):** Approximately 362 x 93 x 69.3 mm (50 x 40 x 18 cm as per product data)
- **Weight:** Approximately 9.07 g (as per product data)
- **Communication:** Wireless (via CO10RF USB Coordinator)
- **Device ID (CO10RF example):** 001E5E09090A17E9
- **First Available:** January 15, 2020
- **Manufacturer Discontinued:** No

9. WARRANTY AND SUPPORT

9.1 Warranty Information

The Salus Controls KL08RF Wireless Wiring Centre typically comes with a **5-year warranty** from the date of purchase. Please retain your proof of purchase for warranty claims. The warranty covers defects in materials and workmanship under normal use. It does not cover damage caused by improper installation, misuse, accidents, or unauthorized modifications.

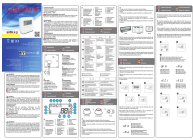
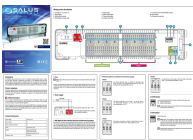
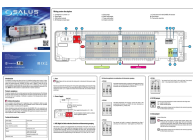
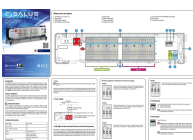


9.2 Technical Support

For technical assistance, troubleshooting beyond this manual, or warranty inquiries, please contact Salus Controls customer support. Refer to the official Salus Controls website for the most up-to-date contact information and support resources.

Website: www.salus-controls.com

© 2023 Salus Controls. All rights reserved. Information in this manual is subject to change without notice.

Related Documents - KL08RF (132801)

	<p>SALUS HTRS-RF(30) Wireless Digital Room Thermostat Installation Guide</p> <p>Comprehensive guide for installing and pairing the SALUS HTRS-RF(30) wireless digital room thermostat with iT600 series devices. Learn about online and offline modes, button functions, and setup procedures for heating systems.</p>
	<p>SALUS Controls KL08NSB 8-Zone Wiring Centre: Installation and Operation Manual</p> <p>Comprehensive guide to the SALUS Controls KL08NSB 8-zone wiring centre, covering installation, technical specifications, and operation for underfloor heating systems. Learn how to connect thermostats, actuators, boilers, and pumps.</p>
	<p>SALUS KL08NSB 24V Wiring Centre for Underfloor Heating Systems</p> <p>Comprehensive guide to the SALUS KL08NSB 24V 8-zone wiring centre, designed for underfloor heating systems. Details installation, technical specifications, wiring connections for thermostats and actuators, boiler and pump control, and advanced features like NSB and delay timers.</p>
	<p>SALUS KL08NSB 24V Wiring Centre: Installation, Wiring, and Operation Guide</p> <p>Detailed guide for the SALUS KL08NSB 24V 8-zone wiring centre. Covers technical specifications, product compliance, safety information, component descriptions, thermostat connections, and step-by-step installation instructions for underfloor heating systems.</p>
	<p>SALUS RM-16A Relay Module User Guide</p> <p>This guide provides instructions and connection diagrams for the SALUS RM-16A relay module, detailing its use with various SALUS products and other heating system components.</p>
	<p>SALUS HTR-RF(20) Wireless Dial Thermostat Quick Guide</p> <p>This quick guide provides essential information for installing, configuring, and pairing the SALUS HTR-RF(20) wireless dial thermostat for underfloor heating systems. It covers online and offline setup methods, LED indicators, jumper settings, and troubleshooting.</p>