

## KUFATEC 40019

# Kufatec 40019 Coding Interface: Start-Stop Deactivation User Manual

## 1. PRODUCT OVERVIEW

---

The Kufatec 40019 Coding Interface is designed to enable permanent activation or deactivation of the start-stop function in compatible Audi, VW, Seat, and Skoda vehicles. This device connects to your vehicle's On-Board Diagnostics (OBD) interface, allowing for simple and reversible control over the start-stop system.

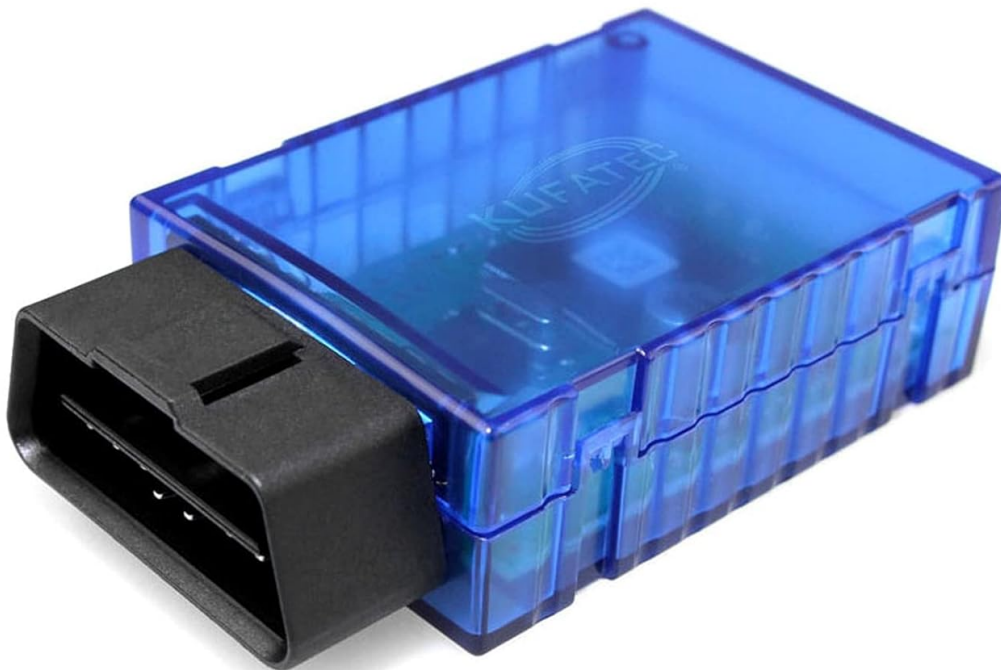


Image 1: Front view of the Kufatec 40019 Coding Interface, showing the OBD connector.



Image 2: Side view of the Kufatec 40019 Coding Interface, showing the transparent blue casing.

## 2. SETUP

---

The Kufatec 40019 Coding Interface is designed for straightforward setup. Follow these steps to prepare the device for use:

1. **Locate the OBD-II Port:** Identify the OBD-II diagnostic port in your vehicle. This port is typically located under the dashboard, near the steering wheel. Consult your vehicle's owner's manual if you cannot find it.
2. **Ensure Vehicle is Off:** Before connecting the interface, ensure your vehicle's ignition is switched off.
3. **Connect the Interface:** Carefully plug the Kufatec 40019 Coding Interface into the vehicle's OBD-II port. Ensure a secure connection.
4. **Turn On Ignition:** Turn your vehicle's ignition to the 'ON' position (do not start the engine unless instructed by the device or vehicle). The device will then begin the coding process.

## 3. OPERATING INSTRUCTIONS

---

The Kufatec 40019 Coding Interface functions as a toggle for the start-stop system. It can be used repeatedly on the same vehicle to switch the start-stop function on or off. The interface is designed for one specific vehicle and cannot be used on multiple vehicles.

- **First Use:** Connect the dongle to the OBD interface. The start-stop function will be deactivated.
- **Second Use:** Connect the dongle again. The start-stop function will be activated.
- **Subsequent Uses:** Each subsequent connection of the dongle will toggle the start-stop function between deactivated and activated states.

**Note:** After successful coding, the start-stop function is permanently switched off or on as per the last operation. However, the indicator lamp on the factory switch for activating or deactivating the start-stop system will remain off, regardless of the dongle's setting.

## 4. COMPATIBILITY

---

The Kufatec 40019 Coding Interface is compatible with a range of Audi, VW, Seat, and Skoda models. Please verify your vehicle's model year and platform for full compatibility.

### Compatible Models:

- **VW:** Arteon 3H\*, Golf 7 VII\*, Tiguan AD1\*, Touran 5T\*, Passat B8\*, Polo AW1\*, T-Cross C11\*, T-Roc A11\*, T6 (up to model year 2018)
- **Seat:** Arona KJ7, Ibiza KJ1, Leon 5F, Ateca KH7
- **Skoda:** Octavia 5E\*, Scala NW1, Superb 3V, Karoq NU7, Kodiaq NS7
- **Audi:** A3 8V\*, TT 8S (FV), A4 8K (from model year 2013), A5 8T (from model year 2012), Q2 GA\*, Q3 F3\*, Q5 8R (from model year 2013), A4 8W, A5 F5, A6 4G, A6 4A (up to model year 2018), A7 4G, A7 4K (up to model year 2018), A8 4H, A8 4N (up to model year 2018), Q5 FY, Q7 4M, Q8 4M (up to model year 2018)

### Important Compatibility Notes:

- **MQB Vehicles:** For MQB vehicles from model year 2020 onwards, compatibility is on request. The interface currently works up to model year 2019. Model year 2020 typically begins from August 2019.
- **MLB Vehicles:** For MLB vehicles (A4 8W, A5 F5, Q5 FY, Q7 4M, Q8 4M up to model year 2018), it is mandatory that the air conditioning is switched on (AC engaged). Otherwise, the engine may switch off when the function is active and the vehicle is stationary.

## 5. IMPORTANT NOTES

---

- The interface can be used repeatedly for **one specific vehicle only**.
- The function is not permanently disabled but can always be reactivated or deactivated with the dongle.
- When using the dongle, the fuel consumption and CO2 emissions of your vehicle may no longer comply with the mandatory specifications of the car manufacturer or dealer.

## 6. TROUBLESHOOTING

---

If you encounter issues with the Kufatec 40019 Coding Interface, consider the following:

- **No Response:** Ensure the dongle is securely plugged into the OBD-II port. Verify the vehicle's ignition is in the 'ON' position.
- **Incorrect Functionality:** Double-check your vehicle's compatibility with the device, especially regarding

model year and platform (MQB/MLB). Refer to the compatibility section.

- **MLB Vehicle Specific Issue:** If you have an MLB vehicle and the engine switches off unexpectedly, ensure the air conditioning (AC) is switched on.
- **Persistent Issues:** If problems persist, disconnect the device, turn off the ignition, wait a few minutes, and then retry the setup process.

## 7. TECHNICAL SPECIFICATIONS

Specification	Detail
Manufacturer	KUFATEC
Manufacturer Reference	40019
ASIN	B01LIM3DFW
Package Dimensions	22.86 x 15.49 x 4.32 cm
Item Weight	180 g
First Available Date	January 15, 2020
Operating Mode	ON-OFF
Current	4 Ampere
Contact Type	Normally Open
Connector Type	OBD
Switching Type	DIP Switch
Terminal	Blade
Material	ABS
Circuit Type	1-way
Contact Material	Copper
Guaranteed Software Updates Until	Unknown

## 8. WARRANTY AND SUPPORT

Warranty information for the Kufatec 40019 Coding Interface is typically provided by the manufacturer at the time of purchase. Please refer to your purchase documentation or the official KUFATEC website for detailed warranty terms and conditions.

For technical support, product inquiries, or assistance with troubleshooting beyond the scope of this manual, please contact KUFATEC customer service directly through their official channels. Ensure you have your product model number (40019) and purchase details available when seeking support.

