

[Manuals.plus](#) /

> [KIZEN](#) /

> Kizen Outdoor Solar Lantern (Model: Lantern_Solar) Instruction Manual

KIZEN Lantern_Solar

Kizen Outdoor Solar Lantern Instruction Manual

Brand: KIZEN | Model: Lantern_Solar

INTRODUCTION

Thank you for choosing the Kizen Outdoor Solar Lantern. This versatile and portable device is designed to provide reliable illumination and power in various outdoor and emergency situations. Featuring solar and USB charging, multiple light modes, and a power bank function, it is an essential tool for camping, hiking, power outages, and everyday use.



TAKE CHARGE OF YOUR ADVENTURE

**ARE YOU AN OFF-GRIDDER OR A TECHIE?
SOLAR & USB CHARGING LETS YOU CHOOSE BOTH**

Image: The Kizen Outdoor Solar Lantern showcasing its compact, collapsed form and its fully extended lantern mode, emphasizing its portability and dual functionality.

SETUP

Unpacking and Initial Charge

1. Remove the Kizen Outdoor Solar Lantern from its packaging.
2. It is recommended to fully charge the lantern before first use. You can charge it via solar energy or the included USB cable.

Expanding and Collapsing the Lantern

The lantern features a collapsible design for compact storage and versatile use.

- **To Expand:** Gently pull the top piece upwards until the accordion-style body is fully extended and locks into place.
- **To Collapse:** Gently push the top piece downwards until the body is fully compressed. Ensure it locks securely for flashlight mode or compact storage.



Image: A visual guide demonstrating how to expand the Kizen Outdoor Solar Lantern from its compact, hockey-puck size to its full lantern height, with measurements.

OPERATING THE LANTERN

Light Modes

The lantern offers multiple light modes for different needs. Press the power button located on the side to cycle through the modes:

1. **Low:** Provides a soft, ambient light for extended battery life.
2. **High:** Offers maximum brightness for clear visibility.
3. **SOS:** A flashing emergency signal.
4. **Off:** Turns the light off.

Flashlight Function

When the lantern is fully collapsed, the top LED acts as a directional flashlight. Press the power button to activate and cycle through its brightness settings.

Lantern Function

When fully expanded, the lantern provides 360-degree illumination. Use the integrated handle for carrying or hanging the lantern in your tent or other locations.



Image: The Kizen Outdoor Solar Lantern illustrating its three distinct light modes: High, Low, and Flashing SOS, as well as

its compact flashlight capability.

HIKE & HANG

**HANDLE DESIGNED FOR
CARRYING AND HANGING**

TUCK HANDLE AWAY WHEN NOT IN USE

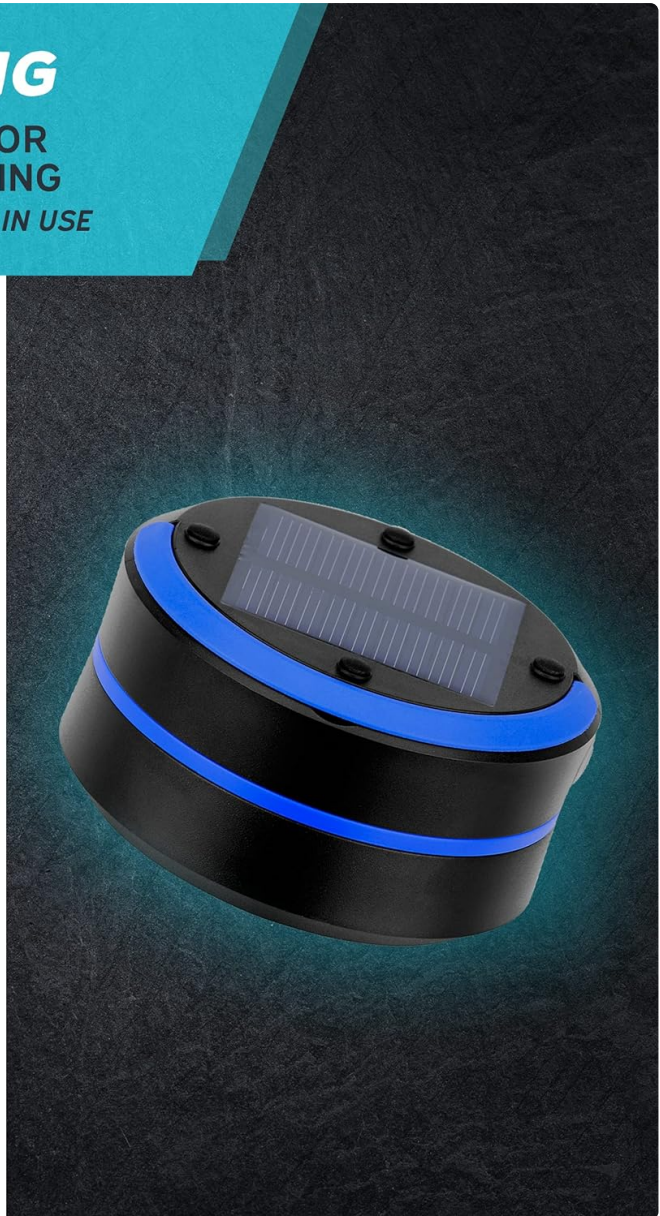


Image: The Kizen Outdoor Solar Lantern in use, showing how it can be carried by its handle or hung from a hook or branch, highlighting its adaptability for various outdoor settings.

CHARGING THE LANTERN AND OTHER DEVICES

Solar Charging

The lantern features a built-in solar panel on the top. Place the lantern in direct sunlight to charge the internal battery. A red indicator light will illuminate when charging via solar power.

USB Charging

For faster charging or when sunlight is unavailable, use the provided USB cable. Plug the micro-USB end into the lantern's charging port and the USB-A end into a compatible USB power source (e.g., wall adapter, power bank). A full charge typically takes approximately 4 hours.

Power Bank Function

The Kizen Outdoor Solar Lantern can also serve as a portable power bank to charge your mobile devices. Open the protective cover on the side to reveal the USB-A output port. Connect your device's charging

cable to this port to begin charging.



SOLAR & USB CHARGING

FULL CHARGE IN 4 HOURS



**DOUBLES AS A
PORTABLE PHONE
CHARGER**



Image: The Kizen Outdoor Solar Lantern highlighting its solar panel for charging and the USB port for alternative charging, demonstrating its dual power input capabilities.



Image: The Kizen Outdoor Solar Lantern actively charging a smartphone, showcasing its practical use as a portable power bank for mobile devices.

MAINTENANCE

- **Cleaning:** Wipe the lantern with a soft, damp cloth. Do not use abrasive cleaners or solvents.
- **Storage:** Store the lantern in its collapsed state in a cool, dry place away from direct sunlight when not in use for extended periods.
- **Water Resistance:** The lantern is water-resistant. Avoid submerging it in water. Ensure the USB port cover is securely closed to maintain water resistance.

TROUBLESHOOTING

- **Light Not Turning On:** Ensure the battery is charged. Connect to a USB power source or place in direct sunlight.
- **Device Not Charging:** Check that the lantern has sufficient battery charge. Ensure the charging cable is properly connected to both the lantern and your device.

- **Solar Charging Indicator Not On:** Ensure the solar panel is exposed to direct sunlight. Charging efficiency may vary based on sunlight intensity.

SPECIFICATIONS

Feature	Detail
Brand	KIZEN
Model	Lantern_Solar
Material	Plastic
Power Source	Solar Powered, USB
Light Source Type	LED
Battery Life	Up to 10 Hours (Low Mode)
Charging Time (USB)	Approx. 4 Hours
Product Dimensions (Collapsed)	3.35"L x 3.35"W x 1.8"H
Product Dimensions (Extended)	3.35"L x 3.35"W x 4.7"H
Item Weight	0.4 Pounds (6.4 ounces)
Water Resistance Level	Water Resistant

WARRANTY AND SUPPORT

For warranty information or product support, please contact Kizen customer service through the retailer where the product was purchased or visit the official Kizen website. Please retain your proof of purchase for any warranty claims.