

Manuals+

[Q & A](#) | [Deep Search](#) | [Upload](#)

manuals.plus /

- › [Shark](#) /
- › [Shark S3973D Steam Mop Pro Lift-Away User Manual](#)

Shark S3973D

Shark S3973D Steam Mop Pro Lift-Away User Manual

Model: S3973D

1. INTRODUCTION

The Shark S3973D Steam Mop Pro Lift-Away is a versatile cleaning system designed for comprehensive home sanitization. This unit functions as both an upright steam mop for hard floors and a detachable handheld steam cleaner for various above-floor surfaces. It utilizes steam to clean and sanitize without the need for harsh chemicals.

This manual provides instructions for safe operation, assembly, use, and maintenance of your Shark S3973D Steam Mop Pro Lift-Away.





Image: The Shark S3973D Steam Mop Pro Lift-Away, showing its upright steam mop form and the detachable handheld unit.

2. IMPORTANT SAFETY INSTRUCTIONS

When using your steam mop, basic safety precautions should always be observed to reduce the risk of fire, electric shock, or injury. Please read all instructions before using this appliance.

- Always ensure the appliance is unplugged from the electrical outlet before filling or emptying the water tank, or performing any maintenance.
- Use only distilled or demineralized water in the water tank to prevent mineral buildup and extend the life of the appliance.
- Do not use the steam mop on unsealed hardwood, unglazed ceramic, or waxed surfaces, as steam can damage these finishes.
- Keep the steam mop and its accessories out of reach of children and pets.
- Never direct steam towards people, animals, or electrical outlets.
- Do not immerse the steam mop in water or other liquids.
- Use only manufacturer-recommended accessories and attachments.

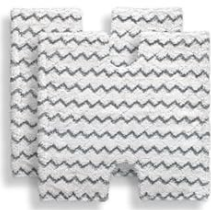
- If the power cord is damaged, it must be replaced by the manufacturer, its service agent, or similarly qualified persons to avoid a hazard.
- Always allow the appliance to cool completely before storing.

3. WHAT'S INCLUDED

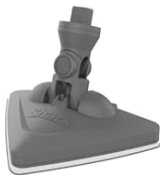
Your Shark S3973D Steam Mop Pro Lift-Away package includes the following components:

- 1x Steam Mop with Detachable Handheld Steamer
- 2x Double-sided Dirt-Grip Pads
- 1x Fill Flask
- 1x Accessory Hose
- 1x Garment Steamer Attachment
- 1x Small Above-Floor Pocket Tool + Pad
- 1x Triangle Dirt Grip Pad (with nozzle)

What's in the box:



2x Double-Sided Dirt Grip[®] Pads



1x Triangle Dirt Grip Pad (with nozzle)



Fill Flask



Accessory Hose



Garment Steamer



Small Above-Floor Pocket Tool & Pad



Image: All components included in the Shark S3973D package.

4. ASSEMBLY

Follow these steps to assemble your steam mop:

1. **Attach the Mop Handle:** Insert the upper handle into the main body of the steam mop until it clicks securely into place.
2. **Attach the Mop Head:** Align the mop head with the main body and push it on until it locks.
3. **Attach Dirt Grip Pads:** Place a Dirt Grip pad on the floor with the gray scrubbing strips facing up. Align the mop head over the pad and press down firmly to secure the hook-and-loop fasteners.
4. **Detaching the Handheld Steamer:** To use the handheld steamer, press the release button located on the main unit and lift the handheld portion away from the mop body.
5. **Attaching Handheld Accessories:** Connect the accessory hose to the handheld steamer. Then, attach desired cleaning tools (e.g., garment steamer, small above-floor pocket tool, triangle pad) to the end of the hose or directly to the handheld unit if applicable.



Detachable handheld cleaner

Designed for steaming around your whole home.

Image: The handheld unit detaching from the main steam mop body.

5. OPERATION

5.1 Filling the Water Tank

1. Ensure the steam mop is unplugged.
2. Open the water tank cap.
3. Use the provided fill flask to pour distilled or demineralized water into the tank. Do not overfill.
4. Securely close the water tank cap.

5.2 Using the Steam Mop (Floor Cleaning)

1. Ensure a Dirt Grip pad is securely attached to the mop head.
2. Plug the power cord into a grounded electrical outlet.
3. Wait for the unit to heat up (indicator light will change).
4. Select your desired steam mode (Light, Normal, or Deep) using the control buttons on the handle.
5. Begin mopping your sealed hard floors with a forward and backward motion.
6. For sanitization, slowly and evenly pass the mop over the area. Refer to the owner's guide for specific sanitization instructions.



Chemical-free sanitization*

Removes 99.9% of common household bacteria† using just water.

*See sanitization instructions in Owner's Guide for important details on sanitizing floors. Sanitization studies were conducted under controlled test conditions. See the Owner's Guide for details on testing.

†Demonstrated to be effective against *Pseudomonas aeruginosa*, *Staphylococcus aureus*, *Escherichia coli*, *Salmonella enterica* (typhi), and *Klebsiella pneumoniae* when used as directed.

Image: The Shark S3973D steam mop in use, highlighting its chemical-free sanitization capability.

5.3 Steam Modes and Steam Blaster Technology

The S3973D offers three steam modes and a Steam Blaster feature for targeted cleaning:

- **Light Mode:** For quick cleanups and delicate surfaces.
- **Normal Mode:** Ideal for everyday cleaning tasks.
- **Deep Mode:** Provides maximum steam for stubborn messes and heavy-duty cleaning.
- **Steam Blaster:** Press the Steam Blaster button to release a concentrated burst of steam, effective for tackling tough, stuck-on stains.



Convenient controls for all your cleaning needs

Easily switch between steam modes or trigger
the Steam Blaster® with the touch of a button.

Image: Control panel illustrating the three steam modes.



Tackles tough stuck-on messes

Targeted steam power where you need it most.

Image: The Steam Blaster feature targeting a tough stain on the floor.

5.4 Using the Handheld Steamer (Above-Floor Cleaning)

1. Detach the handheld steamer from the main unit.
2. Attach the accessory hose and desired cleaning tool (e.g., garment steamer, small above-floor pocket tool, triangle pad).
3. Plug in the unit and wait for it to heat up.
4. Direct steam towards the surface to be cleaned. Use caution and test on an inconspicuous area first.
5. The handheld steamer is suitable for cleaning kitchen counters, upholstery, garments, car interiors, and other sealed surfaces.



Triangular nozzle design

Effortlessly cleans edges and corners,
and fits into tight spaces with precision.

Image: The handheld steamer with a triangular nozzle for cleaning edges and corners.

6. MAINTENANCE

6.1 Cleaning Dirt Grip Pads

The double-sided Dirt Grip pads are machine-washable and reusable. For best results:

- Remove pads from the mop head after each use.
- Machine wash pads separately with warm water using liquid detergent.
- Do not use bleach or fabric softeners, as these can damage the pads.
- Tumble dry on low heat or air dry.



Machine-washable Dirt Grip® pads

Shark's double-sided microfiber mopping pads are absorbent, reusable, and machine-washable.

Image: Machine-washable Dirt Grip pads for easy cleaning.



Double-sided cleaning

Use both sides of the mop pad by flipping the head to extend your cleaning session.

Image: Demonstrating the double-sided cleaning capability of the Dirt Grip pads.

6.2 Storing the Steam Mop

After use, ensure the unit has cooled down and the water tank is empty. Store the steam mop in a dry, protected area.

7. TROUBLESHOOTING

Problem	Possible Cause	Solution
No steam or very little steam.	Water tank is empty. Unit not plugged in or not powered on. Steam nozzle clogged.	Refill water tank. Ensure unit is properly plugged in and power button is pressed. Contact customer support if nozzle is clogged.

Problem	Possible Cause	Solution
Mop leaves water on the floor.	Pad is oversaturated or dirty. Steam mode is too high for the surface.	Change or clean the Dirt Grip pad. Select a lower steam setting.
Unit not heating up.	Power cord not securely plugged in. Circuit breaker tripped.	Check power connection. Reset circuit breaker if necessary.

8. SPECIFICATIONS

- **Model Name:** Shark Lift-Away Pro Steam Pocket Mop (S3973D)
- **Brand:** Shark
- **Wattage:** 1500 watts
- **Voltage:** 110-120 Volts
- **Item Weight:** 7 Pounds (approximately 3.18 kg)
- **Tank Volume:** 500 Milliliters (0.5 Liters)
- **Product Dimensions:** 12"D x 12"W x 51.2"H (approximately 30.5cm D x 30.5cm W x 130cm H)
- **Special Features:** Lightweight, Steam Control, Detachable Handheld Steamer
- **Surface Recommendation:** Sealed Hard Floors (Hardwood, Tile, Laminate, Marble, Stone, Vinyl)
- **Color:** Gray
- **UPC:** 622356544191

9. WARRANTY AND SUPPORT

For warranty information, please refer to the warranty card included with your product or visit the official Shark website. For customer support, replacement parts, or additional accessories, please contact Shark customer service directly.

Online Support: www.sharkclean.com

