

EasySMX ESM-9013-Blue-EU

EasySMX 9013Pro Wireless Controller User Manual

Model: ESM-9013-Blue-EU

INTRODUCTION

The EasySMX 9013Pro Wireless Controller is a versatile gaming peripheral designed for a wide range of platforms. It offers three connection methods: 2.4GHz Wireless, Bluetooth, and Wired, providing flexibility for various gaming setups. Key features include Hall Effect triggers for precise control, dual vibration for immersive feedback, and a convenient Turbo function for enhanced gameplay. With a long-lasting 600mAh battery, this controller ensures extended play sessions.



Front view of the EasySMX 9013Pro Wireless Controller, showcasing its black and blue design with illuminated central button.

What's Included in the Box

Upon opening your EasySMX 9013Pro Wireless Controller package, you should find the following items:

- 1 x EasySMX 9013Pro Gaming Controller
- 1 x USB Receiver (for 2.4GHz wireless connection)
- 1 x Type-C Charging Cable
- 1 x User Manual (this document)

What's Included in Box



All components included in the EasySMX 9013Pro Wireless Controller package.

SETUP

The EasySMX 9013Pro controller offers multiple connection options for broad compatibility.

Connection Modes

The controller supports three primary connection methods:

1. **2.4GHz Wireless Connection:** Recommended for PC and PS3 for stability and low latency. Insert the USB receiver into an available USB port on your device. The controller will automatically connect.
2. **Bluetooth Connection:** Ideal for Android phones/tablets, iPhones/iPads, Switch, and Steam Deck. Enable Bluetooth on your device and pair with the controller.
3. **Wired Connection:** Connect the controller directly to your device using the provided Type-C charging cable. This method offers a stable, lag-free connection and simultaneously charges the controller.

3 Connection Modes

2.4G Connection



Bluetooth



Wired Connection



Visual representation of the three available connection modes for the controller.

Supported Operating Systems

The EasySMX 9013Pro Wireless Controller is universally compatible with a wide range of operating systems and devices:

- Windows PC/Laptop (Windows XP, Windows 98, Windows Me, Windows 2000, Windows 7, Windows 8, Windows 8.1, Windows 10)
- PS3
- Android Phones & Tablets (Android 9.0+)
- iPhone/iPad (iOS 13+)

- Nintendo Switch
- Steam Deck
- Tesla

Multi Platform Gaming Controller



The controller's broad compatibility across various gaming platforms.

OPERATING THE CONTROLLER

Precise Hall Effect Triggers

The controller features Hall Effect triggers, which utilize magnetic sensors for highly accurate and responsive input. This

technology ensures a comfortable feel, long button life, and minimal latency, enhancing your gaming accuracy.

Precise and Responsive Hall Trigger



Detailed view of the Hall Effect trigger technology for enhanced precision.

Dual Vibration Feedback

Experience immersive gameplay with the controller's dual vibration motors. These motors provide tactile feedback for in-game actions, allowing you to feel every crash, explosion, and impact directly in your hands.



Dual Vibration

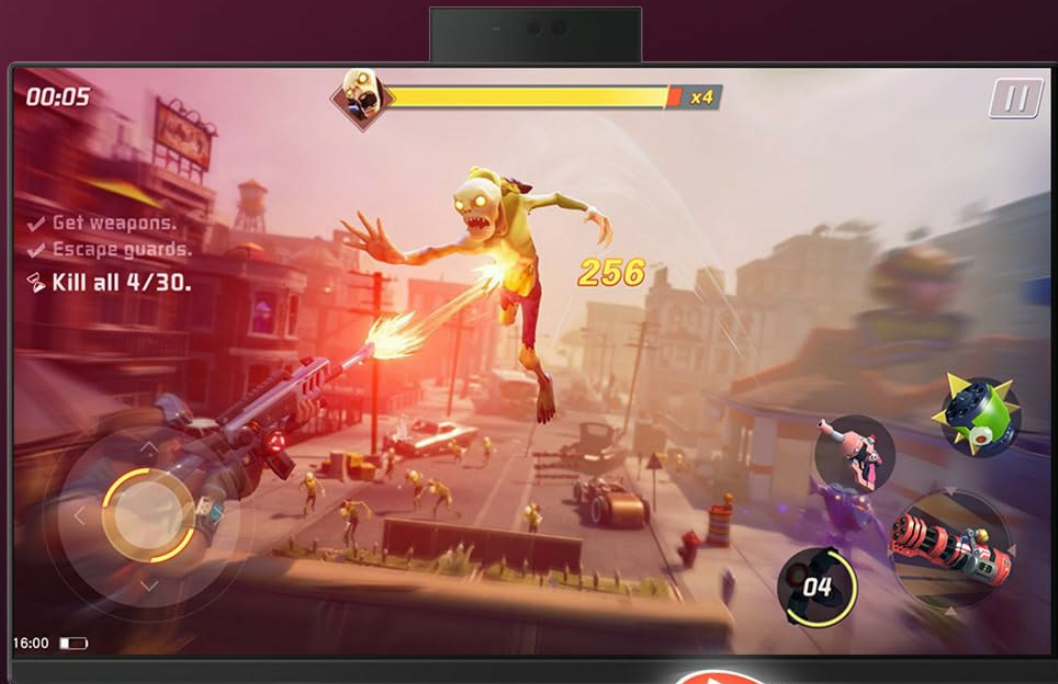
Feel each crash right
in your palms
provide you a immersive
gaming experience

The dual vibration feature provides immersive tactile feedback during gameplay.

Turbo Function

The built-in Turbo function allows you to customize any button for rapid-fire actions. This feature is particularly useful for games requiring quick, repeated button presses, giving you a competitive edge.

Turbo Function



No longer need to press
the button repeatedly.



The Turbo function enables rapid, customized button actions for faster gameplay.

Battery Life and Charging

The controller is equipped with a 600mAh large-capacity battery, providing up to 12 hours of playtime on a single charge. Charging typically takes about 2 hours. You can charge the controller using the provided Type-C cable by connecting it to a USB power source.

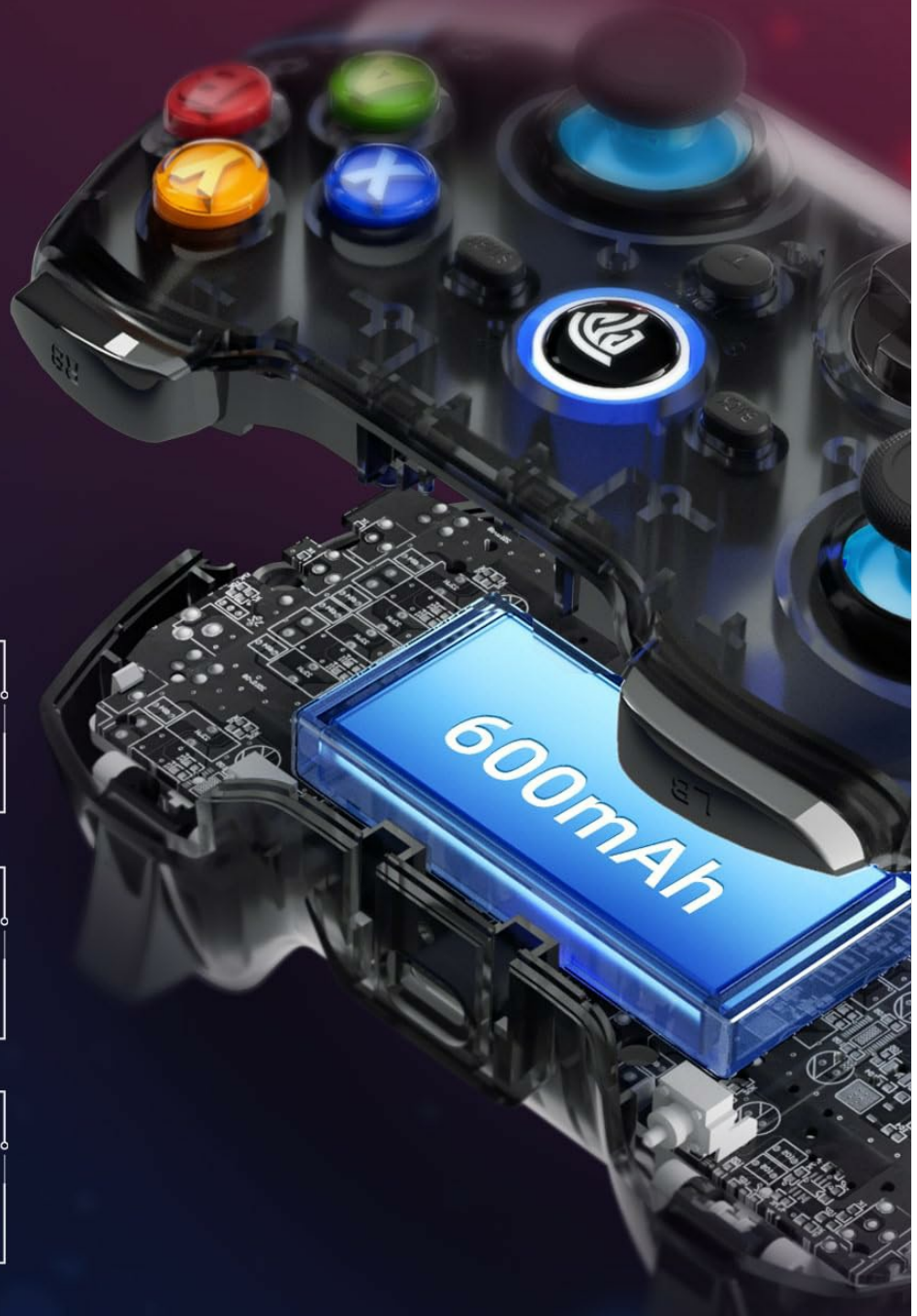
Long Time Battery Life

Built-in 600mAh battery, charging for 2 hours can extend 8-10 hours of using time.

8-10H 
Playing Time

2.0H 
Charging Time

600mAh
Capacity



Information on the controller's 600mAh battery capacity, playing time, and charging time.

Product Video

Your browser does not support the video tag.

Official product video demonstrating the EasySMX Wireless Game Controller's features and usage.

MAINTENANCE

Proper maintenance ensures the longevity and optimal performance of your controller.

- **Cleaning:** Use a soft, dry cloth to wipe down the controller. For stubborn dirt, slightly dampen the cloth with water or a mild cleaning solution. Avoid harsh chemicals or abrasive materials.
- **Storage:** Store the controller in a cool, dry place away from direct sunlight and extreme temperatures. If storing for an extended period, ensure the battery is partially charged (around 50%) to preserve battery health.
- **Charging:** Always use the provided Type-C charging cable or a certified equivalent. Avoid overcharging or completely draining the battery frequently.

TROUBLESHOOTING

If you encounter issues with your EasySMX 9013Pro Wireless Controller, please refer to the following common solutions:

Problem	Possible Cause	Solution
Controller not connecting/pairing.	Low battery; incorrect connection mode; interference; driver issue.	Ensure controller is charged. Verify correct connection mode (2.4GHz dongle inserted, Bluetooth enabled). Move closer to the receiver/device. Reinstall drivers if necessary.
Buttons/Joysticks unresponsive or sticky.	Physical obstruction; internal component issue; software calibration needed.	Clean around buttons/joysticks. Check for physical damage. Calibrate the controller through your device's settings.
Vibration not working.	Vibration feature disabled in game/system settings; low battery.	Check in-game and system settings to ensure vibration is enabled. Charge the controller fully.
Short battery life.	Frequent vibration; aging battery; improper charging habits.	Reduce vibration intensity if possible. Ensure full charge cycles. Avoid extreme temperatures during charging/use.

If the issue persists after trying these solutions, please contact EasySMX customer support for further assistance.

SPECIFICATIONS

Feature	Detail
Model Number	ESM-9013-Blue-EU
Connectivity	2.4GHz Wireless, Bluetooth, Wired (USB Type-C)
Wireless Range	Up to 10 meters
Compatibility	Windows PC/Laptop, PS3, Android (Phone & Tablet & TV BOX), iPhone/iPad, Switch, Steam Deck, Tesla
Triggers	Hall Effect Triggers
Vibration	Dual Vibration
Battery Capacity	600mAh Lithium Polymer
Play Time	Up to 12 hours
Charging Time	Approx. 2 hours
Product Dimensions	6.89 x 5.31 x 3.07 inches

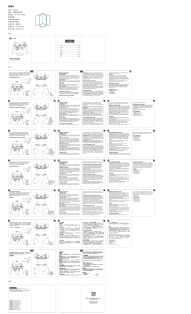


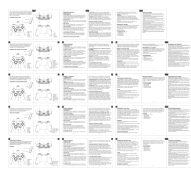
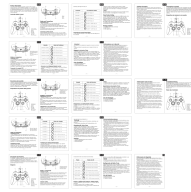
Feature	Detail
Item Weight	0.16 ounces

WARRANTY AND SUPPORT

EasySMX products are designed and manufactured to the highest quality standards. For information regarding warranty coverage and customer support, please refer to the official EasySMX website or the contact information provided in your product packaging.

A digital version of the user manual is also available for download:[Download User Manual \(PDF\)](#)

Related Documents - ESM-9013-Blue-EU

	<p>EasySMX 9013Pro Wireless Game Controller User Guide</p> <p>Comprehensive user guide for the EasySMX 9013Pro wireless game controller, detailing features like Hall Effect triggers, programmable back buttons, and multiple connection methods for PC, Switch, Android, and iOS.</p>
	<p>EasySMX ESM-9013 Wireless Game Controller Manual</p> <p>Comprehensive user guide for the EasySMX ESM-9013 wireless game controller, detailing setup, features, compatibility, and troubleshooting for PC and Android devices.</p>
	<p>EasySMX ESM-9100 Wired Game Controller User Manual and Guide</p> <p>Comprehensive guide for the EasySMX ESM-9100 Wired Game Controller, covering specifications, connection methods for PC, PS3, and Android, turbo button settings, button testing, and troubleshooting FAQs.</p>
	<p>EasySMX Bluetooth Controller User Manual</p> <p>Comprehensive user manual for the EasySMX Bluetooth Controller, detailing setup, modes, connections, turbo function, charging, resetting, and safety information for PC, Android, iOS, and Nintendo Switch.</p>
	<p>EasySMX 9100Pro Wired Game Controller User Manual</p> <p>User manual for the EasySMX 9100Pro wired game controller, detailing product features, connectivity options for PC, PS3, and Android, Turbo button functionality, and essential safety precautions.</p>



[EasySMX T37 Wireless Controller User Manual](#)

User manual for the EasySMX T37 Wireless Controller, detailing connection methods, features, troubleshooting, and specifications for use with Nintendo Switch, Android, and Windows.