

Manuals+

[Q & A](#) | [Deep Search](#) | [Upload](#)

manuals.plus /

> [Valera](#) /

> [VALERA X-Master 652.03 Professional Cordless Hair Clipper Instruction Manual](#)

Valera X-Master 652.03

VALERA X-Master 652.03 Professional Cordless Hair Clipper

Instruction Manual

1. INTRODUCTION

Thank you for choosing the VALERA X-Master 652.03 Professional Cordless Hair Clipper. This device is engineered for precision and durability, featuring diamond-sharpened Japanese steel blades. This manual provides essential information for the safe and effective use, maintenance, and troubleshooting of your hair clipper. Please read it thoroughly before first use and keep it for future reference.

2. SAFETY INFORMATION

WARNING: To reduce the risk of electric shock, injury, or fire:

- Use this appliance only for its intended household use as described in this manual.
- Do not use the appliance near water, such as in a bathtub, shower, or sink.
- Avoid direct contact of the blades with skin to prevent irritation, especially during initial uses.
- Keep the appliance away from heated surfaces.
- Never operate the appliance if it has a damaged cord or plug, if it is not working properly, or if it has been dropped or damaged.
- Do not attempt to repair the appliance yourself. Contact authorized service personnel.
- This appliance is not intended for use by persons (including children) with reduced physical, sensory or mental capabilities, or lack of experience and knowledge, unless they have been given supervision or instruction concerning use of the appliance by a person responsible for their safety.
- Children should be supervised to ensure that they do not play with the appliance.
- Unplug the appliance before cleaning or performing any maintenance.

3. PACKAGE CONTENTS

Your VALERA X-Master 652.03 package includes:

- VALERA X-Master 652.03 Hair Clipper
- 46 mm Japanese Steel Blade (pre-installed)

- Charging Station with accessory compartment
- Power Adapter
- Guide Combs: 4 mm, 8 mm, 12 mm, 16 mm, 20 mm
- Cleaning Brush
- Lubricating Oil
- Instruction Manual



Figure 3.1: Contents of the VALERA X-Master 652.03 package.

4. PRODUCT FEATURES

- **Professional Japanese Steel Blades:** Diamond-sharpened for a precise and durable cut. (Note: 10 mm and 30 mm blades can be ordered separately).
- **Vario-Cut System:** Five adjustable cutting lengths (0.8 mm, 1.3 mm, 1.8 mm, 2.4 mm, 3.0 mm) directly on the blade.
- **Cordless and Corded Operation:** Offers flexibility with 100 minutes of cordless runtime and the option to use while plugged in.
- **Universal Voltage:** 100-240V for worldwide travel use.
- **Ergonomic Design:** Comfortable to hold and use.
- **Charging Station:** Convenient storage and charging with an accessory compartment.



Figure 4.1: VALERA X-Master 652.03 Hair Clipper overview.



Figure 4.2: Vario-Cut system for adjustable cutting lengths.



Figure 4.3: Dura Blade Japanese Steel blade.

5. SETUP

5.1 Initial Charging

1. Before first use, fully charge the hair clipper for approximately 8-10 hours.
2. Connect the power adapter to the charging station.
3. Place the hair clipper into the charging station. Ensure the charging indicator light illuminates.
4. The clipper can also be used directly with the power adapter if the battery is depleted.

5.2 Attaching Guide Combs

1. Ensure the clipper is turned off.
2. Select the desired guide comb (4 mm, 8 mm, 12 mm, 16 mm, or 20 mm).
3. Align the guide comb with the clipper blade and push it firmly until it clicks into place.
4. To remove, gently pull the comb away from the blade.

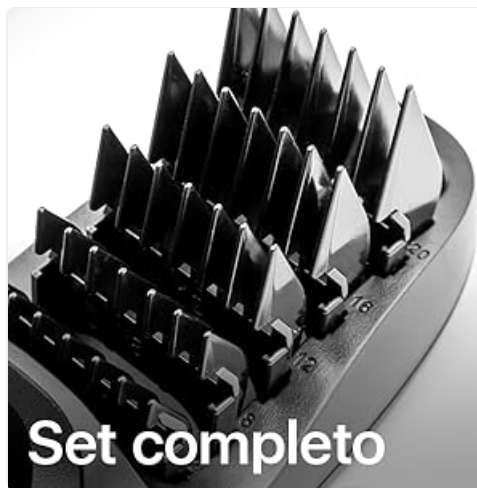


Figure 5.1: Guide combs in charging station.

6. OPERATING INSTRUCTIONS

6.1 Adjusting Cutting Length (Vario-Cut System)

1. The clipper features an integrated Vario-Cut system for fine-tuning cutting length without a comb.
2. Locate the adjustment lever on the side of the clipper.
3. Slide the lever to select one of the five cutting lengths: 0.8 mm, 1.3 mm, 1.8 mm, 2.4 mm, or 3.0 mm.
4. Ensure the desired length is securely locked before use.



Figure 6.1: Adjusting the Vario-Cut system.

6.2 Hair Cutting Techniques

1. Ensure hair is clean and dry before cutting.
2. For best results, comb the hair in the direction of growth.
3. Start with a longer guide comb or Vario-Cut setting and gradually reduce the length if desired.
4. Hold the clipper with the blade flat against the head.
5. Move the clipper slowly against the direction of hair growth.
6. Overlap strokes to ensure an even cut.
7. For detailing or shorter cuts, remove the guide comb and use the Vario-Cut system.



Figure 6.2: Demonstrating hair trimming with the clipper.



Figure 6.3: Checking haircut for evenness.

7. MAINTENANCE

7.1 Cleaning the Blades

1. Turn off and unplug the clipper from the power source.
2. Remove any attached guide comb.
3. Use the provided cleaning brush to remove loose hairs from the blades.
4. For thorough cleaning, the blade set can be detached. Refer to the diagram in the full manual for specific instructions on blade removal and reattachment.
5. Do not rinse the entire clipper under water. The blades can be carefully rinsed under running water if detached, but ensure they are completely dry before reattaching.

7.2 Lubricating the Blades

1. After each use, or at least once a month, apply a few drops of the provided lubricating oil to the blades.
2. Turn the clipper on for a few seconds to allow the oil to distribute evenly.
3. Wipe off any excess oil with a soft cloth.
4. Regular lubrication ensures optimal cutting performance and extends blade life.

7.3 Storage

- Store the clipper and its accessories in a dry place, away from direct sunlight and extreme temperatures.
- Ensure the clipper is turned off and unplugged before storing.
- Use the charging station for organized storage of the clipper and guide combs.

8. TROUBLESHOOTING

Problem	Possible Cause	Solution
Clipper does not turn on.	Battery is depleted.	Charge the clipper for at least 100 minutes or use it with the power adapter.
Poor cutting performance / pulling hair.	Blades are dull, dirty, or not lubricated.	Clean the blades thoroughly and apply lubricating oil. If performance does not improve, consider replacing the blade set.
Clipper gets hot during use.	Extended continuous use or dirty blades.	Allow the clipper to cool down. Clean and lubricate the blades. Avoid prolonged continuous operation.
Guide comb does not attach securely.	Incorrect alignment or debris.	Ensure the comb is correctly aligned and push firmly until it clicks. Check for any obstructions.

9. SPECIFICATIONS

Feature	Detail
Model Number	X-Master 652.03
Blade Material	Japanese Steel
Blade Width	46 mm

Feature	Detail
Adjustable Cutting Lengths (Vario-Cut)	0.8 mm, 1.3 mm, 1.8 mm, 2.4 mm, 3.0 mm
Guide Comb Lengths	4 mm, 8 mm, 12 mm, 16 mm, 20 mm
Power Source	Battery Powered (Cordless) / AC Adapter (Corded)
Battery Runtime	Up to 100 minutes
Dimensions (L x W x H)	4.6 x 4.5 x 17.8 cm (1.8 x 1.77 x 7 inches)
Weight	270 grams (0.6 lbs)
Universal Voltage	100-240V

10. WARRANTY AND SUPPORT

For warranty information and customer support, please refer to the warranty card included in your product packaging or visit the official Valera website.

Manufacturer: Ligo Electric SA