

PIX-LINK WR01

PIX-LINK 300Mbps WiFi Repeater User Manual

Model: WR01

1. INTRODUCTION

The PIX-LINK WR01 300Mbps WiFi Repeater is designed to extend the coverage and improve the signal strength of your existing Wi-Fi network. This device helps eliminate Wi-Fi dead zones, providing a more stable and faster wireless connection throughout your home or office. It supports both Repeater and AP (Access Point) modes, offering versatile connectivity options.



Figure 1: Front view of the PIX-LINK WR01 WiFi Repeater.

2. PRODUCT OVERVIEW

The PIX-LINK WR01 features a compact design with integrated antennas and multiple indicator LEDs for easy status monitoring. It also includes a USB port for charging, enhancing its utility as a travel companion.

2.1. Components and Indicators

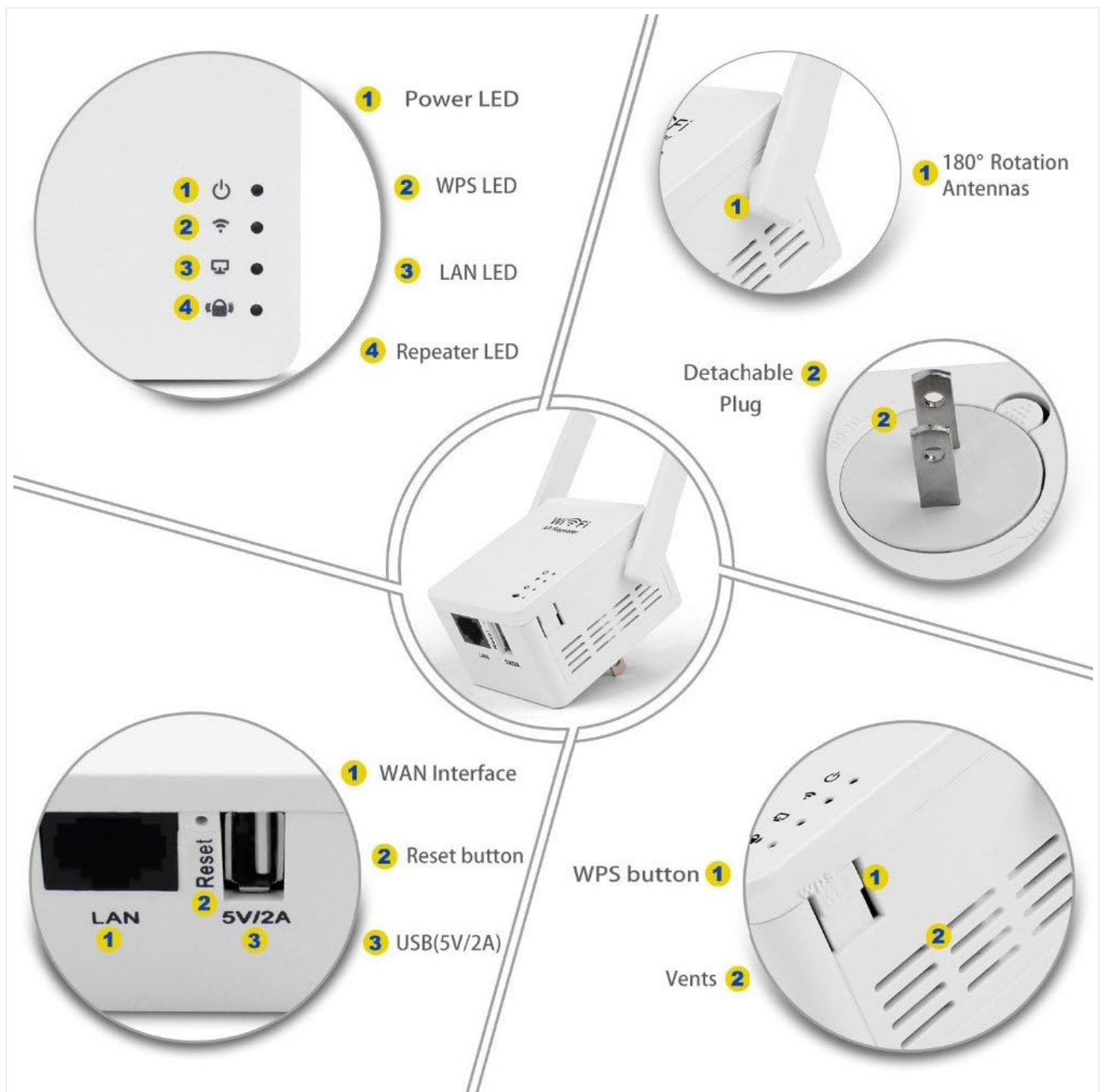


Figure 2: Detailed view of the PIX-LINK WR01 components and indicators.

- **Power LED:** Indicates if the device is powered on.
- **WPS LED:** Illuminates during WPS connection attempts.
- **LAN LED:** Indicates activity on the LAN port.
- **Repeater LED:** Shows the status of the repeater function.
- **180° Rotation Antennas:** Adjustable antennas for optimal signal reception.
- **Detachable Plug:** Allows for compact storage and travel.
- **WAN Interface:** Port for connecting to a modem or router in AP mode.
- **Reset Button:** Used to restore factory default settings.
- **USB (5V/2A) Port:** For charging external devices.
- **WPS Button:** For quick and secure connection setup with WPS-enabled routers.
- **Vents:** For heat dissipation.

3. SETUP

The PIX-LINK WR01 is designed for easy installation. You can set it up using your smartphone, tablet, or laptop, or by utilizing the WPS function.

3.1. Initial Placement

For optimal performance, place the repeater in a location that is roughly halfway between your main router and the area where you need improved Wi-Fi coverage. Avoid placing it too close to either the router or the device you are trying to connect, as this can hinder its effectiveness.

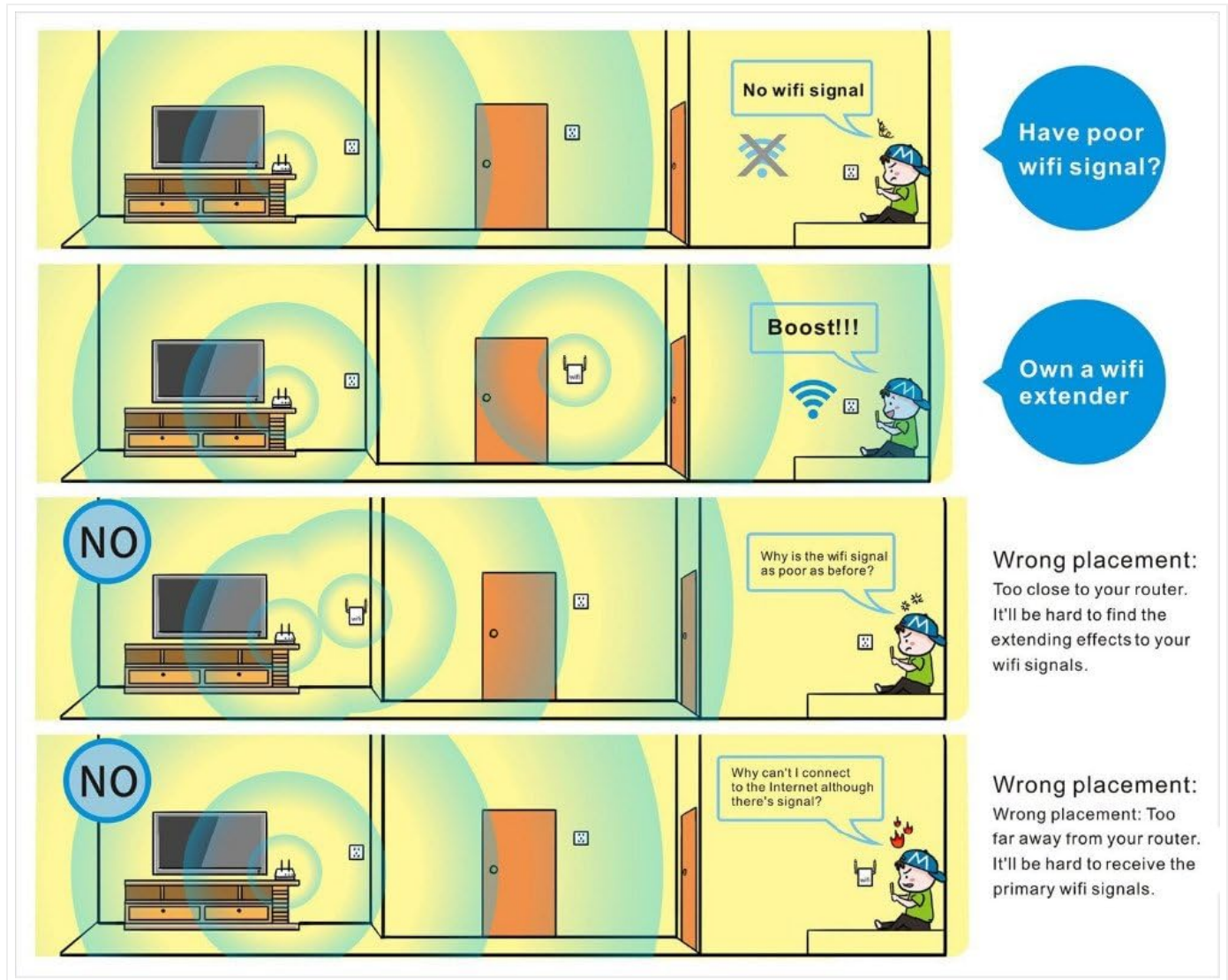


Figure 3: Guide to optimal repeater placement for best signal extension.

3.2. Powering On

Plug the PIX-LINK WR01 into a standard electrical outlet. The Power LED should illuminate, indicating the device is receiving power.



Figure 4: The PIX-LINK WR01 plugged into a power outlet.

3.3. Connection Methods

3.3.1. WPS (Wi-Fi Protected Setup) Method

1. Ensure your main router supports WPS functionality.
2. Press the WPS button on your PIX-LINK WR01. The WPS LED will start blinking.
3. Within two minutes, press the WPS button on your main router.
4. Wait for the WPS LED on the repeater to become solid, indicating a successful connection.

3.3.2. Web Browser Method

1. Connect your computer or mobile device to the repeater's Wi-Fi network (usually named "PIX-LINK_XXXX" or similar, without a password).
2. Open a web browser and enter the default IP address (e.g., 192.168.10.1) in the address bar.
3. Log in using the default username and password (refer to the included detailed user manual for specifics, often "admin" for both).

- Follow the on-screen wizard to select your desired operating mode (Repeater or AP) and configure network settings.

4. OPERATING MODES

The PIX-LINK WR01 supports two primary operating modes:

4.1. Repeater Mode


In Repeater Mode, the device extends the coverage of an existing Wi-Fi network. It receives the wireless signal from your main router and re-broadcasts it, effectively boosting the signal to areas with poor or no coverage. This mode is ideal for eliminating Wi-Fi dead zones in large homes or offices.

4.2. AP (Access Point) Mode

In AP Mode, the device transforms a wired network connection into a wireless one. You connect the repeater to your router or modem via an Ethernet cable (WAN port), and it then creates a new Wi-Fi network. This is useful for adding wireless capability to a wired-only network or creating a separate Wi-Fi network.


AP MODE

How to work: cable the LAN port of router with WAN port of the AP to extend signals.

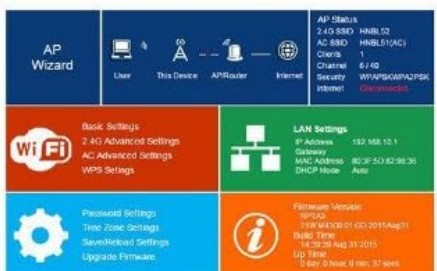


Modem


Router



① Select SSID "Wifi-Repeater" in your wifi list to connect and enter "192.168.10.1" in web browser to open the log in page.



② Click "login" to open the following page to click "Repeater"



③ Enter the name of the AP network and the password as you like to complete setting.
Note: Please cable the AP after setting, or you'll be unable to open the log in page.

Figure 5: Setup diagram for AP Mode, showing wired connection to router.

5. ADDITIONAL FEATURES

5.1. USB Charging Port

The PIX-LINK WR01 includes a 5V/2A USB port, allowing you to charge your mobile devices. This feature makes it a convenient travel accessory, serving as both a Wi-Fi extender and a portable charger.

Not only a WiFi extender but a portable charger with USB port



Worry about the unsafety of WiFi connection in hotels?

Forgot to bring your charger?

No more worry about them with USB WiFi extender



The image is a promotional graphic for the PIX-LINK WR01. It features a banner at the top with the text 'Not only a WiFi extender but a portable charger with USB port'. Below the banner are two panels. The left panel shows a hotel room with a bed and a lamp, with the text 'Worry about the unsafety of WiFi connection in hotels?'. The right panel shows a person with their head in their hands, with the text 'Forgot to bring your charger?'. In the center, there is a circular inset showing a close-up of the PIX-LINK WR01 device's USB port. Below the panels is the text 'No more worry about them with USB WiFi extender'. At the bottom, there is a large image of the PIX-LINK WR01 device, which is a white, rectangular, portable Wi-Fi extender with two antennas. A circular inset shows a close-up of the device's USB port, with the text 'Reset' and '5V/2A' visible. The device itself has a 'WiFi AP-Router' label and a 'LAN' port.

Figure 6: The PIX-LINK WR01 functioning as a portable charger.

6. MAINTENANCE

To ensure the longevity and optimal performance of your PIX-LINK WR01, consider the following maintenance tips:

- Keep the device in a well-ventilated area to prevent overheating.
- Avoid exposing the device to extreme temperatures, humidity, or direct sunlight.
- Clean the exterior of the device with a soft, dry cloth. Do not use liquid cleaners or aerosols.
- Periodically check for firmware updates on the manufacturer's website to ensure the device has the latest features and security patches.

7. TROUBLESHOOTING

This section addresses common issues you might encounter with your PIX-LINK WR01.

7.1. When to Reset

You may need to reset your device in the following situations:

- When changing between different operating modes (e.g., Repeater to AP).
- If you mistakenly enter the wrong password and fail to connect to the Internet.
- If you are unable to access the login page to change settings.
- When moving the device to a new location where the IP address conflicts with the previous network.

7.2. How to Reset

To perform a factory reset:

1. Ensure the Power LED is solid (device is powered on).
2. Locate the Reset hole on the device.
3. Using a thin object like a toothpick or paperclip, press and hold the Reset button for approximately 10 seconds until the WPS LED turns off.
4. Release the button. The device will restart, and the LAN/WAN LED will illuminate once the reset is complete.

WHEN TO RESET?



1. When you wanna change to different modes.
2. When you mistakenly enter wrong password and fail to connect the Internet.
3. When you fail to open the log in page to change settings.

HOW TO RESET?



1. When Power LED is solid.
2. Keep press the Reset hole with a toothpick for about 10 seconds until the WPS LED is on, then let go of the toothpick.
3. Then wait until the WPS LED is off and LAN/WAN LED is on. Reset Complete.

Figure 7: Visual guide for resetting the device.

7.3. Poor Signal or No Connection

- **Check Placement:** Ensure the repeater is placed optimally between your router and the desired coverage area, not too close to either. Refer to Section 3.1.
- **Verify Router Connection:** Confirm that your main router is functioning correctly and broadcasting a strong signal.
- **Reconfigure:** If issues persist, try reconfiguring the repeater using the web browser method to ensure all settings are correct.

8. SPECIFICATIONS

Feature	Detail
Brand	PIX-LINK
Model	WR01

Feature	Detail
Dimensions	7 x 5.5 x 4 cm
Weight	100 g
Data Transfer Rate	300 Megabits per second
Wireless Communication Standard	802.11b, 802.11g, wireless_n
Color	White
Interface	LAN/WAN Port, USB (5V/2A)
Power Input	AC Charger (integrated plug)

9. WARRANTY AND SUPPORT

All PIX-LINK products come with a **12-month warranty**. If you encounter any issues with your device during this period, please contact PIX-LINK customer support. Our dedicated support team is available to assist you with troubleshooting and technical inquiries, aiming to respond within 24 hours.

Please note that the Wi-Fi Repeater extends Wi-Fi coverage but does not increase the internet speed provided by your original router.



© 2024 PIX-LINK. All rights reserved.

Documents - PIX-LINK – WR01

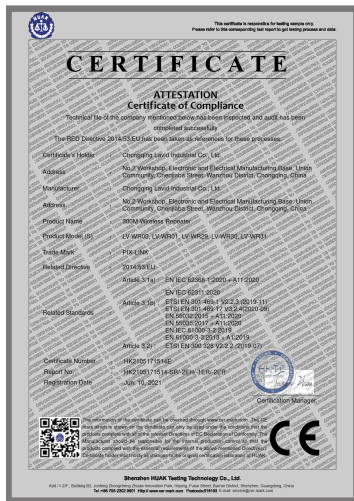


[pdf]

Microsoft Word LV WR03 RED Administrator Bekijk de CE marking PIX LINK SW08 Netwerkschicht 8 poorten 10 100 Mbps Wit bol original media s RBv1ZOWK8PW0 |||

C E R T I F I C A T E ATTESTATION Certificate of Compliance Technical file of the company mentioned ... treet, Wanzhou District, Chongqing, China 300M Wireless Repeater Product Model S LV-WR03, LV-**WR01**, LV-WR29, LV-WR30, LV-WR31 Trade Mark Related Directive Related Standards PIX-LINK 2014/53...

lang:en score:20 filesize: 1.6 M page_count: 1 document date: 2022-09-02



[pdf]

Microsoft Word LV WR03 RED Administrator Bekijk de CE marking PIX LINK WR39 300Mbps Wifi AP Repeater Wit Extender Super WiFi Booster bol original media s gXWk40BzrNxG |||

C E R T I F I C A T E ATTESTATION Certificate of Compliance Technical file of the company mentioned ... treet, Wanzhou District, Chongqing, China 300M Wireless Repeater Product Model S LV-WR03, LV-**WR01**, LV-WR29, LV-WR30, LV-WR31 Trade Mark Related Directive Related Standards PIX-LINK 2014/53...

lang:en score:20 filesize: 1.6 M page_count: 1 document date: 2022-09-02



[PIX-LINK 300M Wireless Repeater Certificate of Compliance](#)

Certificate of Compliance for PIX-LINK 300M Wireless Repeater, models LV-WR03, LV-WR01, LV-WR29, LV-WR30, LV-WR31, issued by Shenzhen HUAKE Testing Technology Co., Ltd.

lang:en score:15 filesize: 1.6 M page_count: 1 document date: 2022-09-20



[pdf]

Microsoft Word LV WR03 RED Administrator Bekijk de CE marking Wifi 300Mbps Ultra Mini Adapter met Externe Antenne YNW040 bol original media s pVJwvBGNYPzm |||

C E R T I F I C A T E ATTESTATION Certificate of Compliance Technical file of the company mentioned ... treet, Wanzhou District, Chongqing, China 300M Wireless Repeater Product Model S LV-WR03, LV-**WR01**, LV-WR29, LV-WR30, LV-WR31 Trade Mark Related Directive Related Standards PIX-LINK 2014/53...

lang:en score:15 filesize: 1.6 M page_count: 1 document date: 2022-09-22



FCC TEST REPORT

Test report
On Behalf of
ChongQing Lawit Industrial Co., Ltd.
For
300M wireless repeater
Model No.: LV-WR03, LV-WR01
FCC ID: 2A08LV-WR03

Prepared for: ChongQing Lawit Industrial Co., Ltd.
No. 6 Building Lianhe road, Economic and Technological Development Zone,
Wanchou, China

Prepared By: Shenzhen WJMK Testing Technology Co., Ltd.
15-82 Building, Jinteng Zhongsheng Zhixue Innovation Park, Futai Street,
Bao'an District, Shenzhen City, China

Date of Test: Sep. 26, 2018 - Oct. 09, 2018
Date of Report: Oct. 09, 2018
Report Number: HK180301015-1E

[FCC Test Report for PIX-LINK 300M Wireless Repeater \(LV-WR03, LV-WR01\)](#)

This FCC test report details the compliance of the PIX-LINK 300M wireless repeater, models LV-WR03 and LV-WR01, with FCC Part 15 Subpart C regulations. It includes test procedures, results, and measurement data for conducted emissions, output power, bandwidth, and more.

lang:en score:11 filesize: 2.72 M page_count: 78 document date: 2018-10-15