

Manuals+

[Q & A](#) | [Deep Search](#) | [Upload](#)

manuals.plus /

- › [Proven Industries](#) /
- › [Proven Industries Model 2516-B Trailer Lock User Manual](#)

Proven Industries Model 2516-B

Proven Industries Model 2516-B Trailer Lock User Manual

Model: 2516-B

INTRODUCTION

The Proven Industries Model 2516-B Trailer Lock is a heavy-duty security device designed to protect your trailer or camper from theft. This robust coupler lock is specifically engineered to fit select 2 5/16-inch Bulldog or Ram trailer couplers, providing a secure deterrent against unauthorized access.

Constructed from hardened steel, the locking components offer enhanced security, while the exterior shield is designed to resist common theft tools such as power tools, hammers, bolt cutters, and crowbars. The lock features a unique key design to prevent lockpicking and includes an interior locking mechanism to deter key duplication.



Figure 1: The Proven Industries Model 2516-B Trailer Lock, showcasing its robust design and black finish.

COMPATIBILITY AND SETUP

The Model 2516-B lock is custom-tailored for specific 2 5/16-inch Bulldog or Ram couplers. It is crucial to verify your coupler type and size against the compatible models shown below to ensure proper fit and function.

Model 2516-B Only Fits 2 5/16-Inch Couplers Shown



Disclaimer: The Model 2516-B lock will NOT fit your coupler model unless it is shown above.

PROVEN INDUSTRIES
LOCK TECHNOLOGY

Figure 2: Visual representation of 2 5/16-inch Bulldog or Ram trailer couplers compatible with the Model 2516-B lock. Ensure your coupler matches one of these types.

Installation Steps:

1. **Choose the correct lock:** Confirm that your trailer coupler is a 2 5/16-inch Bulldog or Ram type, as this lock is specifically designed for these models.
2. **Insert the inner slide:** Take the inner slide component of the lock and insert it into the coupler. Ensure it engages the latch mechanism securely.
3. **Place the outer shield:** Position the all-encompassing outer shield over the inner slide and the coupler. This shield provides an additional layer of protection.
4. **Secure the puck lock:** Place the puck lock over the two tabs on the outer shield and securely lock the cylinder using one of the provided keys. Ensure the puck lock is fully seated and the key turns smoothly to the locked position.

Easy Installation



1

Choose the correct lock based on your coupler size and type



2

Insert the inner slide into the coupler and engage the latch



3

Place the outer shield over the slide and coupler



4

Place the puck lock over the 2 tabs and securely lock the cylinder

PROVEN INDUSTRIES
LOCK TECHNOLOGY

Figure 3: Step-by-step visual guide for installing the Proven Industries trailer lock, illustrating the placement of the inner slide, outer shield, and puck lock.

Package Includes



Figure 4: Components included in the package: inner slide, exterior shield, puck lock, and two keys.

OPERATING THE LOCK

Once installed, operating the Proven Industries Model 2516-B Trailer Lock is straightforward. To lock the device, ensure the inner slide and outer shield are correctly positioned on the coupler, then insert the puck lock and turn the key clockwise until it clicks into the locked position. Remove the key.

To unlock, insert the key into the puck lock and turn it counter-clockwise. The puck lock will release, allowing you to remove the outer shield and inner slide from the coupler. Always keep your keys in a safe and accessible location.

The unique key design is engineered to prevent unauthorized duplication and lockpicking attempts, enhancing the security of your trailer.

MAINTENANCE

To ensure the longevity and optimal performance of your Proven Industries Model 2516-B Trailer Lock, follow these

maintenance guidelines:

- **Cleaning:** Periodically wipe down the exterior of the lock with a damp cloth to remove dirt and grime. Avoid using harsh chemicals or abrasive cleaners that could damage the finish.
- **Lubrication:** Apply a small amount of graphite lubricant or a silicone-based spray to the keyhole and internal locking mechanism once or twice a year, or more frequently in harsh environments. This helps prevent corrosion and ensures smooth operation. Do not use oil-based lubricants as they can attract dirt.
- **Inspection:** Regularly inspect the lock for any signs of wear, damage, or tampering. Ensure all components fit together snugly and the locking mechanism operates freely.
- **Storage:** When not in use, store the lock in a dry environment to prevent rust and corrosion, especially if it will be stored for extended periods.

TROUBLESHOOTING

If you encounter issues with your Proven Industries Model 2516-B Trailer Lock, consider the following troubleshooting steps:

- **Key is difficult to insert or turn:**
 - Check for debris in the keyhole. Use compressed air to clear it.
 - Apply a small amount of graphite lubricant into the keyhole and gently work the key in and out.
 - Ensure you are using the correct key.
- **Lock mechanism feels stiff or sticky:**
 - This often indicates a need for lubrication. Apply graphite or silicone spray to the internal mechanism.
 - Ensure the lock components are clean and free of excessive dirt or rust.
- **Puck lock does not seat properly:**
 - Verify that the inner slide and outer shield are correctly aligned and fully engaged with the coupler.
 - Check for any obstructions or foreign objects preventing the puck lock from seating.
- **Lock appears damaged:**
 - If the lock shows signs of significant physical damage, its security may be compromised. It is recommended to replace the lock.

If these steps do not resolve the issue, please contact Proven Industries customer support for further assistance.

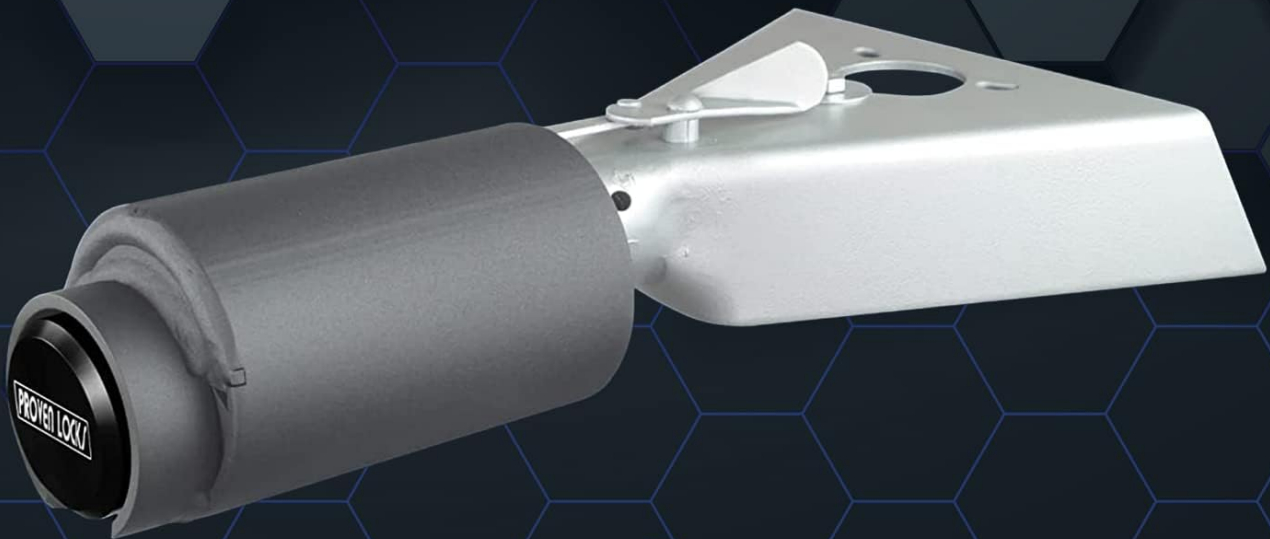
SPECIFICATIONS




Proven Industries Model 2516-B Trailer Lock Specifications

Feature	Detail
Model Name	Model 2516-B
Compatibility	Select 2 5/16-inch Bulldog or Ram Trailer Couplers
Lock Type	Pin Tumbler (Puck Lock)
Material	Hardened Alloy Steel
Color	Black
Dimensions (L x W x H)	8.5 x 4.5 x 4.5 inches

Feature	Detail
Special Features	Unique Key Design, High-Security Lock Cores (Upgrade Option)
Included Components	Inner slide, Exterior shield, Puck lock, 2 Keys
UPC	709293265782
Manufacturer	Proven Locks
Country of Origin	Made in the USA

Specifications



-  Fits select 2 $\frac{5}{16}$ inch couplers
-  $\frac{1}{4}$ inch steel construction
-  Black powder-coated finish



Made in the USA

PROVEN INDUSTRIES
LOCK TECHNOLOGY

Figure 5: Key specifications of the Model 2516-B lock, including material, finish, and compatibility.

WARRANTY AND SUPPORT

Proven Industries is dedicated to providing high-quality, effective trailer locks. For information regarding product warranty, please refer to the specific warranty documentation provided with your purchase or visit the official Proven Industries

website.

For customer support, technical assistance, or inquiries about your Model 2516-B Trailer Lock, please contact Proven Industries directly. You can find contact information and additional resources on their official brand store:

[Visit Proven Industries
Store](#)

Proven Industries is a family-owned business committed to customer satisfaction and manufacturing products in the USA.

© 2024 Proven Industries. All rights reserved.

This manual is for informational purposes only. Product specifications are subject to change without notice.