

Master Lock 5425D

Master Lock 5425D Wall Mount Combination Lock Box

Model: 5425D

Your guide to secure key and access card storage.

INTRODUCTION

The Master Lock 5425D Wall Mount Lock Box is designed to provide a secure and convenient solution for storing spare keys and access cards. Its durable metal body and wall-mount design ensure permanent installation and reliable protection. The lock box features large, easy-to-read light-up dials and a resettable four-digit combination, making it accessible even in low-light conditions. A weather cover protects the dials from the elements.



Figure 1: Master Lock 5425D Wall Mount Lock Box with its protective cover open, revealing the combination dials and internal storage.

SETUP

1. Wall Mounting

The Master Lock 5425D is designed for permanent wall installation. Ensure you select a sturdy surface capable of supporting the lock box securely. Mounting hardware is typically included.

1. Choose a suitable location for installation.
2. Open the lock box to expose the mounting holes on the back panel.
3. Mark the positions for drilling using the lock box as a template.
4. Drill pilot holes as necessary for your mounting surface.
5. Secure the lock box to the wall using appropriate screws.

Wall Mount Design for Permanent Installation



Figure 2: The lock box is designed for permanent wall installation, providing a secure point for key access.

2. Setting Your Combination

The lock box comes with a factory-set combination (usually 0-0-0-0). You can easily reset this to a personalized four-digit code.

1. Open the lock box using the current combination.
2. Inside the lock box, locate the reset lever (often marked 'A' and 'B'). Push the reset lever into position 'A'.
3. Rotate the dials to your desired four-digit combination. Ensure the numbers are aligned with the indicator line.
4. Push the reset lever back to position 'B'.
5. Scramble the dials to lock the mechanism. Your new combination is now set.

Setting Your Combination

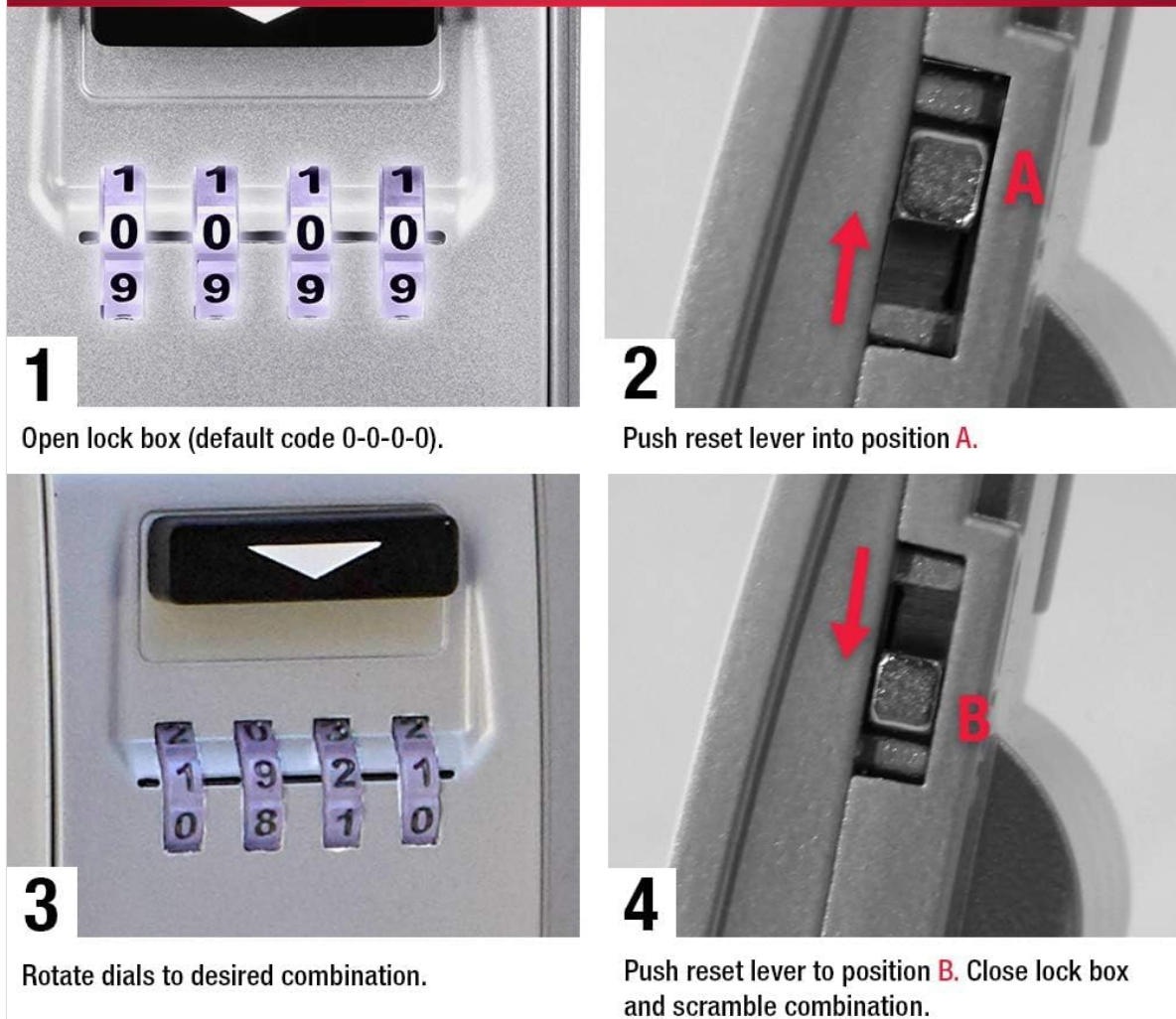


Figure 3: Step-by-step instructions for setting a personalized four-digit combination.

3. Battery Installation (for Light-Up Dials)

The light-up dials are powered by a replaceable CR2032 battery, which is typically included and pre-installed. If replacement is needed, refer to the maintenance section.

OPERATING INSTRUCTIONS

1. Opening the Lock Box

1. Slide down the weather cover to expose the dials. The dials will automatically light up in low-light conditions.
2. Rotate the dials to your set four-digit combination.
3. Push the large open lever (located above the dials) downwards to release the door.
4. The door will swing open, revealing the internal storage compartment.

2. Storing Keys and Access Cards

The internal cavity is designed to securely store multiple keys and access cards.

- Place your keys or access cards inside the compartment.

- Ensure items are placed neatly to allow the door to close without obstruction.



Figure 4: The spacious interior securely holds multiple keys and key fobs, offering a safer alternative to traditional hiding spots.

3. Closing and Locking the Lock Box

1. Close the door of the lock box firmly until it clicks shut.
2. Scramble the combination dials to prevent unauthorized access.
3. Slide the weather cover back up to protect the dials from the elements.

4. Using Light-Up Dials

The light-up dials activate automatically when the weather cover is opened in low-light conditions, enhancing visibility and ease of use during nighttime or in dimly lit areas.

MAINTENANCE

1. Weather Cover

The integrated weather cover protects the combination dials from rain, snow, and dirt, preventing freezing and jamming. Ensure the cover is always closed when the lock box is not in use to maintain its

protective function.

2. Battery Replacement

The light-up dials are powered by a CR2032 battery. If the dials no longer illuminate, the battery may need replacement.

1. Open the lock box and locate the battery compartment, typically on the inside of the door or main body.
2. Carefully remove the old CR2032 battery.
3. Insert a new CR2032 battery, ensuring correct polarity.
4. Close the battery compartment securely.

TROUBLESHOOTING

- **Dials not lighting up:** Check the CR2032 battery. Replace if necessary.
- **Difficulty opening:** Ensure the correct combination is entered and the dials are perfectly aligned. The open lever should move freely.
- **Stuck dials:** Ensure the weather cover is fully open and there is no debris obstructing the dials. Apply a small amount of graphite lubricant if needed.
- **Forgotten combination:** If you forget your combination, Master Lock recommends contacting their customer support for assistance, as there is no universal override code.

SPECIFICATIONS

Feature	Detail
Model Number	5425D
Lock Type	4-Digit Resettable Combination
Body Material	Metal
External Dimensions (L x W x H)	8.2 x 5.3 x 2.1 inches (20.8 x 13.5 x 5.3 cm)
Internal Dimensions (H x W x D)	4-3/16 inch (106 mm) height, 2-3/8 inch (60 mm) width, 1 inch (25 mm) depth
Key Capacity	6 keys
Special Features	Light-Up Dials, Durable Weather Cover
Battery Type	CR2032 (included)
Item Weight	1.15 pounds (0.52 kg)

Dimensions

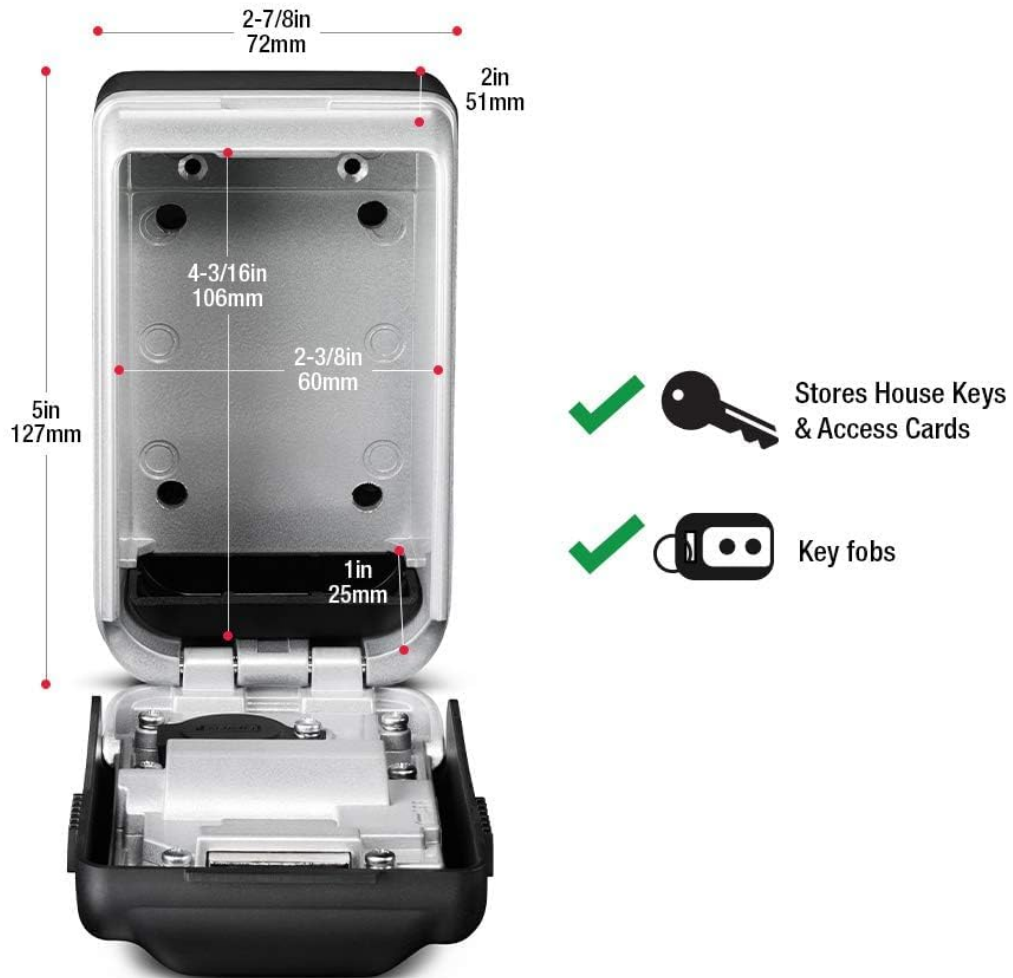


Figure 5: Detailed dimensions of the Master Lock 5425D lock box.

OFFICIAL PRODUCT VIDEO

Your browser does not support the video tag.

Video 1: An official overview of the Master Lock 5424D/5425D models, demonstrating key features and usage.

WARRANTY INFORMATION

The Master Lock 5425D Lock Box is backed by a **Limited One Year Warranty**. This warranty covers defects in material and workmanship under normal use. For specific terms and conditions, please refer to the warranty documentation included with your product or visit the official Master Lock website.

SUPPORT



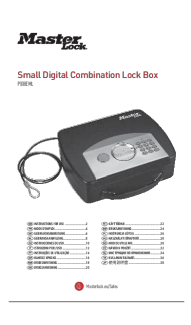



For further assistance, technical support, or to inquire about replacement parts, please contact Master Lock customer service. You can find contact information on the official Master Lock website or through the retailer where you purchased the product.

- **Online Support:** Visit the [Master Lock official website](#).

- **Customer Service:** Refer to your product packaging for regional contact numbers.

© 2023 Master Lock. All rights reserved.

Related Documents - 5425D

	<p>Master Lock 5400D Shackle Model Key Storage Lock Box Instructions</p> <p>Detailed instructions for using, setting a new combination, and hanging the Master Lock 5400D Shackle Model key storage lock box. Learn how to operate the combination lock and secure your keys.</p>
	<p>Master Lock #5400D Key Storage Combination Lock Instructions</p> <p>Comprehensive instructions for operating, setting combinations, and using the Master Lock #5400D portable key safe with shackle. Learn how to open, secure, and maintain your key storage lock.</p>
	<p>Master Lock Small Digital Combination Lock Box P008EML Instructions</p> <p>This document provides instructions for the Master Lock Small Digital Combination Lock Box, model P008EML. Learn how to install batteries, program user codes, and open the lock box.</p>
	<p>Master Lock Key Safe Troubleshooting Guide</p> <p>Step-by-step troubleshooting guide for Master Lock key safes, covering opening, closing, and resetting combinations.</p>
	<p>Master Lock 5401EURD Key Safe Instructions</p> <p>Comprehensive instructions for operating, setting a new combination, and wall-mounting the Master Lock 5401EURD key safe. Includes multilingual guidance.</p>
	<p>Master Lock Combination Lock with Key: Setting and Retrieving Your Code</p> <p>Learn how to easily set a new combination and retrieve a lost code for your Master Lock combination padlock with key. Step-by-step instructions for security and convenience.</p>