

## Manuals+

[Q & A](#) | [Deep Search](#) | [Upload](#)

manuals.plus /

› [TomTom](#) /

› [TomTom VIA 62 Car Sat Nav User Manual](#)

## TomTom VIA 62

# TomTom VIA 62 Car Sat Nav User Manual

Model: VIA 62 (1AP6.054.00)

## INTRODUCTION

---

This manual provides essential information for setting up, operating, and maintaining your TomTom VIA 62 Car Sat Nav. The TomTom VIA 62 is designed to provide reliable navigation, real-time traffic updates, and hands-free calling for a safer and more efficient driving experience. Please read this manual thoroughly to ensure proper use and to maximize the features of your device.

## WHAT'S IN THE BOX

---

Your TomTom VIA 62 package includes the following components:

- TomTom VIA Device
- USB Car Charger
- USB Cable
- Documentation
- Roof Mount



Image: The TomTom VIA 62 device, its integrated mount, a USB cable, and a USB car charger.

## SETUP

### 1. Mounting the Device

The TomTom VIA 62 comes with an integrated mount designed for easy attachment to your windscreen or dashboard. Ensure the mounting surface is clean and dry for optimal suction.

1. Press the suction cup firmly against the chosen surface.
2. Twist the base of the mount to lock the suction cup in place.
3. Adjust the angle of the device for optimal viewing without obstructing your view of the road.

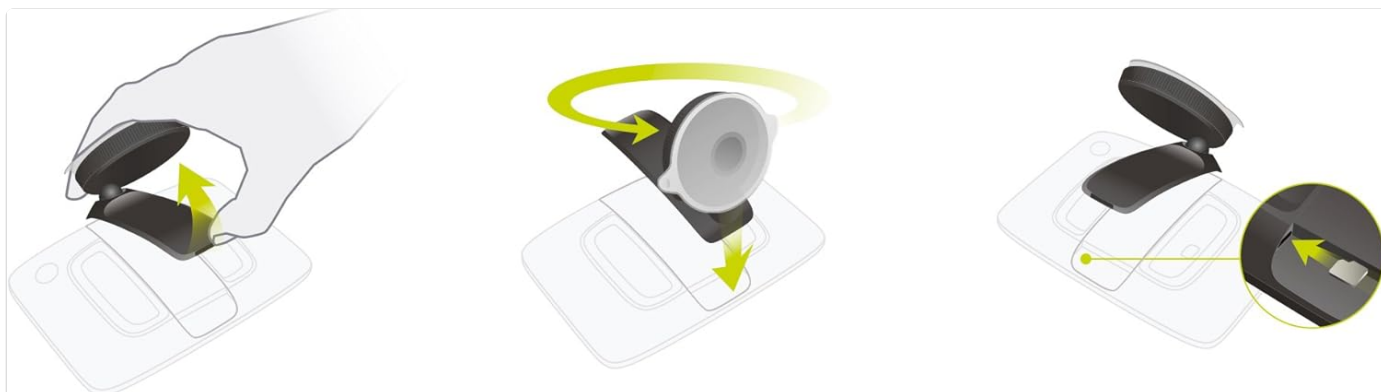


Image: Step-by-step diagram illustrating the process of attaching the device mount using its suction cup.





Image: Two views of the TomTom VIA 62 device from the rear and side, highlighting the integrated mount.

## 2. Connecting Power

Connect the supplied USB cable to the TomTom VIA device and the USB car charger. Plug the car charger into your vehicle's 12V power socket. It is recommended to keep the device connected to power during use to ensure continuous operation and charging.

## OPERATING YOUR TOMTOM VIA 62

### Basic Navigation

To begin navigating, tap the screen to access the main menu. Select "Search" to enter your destination. You can search by address, postcode, Point of Interest (POI), or GPS coordinates. The device will then calculate the fastest route.



Image: The TomTom VIA 62 screen displaying an active navigation route with traffic information and estimated arrival time.





Image: Two perspectives of the TomTom VIA 62 mounted on a car dashboard, demonstrating its placement during use.

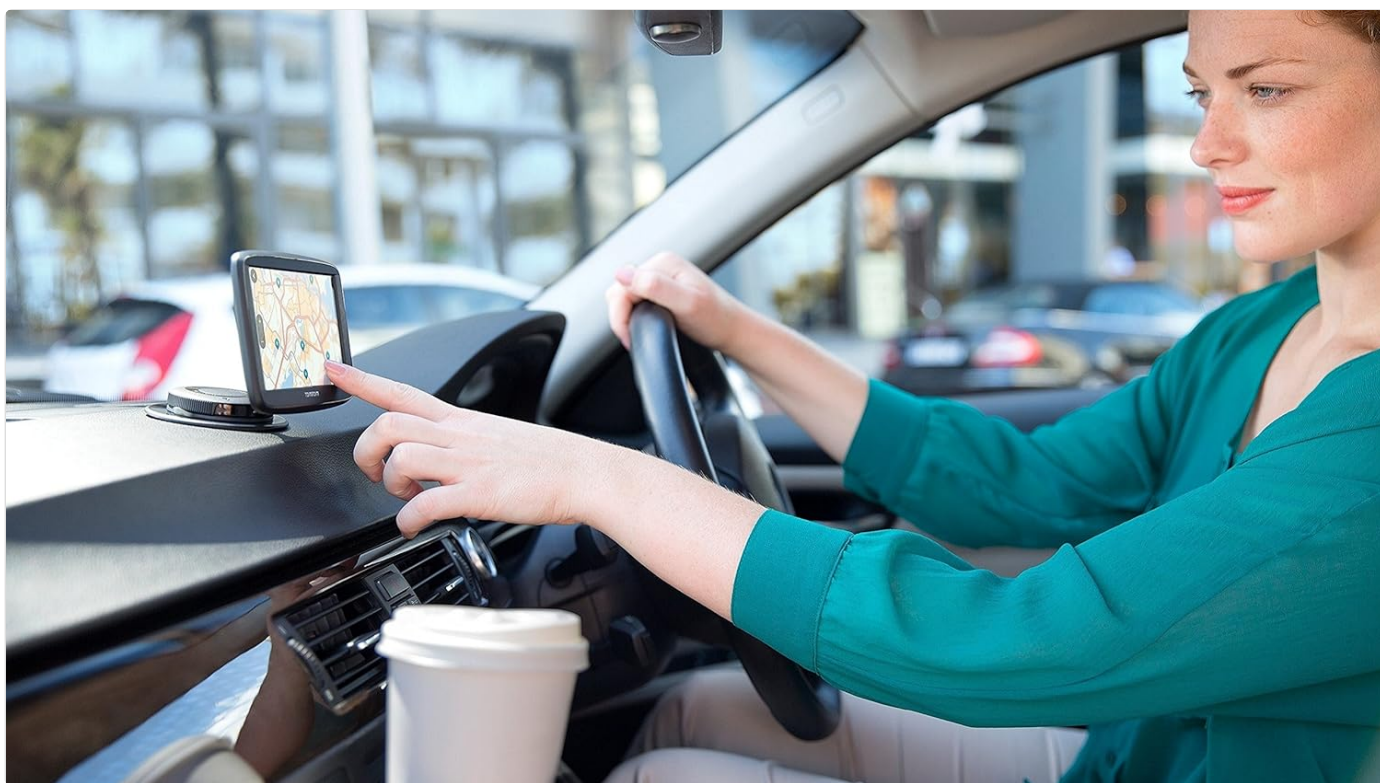


Image: A user interacting with the touchscreen of the TomTom VIA 62 while it is mounted in a vehicle.

## Key Features

- **TomTom Traffic:** Provides real-time traffic information to help you avoid delays. This feature requires a connection to your smartphone via Bluetooth. The device intelligently plans routes around traffic incidents.
- **TomTom Western EU Map Updates:** Your device includes free map updates for Western Europe. Connect your device to a computer with the MyDrive Connect software to download the latest road changes.
- **Speed Cameras:** Receive advance warnings when approaching speed cameras. This feature helps you maintain awareness of speed limits.

- **Smartphone Connected:** Connect your TomTom VIA 62 to your smartphone via Bluetooth to enable TomTom Traffic, Speed Camera Updates, and access to MyDrive services.
- **Hands-free Calling:** Make and receive calls directly through your TomTom VIA 62 using Bluetooth connectivity with your smartphone. This allows for safer communication while driving.



Image: A smartphone screen showing the TomTom Traffic Checker application, demonstrating the smartphone connectivity feature.

## MAINTENANCE

### Updating Maps and Software

To ensure your TomTom VIA 62 has the most accurate maps and the latest software features, regularly connect it to your computer and use the TomTom MyDrive Connect application. Updates can be large and may take several hours, especially for initial map downloads. It is recommended to perform updates overnight or when the device is not needed for an extended period.

### Cleaning Your Device

Use a soft, lint-free cloth to clean the screen and exterior of your device. Do not use abrasive cleaners or solvents, as these can damage the screen or casing.

## TROUBLESHOOTING

Problem	Possible Solution
<b>Device not turning on or charging.</b>	Ensure the USB cable and car charger are securely connected. Check the vehicle's 12V power socket for functionality. Try a different USB port or power source if available.
<b>Slow satellite acquisition.</b>	Ensure the device has a clear view of the sky. Move to an open area away from tall buildings or dense foliage. Updates to QuickGPSfix via MyDrive Connect can improve acquisition time.

Problem	Possible Solution
Bluetooth connectivity issues.	Ensure Bluetooth is enabled on both your TomTom device and smartphone. Try unpairing and re-pairing the devices. Restart both devices.
Map updates are very slow or fail.	Ensure a stable internet connection. Close other applications on your computer. Temporarily disable antivirus or firewall software if it interferes with MyDrive Connect. Ensure sufficient storage space on the device.
Screen is unresponsive.	Perform a soft reset by holding the power button until the device restarts. If the issue persists, ensure the screen is clean and free of debris.

For further assistance, please refer to the official TomTom support website or contact customer service.

## SPECIFICATIONS

- Model Name: TomTom VIA 62
- Item Model Number: 1AP6.054.00
- Screen Size: 6 Inches
- Product Dimensions: 2.38 x 16.25 x 9.05 cm
- Weight: 284 g
- Battery: 1 Lithium Ion battery (included)
- Connectivity Technology: USB, Bluetooth
- Special Features: Touchscreen, Bluetooth
- Map Type: Western Europe
- Vehicle Service Type: Car






## WARRANTY AND SUPPORT

For detailed warranty information and to access customer support, please visit the official TomTom website. You can find FAQs, troubleshooting guides, and contact options for technical assistance and service inquiries.

Online Support: [www.tomtom.com/support](http://www.tomtom.com/support)

### Related Documents - VIA 62

<div>TomTom GO Navigation Brugervejledning</div> <div>tomtom</div>	<div><a href="#">TomTom GO Navigation App Brugervejledning: Kom i gang og brugsanvisning</a></div> <div>Denne brugervejledning giver en omfattende guide til TomTom GO Navigation-appen. Lær at opsætte din app, navigere med kort og vejledninger, bruge TomTom Traffic og MyDrive, samt tilpasse indstillingerne for en optimal køreoplevelse.</div>
--	--

<div><div>TomTom Rider</div><div>Lietošanas pamācība</div><div>10.1</div></div> <div></div>	<div><a href="#">TomTom Rider Lietošanas pamācība</a></div> <div>Detalizēta lietošanas pamācība TomTom Rider GPS navigācijas ierīcei, kas aptver uzstādīšanu, galvenās funkcijas, iestatījumus, pakalpojumus un problēmu novēršanu.</div>
<div><div>TOM BY TOMTOM</div><div>User Manual</div><div></div></div> <div></div>	<div><a href="#">TomTom Tom User Manual - Setup, Usage, and Safety Guide</a></div> <div>Comprehensive user manual for the TomTom Tom device, covering setup, in-car usage, alert explanations, safety information, environmental details, and warranty terms. Learn how to pair your device, understand alerts, and ensure safe operation.</div>
<div></div>	<div><a href="#">TomTom GO Classic GPS Navigation System - Installation and Safety Guide</a></div> <div>Comprehensive guide for installing and safely using the TomTom GO Classic GPS navigation system. Includes setup instructions, safety warnings, battery information, and technical specifications.</div>
<div><div>TomTom GPS</div><div>User Manual</div><div>1.1</div></div> <div></div>	<div><a href="#">TomTom GPS Sports Watch User Manual</a></div> <div>Comprehensive user manual for TomTom GPS Sports Watches, including models like Runner 3, Spark 3, and Adventurer. Learn about setup, activities, tracking, music, settings, and troubleshooting for optimal fitness tracking.</div>
<div><div>TOM BY TOMTOM</div><div>Manuel d'utilisation</div><div></div></div> <div></div>	<div><a href="#">Manuel d'utilisation Tom by TomTom</a></div> <div>Manuel d'utilisation complet pour l'appareil Tom by TomTom, incluant l'installation, l'utilisation en voiture, les alertes routières, la connectivité Bluetooth, la gestion de la batterie, les informations légales et les consignes de sécurité.</div>