

SUNPIE SP-MV-C

SUNPIE Motorcycle LED Headlights Instruction Manual

Brand: **SUNPIE** | Model: **SP-MV-C**

1. INTRODUCTION

This manual provides detailed instructions for the installation, operation, and maintenance of your SUNPIE Motorcycle LED Headlights. These headlights are designed to offer enhanced illumination and durability for compatible Victory motorcycle models.



Figure 1: Front view of the SUNPIE Motorcycle LED Headlight.

Victory headlight fits: 2016 Cross Country 8-ball 2016 Cross Country 2016 Vegas 8-ball 2016 Vegas 2016 Hammer 2016 Cross Country T our 2016 Magumbx-1 StealthEdition 2016 Magnum 2015 Cross Country 8 Ball 2015 Cross Country 2015 Vegas S Ball 2015 Hammer 8 Ball 2015 Cross Country Tour 2015 Magnum X1 2015 Cross CountryMagnum 2014 Cross Roads8 Ball 2014 Cross Roads8 Classic 2014 Cross Country To 2014 15th Anni CrossCountry T our 2014 Cross Country 2014 Cross Country 8 Ball 2014 Vegas -Ball 2014 Hammer 3-bal 2014 Hammer S 2014 Boardwalk 2014 Jackpot 2014 Ness Cross Country	2013 Cross Roads 2013 Cory Ness Cross Country Tou 2013 Cross Country 2013 Cross Country Tour 2013 Zachness Cross Country 2013 Vegas 8-ball 2013 Hard Ball 2013 Hammer 8-ball 2013 Judge 2013 Boardwalk 2013 Jackpot 2012 Cross Roadsb 2012 Cross Roads 3 Classic LE 2012 Vega 2012 Vegas 8-ball 2012 Zach Ness Vegas 2012 Hammer 8-ball 2012 Jackpot 2012 Kmgin 2012 Cory Ness Cross Country 2012 Cross Country Tour 2012 Cross Countr 2011 Kingpin 2011 Kmmpi 8-ball 2011 Cory Ness Cross Country 2011 Cross Country 2011 Cross Roads Custom 2011Vegas 2011 Vegas 8-ball	2010 Cross Country 2009 Kingpin 2009 Kingpin 8-ball 2009 Kingpin Tour 2009 Vegas 8-ball 2009 Vegas Low 2009 Hammer 2009 Hammer S 2009 Ness Jackpot 2009 Jackpot 2008 Kingpin 2008 Kingpin 8-ball 2008 Kingpin Tour 2008 Vegas 8-ball 2008 Vegas Low 2008 Hammer 2008 Hammer S 2008 Jackpot 2008 Ness Jackpot 2007 Kingpin 2007 Kingpin Dehuxe 2007 Vegas 8-ball 2007 Hammer 2007 Jackpot 2007 Ness Jackpot
--	---	--

Figure 2: Front view of a motorcycle equipped with the SUNPIE LED Headlight.

2. PRODUCT FEATURES

- **High-Intensity Illumination:** Equipped with 60W LED chips, providing bright white light (6500K color temperature) for improved visibility. Features both high and low beam functions.
- **Durable Construction:** IP67 waterproof rating ensures reliable performance in various weather conditions. The back housing is made of premium die-cast aluminum with heat-dissipating grooves for optimal thermal management.
- **Plug-and-Play Design:** Engineered for straightforward installation, directly replacing the stock headlight on compatible models.



Figure 3: The headlight features an IP67 waterproof rating, ensuring protection against water ingress.



Figure 4: Rear view of the headlight, highlighting the heat-dissipating fins for extended lifespan.

3. COMPATIBILITY

This LED headlight is compatible with various Victory motorcycle models. Please verify your motorcycle's year and model against the list below:

- 2016-2014 Cross Country 8-Ball
- 2016-2010 Cross Country
- 2016-2007 Vegas 8-Ball
- 2016-2011 Vegas
- 2016-2007 Hammer
- 2016-2012 Cross Country Tour
- 2015-2012 Hammer 8-Ball
- 2015 Cross Country Magnum
- 2014 Cross Roads Classic
- 2014-2008 Hammer S
- 2014-2013 Boardwalk
- 2014-2007 Jackpot
- 2014 Ness Cross Country
- 2013-2012 Cross Roads
- 2013 Cory Ness Cross Country Tour
- 2013 ZachNess Cross Country
- 2013 Hard Ball
- 2012-2007 Kingpin
- 2011-2008 Kingpin 8-Ball
- 2009-2008 Vegas Low
- 2009-2007 Ness Jackpot



Figure 5: Visual representation of compatible Victory motorcycle models.

4. INSTALLATION GUIDE

The SUNPIE LED Headlight features a plug-and-play design for simplified installation. Follow these general steps:

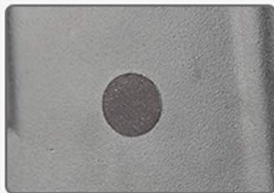
1. **Preparation:** Ensure your motorcycle is turned off and the battery is disconnected before beginning installation.
2. **Remove Existing Headlight:** Carefully remove your motorcycle's existing headlight assembly according to your vehicle's service manual.
3. **Connect Wiring:** The headlight has two main connectors. Connect the wiring from your motorcycle to the corresponding connectors on the new LED headlight. For low beam, the top three LEDs will activate. For high beam, the bottom three LEDs will activate. Some users have noted that the wiring for low and high beams may need to be tested to ensure correct connection, as factory wiring can vary.
4. **Secure Headlight:** Mount the new LED headlight into the housing and secure it using the original fasteners.
5. **Reconnect Battery:** Reconnect your motorcycle's battery.
6. **Test Functionality:** Turn on your motorcycle and test both the low and high beam functions to ensure

proper operation.



Plug and Play

Very easy to install, just remember, top bulb for Low Beam; Bottom bulb for High Beam



Exhaust

If there is fog inside, just remove the rubber sticker to exhaust.



Figure 6: Detail of the plug-and-play connectors and the exhaust vent for moisture release.



Figure 7: The headlight features standard electrical connectors for easy integration.

Video 1: Overview of the Victory Cross Country Headlight, including its plug-and-play features.

Video 2: Product unboxing and display of the headlight with Daytime Running Lights (DRL) for Victory motorcycles.

5. OPERATING INSTRUCTIONS

The headlight operates with two primary lighting modes:

- **Low Beam:** When the low beam is activated, the top three LED lights will illuminate, providing a focused beam for regular riding conditions.
- **High Beam:** When the high beam is activated, the bottom three LED lights will illuminate, providing maximum light output for extended visibility.

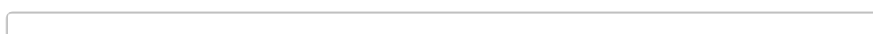


Figure 8: Visual comparison of the headlight's low beam and high beam illumination patterns.

LEANING LEFT ON LOW BEAM



Figure 9: Low beam performance comparison between a standard halogen headlight and the SUNPIE LED Headlight.

STRAIGHT ON LOW BEAM

HALOGEN HEADLIGHT



PROAUTO Headlight



Figure 10: High beam performance comparison between a standard halogen headlight and the SUNPIE LED Headlight.

Video 3: Demonstration of the Cross Country Motorcycle LED Headlights' low and high beam functions.

Video 4: Features and lighting modes of Polaris Victory LED Headlights Assembly.

6. MAINTENANCE

To ensure optimal performance and longevity of your LED headlight, consider the following maintenance tips:

- **Cleaning:** Regularly clean the lens with a soft, damp cloth to remove dirt and debris. Avoid abrasive cleaners that could scratch the lens.
- **Inspection:** Periodically check the wiring connections for any signs of wear or corrosion. Ensure the headlight is securely mounted.
- **Moisture Management:** If fogging occurs inside the lens, remove the rubber sticker on the exhaust vent (Figure 6) to allow moisture to dissipate. Re-seal the vent after the moisture has cleared.

7. TROUBLESHOOTING

Problem	Possible Cause	Solution
Low beam not working or flickering	Incorrect wiring connection; reversed polarity; loose connection; internal defect.	Verify wiring connections (black is negative, red is positive). Test connections before final assembly. If issues persist, contact support.
High beam not working	Incorrect wiring connection; loose connection.	Check high beam wiring connection. Ensure it is securely plugged in.
Headlight not turning on	No power; blown fuse; incorrect wiring.	Check motorcycle's fuse box. Ensure all wiring is correctly connected and receiving power.
Moisture inside lens	Condensation due to temperature changes.	Remove the rubber sticker from the exhaust vent to allow moisture to escape. Re-seal once clear.

8. SPECIFICATIONS

- **Brand:** SUNPIE
- **Model Number:** SP-MV-C (4333013886)
- **Color:** Chrome
- **Wattage:** 60 watts
- **Color Temperature:** 6500K
- **Waterproof Rating:** IP67
- **Lens Material:** Polypropylene
- **Auto Part Position:** Front
- **Item Weight:** 2.68 pounds
- **UPC:** 747100268014



- Voltage: 10-32V DC
- Waterproof: IP67
- Color temperature: 6500K
- Watt: 60W@ High, 40W @ Low
- LED Chip: CREE
- Warranty: 2 Years
- Life: 30000 hs
- Luminous: high 3450LM, low 2800LM

Figure 11: Detailed dimensions and technical specifications of the headlight.

9. WARRANTY AND SUPPORT

SUNPIE provides a 2-year service warranty for this LED motorcycle headlight. If you encounter any problems with your headlight, please contact SUNPIE customer service for assistance or replacement.






Contact Information: Please refer to your purchase documentation or the official SUNPIE website for the most current customer support contact details.

Related Documents - SP-MV-C



[SUNPIE RGBW High Power LED Rock Lights Installation and User Guide](#)

Comprehensive guide for SUNPIE RGBW High Power LED Rock Lights, covering features, Bluetooth connection, app control, specifications, installation steps, and remote functions. Includes FCC compliance information.

 <p>The image shows the SUNPIE product packaging and a smartphone app interface. The packaging features a Jeep Wrangler JK and lists features like 'RGB HALO LED HEADLIGHTBAND FOG LIGHTS', 'PET FRIENDLY', and 'Bluetooth 4.0'. The app interface shows various lighting control options.</p>	<p>SUNPIE RGB Halo LED Headlights and Fog Lights for Jeep Wrangler JK</p> <p>Detailed information on SUNPIE RGB Halo LED Headlightband and Fog Lights for Jeep Wrangler JK, featuring Bluetooth 4.0 control for mobile connection and DIY lighting effects.</p>
 <p>The image shows the cover of the Cheerble Ball user manual, which includes a diagram of the ball and its various modes.</p>	<p>Cheerble Ball User Manual: Features, Operation, and Specifications</p> <p>Comprehensive user manual for the Cheerble Ball, detailing its interactive modes, charging, LED indicators, specifications, and warranty information. Learn how to set up and use your Cheerble Ball for pet entertainment.</p>
 <p>The image shows the cover of the Silent Partner SP Smart user manual, featuring a green tennis ball machine and the text 'User Manual', 'Portable Power, Precision, and Performance', and 'SP Smart'.</p>	<p>Silent Partner SP Smart User Manual: Portable Tennis Ball Machine Operation and Maintenance</p> <p>Comprehensive user manual for the Silent Partner SP Smart tennis ball machine. Learn about setup, operation, controls, safety, maintenance, and troubleshooting for this portable power, precision, and performance ball launcher.</p>
 <p>The image shows the cover of the Matco Tools MBP1000 user manual, which includes a diagram of the tool and a list of intended uses.</p>	<p>Matco Tools MBP1000 Ball Joint Service Tool and Master Adapter Set User Manual</p> <p>Comprehensive user manual for the Matco Tools MBP1000 Ball Joint Service Tool and Master Adapter Set, detailing its intended use, operating instructions, parts breakdown, and extensive vehicle application guide for ball joint removal and installation.</p>
 <p>The image shows the cover of the Coolado T-PUMP XS user manual, featuring a white cordless tire pump and the text 'T-PUMP XS USER MANUAL' and 'CORDLESS HIGH PRESSURE SMART TIRE POCKET PUMP'.</p>	<p>Coolado T-PUMP XS User Manual: Cordless High-Pressure Smart Tire Pocket Pump</p> <p>Comprehensive user manual for the Coolado T-PUMP XS cordless high-pressure smart tire pocket pump, covering product features, inflation processes, adapters, troubleshooting, maintenance, and warranty information.</p>