

## Vyncs VYNCSLINK-001

# Vyncs GPS Tracker User Manual

Model: VYNCSLINK-001

## INTRODUCTION

---

The Vyncs GPS Tracker is a comprehensive vehicle monitoring solution designed to provide real-time location tracking, driving alerts, vehicle health diagnostics, and fuel efficiency insights. This device connects to your vehicle's OBD-II port, eliminating the need for battery changes or frequent charging. It is developed in the USA and offers worldwide coverage.

This manual provides detailed instructions for setting up, operating, and maintaining your Vyncs GPS Tracker, ensuring you get the most out of its advanced features.

## WHAT'S IN THE BOX

---

- 1 Vyncs GPS OBD Tracker Device
- 1 Integrated SIM Card
- 1 Quick Setup Guide
- 1 Year of Data Plan & Service (included with purchase)



Image: The Vyncs GPS Tracker device shown next to its packaging, highlighting the "Tracking & Safety" features.

## SETUP INSTRUCTIONS

---

1. **Download the Vyncs App:** Search for "Vyncs" in your device's app store (available on iOS and Android).

# Location

*Anytime. Anywhere.*

- Collects data every second and sends three 20 seconds location updates every minute to the account.
- 15 and 30 seconds GPS rate upgrades available.
- Unlimited trip history and route details.
- Updates location hourly when ignition-off.
- Safety zone, speeding, and many other alerts.

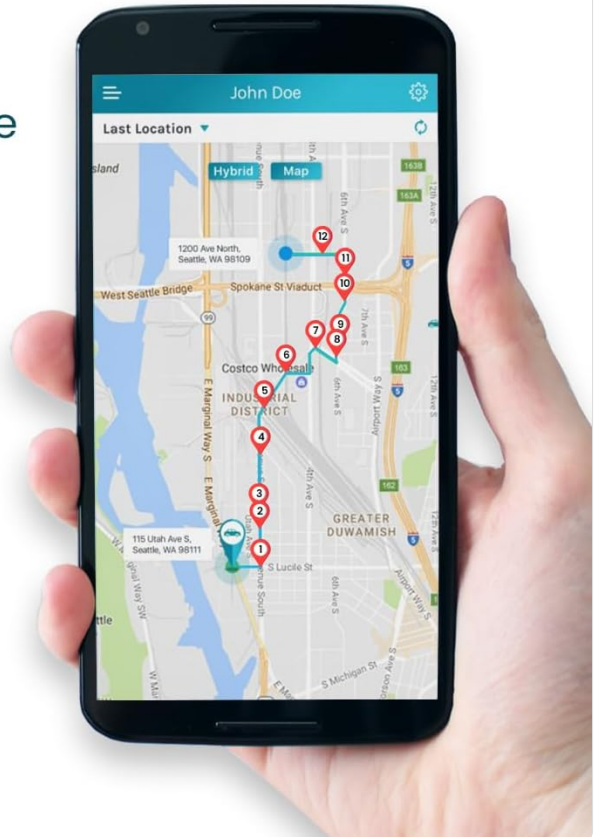


Image: A smartphone displaying the Vyncs app download page in an app store.

2. **Register Your Device:** Follow the in-app instructions to register your Vyncs device. An activation fee is paid online during this registration process.
3. **Locate Your Vehicle's OBD-II Port:** The OBD-II port is typically located under the dashboard on the driver's side, often near the steering column or above the foot pedals. Consult your vehicle's owner's manual if you cannot locate it.

# Awesome Pricing, No Monthly Fees.



USA-based  
Company

**Price + \$39.99 activation fee\* include:**

- 1 Vyncs Link 4G Device
- 1 Global SIM Card
- 1 year of data plan & service

**30-Day Free Trial!**



## Why Vyncs?

- Real-Time GPS Tracker + Way More
- No Monthly Fees
- Works in 200+ countries
- Track Beyond the Car with our Free App  
*Indoor and Outdoor Tracking; no other tracker has this*
- Supported on Web, iOS, & Android
- No Battery Required!  
*Safely draws power from your car.*
- Know all of your car's health problems
- Unlimited history for your car's data
- True posted speed limits shown on map

**CHECK OUT  
NEW VYNCS STORE**  
[amazon.com/vyncs](https://amazon.com/vyncs)

*\*Activation fee to be paid online during device registration*

Image: A hand inserting the Vyncs device into the OBD-II port located under the car's dashboard.

- 4. Plug in the Vyncs Device:** Firmly insert the Vyncs device into the OBD-II port. Ensure it is securely connected. The device draws power directly from the OBD-II port, so no external charging is required.
- 5. Verify Connection:** Once plugged in, the device will begin communicating with the Vyncs system. Check the app to confirm that your device is online and reporting data.

## OPERATING INSTRUCTIONS

### Real-time Location Tracking

The Vyncs device provides real-time GPS tracking of your vehicle. Location updates are sent every 3 minutes, with upgrades available for 60, 30, or 15-second updates. Even when the car ignition is off, the device wakes up once every hour to update its location.

- View your vehicle's current location on a map within the Vyncs app or web account.
- Access unlimited trip histories and route details.
- Receive alerts for safety zones (geofences), speeding, and other events.



# Driver Safety

## *Monitor Who Matters.*

- Harsh driving alerts & trip performance.
  - E.g. Impact detection, harsh breaking/turns.
- Device tamper detection.
- Roadside assistance in Vyncs Premium. U.S. & Canada only.
- Track beyond the car. Optional, free family phone location sharing.
- Speeding & idling locations on map.



Image: A smartphone screen showing the Vyncs application with a map displaying a vehicle's location and trip history.

### Driver Safety Features

Monitor driving behavior and receive alerts for unsafe driving patterns.

- **Speeding Alerts:** Get notifications when the vehicle exceeds a set speed limit, with true posted speed limits displayed on the map.
- **Harsh Driving Alerts:** Receive alerts for harsh braking, rapid acceleration, and sudden turns.
- **Accident/Impact Detection:** The device can detect accidents or impacts and send immediate alerts.
- **Device Tamper Detection:** Be notified if the device is disconnected from the OBD-II port.
- **Geo-fence Zones:** Create custom geographical boundaries and receive alerts when the vehicle enters or exits these zones.
- **Curfew Hours:** Set specific times during which the vehicle should not be operated and receive alerts if it is.

# Vehicle Health

*Keeping Your Car in Good Health.*

- Check engine lights and fault codes.
  - E.g. P0176 Fuel Composition Sensor Circuit Malfunction.
- Maintenance alerts and reports.
- Low battery and engine diagnostic alerts.
- Manufacturer recall alerts.



Image: A woman driving a car, with a tablet mounted on the dashboard displaying the Vyncs application, illustrating driver safety monitoring.



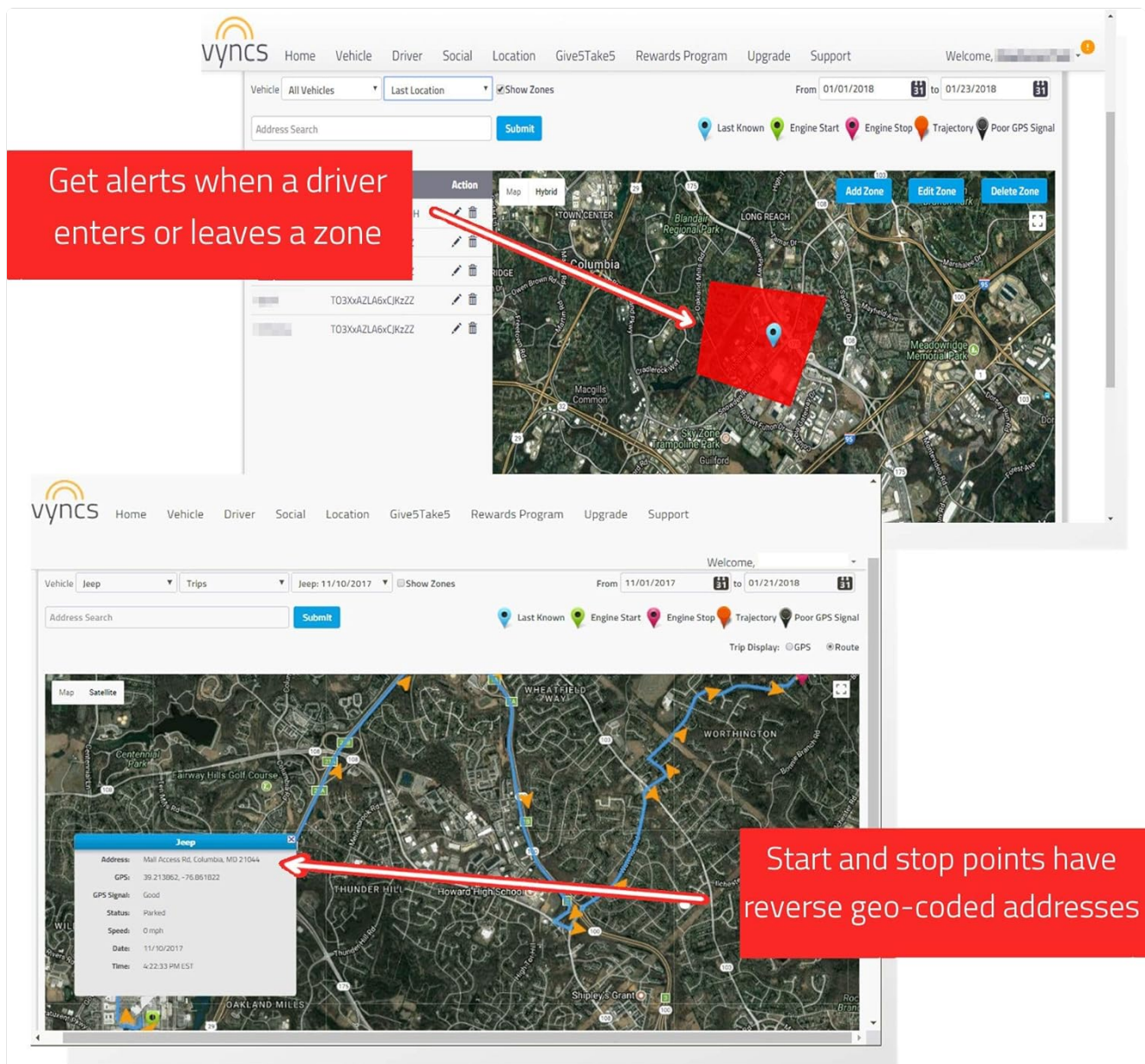


Image: The Vyncs app interface displaying a map with geofence zones and alerts, along with trip start and stop points.

## Vehicle Health Monitoring

The Vyncs device connects to your vehicle's computer via the OBD-II port to provide valuable health insights.

- **OBD Diagnostics:** Check engine lights and retrieve generic fault codes to understand potential vehicle issues.
- **Maintenance Reminders:** Receive alerts for scheduled maintenance based on mileage or time.
- **Battery and Engine Diagnostic Alerts:** Monitor battery voltage and receive alerts for low battery or other engine-related issues.
- **Manufacturer Recall Alerts:** Stay informed about any manufacturer recalls for your vehicle.

# Smart Fuel Management

*Spend Way Less on Gas.*

- Save money on gas with Vyncs and earn up to **free** roadside assistance & **free** 15 second GPS updates.
- Fuel report & emission test result predictions.
- Optimize your gas mileage and fuel consumption.
- Low fuel tank level alerts.
- Emission alerts.



Image: A mechanic inspecting a car engine with a laptop, symbolizing the vehicle health monitoring capabilities of the Vyncs device.

## Smart Fuel Management

Optimize your fuel consumption and save money with Vyncs' fuel management features.

- **Fuel Economy Reports:** Track your vehicle's fuel efficiency and identify ways to improve it.
- **Fuel Fill-up Tracking:** Automatically record fuel fill-ups (if supported by your car's OBD system).
- **Low Fuel Tank Level Alerts:** Receive notifications when your fuel level is low.
- **Emission Alerts:** Monitor vehicle emissions performance.



# No Monthly Fee Pricing

**+\$45.99 ONE-TIME ACTIVATION FEE\* INCLUDE**

## What You Will Get?

- ✓ 1 Vyncs link 4G device
- ✓ 1 global SIM card
- ✓ 1 year of data plan & services



**USA-Developed patented technology. USA-Based company.**

## Why Vyncs?

- Real-time 4G LTE GPS tracker
- Hourly location reporting
- Works in 200+ countries
- Track beyond the car with Vyncs Groups  
*Indoor & outdoor tracking; no other tracker has this*
- Collects data, analyzes it, and sends updates every 20 seconds
- Fuel reports, manufacturer recall, maintenance history
- Accident/Crash notification **New**
- Driving alerts, geofences, idle time, ignition-on alerts
- No monthly fee
- App supported on iOS & Android
- Speeding alerts with true speed limits shown on map
- No battery required  
*Safely draws power from your car.*

## 30-Day Free Trial!



**CHECK OUT VYNCS STORE** [amazon.com/vyncs](https://amazon.com/vyncs)

*\*Activation fee to be paid online during device registration*

Image: A close-up of a fuel pump nozzle, representing the smart fuel management features of the Vyncs system.

## MAINTENANCE

Regular maintenance of your Vyncs device is not required as it is powered by your vehicle's OBD-II port and has no internal battery to charge or replace. Ensure the device remains securely plugged into the OBD-II port for continuous operation.

For optimal performance of the Vyncs system, ensure your vehicle's OBD-II port is clean and free from debris. If you experience any issues with data reporting, first check the physical connection of the device.

## TROUBLESHOOTING

Problem	Possible Cause	Solution
No location updates or device offline	Device not properly plugged in; vehicle ignition off for extended period; poor cellular signal.	Ensure device is firmly seated in the OBD-II port. Drive the vehicle to a location with better cellular coverage. Note that location updates are hourly when ignition is off.

Problem	Possible Cause	Solution
Inaccurate speed or mileage data	Device calibration issue; vehicle-specific OBD-II protocol limitations.	Contact Vyncs customer support for assistance with calibration. Be aware that some vehicle models may have limitations on certain data points (e.g., fuel level for some Honda models).
App not displaying data correctly	App requires update; temporary server issue; internet connectivity problem on your mobile device.	Check for app updates in your app store. Verify your mobile device's internet connection. Try restarting the app.
Device tamper alert received unexpectedly	Device was briefly dislodged or removed.	Check the device's connection to the OBD-II port. If the alert persists without physical tampering, contact support.

## SPECIFICATIONS

Model Number	VYNCSLINK-001
Product Dimensions	2.4 x 1.9 x 0.9 inches
Item Weight	2.33 ounces
Connectivity Technology	4G Cellular
Power Source	Vehicle OBD-II Port (no battery needed)
Data Retention	Unlimited (with valid subscription)
Mapping Technology	Google Maps (Street & Satellite)
Supported Countries	200+ countries including USA, Canada, Puerto Rico, Mexico
Special Features	Real-time GPS, Speed Monitoring, Trip History, Geo-fencing, OBD Diagnostics, Fuel Economy, Accident/Impact Detection, No Monthly Fee (yearly service included)





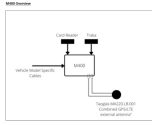
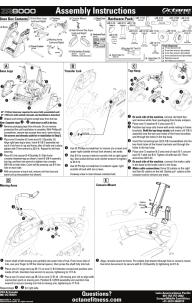
## WARRANTY AND SUPPORT

Vyncs offers a lifetime device performance when you have a valid plan. For specific warranty details and terms, please refer to the official Vyncs website or contact their customer support directly.

For technical support or inquiries, you can typically reach Vyncs customer service through their website's support portal or the contact information provided in the Vyncs app. They aim to respond to queries within 24-48 hours.

**Note:** Purchase only from authorized sellers (e.g., "Sold by Agnik" on Amazon) for valid warranty and SIM card data plan periods.

**30-Day Trial Period:** A 30-day trial period is typically offered, allowing you to evaluate the service.

<div><div>User guide</div><div>HERE LL03S LTE GPS Condition Tracker</div><div></div></div>	<div><div><a href="#">HERE LL03S LTE GPS Condition Tracker User Guide</a></div><div>User guide for the HERE LL03S LTE GPS Condition Tracker, detailing product overview, specifications, setup, configuration, troubleshooting, and regulatory information.</div></div>
<div><div>Red LED Diagnostic Instructions</div><div></div></div>	<div><div><a href="#">Eaton Red LED Diagnostic Instructions for Circuit Breakers</a></div><div>Learn how to interpret Red LED diagnostic codes on Eaton circuit breakers to identify fault types like Series Arc, Ground Fault, and Overvoltage. Includes step-by-step instructions for recalling trip codes.</div></div>
<div><div>REKA User Guide</div><div><div>BLUETOOTH TRACKER</div><div></div></div></div>	<div><div><a href="#">REKA Bluetooth Tracker User Guide</a></div><div>Comprehensive user guide for the REKA Bluetooth Tracker, covering setup, usage, features like location tracking and alarms, product care, technical specifications, and warranty information. Learn how to pair, name, and manage your tracker using the iSearching app.</div></div>
<div><div>VaporTEK</div><div><div>Installation, Setup and Troubleshooting Manual</div><div></div></div></div>	<div><div><a href="#">VaporTEK Installation, Setup and Troubleshooting Manual</a></div><div>Comprehensive guide for installing, setting up, and troubleshooting the Veeder-Root VaporTEK Stage II vapor recovery system, detailing its components like the pump, controller, and interface.</div></div>
<div><div>M400 User Manual</div><div></div></div>	<div><div><a href="#">Zipcar M400 User Manual - Device Operation and Specifications</a></div><div>Comprehensive user manual for the Zipcar M400 in-car telematics device. Covers major components, overview, radio capabilities (Bluetooth, 4G), GPS, vehicle data collection, remote control, product specifications, installation, antenna details, and FCC/IC compliance.</div></div>
<div><div>Assembly Instructions</div><div></div></div>	<div><div><a href="#">Octane Fitness ZR8000 Zero Runner Assembly Instructions</a></div><div>Detailed assembly instructions for the Octane Fitness ZR8000 Zero Runner elliptical trainer, including parts identification, step-by-step setup for base, transfer link, top hoop, moving arms, and console, with essential tools and troubleshooting tips.</div></div>