

## Manuals+

[Q & A](#) | [Deep Search](#) | [Upload](#)

[manuals.plus](#) /

- › [Mount-It!](#) /
- › [Mount-It! MI-509B TV Ceiling Mount Bracket Instruction Manual](#)

## Mount-It! MI-509B

# Mount-It! TV Ceiling Mount Bracket

MODEL: MI-509B INSTRUCTION MANUAL

## Introduction

This manual provides detailed instructions for the safe and proper installation, operation, and maintenance of your Mount-It! MI-509B TV Ceiling Mount Bracket. Please read all instructions carefully before assembly and use. Retain this manual for future reference.





Image: Mount-It! MI-509B TV Ceiling Mount Bracket with a television attached, suspended from a ceiling.

The Mount-It! MI-509B is a full-motion ceiling mount designed for flat panel LCD, LED, and OLED Plasma TVs up to 75 inches and weighing up to 110 pounds. It offers adjustable height, 360-degree rotation, and tilting capabilities to optimize your viewing experience.

## Safety Information

- **Weight Capacity:** Do not exceed the maximum weight capacity of 110 lbs (50 kg). Exceeding this limit may result in serious injury or property damage.
- **Screen Size:** This mount is designed for TVs between 32 and 75 inches. Ensure your TV's VESA pattern is compatible.
- **Structural Integrity:** The ceiling structure must be capable of supporting at least five times the weight of the TV and the mount combined. If unsure, consult a qualified professional.
- **Installation:** Follow all installation instructions carefully. Improper installation can lead to equipment damage or personal injury.
- **Tools:** Use appropriate tools for installation. Ensure all fasteners are securely tightened.
- **Children:** Keep children away from the installation area during assembly. Small parts may be a choking hazard.

- **Maintenance:** Periodically check that the mount is secure and all fasteners are tight.

## Package Contents

---

Verify that all components are present and undamaged before beginning installation. If any parts are missing or defective, contact Mount-It! customer support.

- Ceiling Plate
- Adjustable Pole Assembly
- TV Mounting Plate
- VESA Brackets (4 pieces)
- Hardware Kit (various screws, washers, spacers, anchors)
- Instruction Manual

## Setup and Installation

---

**Important:** Ensure you have identified the correct mounting location and ceiling type (wood stud, concrete, or vaulted ceiling) before proceeding. Two people are recommended for safe installation.

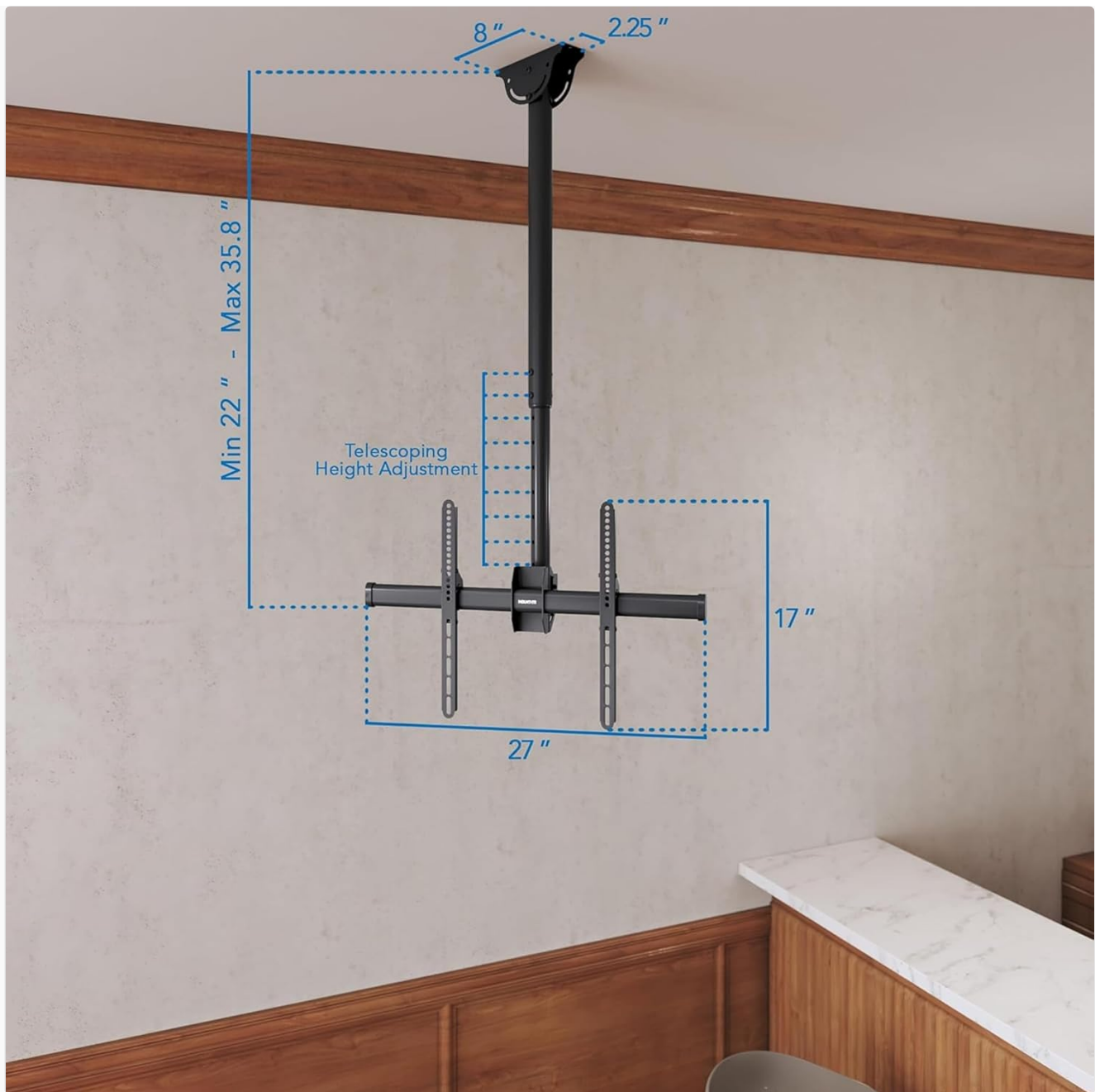


Image: Dimensional diagram of the ceiling mount, illustrating adjustable height from 22 to 35.8 inches and bracket width.

### Step 1: Prepare the Ceiling Plate

1. Locate the desired mounting position on your ceiling. Use a stud finder to locate wood studs or ensure the concrete ceiling is suitable for drilling.
2. Position the ceiling plate and mark the drilling points. For vaulted ceilings, the base allows up to 60 degrees of swivel to accommodate the angle.
3. Drill pilot holes according to the marked points and the type of ceiling material.
4. Secure the ceiling plate to the ceiling using the appropriate fasteners from the hardware kit. Ensure it is firmly attached.



THE PERFECT MOUNT FOR A VARIETY OF ENVIRONMENTS

Image: The ceiling mount shown installed on both a flat ceiling and a slanted ceiling, demonstrating its versatility.

## Step 2: Assemble the Pole

1. Attach the adjustable pole assembly to the ceiling plate. Ensure the locking mechanism is engaged.
2. Adjust the pole to the desired height (between 22 and 36 inches) and secure it using the provided bolts and nuts.



# HEIGHT ADJUSTABLE POLE FROM 22" TO 36"



## WORKS FOR BOTH FLAT AND SLANTED CEILINGS

Image: A visual representation of the mount's height adjustment feature, ranging from 22 to 36 inches.

### Step 3: Attach VESA Brackets to TV

1. Lay your TV face down on a soft, clean surface to prevent scratches.
2. Identify the VESA mounting holes on the back of your TV.
3. Select the appropriate screws, washers, and spacers from the hardware kit that fit your TV's VESA pattern.
4. Attach the VESA brackets to the back of your TV, ensuring they are level and securely fastened.



Image: Illustration of the VESA compatibility, showing adjustable arm brackets to fit various VESA patterns.

#### Step 4: Mount TV to Pole Assembly

1. With assistance, carefully lift the TV and hook the VESA brackets onto the TV mounting plate on the pole assembly.
2. Ensure the TV is properly seated and level.
3. Secure the TV to the mounting plate using the safety screws or locking mechanism provided.

#### Step 5: Cable Management

Utilize the cable management holes in the bracket plate and pole to route your power and HDMI cables for a clean and organized appearance.

### Operating Instructions

The Mount-It! MI-509B offers full motion flexibility to achieve optimal viewing angles.

- **Height Adjustment:** To adjust the height, loosen the securing bolts on the pole, slide the inner pole to the desired height (22-36 inches), and re-tighten the bolts securely.
- **Tilt Adjustment:** The TV can be tilted down up to 25 degrees. Loosen the tilt adjustment knobs or bolts on the TV mounting plate, adjust the screen to the desired angle, and re-tighten to secure.
- **Swivel/Rotation:** The mount allows for a full 360-degree rotation of the TV. Gently rotate the TV to the desired orientation. For slanted ceilings, the base offers up to 60 degrees of swivel.

# YOUR TV, YOUR ANGLE

Swivel, Tilt And Lock Into Your Perfect Position



Base Angle: Up to 60°



Leveling Range: 3°



Screen Tilt: 25°

FULL MOTION

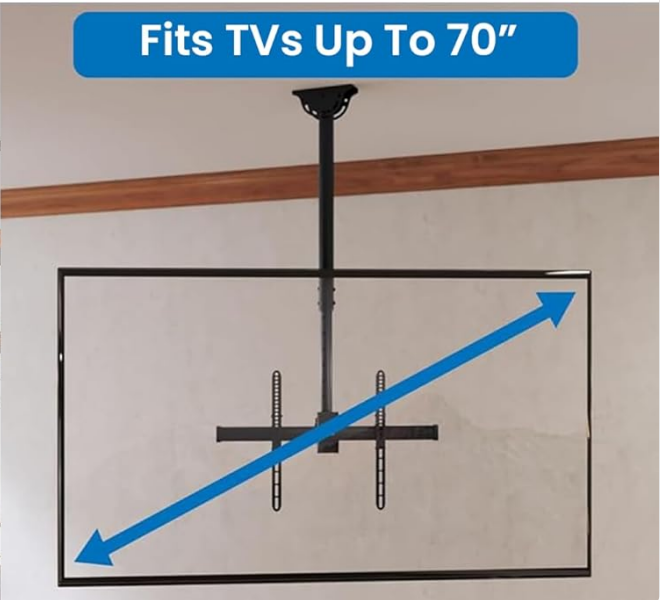


Image: Visual guide to the mount's full motion capabilities, including base angle, leveling range, and screen tilt.

## Maintenance

- **Cleaning:** Wipe the mount with a soft, dry cloth. Avoid abrasive cleaners or solvents that may damage the finish.
- **Periodic Checks:** Every few months, check all screws and bolts to ensure they remain tight and secure. Retighten if necessary.
- **Damage:** If any part of the mount appears damaged or worn, discontinue use and contact Mount-It! customer support for assistance.

## Troubleshooting

Problem	Possible Cause	Solution
TV is not level	Mounting plate or VESA brackets not aligned.	Adjust the leveling screws on the mounting plate or re-align VESA brackets on the TV.



Problem	Possible Cause	Solution
Mount feels unstable	Loose fasteners or inadequate ceiling support.	Check all bolts and screws for tightness. Ensure ceiling structure meets weight requirements. Consult a professional if needed.
Difficulty adjusting tilt/swivel	Adjustment knobs/bolts are too tight.	Loosen the relevant adjustment knobs or bolts slightly, make the adjustment, then re-tighten.
Missing parts	Packaging error.	Contact Mount-It! customer support for replacement parts.

## Specifications

Model Number	MI-509B
Brand	Mount-It!
Material	Alloy Steel
Color	Black
Compatible TV Sizes	32 - 75 inches
Weight Capacity	110 lbs (50 kg)
VESA Compatibility	200x200, 300x300, 400x200, 400x300, 400x400, 600x200, 600x300, 600x400 mm
Height Adjustment	22 - 36 inches (55.9 - 91.4 cm)
Tilt Angle	Up to 25 degrees downward
Swivel/Rotation	360 degrees (TV), up to 60 degrees (base for slanted ceilings)
Product Dimensions	30 x 14.5 x 6 inches (approximate, packaged)
Item Weight	0.01 ounces (This value seems incorrect from source, typical mount weight is several pounds)

## Warranty Information

Mount-It! products are backed by a limited warranty against defects in materials and workmanship. For specific warranty terms and conditions, please refer to the warranty card included with your product or visit the official Mount-It! website.

## Customer Support

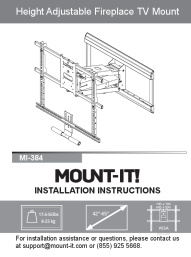
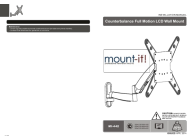

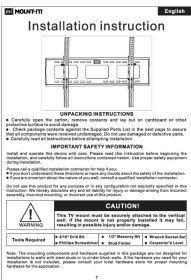
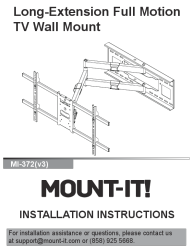
For technical assistance, missing parts, or warranty claims, please contact Mount-It! customer support. You can find

contact information and additional resources on the official Mount-It! website:

Visit the Mount-It! Store on Amazon

© 2023 Mount-It!. All rights reserved.

Related Documents - MI-509B

	<p><a href="#">Height Adjustable Fireplace TV Mount - MI-384 Installation Guide</a></p> <p>Comprehensive installation guide for the MOUNT-IT! MI-384 Height Adjustable Fireplace TV Mount, covering safety considerations, package contents, required tools, and step-by-step assembly for wood stud and concrete/brick walls.</p>
	<p><a href="#">Mount-It! MI-442 Counterbalance Full Motion LCD Wall Mount Installation Manual</a></p> <p>This installation manual provides detailed instructions for the Mount-It! MI-442 counterbalance full motion LCD wall mount. It includes a component checklist, warnings, and step-by-step guidance for mounting to various wall types, attaching the VESA plate, hanging the TV, and adjusting tension and display angles.</p>
	<p><a href="#">Mount-It! MI-4112 Full-Motion TV Wall Mount Installation Manual</a></p> <p>Detailed installation manual for the Mount-It! MI-4112 Full-Motion TV Wall Mount. Includes safety guidelines, parts list, dimensions, weight capacity, and step-by-step assembly instructions for wood stud and concrete/brick walls.</p>
	<p><a href="#">Mount-It! MI-303B TV Wall Mount Installation Guide</a></p> <p>Comprehensive installation instructions for the Mount-It! MI-303B TV wall mount. This guide covers unpacking, safety precautions, mounting the TV brackets to the TV, and attaching the wall plate to various wall types (brick, concrete, wood studs).</p>
	<p><a href="#">Long-Extension Full Motion TV Wall Mount Installation Guide (MI-372v3)</a></p> <p>Comprehensive installation instructions for the Mount-It! MI-372(v3) long-extension full-motion TV wall mount. Includes parts list, step-by-step assembly, wall mounting options, and adjustment guides.</p>

Height Adjustable Fireplace TV Mount



MI-384L

**MOUNT-IT!**  
INSTALLATION INSTRUCTIONS



For installation assistance or questions, please contact us at [support@mount-it.com](mailto:support@mount-it.com) or (855) 825-5888.

[MOUNT-IT! MI-384L Height Adjustable Fireplace TV Mount Installation Guide](#)

Comprehensive installation instructions for the MOUNT-IT! MI-384L Height Adjustable Fireplace TV Mount. Learn how to safely mount your TV above a fireplace, including hardware, tools, and adjustment procedures.


Documents - Mount-It! – MI-509B


**MOUNT-IT!**


MI-509B / MI-509B\_WHT  
Full Motion  
Ceiling TV Mount


This heavy-duty TV ceiling mount is the perfect solution for mounting your TV or display in unique environments. It is designed to optimize the viewing experience in any space, with its full motion capabilities and ability to be installed on a flat or slanted ceiling.

- Compatible with TVs between 32" and 70"
- Works great on flat ceilings and slanted walls
- Fits VESA patterns from 200 x 200 to 600 x 600
- Tilt, swivel and telescoping height adjustability features
- Available in black and white





  
Product Video

  
User Manual

MOUNT-IT.COM

Phone: 855.812.7670 • Fax: 858.762.2757 • Email: [sales@mount-it.com](mailto:sales@mount-it.com)

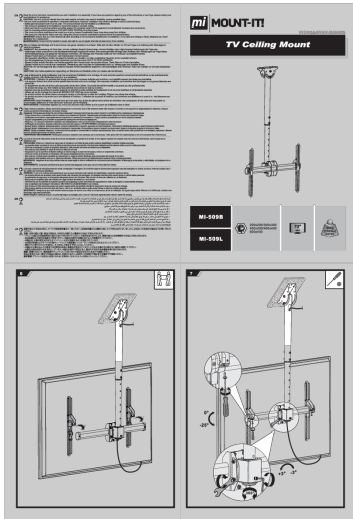
[\[pdf\] User Manual Specifications Datasheet Catalog](#)

MI 509B WHT Datasheet indd Full Motion Ceiling TV MountUser Manual Features Video Compatible with TVs between 32 and 70 Works great on flat ceilings slanted walls Fits VESA patterns from 200 x to 600 x a5ad651f 218b 409a 9be2 c99cb27d7216images thdstatic catalog Images a5 a5ad651f c99cb27d7216

|||

**MI-509B / MI-509B\_WHT Full Motion Ceiling TV Mount** This heavy-duty TV ceiling mount is the perfect solution for mounting your TV or display in unique environments. It is designed to optimize the viewing experience in any space, with its full motion capabilities and ability to be installed on a at...

lang:en score:27 filesize: 1.08 M page\_count: 2 document date: 2023-08-31

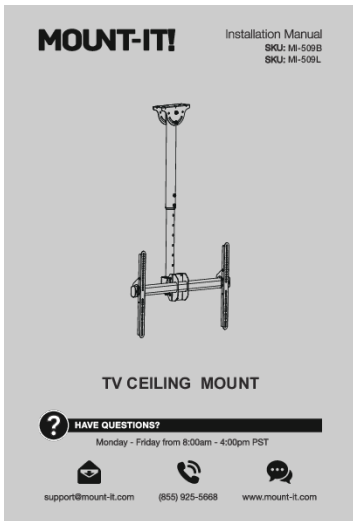


[\[pdf\]](#) User Manual

MI 509B 509L Manual Mount It! mi MOUNT IT! INSTALLATION MANUAL DE TV Ceiling Bitte vor Beginn der Montage und Zusammenbau das manual mount it pub media manuals

...

lang:en score:26 filesize: 8.17 M page\_count: 2 document date: 2018-09-27



[\[pdf\]](#) User Manual

MI 7610 MDS06 1 manual multi 15710 4435108 4225WHT Installation Assembly Flip Down Ceiling TV Mount It mmnt1038 4225WHTMount 4225WHT15710 mi 4225wht installation assembly 1secure img1 ag wfcdn dm document e25a7407 4930 4f05 a048 978cc7deee02 4225WHTInstallation And AssemblyMount Reviews Wayfair15710 115710 1assets 1v1secure 1bhphotovideo lit files 1233853 ||| ||| MI-509B MI-509L TV CEILING MOUNT Thank you for choosing Mount-It Mount-It Mount-It 2 COMPATIBLE VESA SIZES 200x200 300x300 400x200 400x400 600x400 PACKAGE CONTENTS COMPATIBLE WITH Screens UP TO 70 50kg 110lbs RATED A x1 Ceiling Bracket B x1 ||| MI-509B MI-509L TV CEILING MOUNT Thank you for choosing Mount-It Mount-It Mount-It 2 COMPATIBLE VESA SIZES 200x200 300x300 400x200 400x400 600x400 PACKAGE CONTENTS COMPATIBLE WITH Screens UP TO 70 50kg 110lbs RATED A x1 Ceiling Bracket B x1

**MI-509B MI-509L TV CEILING MOUNT** Thank you for choosing Mount-It Mount-It Mount-It 2 COMPATIBLE VESA SIZES 200x200 300x300 400x200 400x400 600x400 PACKAGE CONTENTS COMPATIBLE WITH Screens UP TO 70 50kg 110lbs RATED A x1 Ceiling Bracket B x1 Lower Pole C x2 VESA Arms E x2 Height ...

lang:en score:25 filesize: 14.67 M page\_count: 7 document date: 2022-04-12





[\[pdf\]](#) User Manual Specifications Datasheet

MI 509B WHT Datasheet indd Data Sheet Full Motion Ceiling TV Mount It! drive google file d

1xZjYt2bwvprJq20YqB44wlgC8TnFS6Ep view usp link |||

**MI-509B / MI-509B\_WHT Full Motion Ceiling TV Mount** This heavy-duty TV ceiling mount is the perfect solution for mounting your TV or display in unique environments. It is designed to optimize the viewing experience in any space, with its full motion capabilities and ability to be installed on a flat ...

lang:en score:25 filesize: 1.08 M page\_count: 2 document date: 2023-08-31



[\[pdf\]](#) Specifications Datasheet

MI 509B Full Motion Ceiling Mounting Bracket SAVE SPACE INCREASE THE FUNCTIONALITY A BETTER VIEWING EXPERIENCE Adjust the tilt to reduce glare and increase comfort datasheet mount it pub media datasheets

**MI-509B Full Motion Ceiling Mounting Bracket** SAVE SPACE INCREASE THE FUNCTIONALITY This adjustable TV ceiling mount allows you to conveniently mount your TV to any flat or vaulted ceiling. The fully adjustable design allows you to tilt and swivel in any direction giving you the flexibility to moun...

lang:en score:25 filesize: 2.23 M page\_count: 2 document date: 2017-08-14

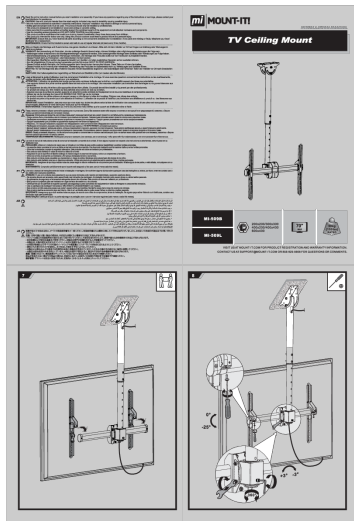


[\[pdf\]](#) User Manual

MI 7610 MDS06 1 manual multi 1109794 bhphotovideo lit files |||

**MI-509B MI-509L TV CEILING MOUNT** Thank you for choosing Mount-It Mount-It Mount-It 2 COMPATIBLE VESA SIZES 200x200 300x300 400x200 400x400 600x400 PACKAGE CONTENTS COMPATIBLE WITH Screens UP TO 70 50kg 110lbs RATED A x1 Ceiling Bracket B x1 Lower Pole C x2 VESA Arms E x2 Height ...

lang:en score:23 filesize: 14.67 M page\_count: 7 document date: 2022-04-12



#### [\[pdf\]](#) User Manual

MI 509B PLB CE946 01S 509L 01L manual multi admin Mount it! Walmart Canada drive google file d 11uxEGdKBrMiA6iq4v1aR2snjKlqFuz F view usp sharing |||

...

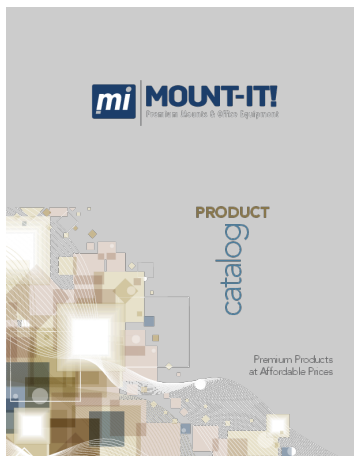
lang:en **score:20** filesize: 11.28 M page\_count: 2 document date: 2020-04-09



#### [MOUNT-IT! 2020 Product Catalog](#)

Explore the comprehensive 2020 Product Catalog from MOUNT-IT!, showcasing a wide range of mounting solutions and office furniture. This catalog features TV mounts, monitor mounts, ergonomic desks, laptop accessories, tablet solutions, and various office essentials designed to enhance productivity and comfort in any environment.

lang:en **score:15** filesize: 24.9 M page\_count: 113 document date: 2020-12-30



#### [\[pdf\]](#) User Manual Accessories Catalog

catalog Mount It! Manual Handle Lift Swivel Arm 360° Number of Monitors 1 Landscape to Portrait Yes Monitor Tilt 90 Degrees 20 Height Adjustability 17 It Product Catalog mount it pub media catalog PRODUCT Premium Products at Affordable Prices Table of Contents TV Mounts..... ... /- 20 28.3 -37 75x75mm 200x200mm Steel China 66 lbs MOUNT-IT.NET product catalog 21 MODEL: **MI-509B** MODEL: MI-509L TV MOUNTS TV CEILING UNDER-CABINET MOUNTS SPECIFICATIONS Swivel Tilt Ext...

lang:en **score:15** filesize: 43.86 M page\_count: 112 document date: 2017-08-29



#### [\[pdf\]](#) Catalog

Mount It ProAV Catalog mount it pub media

PROFESSIONAL AUDIO VISUAL catalog Table of Contents Wall

Mounts..... ... 13.7670 Fax: 858.762.3757 Email: sales mount-it.com

MOUNT-IT.COM Pro Audio Visual Catalog 15 **MI-509B** Ceiling TV Mount Bracket 16

Pro Audio Visual Catalog MOUNT-IT.COM Tel: 858.413.7670 Fax:...

lang:en **score:14** filesize: 42.47 M page\_count: 36 document date: 2019-05-14



[\[pdf\]](#) Catalog

MI AV Catalog 2018 indd catalog Mount It PRO mount it pub media |||

2018 PRO AUDIO VISUAL catalog Table of Contents Wall

Mounts..... Fax: 858.762.3757 Email: Sales mount-it.com

MOUNT-IT.COM 2018 Pro Audio Visual Catalog 15 **MI-509B** Ceiling TV Mount

Bracket 16 2018 Pro Audio Visual Catalog MOUNT-IT.COM Tel: 858.413.767...

lang:en **score:14** filesize: 40.91 M page\_count: 35 document date: 2018-05-10