

MENABO MENFIX016G_ONE

Menabo Tema Aluminum Roof Rack Instruction Manual

For Mini One (5-Door Estate) 2014 Onwards

1. PRODUCT OVERVIEW

This manual provides detailed instructions for the installation, operation, and maintenance of your Menabo Tema Aluminum Roof Rack. Designed for the Mini One (5-door estate) model from 2014 onwards, this high-quality roof rack system offers a secure and versatile solution for transporting various items. The Menabo Tema roof rack is a complete system, including all necessary fixing elements, and features double corrosion protection. Its robust aluminum construction ensures durability and stability.



Figure 1: The Menabo Tema Aluminum Roof Rack system, showing two silver aluminum bars with black end caps and mounting feet, ready for installation.

2. SETUP AND INSTALLATION

The Menabo Tema roof rack is supplied with a vehicle-specific fitting kit designed for mounting on the designated fixing points of your Mini One (5-door estate) from 2014 onwards. It is crucial to follow these instructions carefully to ensure safe and correct installation.

Important Note: This fitting kit is only suitable for vehicles that have pre-existing mounting points or devices on the roof. Please verify your vehicle's roof type before proceeding with installation.

2.1 Checking for Fixed Points



Figure 2: Illustration showing a vehicle roof without designated fixed points (left) and an incorrect roof type for this product (right, marked with an 'X'). This roof rack requires specific mounting points.

Ensure your vehicle's roof has the necessary fixed points for installation. If your roof appears similar to the "NO" example in Figure 2, this roof rack is not compatible.

2.2 General Installation Steps

1. **Unpack Components:** Carefully unpack all components and verify against the parts list provided in the separate detailed assembly instructions.
2. **Identify Bars:** Identify the front (X) and rear (Y) bars. The front bar is typically longer or has specific markings.
3. **Positioning the Bars:** Place the front (X) and rear (Y) bars onto the designated fixed points on your vehicle's roof. Refer to Figure 3 for general placement.

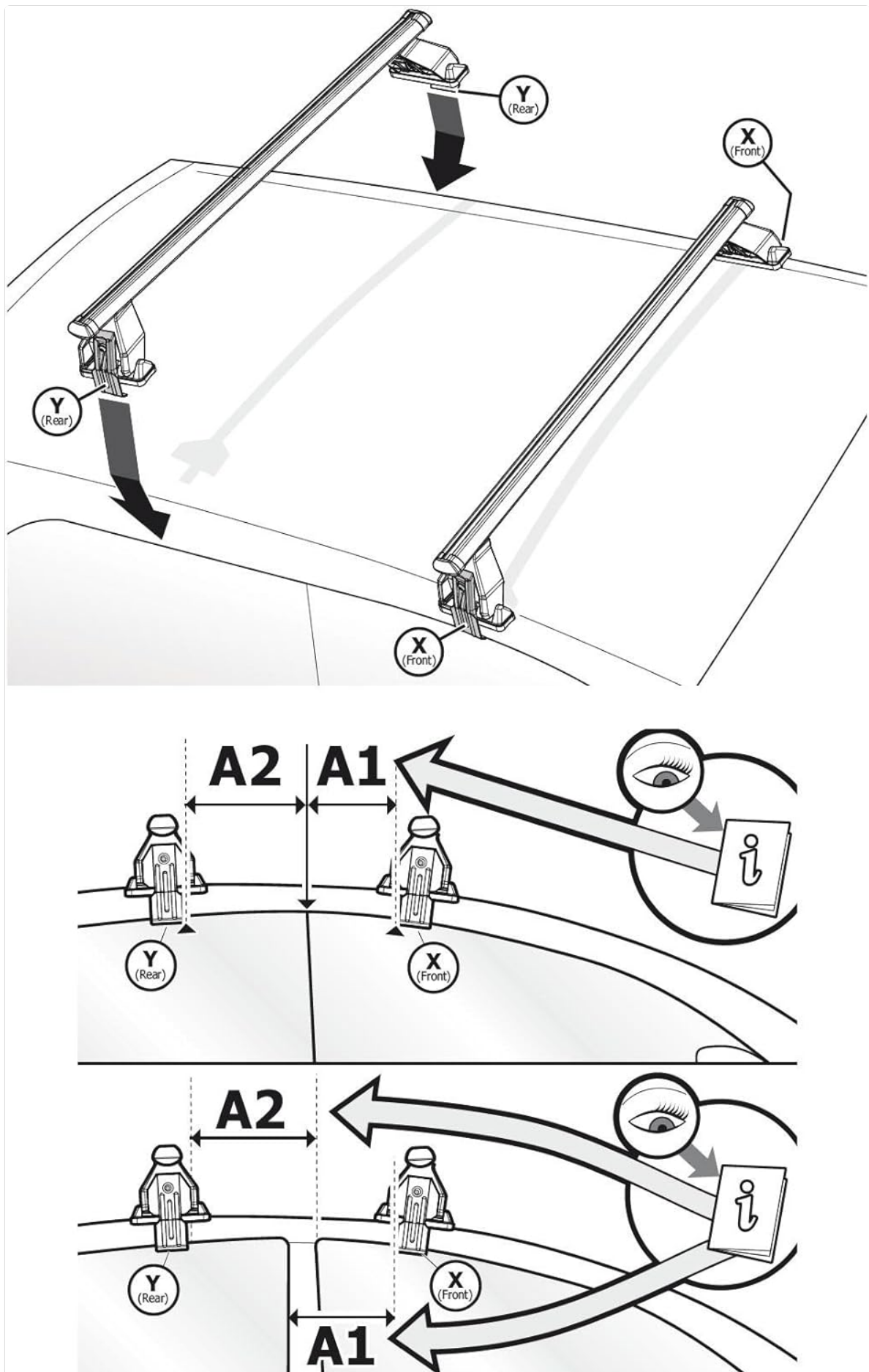


Figure 3: Diagram illustrating the placement of the front (X) and rear (Y) roof rack bars onto the vehicle's roof, indicating the direction of attachment to the fixed points.

4. **Adjusting Spacing:** Adjust the spacing of the mounting feet on each bar to align with your vehicle's fixed points. Ensure the bars are centered and parallel.

5. **Measure Distances:** Measure the distances A1 and A2 as indicated in Figure 4. These measurements are critical for correct and safe installation. Consult the separate detailed instructions for specific values for your Mini One model.

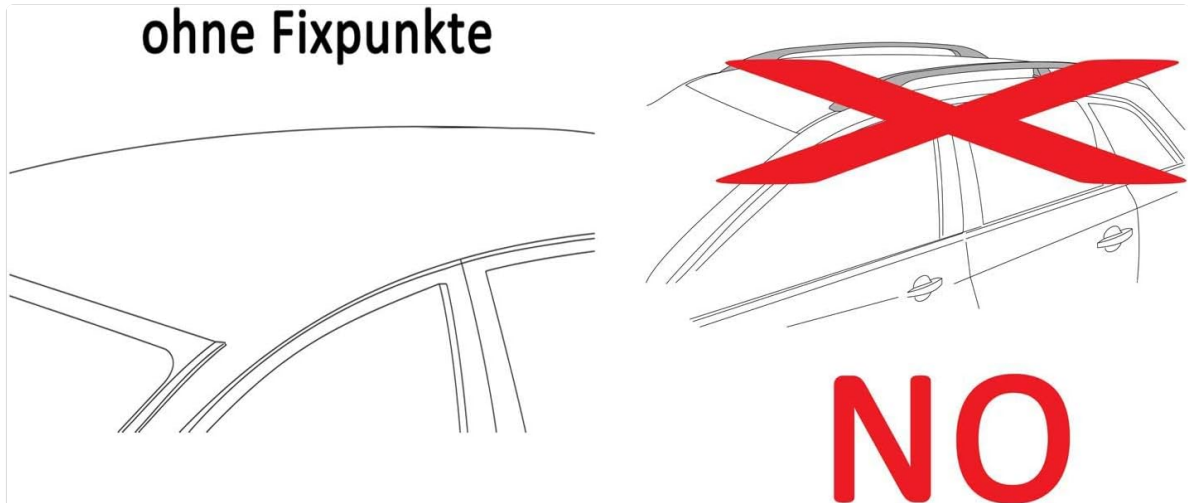


Figure 4: Diagram showing critical measurements A1 (distance from front fixed point to front edge of roof) and A2 (distance between front and rear fixed points) for precise roof rack positioning. The eye icon indicates to pay close attention to these measurements.

6. **Secure Fasteners:** Tighten all fasteners according to the torque specifications provided in the detailed assembly instructions. Do not overtighten.
7. **Final Check:** After installation, gently shake the roof rack to ensure it is securely attached and does not move. Re-check all fasteners after the first few kilometers of driving.

For comprehensive, vehicle-specific instructions, please refer to the detailed assembly guide included with your product. This guide contains specific measurements and torque settings for your Mini One (5-door estate) from 2014 onwards.

3. OPERATING INSTRUCTIONS

Once installed, your Menabo Tema roof rack provides a stable platform for various transport accessories. It is designed to accommodate all common accessories from known manufacturers, such as bicycle carriers, ski carriers, roof baskets, and roof boxes.

- **Load Capacity:** Adhere strictly to the maximum load capacity of 50 kg for the roof rack, and also consider your vehicle's maximum roof load capacity as specified by the manufacturer. Never exceed the lower of these two limits.
- **Load Distribution:** Distribute the load evenly across the roof rack. Place heavier items in the center and secure all items firmly to prevent shifting during transit.
- **Accessory Attachment:** Follow the installation instructions provided with any accessories (e.g., bike racks, roof boxes) you attach to the Menabo Tema roof rack.
- **Driving Behavior:** Be aware that the presence of a roof rack and load can affect your vehicle's handling, fuel consumption, and overall height. Drive cautiously, especially in crosswinds, when cornering, and under low overhead clearances.
- **Regular Checks:** Periodically check the security of the roof rack and any attached accessories, especially during long journeys or after driving on rough roads.

4. MAINTENANCE

Proper maintenance will extend the lifespan of your Menabo Tema roof rack and ensure its continued safe operation.

- **Cleaning:** Clean the aluminum bars and plastic components regularly with mild soap and water. Avoid abrasive cleaners or solvents that could damage the finish or materials.
- **Inspection:** Periodically inspect all components for signs of wear, damage, or corrosion. Pay close attention to the mounting feet, fasteners, and rubber seals.
- **Fastener Check:** Re-tighten all mounting bolts and screws as necessary, especially after prolonged use or exposure to vibrations.
- **Storage:** If the roof rack is not in use for an extended period, it is recommended to remove it from the vehicle and store it in a dry, protected environment to prevent unnecessary wear and exposure to elements.

5. TROUBLESHOOTING

This section addresses common issues you might encounter with your roof rack.

- **Rack Feels Loose:**
 - Ensure all mounting bolts are tightened to the specified torque.
 - Verify that the roof rack is correctly seated on the vehicle's fixed points.
 - Check for any damaged components that might prevent a secure fit.
- **Excessive Wind Noise:**
 - Ensure all rubber strips and end caps are properly installed on the aluminum bars.
 - Check if any accessories attached to the roof rack are causing aerodynamic drag.
 - Consider removing the roof rack when not in use to eliminate noise and improve fuel efficiency.
- **Difficulty Attaching Accessories:**
 - Ensure the accessories are compatible with T-slot or clamp-on systems, depending on your roof rack model.
 - Refer to the accessory's instruction manual for specific attachment procedures.

If you encounter persistent issues not covered here, please contact customer support.

6. SPECIFICATIONS

Brand:	MENABO
Model Name:	Tema
Model Number:	MENFIX016G_ONE
Material:	Aluminum
Vehicle Compatibility:	Mini One (5-door estate) from 2014 onwards
Maximum Load Capacity:	50 kg
Bar Dimensions (L x W x H):	1120 x 31 x 50 mm

Corrosion Protection:

Double protection

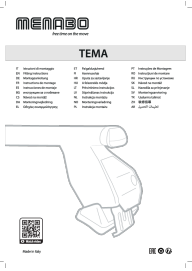
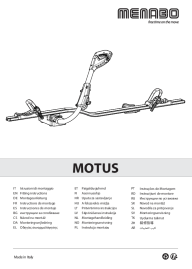
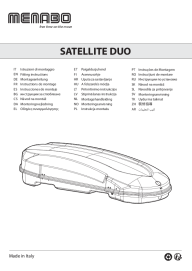
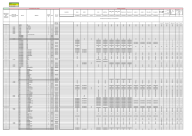
7. WARRANTY AND SUPPORT

For specific warranty information, please refer to the documentation included with your purchase or visit the official MENABO website. Keep your proof of purchase for any warranty claims.

If you require technical assistance, have questions about installation, or need to report a defect, please contact your retailer or MENABO customer support. Provide your product model number (MENFIX016G_ONE) and purchase details when seeking support.

© 2023 MENABO. All rights reserved. This manual is for informational purposes only.

Related Documents - MENFIX016G_ONE

	<p>MENABO TEMA Roof Bar System Installation Guide</p> <p>Comprehensive installation instructions for the MENABO TEMA roof bar system, covering fixing kits, bar kits, and support kits. Includes diagrams and multilingual guidance.</p>
	<p>Menabo Motus Bike Rack: Installation Guide and Specifications</p> <p>Comprehensive installation guide for the Menabo Motus bike rack, detailing component identification, assembly steps, bicycle loading, specifications, and safety precautions.</p>
	<p>Menabo Satellite Duo Roof Carrier Assembly Instructions</p> <p>Comprehensive guide for assembling and fitting the Menabo Satellite Duo roof carrier system. Includes detailed parts list, step-by-step visual instructions translated into text, dimensions, and safety loading information.</p>
	<p>Vehicle Compatibility Guide for Bike Racks</p> <p>A comprehensive guide detailing the compatibility of various car models with different bike rack systems, including specific roof types and vehicle features.</p>



Comprehensive guide to installing and using Menabò Alcor and Acrux series bike racks. Includes parts lists, assembly instructions, specifications, and safety guidelines for various models.



Comprehensive fitting and installation guide for the Menabo MANIA 320 MARATHON 320 roof box. Includes parts list, assembly steps, safety guidelines, and specifications. Learn how to safely mount and use your Menabo cargo box.