

## SEVERIN HV 7144

# SEVERIN HV 7144 Combi Handheld Vacuum Cleaner User Manual

MODEL: HV 7144

## 1. Introduction

Thank you for choosing the SEVERIN HV 7144 Combi Handheld Vacuum Cleaner. This manual provides essential information for the safe and efficient operation, maintenance, and troubleshooting of your new appliance. Please read these instructions carefully before first use and keep them for future reference.

The SEVERIN HV 7144 is a versatile cordless handheld vacuum cleaner designed for both dry and wet cleaning tasks, ideal for quick clean-ups in your home or car.

## 2. Safety Instructions

Always observe the following safety precautions to prevent injury or damage to the appliance:

- Read the entire instruction manual before operating the appliance.
- This appliance is not suitable for vacuuming ashes, glowing embers, or pet hair.
- Do not use the appliance to vacuum flammable or explosive liquids.
- Keep the appliance away from children and ensure they do not play with it.
- Only use the provided charging adapter.
- The appliance features protection against overcharging and discharging to ensure battery longevity and safety.
- Do not immerse the appliance or its charging base in water or other liquids.
- Ensure the filter is correctly installed before use.

## 3. Product Overview

The SEVERIN HV 7144 is a powerful and compact handheld vacuum cleaner. Key features include:

- Cordless operation for maximum flexibility.

- Suitable for both dry and wet vacuuming.
- Bagless system with a permanent filter for hygienic cleaning.
- Long-lasting 7.4 V lithium-ion battery providing up to 18 minutes of runtime.
- Includes a 12 V charging cable for car use.
- Comes with three interchangeable attachments: a crevice nozzle with an additional brush, and a rubber nozzle for liquids.



Image 1: The SEVERIN HV 7144 Combi Handheld Vacuum Cleaner, showing its compact design and transparent dust container.

# **SEVERIN**



Image 2: Diagram highlighting key features: strong suction power, bagless design, suitable for dry & wet dirt, and includes 4-in-1 accessories.

## **4. Setup**

### **4.1 Initial Charging**

Before first use, fully charge the vacuum cleaner. The initial charge time is approximately 10 hours.

1. Connect the charging adapter to the wall base.
2. Place the vacuum cleaner onto the wall base. Ensure the charging indicator light illuminates.
3. For car charging, connect the 12 V charging cable to your car's cigarette lighter socket and the vacuum cleaner. Note: The vacuum cleaner cannot be used while charging via the car adapter.

### **4.2 Wall Mounting (Optional)**

The included wall bracket allows for convenient storage and charging.

1. Choose a suitable location near a power outlet.
2. Use the provided screws and wall plugs to securely mount the bracket to the wall.
3. Route the charging cable through the designated opening in the bracket.

# HYGIENISCH SAUBER – OHNE FOLGEKOSTEN

Mit beutellosem System,  
Permanent-Filter & einfacher  
Entleerung per Knopfdruck.



Image 3: The wall mount with integrated charging function, providing practical storage and ensuring the vacuum is always ready for use.

## 5. Operating Instructions

### 5.1 Power On/Off

Press the power button located on the handle to turn the vacuum cleaner on or off.

### 5.2 Dry Vacuuming

For general dry debris, attach the crevice nozzle or the crevice nozzle with brush for hard-to-reach areas or sensitive surfaces like keyboards.



## WANDHALTERUNG MIT LADEFUNKTION INKLUSIVE

Praktisch verstaut & jederzeit einsatzbereit –  
inkl. Schrauben und Dübel.

Image 4: The vacuum cleaner effectively removing crumbs and dust from a keyboard, suitable for sensitive surfaces.

### 5.3 Wet Vacuuming

To vacuum liquids, attach the rubber nozzle. Ensure the dust container is empty before wet vacuuming. Do not exceed the 'MAX' fill line for liquids.

# MAXIMALE SAUGKRAFT FÜR JEDE HERAUSFORDERUNG

Entfernt durch seine Power selbst tiefsitzenden Schmutz, Krümel und Tierhaare mühelos – für eine rundum gründliche Reinigung.



Image 5: The vacuum cleaner demonstrating its ability to pick up spilled liquids using the specialized rubber nozzle.

## 5.4 Using Attachments

The HV 7144 comes with a 4-in-1 accessory set:

- **Furniture Brush:** For upholstery and delicate surfaces.
- **Crevice Nozzle with Brush:** For narrow gaps and corners, with an integrated brush for stubborn dirt.
- **Rubber Nozzle:** Specifically designed for vacuuming liquids.
- **12 V Car Charging Cable:** For convenient charging in your vehicle.

## 4-IN-1 ZUBEHÖR

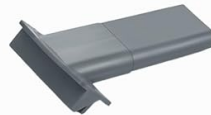
Mit verschiedenen Aufsätzen zur Reinigung  
und Ladekabel für unterwegs.



**MÖBEL**  
BÜRSTE



**FUGENDÜSE**  
MIT BÜRSTE



**GUMMI**  
DÜSE



**12 V KFZ**  
LADEKABEL

Image 6: The complete 4-in-1 accessory set, including a furniture brush, crevice nozzle with brush, rubber nozzle, and 12V car charging cable.



## FLEXIBEL SAUGEN, WO DU WILLST

Mit starkem 7,4 V Li-Ionen Akku  
und 12 V Kfz-Ladekabel –  
perfekt für Zuhause &  
unterwegs.



Image 7: The vacuum cleaner being used to clean a car interior, highlighting its flexibility for both home and on-the-go use with the 12V car adapter.

## 6. Maintenance

### 6.1 Emptying the Dust Container

For optimal suction power and hygiene, empty the dust container regularly, especially after wet vacuuming.

1. Ensure the vacuum cleaner is switched off.
2. Press the release button to detach the dust container from the main unit.
3. Carefully remove the filter.
4. Empty the contents into a waste bin.

### 6.2 Cleaning the Filter

The permanent filter should be cleaned regularly to maintain performance.

1. Remove the filter from the dust container.
2. Tap the filter gently to dislodge dry dust.
3. For thorough cleaning, rinse the filter under running water.



4. Allow the filter to air dry completely before reinserting it into the dust container. Do not use the vacuum cleaner with a wet filter.



Image 8: Illustration of the hygienic, bagless system with a permanent filter that can be easily removed and cleaned.

### 6.3 General Care

Wipe the exterior of the vacuum cleaner with a damp cloth. Do not use abrasive cleaners or solvents.

## 7. Troubleshooting

If you encounter issues with your SEVERIN HV 7144, refer to the following table:

Problem	Possible Cause	Solution
Vacuum cleaner does not turn on.	Battery is discharged.	Charge the battery for at least 10 hours.
Reduced suction power.	Dust container is full. Filter is clogged. Nozzle is blocked.	Empty the dust container. Clean or replace the filter. Check and clear any blockages in the nozzle or hose.

Problem	Possible Cause	Solution
Charging indicator light does not illuminate.	Charger not properly connected. Faulty charger or battery.	Ensure charger is securely plugged into both the wall outlet and the charging base/vacuum. Contact customer support if the issue persists.
Water leaks during wet vacuuming.	Dust container overfilled. Rubber nozzle not properly attached.	Do not exceed the 'MAX' fill line for liquids. Ensure the rubber nozzle is securely fitted.

## 8. Specifications

Feature	Specification
Brand	SEVERIN
Model Number	HV 7144
Product Dimensions	39 x 11 x 14 cm
Item Weight	1.24 kg
Capacity (Dust/Liquid)	0.1 liters
Power/Wattage	148 watts
Voltage	7.4 Volts (Battery)
Noise Level	76 dB
Runtime	18 minutes
Filter Type	Cartridge (Permanent)
Power Source	Battery Powered
Special Features	Cordless, Wet & Dry Function, Wall Mount, 12V Car Charger

## 9. Warranty and Support

SEVERIN products are manufactured to high-quality standards. For information regarding warranty terms and conditions, please refer to the warranty card included with your product or visit the official SEVERIN website.

For technical support, spare parts, or service inquiries, please contact SEVERIN customer service through their official channels. Contact details can typically be found on the SEVERIN website or in the product packaging.

