

Manuals+

[Q & A](#) | [Deep Search](#) | [Upload](#)

manuals.plus /

- › [WALI](#) /
- › [WALI Universal Tabletop TV Stand \(TVS001\) Instruction Manual](#)

WALI TVS001

WALI Universal Tabletop TV Stand

MODEL: TVS001

Introduction

Thank you for choosing the WALI Universal Tabletop TV Stand. This manual provides essential information for the safe and correct assembly, operation, and maintenance of your TV stand. Please read these instructions thoroughly before installation and retain them for future reference.

Important Safety Information

- **Weight Capacity:** Do not exceed the maximum weight capacity of 110 lbs (50 kg). Overloading can result in serious injury or property damage.
- **TV Size:** This stand is designed for TVs between 22 and 65 inches. Ensure your TV falls within this range.
- **VESA Compatibility:** Verify your TV's VESA mounting pattern is compatible with the stand's range (75x75mm to 800x500mm).
- **Surface Stability:** Always place the TV stand on a stable, level, and sturdy surface capable of supporting the combined weight of the stand and your television.
- **Children Safety:** Keep children away from the stand during assembly. Do not allow children to climb on or play with the stand or TV.
- **Proper Assembly:** Follow all assembly instructions carefully. If you have any doubts or encounter difficulties, seek professional assistance.
- **Regular Checks:** Periodically check that all screws and connections are secure.

Package Contents

Please ensure all components are present and undamaged before beginning assembly. If any parts are missing or damaged, contact WALI customer support.

- WALI TV Stand (Black) x 1
- Mounting Hardware Kit x 1 (includes various screws, washers, and spacers)
- User Manual x 1

Product Specifications

Feature	Specification
Brand	WALI
Model Number	TVS001
TV Size Compatibility	22" - 65"
Weight Capacity	110 lbs (50 kg)
VESA Compatibility	75x75mm to 800x500mm
Mounting Type	Tabletop Mount
Material	Alloy Steel
Color	Black
Height Adjustment	2 levels

Installation Guide

Follow these steps to assemble your WALI Universal Tabletop TV Stand.

1. **Step 1: Assemble the Base and TV Bracket**
Attach the vertical TV brackets to the base feet using the provided screws and tools. Ensure all connections are tightened securely. The design allows for two height levels for the vertical brackets.

Product Details

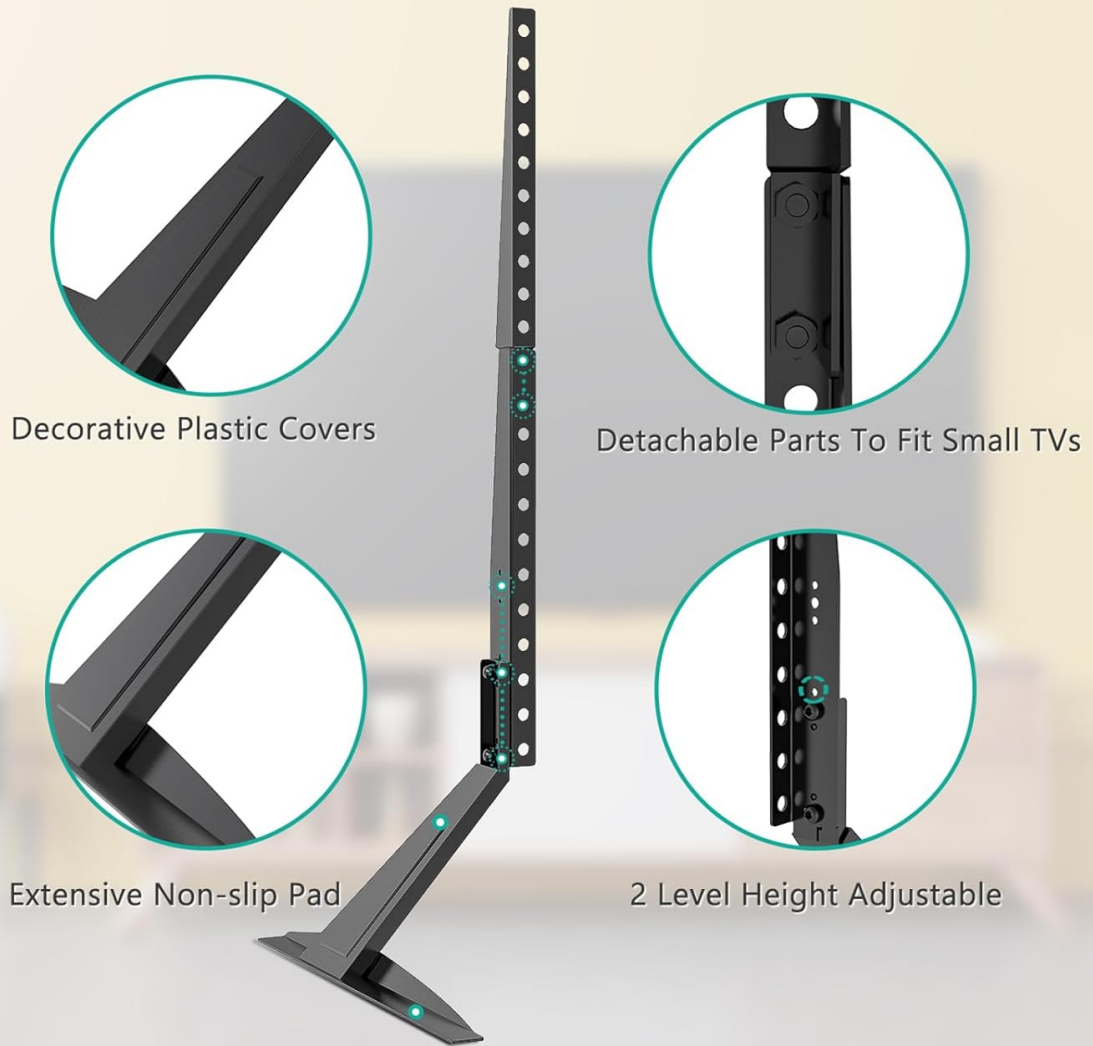


Image: Product Details - Components of the WALI TV Stand.

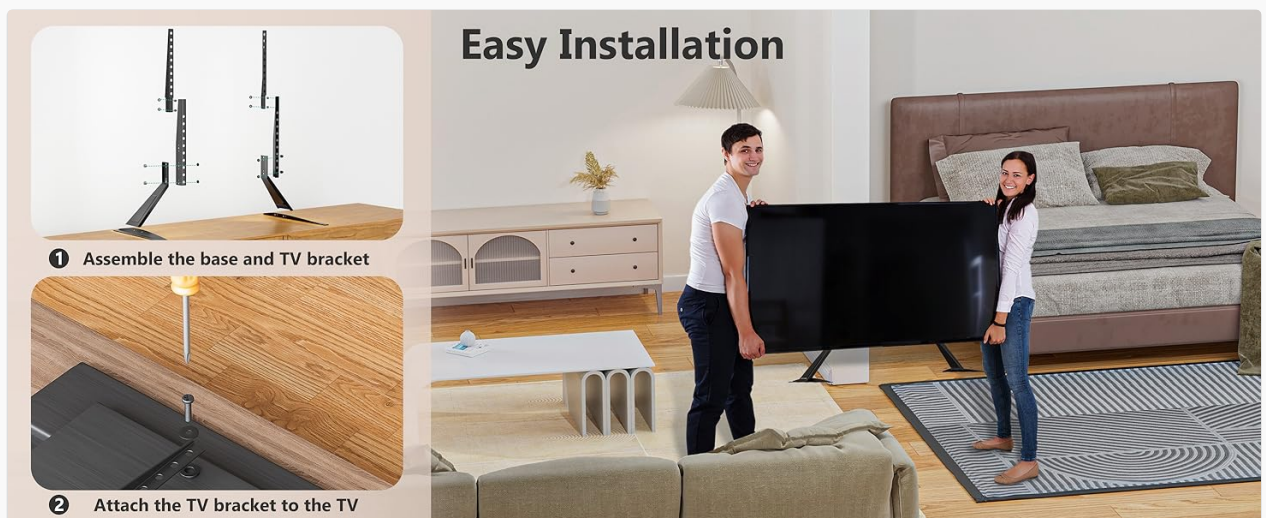


Image: Easy Installation Steps.

2. Step 2: Attach the TV Bracket to the TV

Carefully place your TV face down on a soft, clean surface to prevent scratches. Identify the VESA mounting holes on the back of your TV. Select the appropriate screws, washers, and spacers from the hardware kit that fit your TV's mounting holes. Attach the assembled TV brackets to the back of your television. Ensure the

brackets are centered and securely fastened.

FITS 22" TO 65" LCD FLAT SCREEN TV

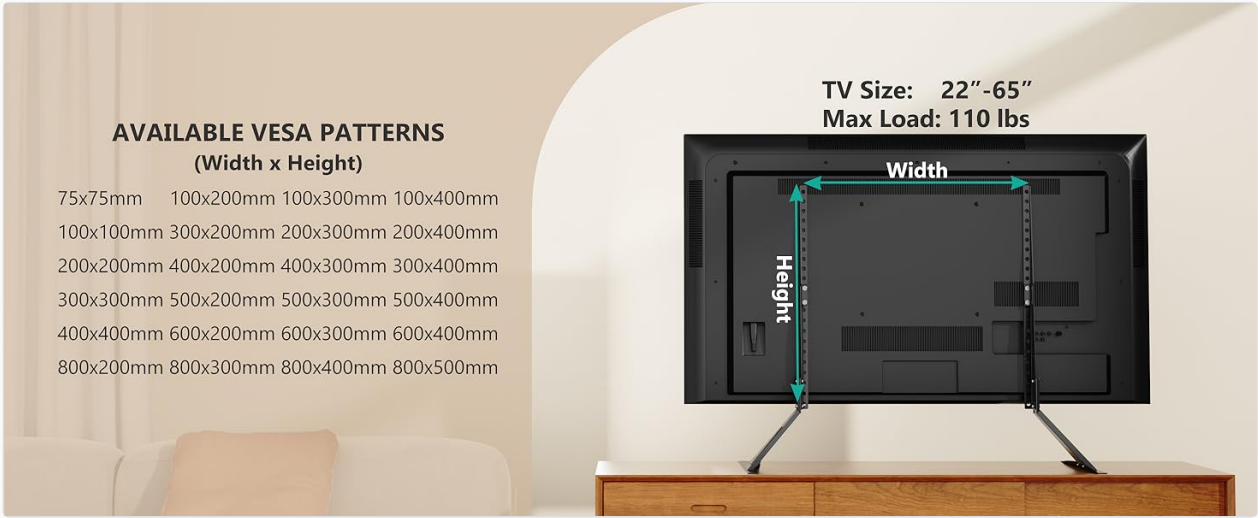
Available VESA Patterns



(Width x Height)

75x75mm	100x200mm	100x300mm	100x400mm
100x100mm	300x200mm	200x300mm	200x400mm
200x200mm	400x200mm	400x300mm	300x400mm
300x300mm	500x200mm	500x300mm	500x400mm
400x400mm	600x200mm	600x300mm	600x400mm
800x200mm	800x300mm	800x400mm	800x500mm

Image: Available VESA Patterns.



AVAILABLE VESA PATTERNS (Width x Height)

75x75mm 100x200mm 100x300mm 100x400mm
100x100mm 300x200mm 200x300mm 200x400mm
200x200mm 400x200mm 400x300mm 300x400mm
300x300mm 500x200mm 500x300mm 500x400mm
400x400mm 600x200mm 600x300mm 600x400mm
800x200mm 800x300mm 800x400mm 800x500mm

TV Size: 22"-65"
Max Load: 110 lbs

Width
Height

Image: VESA Compatibility and Max Load.

3. Final Placement

With assistance, carefully lift the television with the attached stand and place it on your desired stable surface. The stand features non-slip pads on the base to prevent scratching and enhance stability.



Image: WALI Universal Tabletop TV Stand with TV.

Usage and Adjustments

The WALI TVS001 stand offers flexibility in TV placement and height.

- **Height Adjustment:** The vertical TV brackets provide two levels of height adjustment. This allows you to position your TV higher or lower on the stand to achieve optimal viewing angles or to accommodate soundbars and other devices beneath the screen. To adjust the height, you will need to detach the TV from the stand, reposition the vertical brackets to the desired height setting, and reattach the TV.
- **Placement:** Ensure the stand is placed on a flat, stable surface. The non-slip pads on the feet protect your furniture and provide additional stability.

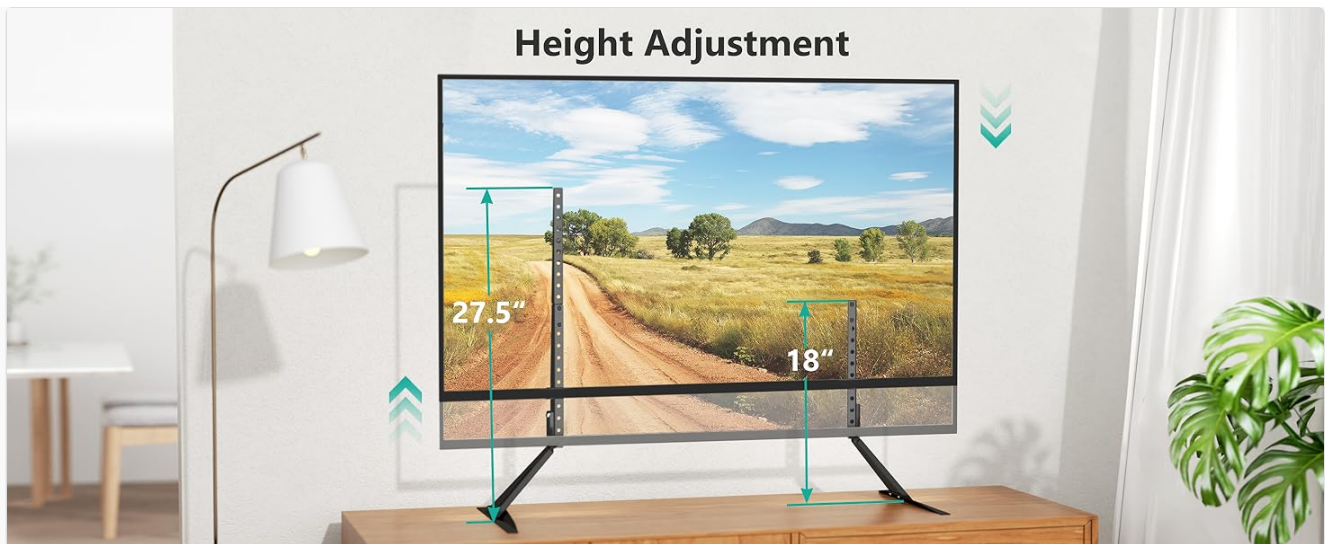


Image: Height Adjustment Feature.

Maintenance

- **Cleaning:** Wipe the stand with a soft, dry cloth. Avoid using abrasive cleaners or solvents that could damage the finish.
- **Inspection:** Periodically inspect all screws and connections to ensure they remain tight and secure. Re-tighten if necessary.
- **Damage:** If any part of the stand becomes damaged, discontinue use and contact customer support for replacement parts or advice.

Troubleshooting


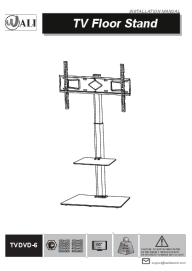
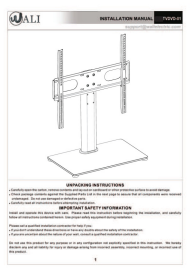
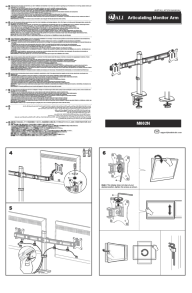

- **Stand feels unstable:**
 - Ensure all screws are tightened securely.
 - Verify the TV's weight and size are within the stand's specifications.
 - Confirm the stand is placed on a completely flat and stable surface.
- **TV does not fit the VESA pattern:**
 - Double-check your TV's VESA dimensions against the stand's compatibility range (75x75mm to 800x500mm).
 - Ensure you are using the correct screws and spacers from the hardware kit for your specific TV model.
- **Difficulty during assembly:**
 - Refer back to the step-by-step installation guide and diagrams.
 - Ensure components are oriented correctly as shown in the illustrations.
 - Do not force parts together. If a part does not fit, re-examine the instructions.

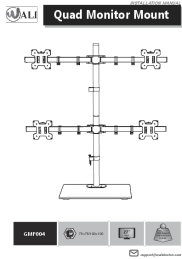
Warranty and Customer Support

WALI is committed to providing quality products and excellent customer service. For any questions, missing parts, or technical assistance, please contact our experienced and friendly US-based customer support team, available 7 days a week.

Please refer to the product packaging or WALI's official website for specific warranty details and contact information.

Related Documents - TVS001

	<p>WALI Universal Table Top TV Stand Installation Manual</p> <p>Installation guide for the WALI Universal Table Top TV Stand (TVS001/TVS001-W), covering unpacking, safety, and step-by-step assembly instructions for mounting TVs up to 65 inches.</p>
	<p>WALI TVDVD-6 Floor TV Stand Installation Manual</p> <p>Comprehensive installation manual for the WALI TVDVD-6 Floor TV Stand. This guide provides step-by-step instructions, a detailed parts list, and essential safety warnings for assembling and mounting your TV.</p>
	<p>WALI TVDVD-01 Installation Manual</p> <p>Installation manual for the WALI TVDVD-01 universal TV stand. Provides step-by-step instructions for assembly, mounting brackets to a TV, and attaching the security wire.</p>
	<p>WALI M002N Articulating Monitor Arm Installation Guide</p> <p>Installation manual for the WALI M002N Articulating Monitor Arm. This guide provides step-by-step instructions for mounting the arm to a desk using clamp or grommet methods, assembling the arm segments, and attaching a monitor via VESA mounting. Includes parts list and safety information.</p>
	<p>WALI Monitor Stand ECS002 Installation Manual and Safety Guide</p> <p>Comprehensive installation manual and safety guide for the WALI ECS002 monitor stand. Learn how to safely assemble and use your monitor stand.</p>



[WALI GMF004 Quad Monitor Mount Installation Manual](#)

Comprehensive installation guide for the WALI GMF004 Quad Monitor Mount. This manual provides step-by-step instructions, a parts list, and safety warnings for assembling and installing your four-monitor desk stand.