

ILIFE PX-B010

ILIFE PX-B010 Li-ion Battery Power Pack Instruction Manual

For ILIFE V3s Pro, V5s Pro, and V8s Robotic Vacuum Cleaners

1. INTRODUCTION

This manual provides detailed instructions for the safe and correct installation, operation, and maintenance of your new ILIFE PX-B010 Li-ion Battery Power Pack. Please read this manual thoroughly before attempting to replace the battery in your ILIFE robotic vacuum cleaner. Proper installation ensures optimal performance and extends the lifespan of your device.

2. SAFETY INFORMATION

Observe the following safety precautions to prevent damage to the battery, the vacuum cleaner, or personal injury:

- Do not disassemble, open, or shred the battery pack.
- Do not expose the battery to heat or fire. Avoid storage in direct sunlight.
- Do not short-circuit the battery pack. Do not store battery packs haphazardly in a box or drawer where they may short-circuit each other or be short-circuited by other metal objects.
- Do not remove the battery pack from its original packaging until required for use.
- Do not subject battery packs to mechanical shock.
- In the event of a battery leaking, do not allow the liquid to come into contact with the skin or eyes. If contact has been made, wash the affected area with copious amounts of water and seek medical advice.
- Do not use any charger other than that specifically provided for use with the equipment.
- Dispose of the battery pack properly according to local regulations.

3. PRODUCT OVERVIEW

The ILIFE PX-B010 is a high-quality Li-ion replacement battery designed to restore the cleaning performance of your compatible ILIFE robotic vacuum cleaner. It provides reliable power for extended cleaning sessions.



Image: The ILIFE PX-B010 Li-ion Battery Power Pack, showing its blue casing and connector wires.

3.1 Compatibility

This battery is compatible with the following ILIFE robotic vacuum cleaner models:

- ILIFE V3s Pro
- ILIFE V5s Pro
- ILIFE V8s

Note: This battery is **not** compatible with ILIFE A9, A7, or A4s models.

3.2 Package Contents

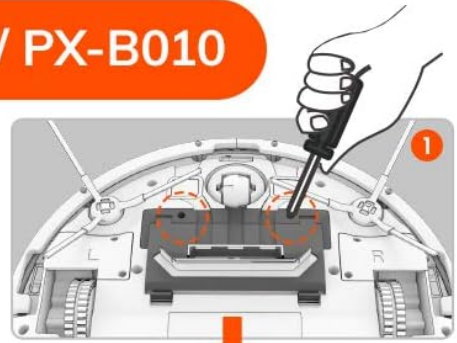
- 1 x ILIFE PX-B010 Li-ion Battery Power Pack

4. INSTALLATION

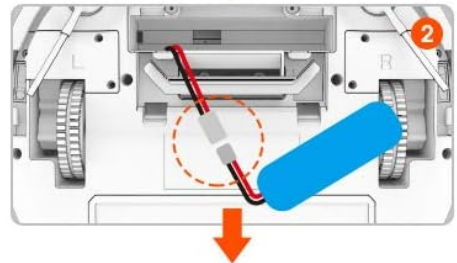
Follow these steps carefully to replace the battery in your ILIFE robotic vacuum cleaner. Ensure the vacuum is powered off and disconnected from its charging base before beginning.

Battery replacement process / PX-B010

❶ Disassemble the screw on the battery cover and removes the cover.



❷ Disconnect the wire, and take out the battery from the vacuum.



❸ Connect the wire of the new battery to the wire of the vacuum.



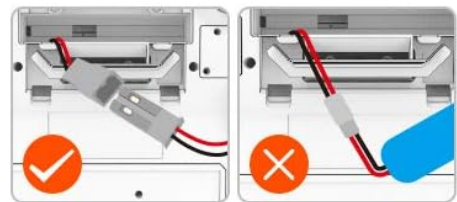
Attention !

- **Instruction(√)**

The red wire of the vacuum should be connected with the red wire of the battery. (as shown in the figure)

- **Wrong(×)**

The black wire of the vacuum connect with the red wire of the battery. (as shown in the figure)



❹ Assemble the battery cover and the screw.

Image: Visual guide illustrating the four steps of the battery replacement process for the ILIFE robotic vacuum cleaner.

4.1 Step-by-Step Replacement

1. **Disassemble the Battery Cover:** Locate the screw on the battery cover at the bottom of your robotic vacuum. Use a screwdriver to loosen and remove the screw, then carefully lift off the battery cover.
2. **Disconnect the Old Battery:** Gently disconnect the wire connector of the old battery from the vacuum's port. Carefully remove the old battery from its compartment.
3. **Connect the New Battery:** Take the new ILIFE PX-B010 battery. Connect its wire to the corresponding port inside the vacuum. Ensure the connection is secure. **Attention:** The red wire of the vacuum should be connected with the red wire of the battery. Incorrect connection (e.g., black wire to red wire) can cause damage.
4. **Assemble the Battery Cover:** Place the new battery into the compartment. Align the battery cover and secure it with the screw you removed in Step 1.

5. OPERATING INSTRUCTIONS

After installing the new battery, follow these guidelines for optimal performance.

5.1 Initial Charging

For the first use, place your robotic vacuum on its charging base and allow it to charge completely. A full charge

typically takes several hours. Refer to your vacuum cleaner's original manual for specific charging indicators.

5.2 Normal Use

Once fully charged, your robotic vacuum is ready for operation. The new battery should provide extended run times. Always return the vacuum to its charging base after each cleaning cycle to ensure it is ready for the next use.

6. MAINTENANCE

Proper maintenance of your battery can significantly extend its lifespan.

6.1 Battery Care

- Avoid fully discharging the battery frequently.
- Keep the vacuum and battery away from extreme temperatures (both hot and cold).
- Ensure the charging contacts on both the vacuum and the charging base are clean.

6.2 Storage

If you plan not to use your robotic vacuum for an extended period, fully charge the battery before storing it. Store the vacuum in a cool, dry place. It is recommended to charge the battery every 3-6 months to prevent deep discharge.

7. TROUBLESHOOTING

If you encounter issues after battery replacement, refer to the table below:

Problem	Possible Cause	Solution
Vacuum does not power on after battery replacement.	Battery not connected properly or not charged.	Check battery connection (ensure red wire to red wire). Place vacuum on charging base for initial charge.
Short run time after charging.	Battery not fully charged or incorrect charging procedure.	Ensure vacuum is charging correctly. Allow for a full charge cycle. If issue persists, contact support.
Vacuum beeps continuously.	Indicates a battery or charging error.	Verify battery connection. Clean charging contacts. Refer to your vacuum's original manual for specific error codes.

8. SPECIFICATIONS

Technical specifications for the ILIFE PX-B010 Li-ion Battery Power Pack:

Feature	Specification
Battery Type	Li-ion
Voltage	14.4V
Capacity	2600 mAh
Model Number	ILIFEBP03 / PX-B010

Feature	Specification
Weight	190 Grams

9. WARRANTY AND SUPPORT

ILIFE provides customer support for its products. For warranty information, please refer to the documentation included with your original robotic vacuum cleaner or contact ILIFE customer service directly.

9.1 Contact Information

- **US Customer Service:** 1-800-631-9676 (Mon-Fri: 9:00 AM - 5:00 PM CST)
- **US Email Support:** support@iliferobot.com
- **Official Website:** www.iliferobot.com
- **Other Regions:** Please refer to the product packaging or official website for regional contact details.