

American Lighting ALC2-32-WH

American Lighting LED Complete 2 Under Cabinet Fixture

MODEL: ALC2-32-WH USER MANUAL

1. Introduction

This manual provides detailed instructions for the installation, operation, and maintenance of your American Lighting LED Complete 2 Under Cabinet Fixture, model ALC2-32-WH. This 32-inch, 120-Volt dimmable fixture provides warm white LED lighting with a low-profile design, ideal for various indoor applications.



Image 1.1: American Lighting LED Complete 2 Under Cabinet Fixture (ALC2-32-WH).

2. Important Safety Information

WARNING: These products may represent a possible shock or fire hazard if improperly installed or

attached in any way. Products should be installed in accordance with these instructions, current electrical codes, and/or the current National Electrical Code (NEC).

- Read all instructions before beginning. Save these instructions for future use.
- To reduce the risk of fire, electric shock, or injury to persons, pay close attention to this manual and stay within its guidelines when using this product.
- **CAUTION:** To reduce the risk of electric shock or injury to persons, do not operate fixture with missing or damaged lens or wiring compartment cover.
- **CAUTION:** To reduce the risk of electric shock or injuries to persons, do not operate without end connector cover(s) in place for any molex ports/connectors not in use.
- **WARNING CAUTION:** RISK OF FIRE: Keep fixtures away from curtains and other combustible materials.
- Suitable for indoor dry locations only.
- Do not exceed the maximum load of 400 watts when interconnecting fixtures.
- Not intended for recessed installation in ceilings or soffits.
- LEDs are bright! Do not look directly at LED light source.
- Do not touch LEDs.
- There are no serviceable parts inside the LED module.
- For cleaning, use a soft, dry or damp cloth. Do not use harsh chemicals or abrasives.

3. Setup and Installation

The LED Complete 2 fixture can be hardwired directly via a rear access door, or hardwired indirectly via the Hardwire Junction Box (sold separately), or powered by a 120V receptacle (power cord sold separately). Multiple fixtures can be linked together.

3.1 Mounting the Fixture

1. Determine locations for each fixture. For hardwire installations, connect supply wires via knockouts before mounting.
2. Use a Phillips head screwdriver or driver bit to tighten captive mounting screws and secure fixture to an appropriate mounting surface.



INSTALLATION INSTRUCTIONS

ALC2 Series

**⚠ WARNING**

These products may represent a possible shock or fire hazard if improperly installed or attached in any way. Products should be installed in accordance with these instructions, current electrical codes, and/or the current National Electric Code (NEC).

⚠ WARNING

To reduce the risk of fire, electric shock or injury to persons, make sure that the electrical power to the system is disconnected at the source prior to installation or any servicing.

⚠ WARNING

Caution: Injury to persons and damage to the fixture and/or mounting surface may result if the fixture is pulled from the surface. To reduce the likelihood of such injury or damage, mount on a surface that is mechanically sound.

IMPORTANT SAFETY INFORMATION

- Read all instructions before beginning. Save these instructions for future use.
- To reduce the risk of fire, electric shock, or injury to persons, pay close attention to this manual and stay within its guidelines when using this product.
- **CAUTION:** To reduce the risk of electric shock or injuries to persons, use only insulated staples or plastic ties to secure cords and only route/secure cords to that they will not be pinched or damaged when the cabinet is pushed to the wall.
- **CAUTION:** To reduce the risk of electric shock or injuries to persons, do not operate fixture with missing or damaged lens or wiring compartment cover.
- **CAUTION:** To reduce the risk of electric shock or injuries to persons, do not operate without end connector cover(s) in place for any molex ports/connectors not in use.
- **WARNING! CAUTION - RISK OF FIRE:** Keep fixtures away from curtains and other combustible materials.
- Suitable for indoor dry locations only.
- Do not exceed the maximum load of 400 watts when interconnecting fixtures.
- Not intended for recessed installation in ceilings or soffits
- LEDs are bright! Do not look directly at LED light source.
- Do not touch LEDs.
- There are no serviceable parts inside the LED module.
- For cleaning, use a soft, dry or damp cloth. Do not use harsh chemicals or abrasives.

PRE-INSTALLATION NOTES:

LED Complete 2 fixtures can be hardwired directly via rear access door, or hardwired indirectly via the Hardwire Junction Box, or powered by a 120V receptacle. Fixtures can be powered by an adjacent fixture using linking cables. Determine installation method and purchase necessary accessories separately. Available Accessories (sold separately) include **ALC-BOX:** 120V Hardwire Junction Box **ALC-PC6:** 120V AC Power Cord (6ft length), and **ALC-EX:** Interconnectable linking/jumper cable (6" and 12" lengths). This product is suitable for use in dimming circuits. It is compatible with most standard TRIAC, CL, ELV and MLV dimmers (5-100% light control).

CONNECTING POWER VIA SUPPLY WIRES THROUGH REAR ACCESS DOOR (See Figures 1-4):

The rear access door is located in the center of the back of the fixture housing. It has its own knockout for quick connection to supply wires, foregoing the need to remove the lens cover and open the wiring compartment.

1. Remove knockout using a hammer or punch, then loosen the screw that secures the rear access door using a Philips head screwdriver or driver bit. See Figure 1.
2. Install the 3/8" cable connector (included) for the supply wire following National Electric Code and local codes through this knockout on the access door. See Figure 2. Use 14AWG or 12AWG wires. AC should be protected by circuit breaker or fuse.
3. Strip back jacket on supply wires to 3/8" and use push-in wire connectors inside housing to connect the wires, matching polarity (Black to Black = Hot, White to White = Neutral, Yellow/Green to Bare Wire = Ground) through knockout so that push-in connectors are positioned on the housing side of the access door. See Figure 3.
4. Replace rear access door and tighten retaining screw. Be sure that the wires are not pinched or damaged by any part of the housing or the cover. See Figure 4.

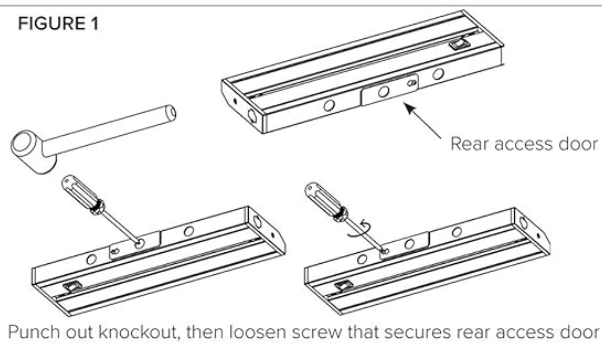
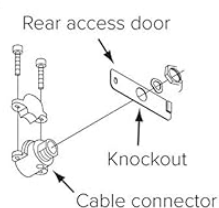
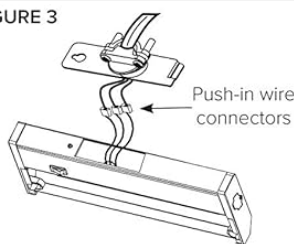
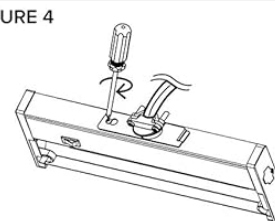
FIGURE 1**FIGURE 2****FIGURE 3****FIGURE 4**

Image 3.1: Mounting and Interconnecting options for the fixture.

3.2 Connecting Power via Rear Access Door (Direct Wire)

This method is for direct hardwire installations where the wiring enters the fixture through the rear access door.

1. Remove the rear access door located in the center of the back of the fixture housing.
2. Punch out knockout, then loosen screw that secures rear access door.
3. Using a 3/8" cable connector (not included), supply wire (14AWG or 12AWG wire) through the knockout.
4. Strip back jacket on supply wires to 3/8" and use push-in connectors to wire the fixture: Black to Black

(Hot), White to White (Neutral), Green/Yellow to Bare Wire (Ground).

5. Replace rear access door and tighten retaining screw.



Image 3.2: Wiring through the rear access door.

3.3 Connecting Power via Hardwire Junction Box (ALC-BOX)

For installations requiring a junction box (sold separately), follow these steps:

1. Turn off power at the electrical service panel.
2. Remove junction box cover and screws.
3. Prepare flat, non-metallic cable (NM-2C+Ground) or armored cable (BX) by stripping conductor ends approximately 3/8".
4. For installation, mount the junction box to the wall.
5. Affix the junction box to the underside of the cabinet with captive screws provided.
6. Connect supply wires to the push-in connectors inside the junction box: Black to Hot, White to Neutral, Green to Ground.
7. Insert the jumper cord (sold separately) or direct end-to-end connector (supplied with fixture) into the appropriate electrical port of the wire junction box.
8. Ensure all fixtures connected to the junction box are properly installed and all open electrical ports on the module ends and fixtures are safely covered.
9. Restore circuit power at the electrical service panel.



INSTALLATION INSTRUCTIONS

ALC2 Series

**MOUNTING FIXTURE:**

1. Determine locations for each fixture. For hardwire installations, connect supply wires via knockouts before mounting.
2. Use a Philips head screwdriver or driver bit to tighten captive mounting screws and secure fixture to an appropriate mounting surface.

CONNECTING POWER VIA ALC-PC6 POWER CORD:

ALC-PC6 (optional 120V power cord, sold separately) has a polarized plug (one blade is wider than the other) as a feature to reduce the risk of electric shock. This plug will fit in a polarized outlet only one way. If the plug does not fit fully in the outlet, reverse the plug. If it still does not fit, contact a qualified electrician. Never use with an extension cord unless the plug can be fully inserted. Do not alter plug.

1. Position fixture in desired location and use a Philips head screwdriver or driver bit to tighten captive mounting screws in order to secure the fixture to an appropriate mounting surface.
2. Remove the side port cover and insert the power cord into side port labeled "input" until fully seated.

INTERCONNECTING FIXTURES (SEE FIGURE 5):

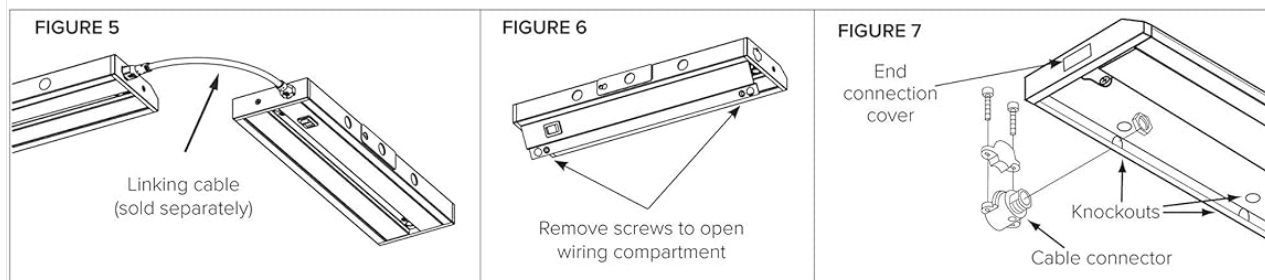
Interconnecting via linking/jumper cable: To interconnect nearby fixtures, remove the adjacent port covers and utilize the ALC-EX linking cable (sold separately) as shown in Figure 5. If needed, linking cables can be interconnected to make longer lengths.

Interconnecting via end-to-end linking connector: To interconnect fixtures directly to each other (end-to-end), utilize the in-line connector (included with each fixture) by removing adjacent port covers and inserting fully.

CONNECTING POWER VIA SUPPLY WIRES THROUGH HOUSING KNOCKOUTS (See Figures 6-7):

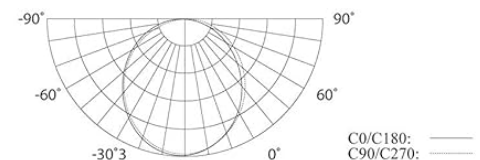
This type of installation is less common and typically only done when the rear access door cannot be utilized.

1. Open wiring compartment by removing screws at each end and lifting cover from housing body. See Figure 6.
2. Punch out whichever knockout is best suited for connection to 120V supply wires. Knockouts are located along back and top of housing. See Figure 7.
3. Install cable connector and connect fixture wires following National Electric Code and/or local building code requirements. Use minimum 18AWG solid copper wires. AC supply should be 120V protected by circuit breaker or fuse.
4. Attach line voltage AC supply wires to fixture lead wires: Black to Black/Hot, White to White/Neutral and Yellow/Green (Ground) to Green or bare wire inside the fixture. Secure each connection using push-in wire connectors provided on the fixture lead wire. If your system has no ground wire, consult a qualified electrician before proceeding with the installation. Note: Electric shock, overheating, low or no light output, and shortened fixture life can result if proper grounding is not done.
5. Replace the wiring compartment cover, securing with the existing retaining screws. Note: Be sure that the wires are not pinched or damaged by any part of the housing or the cover.
6. Follow directions above for mounting fixture.

**5- YEAR LIMITED PRODUCT WARRANTY**

This product is warranted to be free from defects in material and workmanship for a period of five years from the date of purchase. Products that prove to be defective during this period will be either repaired (i.e. replacement of defective electronics, defective parts of the fixture housing, lens, wiring, switching or lamp sockets; excluding the lamp) or replaced, at the discretion of American Lighting, Inc. Claims for defective products must be submitted to the retail location from which the product was purchased within the warranty period. Upon submission of proper return claim documentation and product to American Lighting, Inc. by the retailer, American Lighting, Inc. reserves the right to inspect the product for misuse or abuse. Claims for indirect or consequential damages or for product that, in American Lighting Inc's opinion has been misused will be denied. This is a warranty of product reliability only and not a warranty of merchantability or fitness for a particular purpose. American Lighting, Inc. shall have no liability whatsoever in any event for payment of incidental or consequential damages, including, without limitations, installation costs and damages for personal injury and property. These products may represent a possible shock or fire hazard if improperly installed or altered in any way. This warranty applies only to product that has been properly installed in accordance with instruction sheet and current local codes and/or the National Electrical Code. Warranty does not apply to any product that has been improperly installed or in situations where components have been altered in any way.

For questions, comments, technical assistance and/or repair parts, please call toll free at: 1-800-285-8051 (M-F 8am – 5pm, MST)

LIGHT DISTRIBUTION:

Model #	Amperage	Wattage
ALC2-8	0.025	3
ALC2-12	0.033	4
ALC2-18	0.05	6
ALC2-24	0.067	8
ALC2-32	0.091	11
ALC2-40	0.117	14

Image 3.3: Direct wire junction box installation diagram.

3.4 Interconnecting Multiple Fixtures

Multiple fixtures can be linked together using linking cables or inline connectors (sold separately).

- **Via Linking Cable:** To interconnect nearby fixtures, remove the adjacent port covers and utilize the ALC-EX linking cable (sold separately) to connect.
- **Via End-to-End Connector:** To interconnect fixtures directly to each other, use the in-line connector (included with each fixture) by removing adjacent port covers and inserting fully.

4. Operating Instructions

The American Lighting LED Complete 2 fixture is dimmable. To operate the dimming function, connect the fixture to a compatible 120V dimmer switch (sold separately). The fixture supports 5-100% dimming with most standard 2-wire and CL dimmers.

4.1 Compatible Dimmers

For optimal performance, use dimmers compatible with LED lighting. Examples of compatible dimmers include:

- Lutron Diva DVCL-153P (Universal CFL/LED/Incandescent)
- Lutron Diva DVELV-300P (Electronic Low Voltage (ELV))
- Lutron Sureslide 6613 (Magnetic Low Voltage (MLV))

Note: Dimmer performance may vary. Always refer to the dimmer manufacturer's instructions for more detailed information regarding performance and compatibility.

5. Maintenance

The LED Complete 2 fixture requires minimal maintenance. Ensure power is off before any cleaning or inspection.

- **Cleaning:** Use a soft, dry, or slightly damp cloth to clean the exterior of the fixture. Do not use abrasive cleaners, solvents, or harsh chemicals, as these can damage the finish or electrical components.
- **LED Module:** The LED module is non-removable and contains no serviceable parts. Do not attempt to open or repair the LED module.
- **Lens:** The full-length acrylic lens diffuses light evenly. Keep the lens clean for optimal light output.

6. Troubleshooting

If you experience issues with your LED Complete 2 fixture, consult the following troubleshooting guide:

Problem	Possible Cause	Solution
Fixture does not light up	No power to the fixture. Loose wiring connection. Faulty switch or dimmer.	Check circuit breaker and wall switch. Verify all wiring connections are secure. Test switch/dimmer with another device or replace if necessary.

Problem	Possible Cause	Solution
Light flickers or dims inconsistently	Incompatible dimmer switch. Loose wiring. Overloaded circuit.	Ensure a compatible LED dimmer is used. Check all wiring connections. Reduce the number of fixtures on the circuit or consult an electrician.
Fixture is not dimming	Non-dimmable switch used. Incompatible dimmer.	Replace with a compatible dimmable switch. Refer to the list of compatible dimmers in Section 4.1.
One fixture in a linked series is off	Loose linking cable/connector. Faulty fixture.	Check the connection between the fixtures. If other fixtures in the series work, the individual fixture may be faulty and require replacement.

7. Specifications

Feature	Specification
Model	ALC2-32-WH
Input Voltage	120 Volts AC, 60Hz
Wattage	11 watts
Light Output	781 Lumens
Efficiency	71 lumens per watt
Color Temperature (CCT)	3000 Kelvin (Warm White)
Color Rendering Index (CRI)	90+
Dimmable	Yes (5-100% with compatible dimmers)
Rated Life	35,000 hours
Material	Powder Coated Aluminum Housing, Acrylic Lens
Dimensions (L x W x H)	32.75 x 4 x 0.94 inches
Item Weight	1.99 pounds
Mounting Type	Under Cabinet, Surface Mount
Certifications	cETLus Listed (dry locations), Energy Star certified

8. Warranty and Support

8.1 Limited Product Warranty

This product is warranted to be free from defects in material and workmanship for a period of five years from the date of purchase. Products that prove to be defective during this period will be either repaired (i.e., replacement of defective electronic components) or replaced (i.e., new fixture, lamp, socket, excluding the lamp) or replaced, at the discretion of American Lighting, Inc. Claims for defective products must be made to the retail location from which the product was purchased with warranty. Upon submission of proper return claim documentation and product to American Lighting, Inc. by the retailer, American Lighting, Inc. reserves the right to inspect the product for misuse or abuse. Claims for consequential damages or damages that are not directly American Lighting, Inc. will be denied. This is a warranty of product reliability only and not a warranty of merchantability or fitness for a particular purpose. American Lighting, Inc. disclaims all liability whatsoever for any special, incidental or consequential damages, including without limitations, installations costs and damages for personal injury and property. These products may represent a possible shock or fire hazard if improperly installed or attached in any way. This warranty applies only to products that have been installed in accordance with instruction sheet and current local codes and/or the National Electrical Code. Warranty does not apply to any product that has been improperly installed or in situations where components have been altered in any way.

8.2 Customer Support

For questions, comments, technical assistance or additional repair parts, please contact American Lighting customer service. Refer to the official American Lighting website for contact information or visit their [Amazon Brand Store](#).