

Monroe 172352

Monroe Quick-Strut 172352 Suspension Strut and Coil Spring Assembly User Manual

Brand: Monroe | Model: 172352

1. INTRODUCTION

This manual provides essential information for the installation, operation, and maintenance of your Monroe Quick-Strut 172352 Suspension Strut and Coil Spring Assembly. This unit is designed to restore original equipment (OE) ride height and handling performance for compatible vehicles. It is a complete, pre-assembled unit, simplifying the replacement process.

1.1. Compatibility

This Monroe Quick-Strut assembly is compatible with the following vehicles:

- 2007-2011 Nissan Versa
- 2012-2012 Nissan Versa

Always verify compatibility by entering your vehicle's year, make, model, engine, and trim information before purchase and installation.

2. SAFETY INFORMATION

Automotive suspension work can be hazardous. Professional installation is highly recommended. If you choose to perform the installation yourself, ensure you have the necessary tools, experience, and safety equipment.

- Always wear appropriate personal protective equipment, including safety glasses and gloves.
- Ensure the vehicle is securely supported on jack stands on a level surface before beginning any work. Never rely solely on a jack.
- Refer to your vehicle's service manual for specific torque specifications and procedures.
- Do not attempt to disassemble the Quick-Strut assembly. The coil spring is under high compression and can cause serious injury if improperly handled.
- Keep hands and clothing clear of moving parts.

3. PACKAGE CONTENTS

Each Monroe Quick-Strut 172352 assembly typically includes:

- One (1) Pre-assembled Strut and Coil Spring Assembly
- Mounting Hardware (if applicable)
- Parts Pack(s) (if applicable)

Please inspect all components upon receipt to ensure no damage occurred during shipping and that all parts are present. Additional tools and equipment, such as a floor jack, jack stands, lug wrench, various sockets, wrenches, and a torque wrench, are required for installation and are not included.

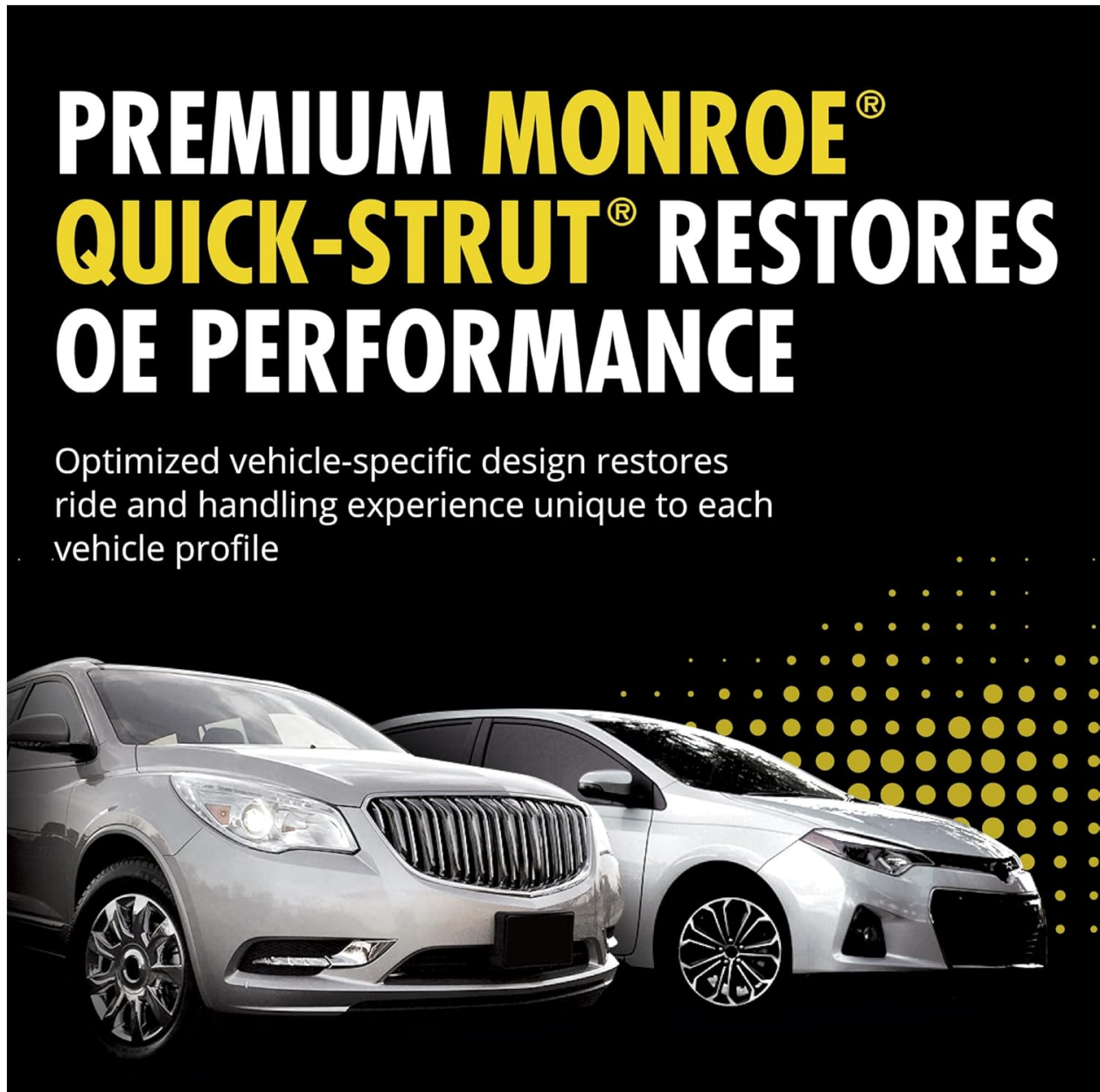


Image: Monroe Quick-Strut 172352 Suspension Strut and Coil Spring Assembly, shown with included mounting bolts.

4. INSTALLATION GUIDE

The Monroe Quick-Strut assembly is designed for a quicker, safer, and easier repair as it includes everything needed for strut replacement in a single, fully assembled unit, eliminating the need for a spring compressor. However, proper installation is crucial for vehicle safety and performance.

It is strongly recommended that installation be performed by a qualified automotive technician.

4.1. General Installation Steps (Consult Vehicle Service Manual for Details)

1. **Prepare the Vehicle:** Park the vehicle on a level surface, engage the parking brake, and loosen the lug nuts on the wheel corresponding to the strut being replaced. Raise the vehicle using a floor jack and secure it with jack stands. Remove the wheel.
2. **Remove Old Strut:** Disconnect any brake lines, ABS sensor wires, or sway bar links attached to the strut assembly. Remove the lower mounting bolts connecting the strut to the steering knuckle. Support the steering knuckle to prevent damage. Access the upper strut mount nuts, typically located under the hood or inside the trunk, and remove them. Carefully lower and remove the old strut assembly from the vehicle.
3. **Install New Strut:** Position the new Monroe Quick-Strut assembly into the vehicle. Align the upper mounting studs with the holes in the strut tower and loosely install the upper nuts. Align the lower mounting holes with the steering knuckle and install the lower bolts.
4. **Secure and Torque:** Tighten all upper and lower mounting hardware to the vehicle manufacturer's specified torque values. Reconnect any brake lines, ABS sensor wires, and sway bar links, ensuring they are routed correctly and not pinched.
5. **Final Steps:** Reinstall the wheel and lower the vehicle. Repeat the process for the other side if replacing both struts.





Image: The Monroe Quick-Strut 172352 assembly, ready for installation.



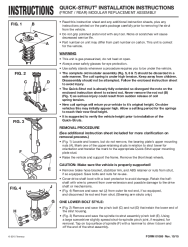


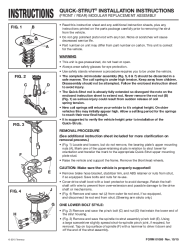


Image: A technician carefully positioning a strut assembly during installation.

5. OPERATING AND PERFORMANCE

After proper installation, the Monroe Quick-Strut 172352 assembly is designed to restore your vehicle's original ride and handling characteristics. You should experience:

- **Restored Ride Height:** Each application-specific coil spring is engineered to restore the vehicle's original ride height and support its weight.
- **Improved Steering Precision:** The premium upper strut mount helps ensure smooth,

Related Documents - 172352

	<p>Monroe Quick-Strut Installation Instructions</p> <p>Comprehensive installation guide for Monroe Quick-Strut modular replacement assemblies, covering removal and installation procedures for various vehicle strut configurations.</p>
	<p>Monroe Shock Absorber and Strut Catalogue 2024-2025</p> <p>Comprehensive 2024-2025 Monroe catalogue featuring shock absorbers, struts, and mounting/protection kits for a wide range of passenger and commercial vehicles. Find part numbers and application details.</p>
	<p>Monroe 2019 Master Catalogue - Shock Absorbers & Suspension Parts</p> <p>Explore the comprehensive Monroe 2019 Master Catalogue featuring a wide range of shock absorbers and suspension components for numerous vehicle makes and models. Find part numbers and technical information.</p>
	<p>Monroe Quick-Strut Installation Instructions</p> <p>Comprehensive installation guide for Monroe Quick-Strut modular replacement assemblies, covering removal and installation procedures for various vehicle strut configurations.</p>
	<p>Volvo 7xx/9xx Front Suspension Maintenance Guide: Alignment, Bushings, Struts, and More</p> <p>Comprehensive guide to Volvo 7xx, 9xx, 740, 744T, 745T, 940, and 960 front suspension maintenance, covering wheel alignment, bushing replacement, strut installation, tie rod and ball joint service, troubleshooting, and more.</p>
	<p>Monroe Shock Absorber and Strut Catalogue 2024-2025</p> <p>Comprehensive 2024-2025 Monroe catalogue featuring shock absorbers, struts, and mounting/protection kits for a wide range of passenger and commercial vehicles. Find part numbers and application details.</p>

MONROE SHOCKS & STRUTS			
New Number Announcement			
Part Name	Part Description	Part Number	Assembly Date
72923	SHOCK STRUT ASSEMBLY	72923	2016/04/01
72924	SHOCK STRUT ASSEMBLY	72924	2016/04/01
72925	SHOCK STRUT ASSEMBLY	72925	2016/04/01
72926	SHOCK STRUT ASSEMBLY	72926	2016/04/01
72927	SHOCK STRUT ASSEMBLY	72927	2016/04/01
72928	SHOCK STRUT ASSEMBLY	72928	2016/04/01
72929	SHOCK STRUT ASSEMBLY	72929	2016/04/01
72930	SHOCK STRUT ASSEMBLY	72930	2016/04/01
72931	SHOCK STRUT ASSEMBLY	72931	2016/04/01
72932	SHOCK STRUT ASSEMBLY	72932	2016/04/01
72933	SHOCK STRUT ASSEMBLY	72933	2016/04/01
72934	SHOCK STRUT ASSEMBLY	72934	2016/04/01
72935	SHOCK STRUT ASSEMBLY	72935	2016/04/01
72936	SHOCK STRUT ASSEMBLY	72936	2016/04/01
72937	SHOCK STRUT ASSEMBLY	72937	2016/04/01
72938	SHOCK STRUT ASSEMBLY	72938	2016/04/01
72939	SHOCK STRUT ASSEMBLY	72939	2016/04/01
72940	SHOCK STRUT ASSEMBLY	72940	2016/04/01
72941	SHOCK STRUT ASSEMBLY	72941	2016/04/01
72942	SHOCK STRUT ASSEMBLY	72942	2016/04/01
72943	SHOCK STRUT ASSEMBLY	72943	2016/04/01
72944	SHOCK STRUT ASSEMBLY	72944	2016/04/01
72945	SHOCK STRUT ASSEMBLY	72945	2016/04/01
72946	SHOCK STRUT ASSEMBLY	72946	2016/04/01
72947	SHOCK STRUT ASSEMBLY	72947	2016/04/01
72948	SHOCK STRUT ASSEMBLY	72948	2016/04/01
72949	SHOCK STRUT ASSEMBLY	72949	2016/04/01
72950	SHOCK STRUT ASSEMBLY	72950	2016/04/01
72951	SHOCK STRUT ASSEMBLY	72951	2016/04/01
72952	SHOCK STRUT ASSEMBLY	72952	2016/04/01
72953	SHOCK STRUT ASSEMBLY	72953	2016/04/01
72954	SHOCK STRUT ASSEMBLY	72954	2016/04/01
72955	SHOCK STRUT ASSEMBLY	72955	2016/04/01
72956	SHOCK STRUT ASSEMBLY	72956	2016/04/01
72957	SHOCK STRUT ASSEMBLY	72957	2016/04/01
72958	SHOCK STRUT ASSEMBLY	72958	2016/04/01
72959	SHOCK STRUT ASSEMBLY	72959	2016/04/01
72960	SHOCK STRUT ASSEMBLY	72960	2016/04/01
72961	SHOCK STRUT ASSEMBLY	72961	2016/04/01
72962	SHOCK STRUT ASSEMBLY	72962	2016/04/01
72963	SHOCK STRUT ASSEMBLY	72963	2016/04/01
72964	SHOCK STRUT ASSEMBLY	72964	2016/04/01
72965	SHOCK STRUT ASSEMBLY	72965	2016/04/01
72966	SHOCK STRUT ASSEMBLY	72966	2016/04/01
72967	SHOCK STRUT ASSEMBLY	72967	2016/04/01
72968	SHOCK STRUT ASSEMBLY	72968	2016/04/01
72969	SHOCK STRUT ASSEMBLY	72969	2016/04/01
72970	SHOCK STRUT ASSEMBLY	72970	2016/04/01
72971	SHOCK STRUT ASSEMBLY	72971	2016/04/01
72972	SHOCK STRUT ASSEMBLY	72972	2016/04/01
72973	SHOCK STRUT ASSEMBLY	72973	2016/04/01
72974	SHOCK STRUT ASSEMBLY	72974	2016/04/01
72975	SHOCK STRUT ASSEMBLY	72975	2016/04/01
72976	SHOCK STRUT ASSEMBLY	72976	2016/04/01
72977	SHOCK STRUT ASSEMBLY	72977	2016/04/01
72978	SHOCK STRUT ASSEMBLY	72978	2016/04/01
72979	SHOCK STRUT ASSEMBLY	72979	2016/04/01
72980	SHOCK STRUT ASSEMBLY	72980	2016/04/01
72981	SHOCK STRUT ASSEMBLY	72981	2016/04/01
72982	SHOCK STRUT ASSEMBLY	72982	2016/04/01
72983	SHOCK STRUT ASSEMBLY	72983	2016/04/01
72984	SHOCK STRUT ASSEMBLY	72984	2016/04/01
72985	SHOCK STRUT ASSEMBLY	72985	2016/04/01
72986	SHOCK STRUT ASSEMBLY	72986	2016/04/01
72987	SHOCK STRUT ASSEMBLY	72987	2016/04/01
72988	SHOCK STRUT ASSEMBLY	72988	2016/04/01
72989	SHOCK STRUT ASSEMBLY	72989	2016/04/01
72990	SHOCK STRUT ASSEMBLY	72990	2016/04/01
72991	SHOCK STRUT ASSEMBLY	72991	2016/04/01
72992	SHOCK STRUT ASSEMBLY	72992	2016/04/01
72993	SHOCK STRUT ASSEMBLY	72993	2016/04/01
72994	SHOCK STRUT ASSEMBLY	72994	2016/04/01
72995	SHOCK STRUT ASSEMBLY	72995	2016/04/01
72996	SHOCK STRUT ASSEMBLY	72996	2016/04/01
72997	SHOCK STRUT ASSEMBLY	72997	2016/04/01
72998	SHOCK STRUT ASSEMBLY	72998	2016/04/01
72999	SHOCK STRUT ASSEMBLY	72999	2016/04/01
73000	SHOCK STRUT ASSEMBLY	73000	2016/04/01

[pdf]

2016 NNA.xlsx SAA3024 monroe Q2 new vehicle coverage

Effective: April - June 2016 Part Number 72923 72924 72944

171581 171582 172221 172222 172223 172236 17223 ... 016 5/1/2016

6/1/2016 6/1/2016 6/1/2016 6/1/2016 172275 172276 172286

172287 172297 172298 172351 **172352** 172597 172598 271435

271436 272275 272276 802263 802264 802295 802296 909913

182281 QUICK-ST...

lang:de score:20 filesize: 61.19 K page_count: 3 document date:

2016-06-27

MOUNTING & LENGTH SPECIFICATIONS									
Part No.	Part Type	Mounting Type	Length	Width	Height	Weight	Part No.	Part Type	Mounting Type
1000	Shock	1	11.1"	1.1"	1.1"	1.1"	1000	Shock	1
1001	Shock	1	11.1"	1.1"	1.1"	1.1"	1001	Shock	1
1002	Shock	1	11.1"	1.1"	1.1"	1.1"	1002	Shock	1
1003	Shock	1	11.1"	1.1"	1.1"	1.1"	1003	Shock	1
1004	Shock	1	11.1"	1.1"	1.1"	1.1"	1004	Shock	1
1005	Shock	1	11.1"	1.1"	1.1"	1.1"	1005	Shock	1
1006	Shock	1	11.1"	1.1"	1.1"	1.1"	1006	Shock	1
1007	Shock	1	11.1"	1.1"	1.1"	1.1"	1007	Shock	1
1008	Shock	1	11.1"	1.1"	1.1"	1.1"	1008	Shock	1
1009	Shock	1	11.1"	1.1"	1.1"	1.1"	1009	Shock	1
1010	Shock	1	11.1"	1.1"	1.1"	1.1"	1010	Shock	1
1011	Shock	1	11.1"	1.1"	1.1"	1.1"	1011	Shock	1
1012	Shock	1	11.1"	1.1"	1.1"	1.1"	1012	Shock	1
1013	Shock	1	11.1"	1.1"	1.1"	1.1"	1013	Shock	1
1014	Shock	1	11.1"	1.1"	1.1"	1.1"	1014	Shock	1
1015	Shock	1	11.1"	1.1"	1.1"	1.1"	1015	Shock	1
1016	Shock	1	11.1"	1.1"	1.1"	1.1"	1016	Shock	1
1017	Shock	1	11.1"	1.1"	1.1"	1.1"	1017	Shock	1
1018	Shock	1	11.1"	1.1"	1.1"	1.1"	1018	Shock	1
1019	Shock	1	11.1"	1.1"	1.1"	1.1"	1019	Shock	1
1020	Shock	1	11.1"	1.1"	1.1"	1.1"	1020	Shock	1
1021	Shock	1	11.1"	1.1"	1.1"	1.1"	1021	Shock	1
1022	Shock	1	11.1"	1.1"	1.1"	1.1"	1022	Shock	1
1023	Shock	1	11.1"	1.1"	1.1"	1.1"	1023	Shock	1
1024	Shock	1	11.1"	1.1"	1.1"	1.1"	1024	Shock	1
1025	Shock	1	11.1"	1.1"	1.1"	1.1"	1025	Shock	1
1026	Shock	1	11.1"	1.1"	1.1"	1.1"	1026	Shock	1
1027	Shock	1	11.1"	1.1"	1.1"	1.1"	1027	Shock	1
1028	Shock	1	11.1"	1.1"	1.1"	1.1"	1028	Shock	1
1029	Shock	1	11.1"	1.1"	1.1"	1.1"	1029	Shock	1
1030	Shock	1	11.1"	1.1"	1.1"	1.1"	1030	Shock	1
1031	Shock	1	11.1"	1.1"	1.1"	1.1"	1031	Shock	1
1032	Shock	1	11.1"	1.1"	1.1"	1.1"	1032	Shock	1
1033	Shock	1	11.1"	1.1"	1.1"	1.1"	1033	Shock	1
1034	Shock	1	11.1"	1.1"	1.1"	1.1"	1034	Shock	1
1035	Shock	1	11.1"	1.1"	1.1"	1.1"	1035	Shock	1
1036	Shock	1	11.1"	1.1"	1.1"	1.1"	1036	Shock	1
1037	Shock	1	11.1"	1.1"	1.1"	1.1"	1037	Shock	1
1038	Shock	1	11.1"	1.1"	1.1"	1.1"	1038	Shock	1
1039	Shock	1	11.1"	1.1"	1.1"	1.1"	1039	Shock	1
1040	Shock	1	11.1"	1.1"	1.1"	1.1"	1040	Shock	1
1041	Shock	1	11.1"	1.1"	1.1"	1.1"	1041	Shock	1
1042	Shock	1	11.1"	1.1"	1.1"	1.1"	1042	Shock	1
1043	Shock	1	11.1"	1.1"	1.1"	1.1"	1043	Shock	1
1044	Shock	1	11.1"	1.1"	1.1"	1.1"	1044	Shock	1
1045	Shock	1	11.1"	1.1"	1.1"	1.1"	1045	Shock	1
1046	Shock	1	11.1"	1.1"	1.1"	1.1"	1046	Shock	1
1047	Shock	1	11.1"	1.1"	1.1"	1.1"	1047	Shock	1
1048	Shock	1	11.1"	1.1"	1.1"	1.1"	1048	Shock	1
1049	Shock	1	11.1"	1.1"	1.1"	1.1"	1049	Shock	1
1050	Shock	1	11.1"	1.1"	1.1"	1.1"	1050	Shock	1
1051	Shock	1	11.1"	1.1"	1.1"	1.1"	1051	Shock	1
1052	Shock	1	11.1"	1.1"	1.1"	1.1"	1052	Shock	1
1053	Shock	1	11.1"	1.1"	1.1"	1.1"	1053	Shock	1
1054	Shock	1	11.1"	1.1"	1.1"	1.1"	1054	Shock	1
1055	Shock	1	11.1"	1.1"	1.1"	1.1"	1055	Shock	1
1056	Shock	1	11.1"	1.1"	1.1"	1.1"	1056	Shock	1
1057	Shock	1	11.1"	1.1"	1.1"	1.1"	1057	Shock	1
1058	Shock	1	11.1"	1.1"	1.1"	1.1"	1058	Shock	1
1059	Shock	1	11.1"	1.1"	1.1"	1.1"	1059	Shock	1
1060	Shock	1	11.1"	1.1"	1.1"	1.1"	1060	Shock	1
1061	Shock	1	11.1"	1.1"	1.1"	1.1"	1061	Shock	1
1062	Shock	1	11.1"	1.1"	1.1"	1.1"	1062	Shock	1
1063	Shock	1	11.1"	1.1"	1.1"	1.1"	1063	Shock	1
1064	Shock	1	11.1"	1.1"	1.1"	1.1"	1064	Shock	1
1065	Shock	1	11.1"	1.1"	1.1"	1.1"	1065	Shock	1
1066	Shock	1	11.1"	1.1"	1.1"	1.1"	1066	Shock	1
1067	Shock	1	11.1"	1.1"	1.1"	1.1"	1067	Shock	1
1068	Shock	1	11.1"	1.1"	1.1"	1.1"	1068	Shock	1
1069	Shock	1	11.1"	1.1"	1.1"	1.1"	1069	Shock	1
1070	Shock	1	11.1"	1.1"	1.1"	1.1"	1070	Shock	1
1071	Shock	1	11.1"	1.1"	1.1"	1.1"	1071	Shock	1
1072	Shock	1	11.1"	1.1"	1.1"	1.1"	1072	Shock	1
1073	Shock	1	11.1"	1.1"	1.1"	1.1"	1073	Shock	1
1074	Shock	1	11.1"	1.1"	1.1"	1.1"	1074	Shock	1
1075	Shock	1	11.1"	1.1"	1.1"	1.1"	1075	Shock	1
1076	Shock	1	11.1"	1.1"	1.1"	1.1"	1076	Shock	1
1077	Shock	1	11.1"	1.1"	1.1"	1.1"	1077	Shock	1
1078	Shock	1	11.1"	1.1"	1.1"	1.1"	1078	Shock	1
1079	Shock	1	11.1"	1.1"	1.1"	1.1"	1079	Shock	1
1080	Shock	1	11.1"	1.1"	1.1"	1.1"	1080	Shock	1
1081	Shock	1	11.1"	1.1"	1.1"	1.1"	1081	Shock	1
1082	Shock	1	11.1"	1.1"	1.1"	1.1"	1082	Shock	1
1083	Shock	1	11.1"	1.1"	1.1"	1.1"	1083	Shock	1
1084	Shock	1	11.1"	1.1"	1.1"	1.1"	1084	Shock	1
1085	Shock	1	11.1"	1.1"	1.1"	1.1"	1085	Shock	1
1086	Shock	1	11.1"	1.1"	1.1"	1.1"	1086	Shock	1
1087	Shock	1	11.1"	1.1"	1.1"	1.1"	1087	Shock	1
1088	Shock	1	11.1"	1.1"	1.1"	1.1"	1088	Shock	1