

Manuals+

[Q & A](#) | [Deep Search](#) | [Upload](#)

Manuals.plus /

› [HARBOR BREEZE](#) /

› Harbor Breeze Caratuk River 52-inch Ceiling Fan Instruction Manual

HARBOR BREEZE 798c390e-d327-4bb5-84dc-77a4d64b65dd

Harbor Breeze Caratuk River 52-inch Ceiling Fan

INSTRUCTION MANUAL

Product Overview

The Harbor Breeze Caratuk River 52-inch Bronze Downrod or Flush Mount Indoor Ceiling Fan with Light Kit is designed to provide efficient air circulation and illumination for various indoor spaces such as living rooms, bedrooms, and home offices. This fan features a durable bronze finish, five reversible blades, and a convenient pull chain control system for both the fan and light functions. It also includes a reversible motor for optimal performance in both summer and winter seasons.



Figure 1: Overview of the Harbor Breeze Caratuk River 52-inch Ceiling Fan.

Setup and Installation

Before beginning installation, ensure the power supply to the installation area is turned off at the circuit breaker to prevent electrical shock. This ceiling fan can be installed using either a downrod for vaulted ceilings or a flush mount for standard ceilings. For safety and ease of installation, it is highly recommended to have a second person assist during the mounting process, especially when connecting wiring and securing the fan to the ceiling bracket.

- **Safety First:** Always disconnect power before installation or maintenance.
- **Mounting Options:** Choose between downrod (for vaulted ceilings) or flush mount installation based on your ceiling type and desired fan height.

- **Wiring:** Connect the fan's wires (typically white and red/black) to the corresponding household wires. Ensure all connections are secure and insulated.
- **Blade Attachment:** Securely attach the five fan blades to the motor housing.
- **Light Kit Installation:** Install the light kit and globe according to the instructions, ensuring bulbs are correctly seated.



Figure 2: The ceiling fan installed in a living room, demonstrating its aesthetic integration.

Note: While an instructional video was reviewed, it was created by an influencer and not the seller. For detailed installation steps, please refer to the comprehensive guide included in your product packaging.

Operating Instructions

The Caratuk River ceiling fan is operated using two pull chains and features a reversible motor for year-round comfort.

- **Fan Speed Control:** One pull chain controls the fan speed. Pull the chain repeatedly to cycle through the available speed settings (e.g., High, Medium, Low, Off).
- **Light Control:** The second pull chain operates the integrated light kit. Pull the chain to turn the light On or Off.
- **Seasonal Reversal Switch:** Locate the small switch on the motor housing, typically above the light kit. This switch allows you to change the direction of the fan blades.
 - **Summer Mode (Counter-clockwise):** Push the switch to the position that makes the blades spin counter-clockwise. This creates a downward airflow, producing a cooling breeze. This is ideal for circulating cool air from air conditioning units.
 - **Winter Mode (Clockwise):** Push the switch to the position that makes the blades spin clockwise. This creates an upward airflow, circulating warm air trapped near the ceiling downwards without creating a direct draft. This helps distribute heat more evenly in the room.

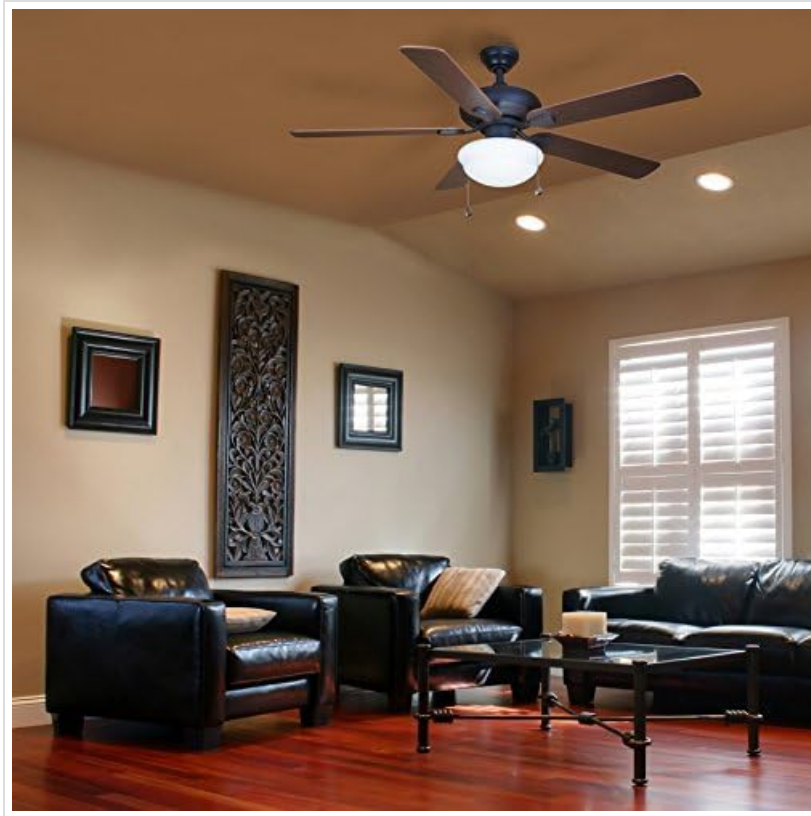


Figure 3: The ceiling fan providing illumination and air circulation in a living space.

Maintenance

Regular maintenance ensures optimal performance and longevity of your ceiling fan.

- **Cleaning:** Dust the fan blades and motor housing periodically with a soft, damp cloth. Avoid using abrasive cleaners that could damage the finish.
- **Blade Tightness:** Check all blade screws periodically to ensure they are tight. Loose blades can cause wobbling and noise.
- **Light Bulb Replacement:** When replacing bulbs, ensure the power is off. Use bulbs of the correct wattage and type as specified in the product manual.
- **Balancing:** If the fan wobbles, ensure all blades are securely attached and that the blade arms are not bent. A balancing kit (often included) can be used to correct minor wobbles by adding small weights to the blades.



Figure 4: Close-up view of a fan blade, highlighting the bronze finish.

Troubleshooting

Problem	Possible Cause	Solution
Fan does not start	No power to the fan; Loose wire connections; Incorrect wiring.	Check circuit breaker and wall switch. Ensure all wire connections are secure. Verify wiring matches the diagram in the full manual.
Light does not work	Loose bulb; Faulty bulb; Incorrect wiring to light kit.	Tighten bulb. Replace bulb. Check light kit wiring connections.
Fan wobbles excessively	Loose blade screws; Unbalanced blades; Loose mounting bracket.	Tighten all blade screws. Use a balancing kit to correct blade imbalance. Ensure mounting bracket is securely fastened to the ceiling.
Noisy operation	Loose screws; Motor hum; Blades hitting an obstruction.	Check and tighten all screws. Ensure fan is properly lubricated if applicable (refer to full manual). Verify nothing is obstructing the blades.

Specifications

Brand: HARBOR BREEZE

Model: Caratuk River (Model Number: 798c390e-d327-4bb5-84dc-77a4d64b65dd)

Color: Bronze

Electric Fan Design: Ceiling Fan

Power Source: Corded Electric

Room Type: Living Room, Bedroom, Home Office

Special Feature: Remote Control

Wattage: 60 watts

Finish Type: Bronze

Voltage: 120 Volts (AC)

Switch Type: Pull Chain

Included Components: Light Kit

Indoor/Outdoor Usage: Indoor

Specification Met: Energy Star, UL Listed, ETL

Control Method: Remote, Pull Chain

Blade Material: Bronze

Efficiency: Energy Efficient

Number of Power Levels: 3

Item Weight: 19.56 pounds

Package Dimensions: 24 x 12.5 x 10 inches

Warranty and Support

For specific warranty details and terms, please refer to the warranty card included with your product or contact Harbor Breeze customer service directly. Information regarding product support, replacement parts, or technical assistance can typically be found on the manufacturer's official website or by contacting the retailer where the product was purchased.

Note: Protection plans are available for purchase separately from various providers. These plans are not directly offered by the manufacturer and their terms may vary.

© 2024 HARBOR BREEZE. All rights reserved.

Model: Caratuk River (798c390e-d327-4bb5-84dc-77a4d64b65dd)