

[Manuals.plus](#) /

> [LUISSLADDERS](#) /

> LUISSLADDERS 12.5ft Telescoping Ladder Instruction Manual

LUISSLADDERS LUISSLADDERS

LUISSLADDERS 12.5ft Telescoping Ladder Instruction Manual

Model: LUISSLADDERS (12.5ft Yellow)

Brand: LUISSLADDERS

This manual provides comprehensive instructions for the safe and effective use of your LUISSLADDERS 12.5ft Telescoping Ladder. Learn about its features, setup, operation, and maintenance.

1. SAFETY INFORMATION

Your safety is paramount when using any ladder. Please read and understand all safety warnings and instructions before operating this telescoping ladder.

- **Ensure All Rungs are Locked:** Before climbing, verify that all extended rungs are securely locked in place. Failure to do so can lead to instability and serious injury.
- **Maintain Balance:** Do not stand on the top three steps of the ladder, as this can cause you to lose your balance.
- **Proper Angle:** Position the ladder at a suggested angle of 65° to 75° against a stable surface.
- **Load Capacity:** Do not exceed the maximum load capacity of 330 pounds.
- **Stable Surface:** Always place the ladder on a firm, level, and non-slip surface. The anti-slip foot covers are designed to enhance stability.
- **Controlled Retraction:** Utilize the inward slide latches for controlled, rung-by-rung retraction to prevent finger pinching and sudden collapse.
- **Inspect Before Use:** Always inspect the ladder for any damage or loose parts before each use. Do not use a damaged ladder.



Easy to Use

Keep Your Fingers Safe



Unlock the right button



Unlock the left button

Image: Ladder dimensions, suggested angle (65°-75°), and load capacity (330 lbs) with a critical safety warning against standing on the top three steps.

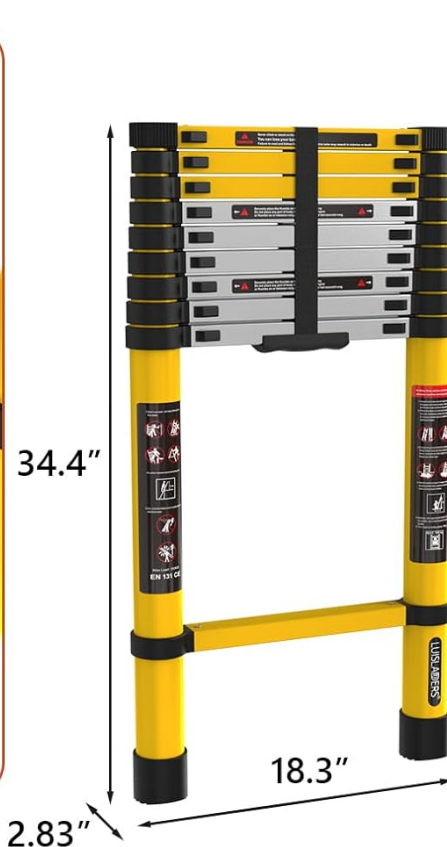


Suggested Angle:
65°-75°



Load-bearing Capacity:
330lbs

**NO STANDING ON TOP 3 STEPS YOU
WILL LOSE YOUR BALANCE**



149.6"



18.3"

Image: Visual comparison emphasizing the LUISLADDERS ladder's safety features including fixed design, sturdy structure, and anti-slip foot covers.

2. PRODUCT OVERVIEW

The LUISLADDERS 12.5ft Telescoping Ladder is a versatile and compact tool designed for various tasks, offering both extended reach and convenient storage. Constructed from durable aluminum, it combines strength with portability.

Key Features:

- **Enhanced Stability:** Features upgraded plastic materials for strong and reliable support, extending service life.
- **Adjustable & Safe:** Inward slide latches allow for rung-by-rung height adjustment in 1.3ft increments, ensuring controlled extension and retraction.
- **Portable & Space-Saving:** Lightweight and compact design with a heavy-duty securing strap for easy transport and storage.
- **Multi-functional:** Suitable for a wide range of indoor and outdoor tasks, including wall painting, changing light bulbs, home repairs, climbing roofs, attic access, tree pruning, window cleaning, and RV use.



Image: The LUISLADDERS 12.5ft Telescoping Ladder in its compact, folded state, ready for storage or transport.



Image: The LUISLADDERS telescoping ladder demonstrating its versatility in different scenarios, including RV access, construction, and home maintenance.

3. SETUP

The LUISLADDERS telescoping ladder comes largely pre-assembled. The main setup involves ensuring the stability features are correctly in place.

Initial Inspection:

- Remove the ladder from its packaging.
- Inspect all components for any signs of damage during shipping.
- Ensure the heavy-duty securing strap is present and functional.

Stability Features:

- Verify that the non-slip foot covers are securely attached to the bottom of the ladder legs. These provide high adhesion and friction for stability.
- Check the upgraded plastic supports between the rungs. These new materials are designed for enhanced durability and safety.

Temperature Resistance

More Durable & Safer

Ours	Other
  New material provide strong & reliable support.	  Easily broken. Very dangerous!
  High Adhesion & High Friction Friendly to Environment	  Could not provide enough friction, easily to fall down.

Image: Detailed view of the ladder's improved temperature-resistant supports and high-adhesion, non-slip foot covers, crucial for stability.

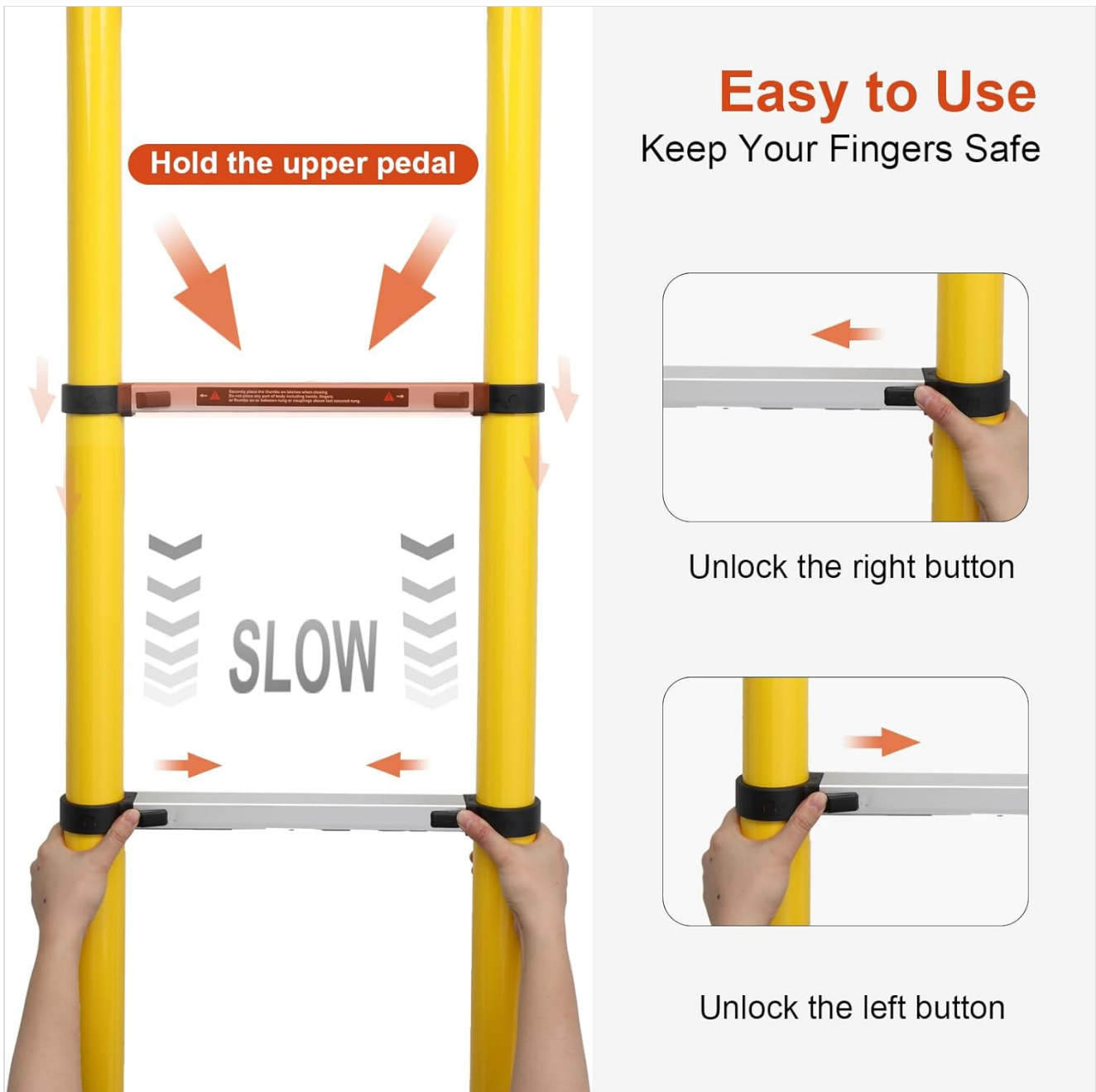


Image: Visual guide to the ladder's dimensions and safe usage parameters, including the recommended angle and maximum load.

4. OPERATING INSTRUCTIONS

Follow these steps for safe and efficient operation of your LUISLADDERS telescoping ladder.

Extending the Ladder:

1. Place the ladder on a stable, level surface.
2. Release the securing strap.
3. Starting from the bottom, pull up each rung one by one until it clicks into place. Ensure the locking mechanisms on both sides of each rung are fully engaged and visible (often indicated by a green marker).
4. Extend only the necessary number of rungs for your task.
5. Once extended, gently shake the ladder to confirm all sections are securely locked before climbing.

Retracting the Ladder:

1. Ensure no one is on the ladder and it is clear of any obstructions.

2. Locate the inward slide latches (buttons) on each side of the bottom-most extended rung.
3. Press both latches simultaneously. The rung will slowly retract.
4. Continue this process for each rung, working your way up the ladder. The controlled retraction mechanism is designed to prevent rapid collapse and finger pinching.
5. Once fully retracted, secure the ladder with the heavy-duty strap for storage.

Stable and Durable

More Durable & Safer



No rust



No Bending



No Shaking

Premium Aluminum



Non-slip Foot Cover

Image: Instructions for safe and easy retraction, emphasizing pressing both unlock buttons simultaneously for a slow, controlled descent.

5. MAINTENANCE

Regular maintenance ensures the longevity and safe operation of your telescoping ladder.

- **Cleaning:** Clean the ladder regularly with a damp cloth to remove dirt, dust, and debris. Avoid harsh chemicals that could damage the aluminum or plastic components.
- **Lubrication:** Periodically apply a silicone-based lubricant to the telescoping mechanisms to ensure smooth extension and retraction.
- **Storage:** Store the ladder in a dry, cool place, away from direct sunlight and extreme temperatures. Ensure it is fully retracted and secured with the strap.
- **Inspection:** Before each use, inspect the rungs, locking mechanisms, foot covers, and strap for wear, damage, or deformation. Replace any damaged parts immediately.



Image: Examples of how the compact LUISLADDERS telescoping ladder can be easily stored in various small spaces, such as a car trunk or a closet.

6. TROUBLESHOOTING

If you encounter any issues with your LUISLADDERS telescoping ladder, refer to the following common troubleshooting tips:

- **Rungs Not Locking:** Ensure each rung is fully extended until you hear a distinct click. Check for any debris or obstruction in the locking mechanism.
- **Difficulty Retracting:** Make sure you are pressing both inward slide latches simultaneously and firmly. If a rung is stiff, apply a silicone lubricant to the telescoping sections.
- **Ladder Feels Unstable:** Verify that the ladder is placed on a flat, solid surface. Check that all extended rungs are locked and the ladder is positioned at the recommended 65°-75° angle. Inspect foot covers for wear.
- **Strap Issues:** If the securing strap is damaged or worn, it should be replaced to ensure safe storage and transport.

For persistent issues not covered here, please contact LUISLADDERS customer support.

7. SPECIFICATIONS

Material	Aluminum
Product Dimensions (Collapsed)	18.3"W x 34.4"H
Color	Yellow
Special Feature	Extendable
Item Weight	17.6 Pounds
Load Capacity	330 Pounds
Maximum Height	12.5 Feet

8. WARRANTY AND SUPPORT

The LUISLADDERS 12.5ft Telescoping Ladder comes with a one-year guarantee. For specific details regarding warranty coverage, returns, or customer service inquiries, please refer to the product packaging or contact LUISLADDERS directly.

LUISLADDERS is committed to 100% customer satisfaction.