



Manuals.plus /

› TMEZON /

› TMEZON Wired Video Door Phone Intercom System MZ-VDP-718EM/1-CP80/1-A1 User Manual

## TMEZON MZ-VDP-718EM/1-CP80/1-A1

# TMEZON Wired Video Door Phone Intercom System User Manual

Model: MZ-VDP-718EM/1-CP80/1-A1

## 1. INTRODUCTION

---

This manual provides detailed instructions for the installation, operation, and maintenance of your TMEZON Wired Video Door Phone Intercom System. This system features a 7-inch 1080P color LCD indoor monitor and an outdoor doorbell camera with night vision and motion detection capabilities. Please read this manual thoroughly before installation and use to ensure proper functionality and safety.

## 2. SAFETY INFORMATION

---

- Ensure all wiring is performed by a qualified electrician to prevent electrical hazards.
- Disconnect power before performing any installation or maintenance.
- Do not expose the indoor monitor to moisture or extreme temperatures.
- The outdoor camera is IP65 weatherproof, but avoid direct high-pressure water jets.
- Use only the power adapter supplied with the system.
- Keep the product away from strong magnetic fields.

## 3. PACKAGE CONTENTS

---

Verify that all items are present in your package:

- 7-inch Indoor Monitor
- Outdoor Doorbell Camera
- Power Adapter
- Mounting Bracket for Monitor
- Mounting Screws and Wall Plugs

- 4-pin Connector Wires (for extension, extension wire not included)
- User Manual (this document)

## 4. PRODUCT OVERVIEW

---

The TMEZON Video Door Phone Intercom System provides secure and convenient communication with visitors. It includes an indoor monitor with a 7-inch TFT display and an outdoor camera featuring 1080P resolution, a 115-degree wide-angle lens, night vision, and rainproof design.

### 4.1 Key Features

- **7-inch Color LCD Monitor:** Easy-to-operate system with touch buttons.
- **1080P Outdoor Camera:** High-definition video, 115-degree wide view angle, night vision, rainproof, and anti-vandal design.
- **Automatic Snapshot/Recording:** Captures images or video when the doorbell is pressed or motion is detected (requires Micro SD card, sold separately).
- **Two-Way Audio:** Communicate with visitors from the indoor monitor.
- **One-Key Unlock:** Remotely unlock electronic locks (compatible locks sold separately).
- **Multiple Intercom System:** Supports up to 4 monitors and 2 doorbell cameras for multi-room communication.
- **Multi-Device Interconnection:** Connects with additional 2x CCTV cameras, 2x PIR alarms, and 2x electronic locks for enhanced security.

# Advanced Video Door Phone



TFT Display



Snapshot/Record



TF Card



One-key Unlock



Multiple Intercom



120° wide angle



Motion detect



Night Vision



Figure 1: TMEZON Video Door Phone System highlighting key features.

# What is the size?



Figure 2: Dimensions of the indoor monitor and outdoor unit.

## 5. SETUP AND INSTALLATION

---

Proper installation is crucial for optimal performance. Follow these steps carefully.

### 5.1 Wiring Overview

The system uses 4-wire connectivity. The provided 4-pin connector wires are used to connect the outdoor camera to the indoor monitor, and multiple indoor monitors to each other. For longer distances, RVV4 (4 core wire), Cat5, or Cat6 cables can be used (not included). Maximum recommended distance is 100-200 meters.

Your browser does not support the video tag.

Video 1: Demonstrates how to use the 4-pin cable for connecting the video door phone system, including extending connections for longer distances between monitors and between the monitor and outdoor camera.

### 5.2 Outdoor Camera Installation

1. Choose a suitable location near your entrance, approximately 1.5 meters (5 feet) from the ground, avoiding direct sunlight or rain exposure (though the unit is weatherproof).
2. Mount the outdoor camera bracket securely to the wall using the provided screws.
3. Connect the 4-pin wire from the outdoor camera to the designated "DOOR1" port on the indoor monitor. Ensure correct polarity.
4. Attach the outdoor camera to its bracket.



Figure 3: Outdoor doorbell camera with IP65 weatherproof rating.

### 5.3 Indoor Monitor Installation

1. Select a convenient indoor location, such as a living room or kitchen, where you can easily view and operate the monitor.
2. Mount the indoor monitor bracket to the wall.
3. Connect the 4-pin wire from the outdoor camera to the "DOOR1" input on the indoor monitor.
4. If connecting multiple monitors, use the "OUT" port of the master monitor to the "IN" port of the slave monitor.

5. Connect the power adapter to the indoor monitor and plug it into a power outlet.
6. Carefully attach the indoor monitor to its wall bracket.



Figure 4: Multiple intercom conversation feature.

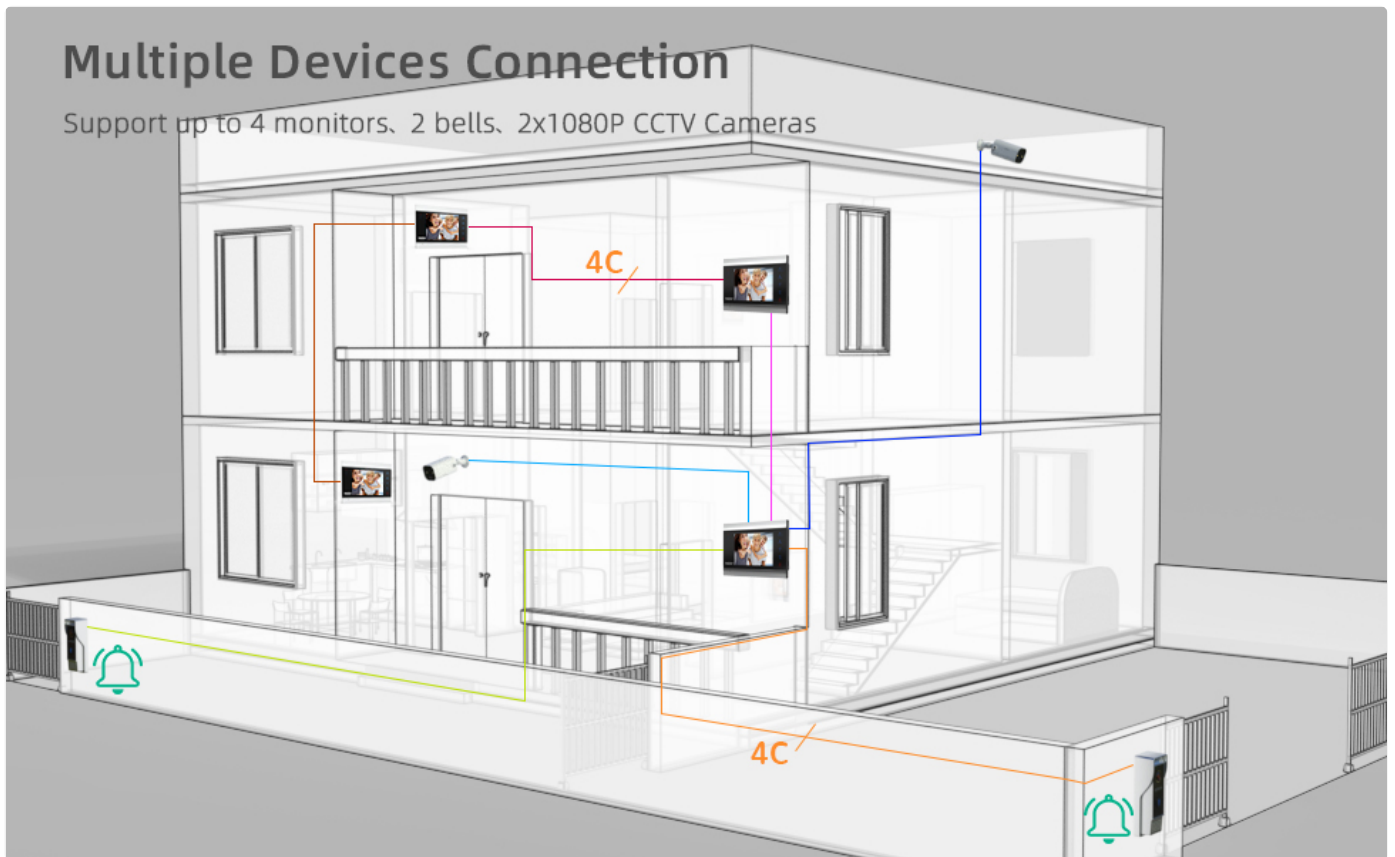


Figure 5: One-key monitoring function.

The system supports connecting up to 4 indoor monitors, 2 outdoor doorbell cameras, 2 additional CCTV cameras, 2 PIR alarms, and 2 electronic locks for comprehensive home security. Refer to the wiring diagram in Video 1 for detailed

connection instructions.

## 6. OPERATING INSTRUCTIONS

---

### 6.1 Basic Functions

- **Answering Calls:** When a visitor presses the doorbell, the indoor monitor will ring and display the visitor's image. Press the "Answer" button to initiate two-way communication.
- **Two-Way Audio:** Speak into the monitor to communicate with the visitor at the outdoor camera.
- **Unlocking:** If an electronic lock is connected, press the "Unlock" button on the monitor to remotely open the door.
- **Monitoring:** Press the "Monitor" button to view the live feed from the outdoor camera at any time, even if no one has pressed the doorbell.



Figure 6: Two-way audio and one-key unlock in action.

### 6.2 Snapshot and Recording

The system can automatically capture snapshots or record video when the doorbell is pressed or motion is detected. A Micro SD card (up to 64GB, not included) is required to save these files. The built-in memory can store approximately 80 pictures.

- **Viewing Records:** Access saved snapshots and video recordings through the monitor's menu.
- **SD Card Installation:** Insert a Micro SD card into the designated slot on the indoor monitor.

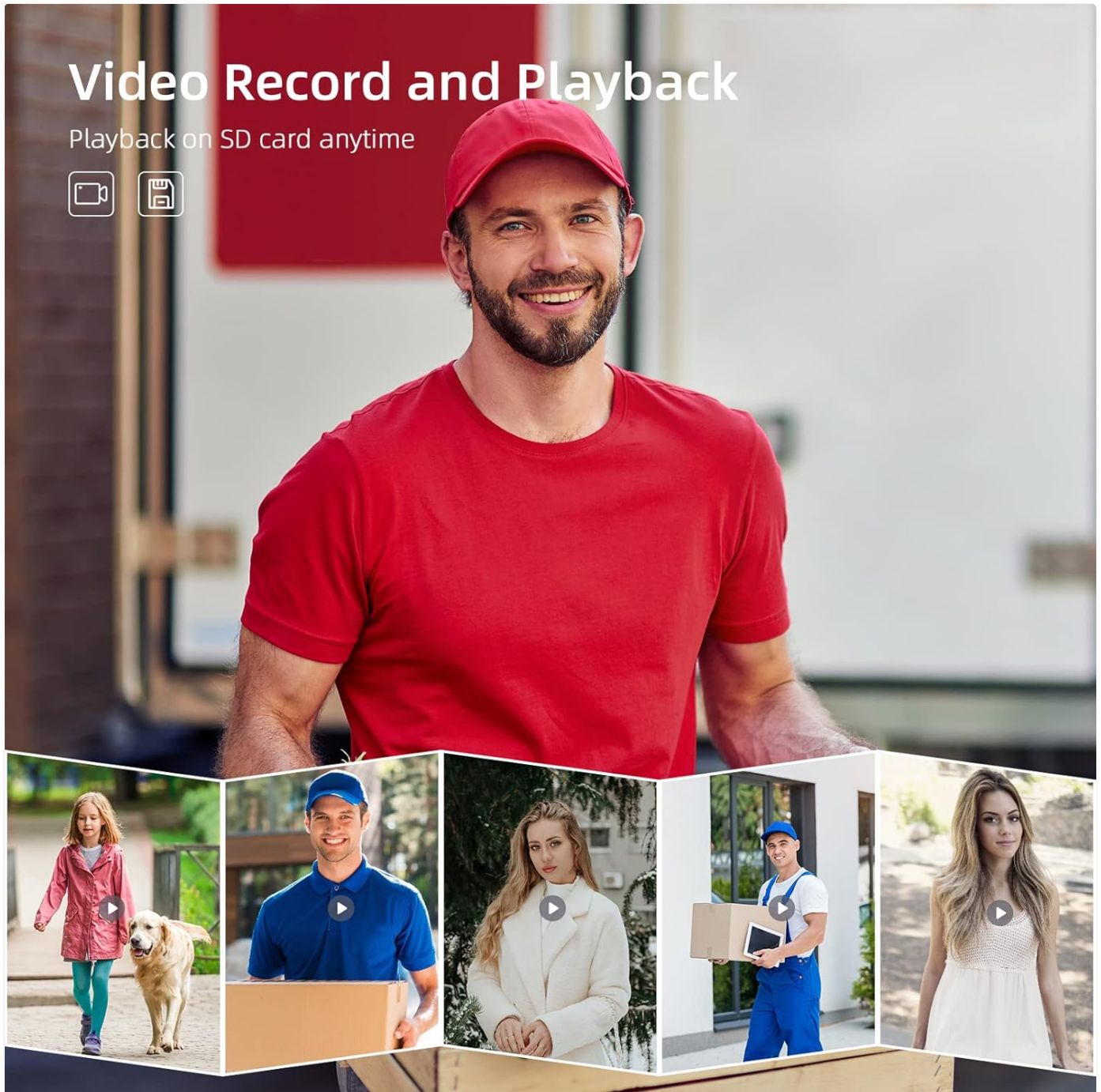


Figure 7: Video record and playback functionality.

### 6.3 Night Vision

The outdoor camera is equipped with infrared night vision, allowing clear visibility of visitors even in low-light conditions or complete darkness.

# HD 1080P & infrared night vision

See what happens outdoor clear in daytime or night



Figure 8: HD 1080P and infrared night vision capability.

## 6.4 Motion Detection

The system features smart motion detection. When motion is detected by the outdoor camera, it can automatically trigger a snapshot or video recording, enhancing your home security.

# Smart Motion Detection

Set Motion record, protect family security



Figure 9: Smart motion detection for enhanced security.

## 6.5 Monitor Menu Navigation

The 7-inch monitor features an easy-to-operate menu for settings and functions. Use the touch buttons to navigate through options such as Settings, Ring, Mode, Memory, Files, and About.

## 4 Wire Video Door Phone Intercom System

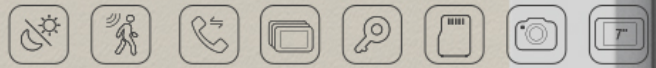


Figure 10: 7-inch 1080P screen with easy-operated menu.

## 7. MAINTENANCE

---

- **Cleaning:** Use a soft, dry cloth to clean the indoor monitor and outdoor camera. Do not use abrasive cleaners or solvents.
- **Outdoor Camera Lens:** Periodically check and clean the outdoor camera lens to ensure clear image quality.
- **Wiring:** Regularly inspect all wiring for any signs of damage or loose connections.
- **Software Updates:** Check the manufacturer's website for any available firmware updates to ensure optimal performance and security.

## 8. TROUBLESHOOTING

---

<b>Problem</b>	<b>Possible Cause</b>	<b>Solution</b>
No image on indoor monitor.	Power not connected. Loose wiring between camera and monitor. Faulty camera or monitor.	Check power adapter connection. Verify all 4-pin connections are secure. Contact customer support if problem persists.
No audio or poor audio quality.	Loose wiring. Microphone/speaker obstruction. Volume settings too low.	Check wiring connections. Ensure nothing is blocking the microphone or speaker. Adjust volume settings on the monitor.
Doorbell not ringing.	Loose doorbell button connection. Ringer volume off or too low. Faulty doorbell unit.	Check doorbell wiring. Adjust ringer volume in monitor settings. Contact customer support.
Cannot unlock electronic lock.	Incorrect wiring to the lock. Incompatible lock. Lock power issue.	Verify lock wiring according to lock manufacturer's instructions. Ensure the lock is compatible with the system. Check power supply to the electronic lock.

## 9. SPECIFICATIONS

---

Feature	Detail
Brand	TMEZON
Model Number	MZ-VDP-718EM/1-CP80/1-A1
Connectivity Technology	Wired
Indoor/Outdoor Usage	Indoor (Monitor), Outdoor (Camera)
Special Features	Motion Sensor, Night Vision
Controller Type	Push Button
Mount Type	Surface Mount
Enclosure Material	Acrylic
Alert Type	Motion Only
Waterproof Rating	IP65 (Outdoor Camera)
Power Source	Corded Electric
Voltage	240 Volts
Wattage	24 watts
Field Of View	100 Degrees
Photo Sensor Technology	CMOS
Video Capture Resolution	1080p
Video Capture Format	MPEG-4
Night Vision	Night Color (Infrared)

## 10. WARRANTY AND SUPPORT

---

TMEZON products are designed for reliability and performance. For warranty information, technical support, or service inquiries, please refer to the warranty card included with your product or visit the official TMEZON website. Keep your purchase receipt as proof of purchase.

**Contact Information:** Please refer to the contact details provided on the TMEZON official website or product packaging for the most up-to-date support information.

