

Manuals+

[Q & A](#) | [Deep Search](#) | [Upload](#)

manuals.plus /

- › [Corel](#) /
- › [Corel AfterShot Pro 3 RAW Photo Editing Software Instruction Manual](#)

Corel ASP3MLDLCAM

Corel AfterShot Pro 3 RAW Photo Editing Software Instruction Manual

Brand: Corel | Model: ASP3MLDLCAM

INTRODUCTION

This manual provides essential information for installing, operating, and maintaining your Corel AfterShot Pro 3 RAW Photo Editing Software. It is designed to help you maximize your experience with this powerful and efficient photo editor.

SETUP AND INSTALLATION

System Requirements

Ensure your system meets the following specifications for optimal performance:

- **Windows:** Windows 11, Windows 10, Windows 8.1, Windows 8, Windows 7 with latest service pack (64-bit editions). 64-bit Intel or AMD processor (multi-core recommended). 2 GB of RAM (4 GB recommended for HDR). 400 MB of available hard-disk space. 1024 x 768 resolution with 16-bit color display (1280 x 768 with 24-bit or higher recommended). 16 MB or more of dedicated VRAM for OpenCL Hardware Acceleration. Internet connection for online help and updates.
- **Mac:** macOS X 10.9 or later (64-bit edition), including macOS 10.15. All Intel Mac models supported. 2 GB of RAM (4 GB recommended for HDR). 250 MB of available hard-disk space. 1024 x 768 resolution with 16-bit color display. 16 MB or more of dedicated VRAM for OpenCL Hardware Acceleration. Internet connection for online help and updates.

Supported Image Formats

JPG, TIFF, and RAW files from most manufacturers (ARW, CR2, CRW, DCR, DNG, MRW, NEF, NRW, ORF, PEF, RAW, RW2, RWL, SR2).

Installation Steps (Key Card Version)

1. Locate your product key on the provided Key Card.
2. Visit the Corel website (corel.com) and navigate to the AfterShot Pro 3 download page.
3. Enter your product key to download the software installer.
4. Run the installer and follow the on-screen prompts to complete the installation.

5. Launch AfterShot Pro 3 and activate it using your product key when prompted.

OPERATING THE SOFTWARE

Interface Overview

Corel AfterShot Pro 3 features a user-friendly interface designed for efficient photo editing and management. The main workspace includes a directory view, image preview area, and adjustment panels.



Image Description: A screenshot of the Corel AfterShot Pro 3 software interface, displaying a waterfall landscape image in the main preview area. Panels for directory navigation, basic adjustments, and presets are visible on the sides.

Key Features

- **Non-Destructive Photo Editing:** Edit your RAW photos without altering the original files, preserving your creative options.
- **Simple Photo Management:** Easily view, store, and organize all your photos in one place without the need for importing.
- **Powerful Batch Processing:** Apply edits, presets, and watermarks to hundreds or thousands of photos simultaneously, saving significant time.

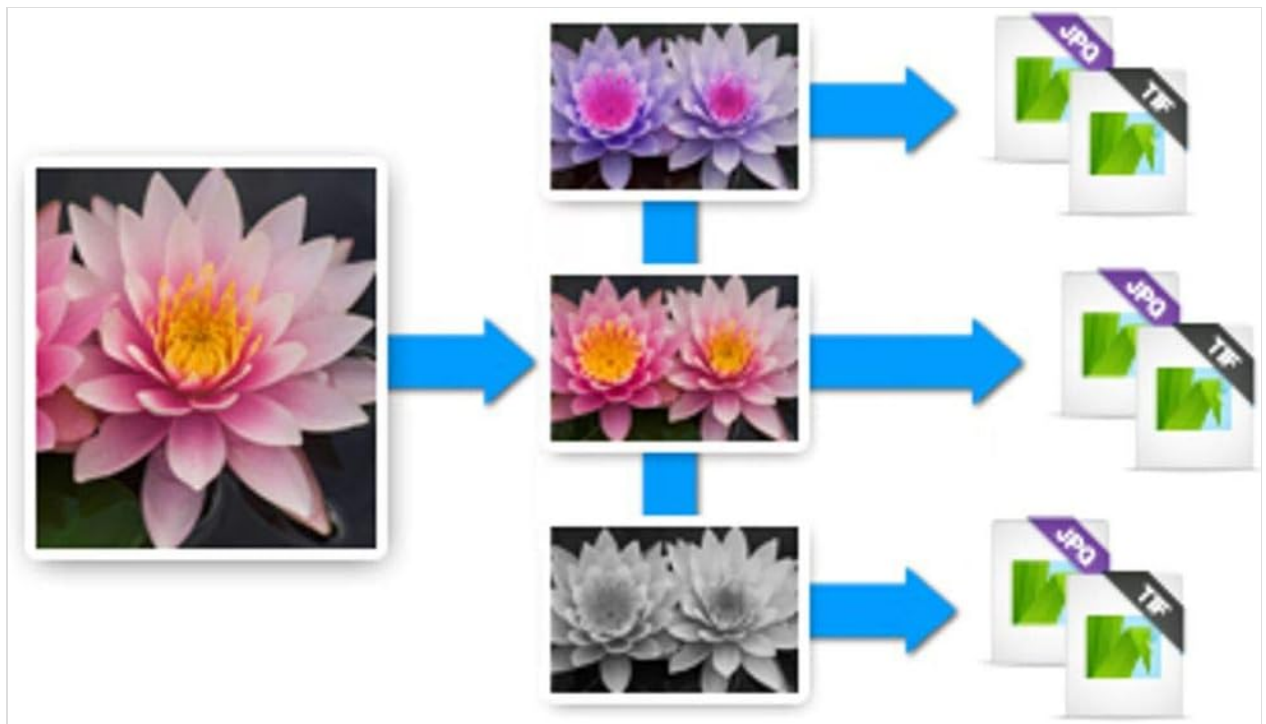


Image Description: A diagram illustrating the batch processing capabilities of AfterShot Pro 3, showing a single input image being processed into multiple output formats (JPG, TIF) with different effects (color, pink, black and white).

- **Time-Saving Tools:** Utilize integrated tools for watermarking, blemish removal, and image presets to automate repetitive tasks.
- **Enhanced Highlight Recovery:** Regain more detail in overexposed images with advanced highlight recovery controls.



Image Description: A side-by-side comparison of white flowers, showing a 'Before' image with blown-out highlights and an 'After' image with recovered detail in the highlights.

- **Faster Photo Retouching:** Quickly remove blemishes, dust, spots, and other imperfections from photos.



Image Description: A side-by-side comparison of a child's face, showing a 'Before' image with a small blemish and an 'After' image where the blemish has been removed.

- **Watermarking:** Brand and protect your work by applying custom watermarks to individual photos or batches.

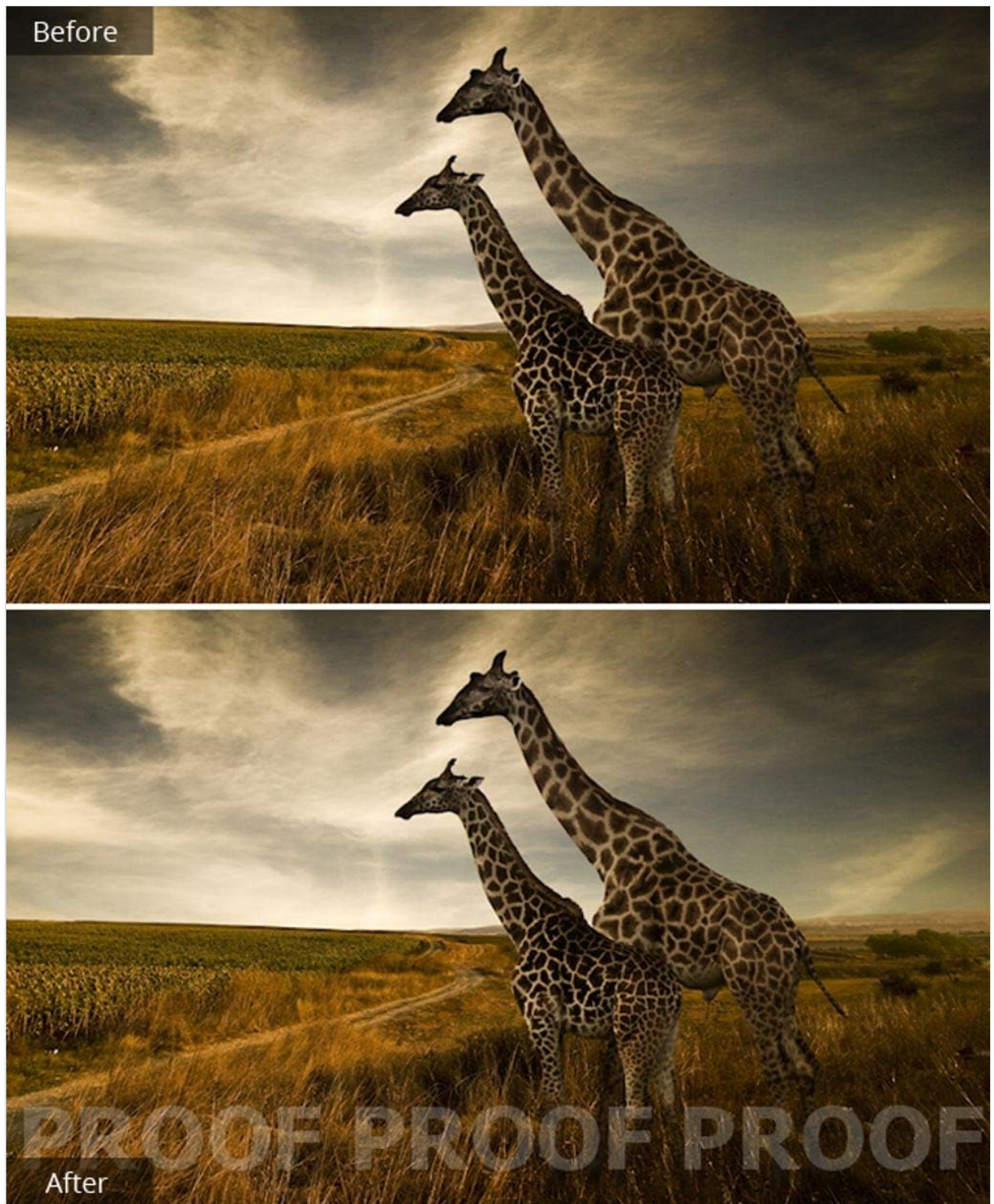


Image Description: A side-by-side comparison of a photo of two giraffes, showing a 'Before' image without a watermark and an 'After' image with a 'PROOF' watermark overlaid.

- **Lens Correction Development Kit and Updater:** Make and share your own lens corrections with the easy-to-use instructions. Easily update camera profiles.

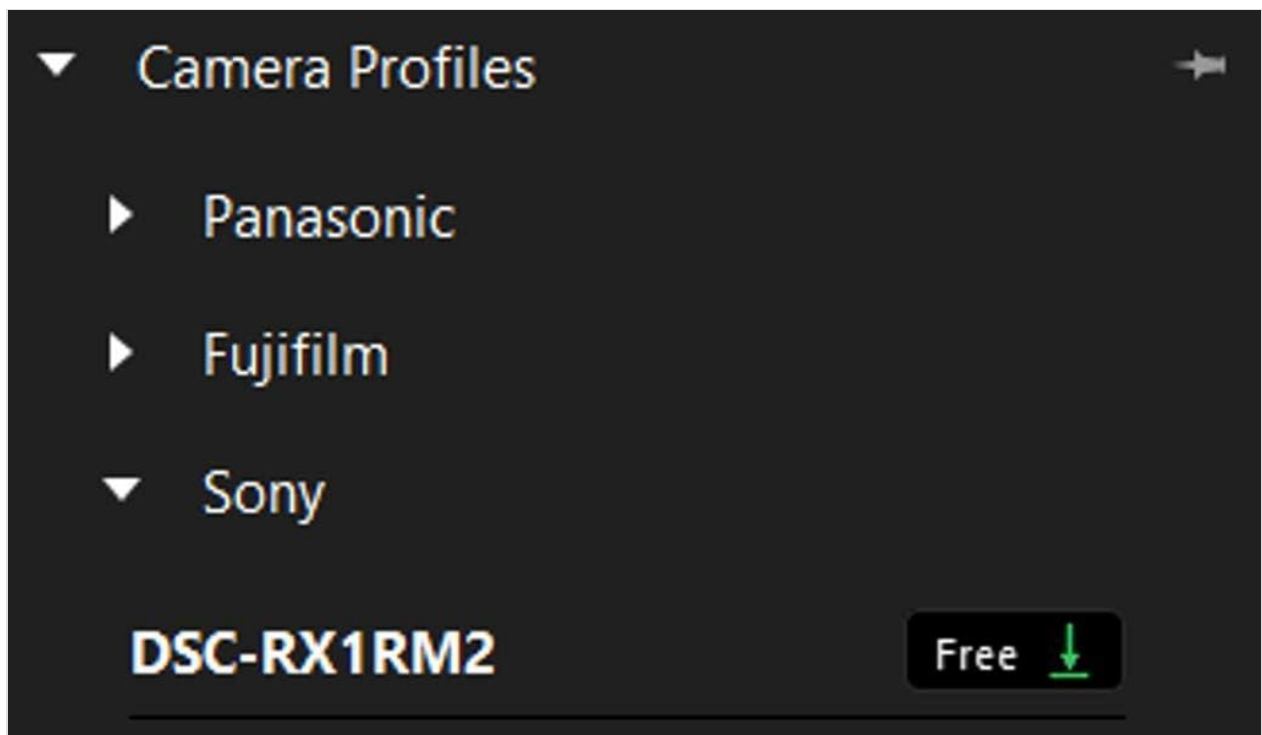


Image Description: A screenshot of the 'Camera Profiles' section within AfterShot Pro 3, showing lists of camera brands like Panasonic, Fujifilm, and Sony, with specific camera models and options to download free profiles.

- **Plugins:** Extend functionality with a wide range of plugins, many of which are free. These can enhance various aspects of your workflow.

Workflow and Customization

AfterShot Pro 3 offers a personalized workflow with a customizable workspace and easy integration with other photo editors. You can also create and share web galleries directly from the software.

MEDIA RESOURCES

Official Product Video

Video Description: This official product video from Corel Inc. highlights the speed and key features of AfterShot Pro 3, showcasing its capabilities as the world's fastest RAW photo editor. It demonstrates various editing functions and workflow benefits.

MAINTENANCE

Checking for Updates

Regularly check for software updates to ensure you have the latest features and bug fixes. You can typically find an 'Check for Updates' option within the software's Help menu.

Managing Plugins

Keep your plugins updated and manage them through the Plugin Manager within AfterShot Pro 3 to enhance functionality and compatibility.

TROUBLESHOOTING

For common issues and solutions, refer to the following resources:

- **Corel Knowledge Base:** Access a comprehensive database of articles and FAQs on various topics, including

installation, features, and known issues.

- **User Forum:** Engage with other AfterShot Pro users to find solutions, share tips, and discuss best practices.
- **Web-Based Help:** Utilize the integrated help system for quick answers and detailed information on specific features.

PRODUCT SPECIFICATIONS

- **Item Model Number:** ASP3MLDLCAM
- **Product Dimensions:** 1 x 1 x 1 inches
- **Item Weight:** 0.28 ounces
- **Manufacturer:** Corel
- **First Available Date:** May 11, 2016

SUPPORT AND RESOURCES

Corel provides extensive support resources to help you get the most out of AfterShot Pro 3:

- **Learning Center:** Access video tutorials, user guides, and web-based help directly from the Corel website.
- **User Forum:** Connect with a community of users for tips, tricks, and solutions.
- **FAQs:** Find answers to frequently asked questions about the software.
- **Free Trial:** A 30-day free trial is available on the Corel website to evaluate the software before purchase.

