

[manuals.plus](#) /

› [TECKNET](#) /

› [TECKNET Wireless Doorbell Instruction Manual - Model 841584](#)

TECKNET 841584

TECKNET Wireless Doorbell Instruction Manual

Model: 841584

1. INTRODUCTION

Thank you for choosing the TECKNET Wireless Doorbell. This manual provides detailed instructions for the installation, operation, and maintenance of your new doorbell system. Designed for convenience and reliability, this system features a 400-meter wireless range, IP65 waterproof rating, multiple melodies, and adjustable volume levels to suit various environments.



Image 1.1: Overview of the TECKNET Wireless Doorbell system highlighting its 400-meter wireless range. The image shows the doorbell button and receiver in a modern home setting by the sea.

2. PACKAGE CONTENTS

Please check the package contents to ensure all items are present:

- 1 x Waterproof Transmitter (Doorbell Button)
- 2 x Plug-in Receivers (Chime Units)
- 1 x CR2032 Battery (pre-installed in transmitter)
- Mounting Hardware (screws, anchors, double-sided adhesive tape)
- User Manual

3. SETUP AND INSTALLATION

3.1. Receiver Installation

1. Plug the receiver unit into a standard electrical outlet in your desired location. Ensure the outlet is easily accessible and not obstructed.
2. For optimal performance, place receivers centrally within your home to maximize signal coverage.

3.2. Transmitter Installation

The transmitter can be installed using either the provided double-sided adhesive tape or screws.

Method 1: Adhesive Tape Installation

1. Clean the mounting surface thoroughly to ensure it is dry and free of dust or grease.
2. Peel off one side of the double-sided adhesive tape and attach it to the back of the transmitter.
3. Peel off the other side of the tape and firmly press the transmitter onto the desired location next to your entrance door for at least 30 seconds.

Method 2: Screw Installation

1. Open the transmitter casing carefully using a small screwdriver to reveal the mounting holes.
2. Mark the positions for drilling on the wall.
3. Drill two holes and insert the provided wall anchors.
4. Secure the transmitter base to the wall using the screws.
5. Reattach the front cover of the transmitter.

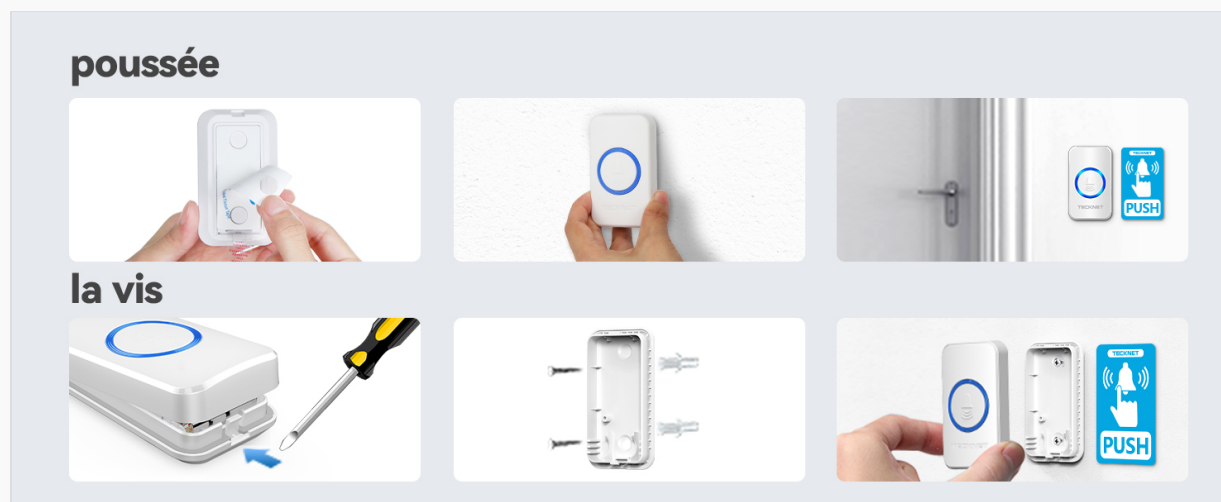


Image 3.1: Step-by-step guide for mounting the doorbell transmitter using either adhesive tape or screws.

4. OPERATING INSTRUCTIONS

4.1. Changing Melodies

The doorbell offers 60 different melodies. To change the melody:

1. Press the 'Music Selection' button on the side of the receiver to cycle through the available melodies.
2. Once you hear your preferred melody, stop pressing the button. The doorbell will remember your selection.

4.2. Adjusting Volume

There are 5 adjustable volume levels, ranging from 0dB (mute) to 110dB.

1. Press the 'Volume Control' button on the side of the receiver to adjust the volume level.
2. Each press will cycle through the 5 levels.

4.3. Mute Mode and LED Indicator

The doorbell features a mute mode (0dB) and a blue LED indicator for visual alerts.

- When the volume is set to 0dB, the doorbell is in mute mode, providing only a visual LED flash when

the button is pressed. This is useful for quiet environments or for individuals with hearing impairments.

- The blue LED on the receiver will flash when the doorbell is activated, providing a clear visual signal.



Image 4.1: Visual representation of the doorbell's features including 60 melodies, 5 volume levels, and 3 operating modes.



Image 4.2: The doorbell receiver operating in mute mode, ideal for maintaining quiet environments.

5. MAINTENANCE

5.1. Battery Replacement (Transmitter)

The transmitter uses one CR2032 battery, which has an estimated lifespan of 4.5 years. When the doorbell button no longer activates the chime, it may be time to replace the battery.

1. Carefully open the transmitter casing.
2. Remove the old CR2032 battery.
3. Insert a new CR2032 battery, ensuring correct polarity.
4. Close the casing securely.

5.2. Cleaning

To maintain the appearance and functionality of your doorbell:

- Wipe the transmitter and receiver with a soft, damp cloth.
- Do not use abrasive cleaners or solvents, as these can damage the surface.

ÉTANCHÉITÉ IP65 ET DURÉE DE VIE MAXIMALE DE 4,5 ANS

  
-4 °F à 140 °F (-20 °C à 60 °C)
Température de fonctionnement

 **4,5 ans**
Construit pour durer

 **IP65**

Image 5.1: The doorbell's IP65 waterproof rating, wide operating temperature range, and long battery life for the transmitter.

6. TROUBLESHOOTING

Problem	Possible Cause	Solution
Doorbell does not chime.	<ul style="list-style-type: none">• Transmitter battery is low or depleted.• Receiver is unplugged or power outage.• Distance between transmitter and receiver is too far or obstructed.• Receiver is in mute mode (0dB volume).	<ul style="list-style-type: none">• Replace the CR2032 battery in the transmitter.• Ensure the receiver is securely plugged into a working outlet.• Relocate the receiver closer to the transmitter or remove obstructions.• Increase the volume level on the receiver.
Interference from other devices.	<ul style="list-style-type: none">• Other wireless devices operating on similar frequencies.	<ul style="list-style-type: none">• Try changing the melody on the receiver, which may also change the operating frequency.• Relocate the receiver or transmitter away from potential sources of interference.
Shortened wireless range.	<ul style="list-style-type: none">• Thick walls, metal structures, or other environmental factors.• Low transmitter battery.	<ul style="list-style-type: none">• Ensure line of sight is as clear as possible.• Replace the transmitter battery.

7. SPECIFICATIONS

Model Number	841584
Wireless Range	Up to 400 meters (1300 feet) in open areas
Waterproof Rating	IP65 (Transmitter)
Melodies	60 selectable melodies
Volume Levels	5 levels (0dB to 110dB)
Operating Temperature	-20°C to 60°C (-4°F to 140°F)
Transmitter Battery	1 x CR2032 (included)
Receiver Power	AC 220V (Plug-in)
Transmitter Dimensions	7.2 cm x 4.2 cm
Receiver Dimensions	8.6 cm x 7.4 cm
Product Weight	251 grams



Image 7.1: Detailed view of the transmitter and receiver, including their dimensions and the location of control buttons.

8. WARRANTY AND SUPPORT

8.1. Warranty Information

TECKNET offers a **36-month warranty** for this product, subject to registration. Please refer to the warranty card included in your package for registration details and terms and conditions. This warranty covers manufacturing defects and ensures long-term reliability.

8.2. Return Policy

A hassle-free **30-day return policy** is provided for your peace of mind. If you are not satisfied with your purchase within 30 days, please contact your retailer for return options.

8.3. Customer Support

For any questions, technical assistance, or warranty claims, please contact TECKNET customer support. Contact information can typically be found on the TECKNET official website or on the product packaging.

