



Manuals.plus /

- › TORCHSTAR /
- › TORCHSTAR LED Safe Lighting Kit User Manual

## TORCHSTAR TSSTPK-SS50

# TORCHSTAR LED Safe Lighting Kit User Manual

Model: TSSTPK-SS50 | Brand: TORCHSTAR

## 1. INTRODUCTION

This manual provides comprehensive instructions for the installation, operation, and maintenance of your TORCHSTAR LED Safe Lighting Kit. This kit is designed to provide efficient and bright illumination for various spaces such as gun safes, cabinets, lockers, and showcases. It features linkable LED light bars, a motion sensor for automatic activation, and a UL-Listed power adapter for reliable performance.



Figure 1: TORCHSTAR LED Safe Lighting Kit components and an example installation in a safe.

## 2. PACKAGE CONTENTS

Please verify that all items listed below are included in your package:

- (6) 12-inch LED Light Bars
- (1) Motion Sensor
- (1) UL-Listed A/C Power Adapter
- (5) 12-inch Extension Cables
- (12) Hook and Loop Fasteners
- (15) Screws





## **EXTENDABLE RIGID LED LIGHT BAR**

Motion Sensor LED Under Cabinet Lighting Kit

Figure 2: All components included in the TORCHSTAR LED Safe Lighting Kit.

### **3. SPECIFICATIONS**

Feature	Detail
Color Temperature	5000 Kelvin (Daylight)
Light Source Type	LED
Brightness	900 Lumens (total)
Wattage	10.8 Watts
Voltage	100-240 Volts AC Input
Material	Polyvinyl Chloride (PVC)
Dimensions (each light bar)	11.8"L x 0.41"W x 0.59"H
Lifespan	30,000 hours
Motion Sensor Range	Up to 26.25 ft

## Hidden corner light, perfectly illuminates small spaces



Figure 3: Detailed dimensions of the kit components.

### 4. SETUP AND INSTALLATION

The TORCHSTAR LED Safe Lighting Kit offers flexible installation options to suit various applications. No electrician is required for installation.

#### 4.1 Connecting the Light Bars

1. Connect the LED light bars to each other using the integrated connectors. Ensure the lock buckles are securely fastened for a tighter connection.
2. Use the included 12-inch extension cables to bridge gaps or extend the reach between light bars as needed.
3. Connect the motion sensor to the first light bar in your chain. The motion sensor acts as the central power input.
4. Plug the UL-Listed A/C Power Adapter into the motion sensor.



# THREE INSTALLATION WAYS, NO NEED FOR ELECTRICIAN

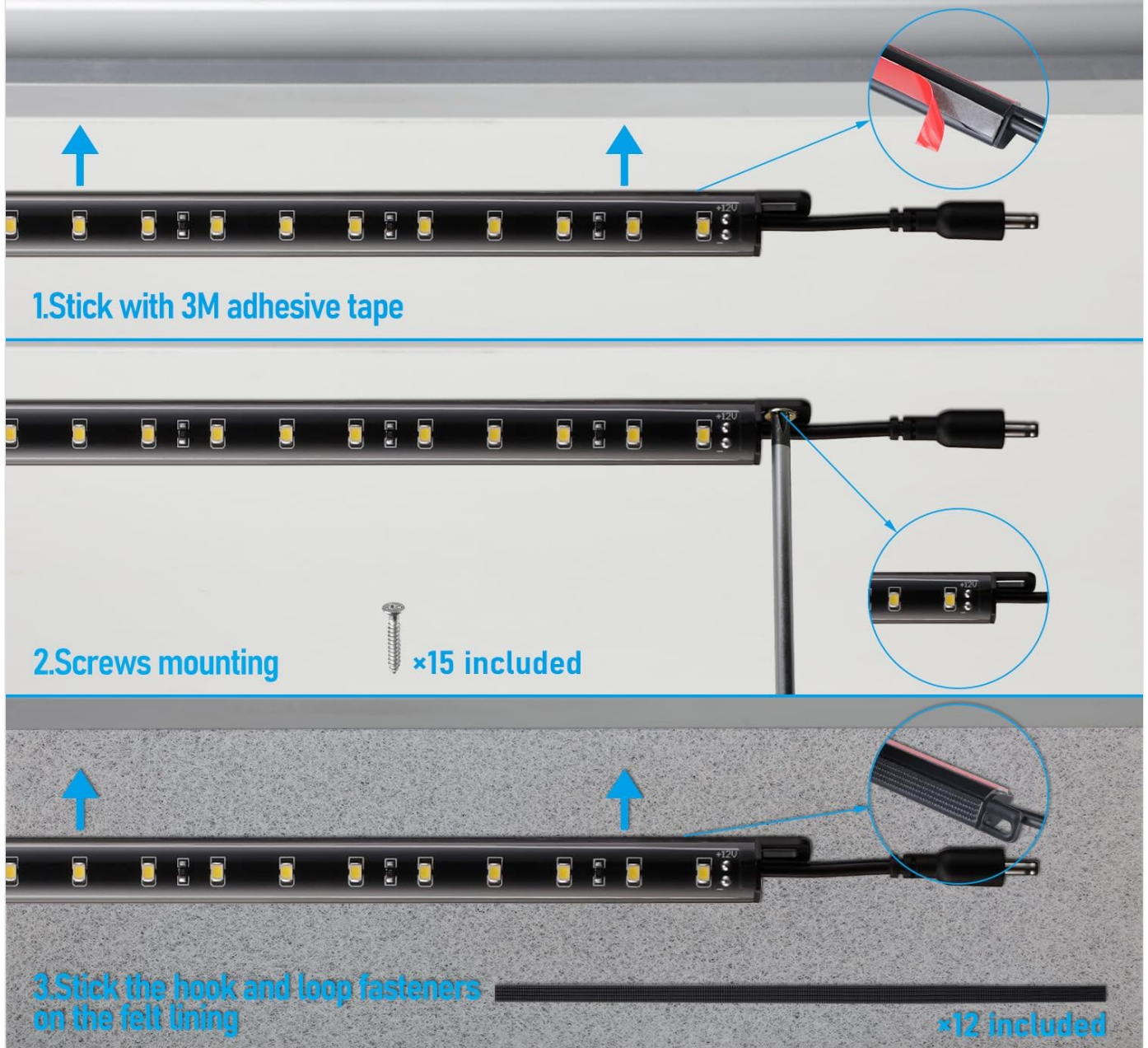


Figure 4: Light bars can be connected directly or via extension cables. Ensure secure connections.

*Note:* It is recommended to connect up to 6 light bars in a single run with the included power adapter. For connecting 8 to 10 light bars, a higher wattage power adapter (not included) may be required to ensure adequate brightness for all lights.

## 4.2 Mounting the Light Bars

Choose one of the following three methods for mounting your light bars:

- 3M Adhesive Tape:** The light bars feature a 90-degree triangular body with pre-applied 3M adhesive tape on the backing. Simply peel off the protective film and firmly press the light bar onto a clean, dry surface. This method is ideal for smooth surfaces and corners.
- Screws Mounting:** For a more permanent installation, use the included 15 screws. The light bars have pre-drilled holes for screw mounting. Secure the light bars to the desired surface using a screwdriver.
- Hook and Loop Fasteners:** For surfaces like felt lining inside gun safes, use the included 12 hook and loop fasteners. Attach one side of the fastener to the light bar and the other to the felt surface. This allows for easy repositioning or removal.

- Two light bars can directly connect together or use included extension cables to connect
- Recommend connect up to 6 light bars at a single run



Figure 5: Three available installation methods for the light bars.

### 4.3 Positioning the Motion Sensor

Mount the motion sensor in a location where it can effectively detect movement. The sensor has a detection range of up to 26.25 feet and a 120-degree detection angle. For optimal performance in a safe or cabinet, position it near the opening to ensure it activates when the door is opened.



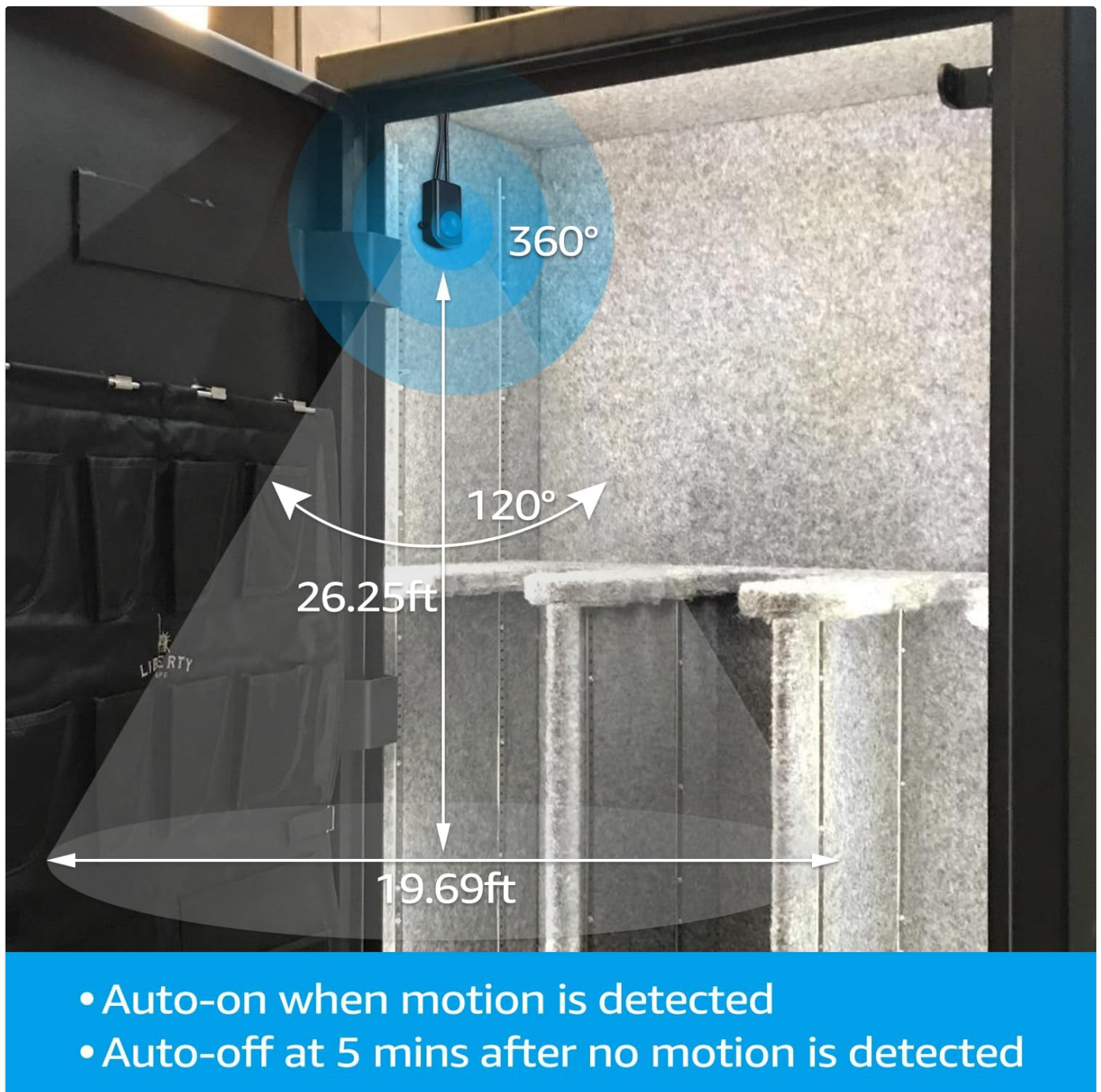


Figure 6: Motion sensor detection range and angle.

## 5. OPERATION

The TORCHSTAR LED Safe Lighting Kit operates automatically via its integrated motion sensor:

- When motion is detected within the sensor's range (up to 26.25 feet), the LED light bars will immediately turn on.
- The lights will remain on as long as continuous motion is detected.
- After approximately 5 minutes of no detected movement, the lights will automatically shut off to conserve energy.

## 6. MAINTENANCE

The TORCHSTAR LED Safe Lighting Kit requires minimal maintenance. To ensure optimal performance and longevity:

- Periodically wipe the light bars and motion sensor with a soft, dry cloth to remove dust and debris.
- Do not use abrasive cleaners or solvents, as these may damage the product's finish or electronic components.
- Ensure the motion sensor's lens is clear and unobstructed for proper operation.



## 7. TROUBLESHOOTING

If you encounter issues with your lighting kit, please refer to the following common problems and solutions:

Problem	Possible Cause	Solution
Lights do not turn on.	No power, loose connection, or obstructed motion sensor.	Check if the power adapter is securely plugged into a working outlet. Ensure all light bars and the motion sensor are properly connected. Verify that the motion sensor is not obstructed and has a clear line of sight.
Lights flicker or are dim.	Insufficient power for the number of connected light bars.	Reduce the number of connected light bars to 6 or fewer. If you need more than 6 light bars, consider using a higher wattage power adapter (sold separately) to support up to 10 light bars.
Lights turn off too quickly or stay on too long.	Motion sensor sensitivity or continuous motion.	Ensure there is no continuous motion within the sensor's range if lights stay on. Check the sensor's placement to ensure it's not detecting unintended motion or is too far from the intended detection area.

## 8. WARRANTY AND SUPPORT

This TORCHSTAR LED Safe Lighting Kit comes with a **3-year warranty** from the date of purchase, covering defects in materials and workmanship.

For warranty claims, technical support, or any inquiries not covered in this manual, please refer to the TORCHSTAR official website or contact the retailer from whom you purchased the product. Please have your model number (TSSTPK-SS50) and proof of purchase ready when contacting support.