

Kwikset CL101105

Kwikset CL101105 Standard Duty Commercial Passage Lever Instruction Manual

Model: CL101105 | Brand: Kwikset

INTRODUCTION

This manual provides detailed instructions for the installation, operation, and maintenance of your Kwikset CL101105 Standard Duty Commercial Passage Lever. Please read this manual thoroughly before installation and use to ensure proper function and longevity of the product. This passage lever is designed for light to medium traffic flow areas and is suitable for hallway or closet doors where no locking mechanism is required.



Image: Kwikset CL101105 Standard Duty Commercial Passage Lever. This image displays the complete lever assembly, including the cylindrical chassis, the passage lever handle, and the latch mechanism, all in a satin chrome finish.

SAFETY INFORMATION

- Always wear appropriate safety gear, such as gloves and eye protection, during installation.
- Ensure all components are securely fastened before use.
- Do not modify the product in any way, as this may void the warranty and compromise safety.
- Keep small parts away from children.

WHAT'S IN THE BOX

Verify that all components are present before beginning installation:

- Lever Handles (2)
- Cylindrical Chassis

- Latch Mechanism
- Strike Plate
- Mounting Screws

SETUP AND INSTALLATION

This section outlines the steps for installing the Kwikset CL101105 Passage Lever. Ensure your door is prepared with standard bore holes (typically 2-1/8 inches for the main bore and 1 inch for the latch bore) and a backset of 2-3/8 inches or 2-3/4 inches.

Tools Required:

- Phillips Head Screwdriver
- Measuring Tape
- Pencil
- Chisel (optional, for strike plate mortise)

Installation Steps:

1. **Prepare the Door:** Ensure the door has the correct bore holes and backset. The backset is the distance from the edge of the door to the center of the main bore hole. This lever supports adjustable backsets of 2-3/8 inches to 2-3/4 inches.
2. **Install the Latch:** Insert the latch mechanism into the edge bore hole of the door. Ensure the bevel of the latch bolt faces the door frame. Secure it with the provided screws.
3. **Install the Exterior Lever Assembly:** Place the exterior lever assembly through the main bore hole, ensuring the spindle engages with the latch mechanism.
4. **Install the Interior Lever Assembly:** Align the interior lever assembly with the exterior assembly and the spindle. Secure both assemblies together using the through-bolts or mounting screws. The through-bolt can be removed for easier installation if preferred.
5. **Install the Strike Plate:** Mark the position of the latch bolt on the door frame. Chisel out a shallow mortise if necessary, and then secure the strike plate to the door frame with screws.
6. **Test Operation:** Close the door and test the lever operation. The lever should retract the latch bolt smoothly.

OPERATING INSTRUCTIONS

The Kwikset CL101105 is a passage lever, meaning it does not have a locking function. It is designed for doors that require a latching mechanism but no security.

- To open the door, simply depress the lever handle. This will retract the latch bolt, allowing the door to open.
- To close the door, push the door shut. The latch bolt will automatically retract and extend as it meets the strike plate, securing the door in the closed position.

MAINTENANCE

Regular maintenance ensures the smooth operation and extends the lifespan of your passage lever.

- **Cleaning:** Clean the lever with a soft, damp cloth. Avoid abrasive cleaners, solvents, or harsh chemicals, as these can damage the finish.
- **Lubrication:** Periodically apply a small amount of silicone-based lubricant to the latch bolt and internal mechanisms if operation becomes stiff. Do not use oil-based lubricants, as they can attract dust and debris.

- **Tightening Screws:** Check and tighten all mounting screws periodically to ensure the lever remains securely attached to the door.

TROUBLESHOOTING

Problem	Possible Cause	Solution
Lever is stiff or hard to turn.	Accumulation of dirt or lack of lubrication.	Clean the lever and apply a silicone-based lubricant to the latch bolt and internal mechanisms.
Latch bolt does not retract fully.	Misalignment of components or debris.	Check for obstructions. Ensure the lever assemblies are properly aligned and screws are tightened. Re-lubricate if necessary.
Lever feels loose on the door.	Mounting screws are loose.	Tighten all mounting screws securely.
Door does not latch properly.	Strike plate misalignment or incorrect backset.	Adjust the strike plate position on the door frame. Verify the backset setting during installation.

SPECIFICATIONS

- **Model:** CL101105
- **Brand:** Kwikset
- **Type:** Standard Duty Commercial Passage Lever
- **ANSI Rating:** A156.2 Grade 2 (Tested to over 400,000 cycles)
- **UL Rating:** 3 Hour (Suitable for fire doors)
- **ADA Compliance:** Yes
- **Backset:** Adjustable 2-3/8 inches to 2-3/4 inches
- **Material:** Cylindrical Steel Coated with Zinc Dichromate (Corrosion Resistance)
- **Finish:** Chrome
- **Product Dimensions:** 7.76 x 9.02 x 4.37 inches
- **Weight:** 2 Pounds

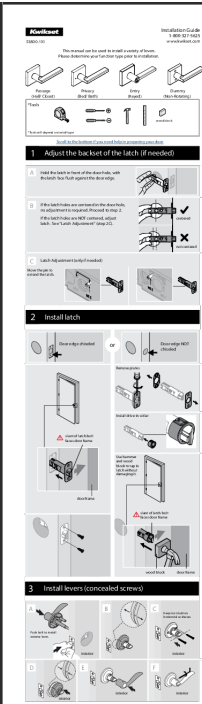
WARRANTY INFORMATION

This Kwikset CL101105 Standard Duty Commercial Passage Lever comes with a limited lifetime warranty. For specific details regarding warranty coverage, terms, and conditions, please refer to the warranty card included with your product or visit the official Kwikset website.

CUSTOMER SUPPORT

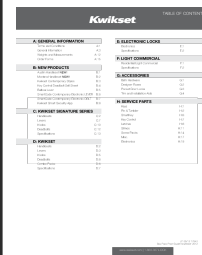
If you encounter any issues or have questions regarding your Kwikset CL101105 Passage Lever, please contact Kwikset customer support. Contact information can typically be found on the product packaging or the official Kwikset website. For more information, visit the [Kwikset Store on Amazon](#).





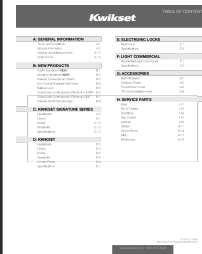
[Kwikset Henley Lever Installation Guide](#)

A comprehensive guide for installing Kwikset Henley levers, covering passage, privacy, entry, and dummy functions. Includes step-by-step instructions for latch adjustment, installation, and strike plate fitting.



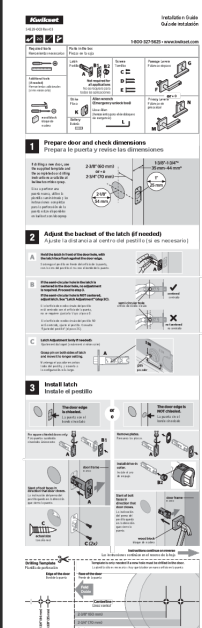
[Kwikset Door Hardware Catalog & Specifications](#)

Explore the comprehensive Kwikset catalog featuring a wide range of door hardware, including handlesets, levers, knobs, deadbolts, electronic locks, and accessories. Find detailed specifications, product information, and pricing for Kwikset's SmartKey and other security solutions.



[Kwikset Product Catalog and Price Guide](#)

Comprehensive catalog detailing Kwikset's range of door hardware, including handlesets, levers, knobs, deadbolts, electronic locks, and accessories. Features product specifications, functions, and ordering information.



[Kwikset 54529-003 Lever Lock Installation Guide](#)

Step-by-step instructions for installing Kwikset 54529-003 passage and privacy lever door locks, including door preparation, latch adjustment, and lever installation.



[Kwikset Lever Installation Guide](#)

Step-by-step instructions for installing Kwikset door levers, including latch adjustment and testing, ensuring proper function and security for your doors.



[Kwikset Product Catalog and Price List - March 2021/2022](#)

Comprehensive catalog and price list for Kwikset door locks, including handlesets, levers, knobs, deadbolts, and electronic smart locks. Features product specifications, warranty information, and ordering details.