

Manuals+

[Q & A](#) | [Deep Search](#) | [Upload](#)

manuals.plus /

- › [Beldray](#) /
- › [Beldray LA024275TQ 2-in-1 Spray Window Cleaner User Manual](#)

Beldray LA024275TQ

Beldray LA024275TQ 2-in-1 Spray Window Cleaner User Manual

Model: LA024275TQ | Brand: Beldray

INTRODUCTION

This manual provides instructions for the Beldray LA024275TQ 2-in-1 Spray Window Cleaner. This device is designed to simplify window cleaning by combining a spray function, a microfiber cleaning pad, and an integrated squeegee. It is suitable for cleaning windows, tiles, and mirrors, aiming for streak-free results.

SAFETY INSTRUCTIONS

- Ensure the cap is securely tightened before use to prevent leaks.
- Do not use with corrosive or abrasive cleaning solutions.
- Keep out of reach of children.
- Store in a cool, dry place.
- Do not expose to extreme temperatures.

PRODUCT COMPONENTS

The Beldray LA024275TQ 2-in-1 Spray Window Cleaner consists of the following main parts:

- **Spray Bottle:** Holds up to 200 ml of cleaning solution.
- **Integrated Spray Trigger:** For dispensing cleaning solution.
- **Removable Microfiber Pad:** Attaches to the squeegee head for washing and collecting dirt.
- **Squeegee Blade:** For streak-free drying of surfaces.
- **Ergonomic Handle:** For comfortable grip and control.

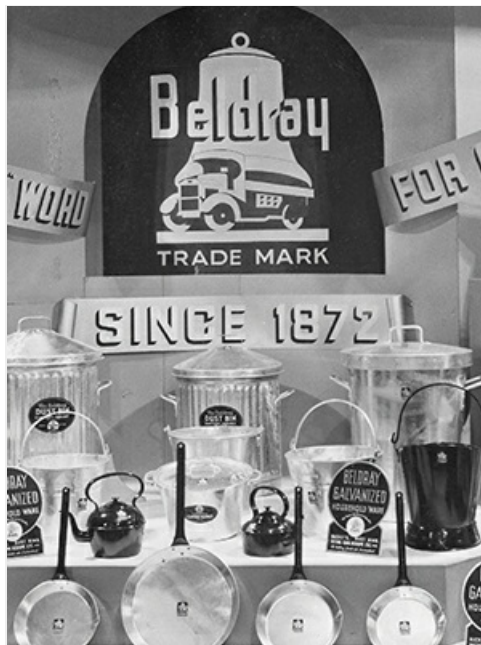


Image: The Beldray 2-in-1 Spray Window Cleaner highlighting its removable microfiber pad and lightweight design.

SETUP

1. **Fill the Spray Bottle:** Unscrew the cap of the spray bottle. Fill the bottle with your preferred window cleaning solution (up to 200 ml capacity). Securely screw the cap back on to prevent leaks.
2. **Attach Microfiber Pad:** Ensure the microfiber pad is clean and properly attached to the squeegee head. It should fit snugly over the cleaning surface.

OPERATING INSTRUCTIONS

Follow these steps for effective cleaning:

1. **Spray the Surface:** Hold the cleaner firmly and press the spray trigger to apply cleaning solution evenly onto the window, mirror, or tile surface.
2. **Wash with Microfiber:** Use the microfiber pad to gently scrub and loosen dirt, grime, and grease from the surface. The pad is designed to collect and retain debris.
3. **Squeegee Dry:** Position the squeegee blade at the top of the wet surface. Apply light, even pressure and pull the squeegee downwards in a single, continuous stroke. Overlap strokes slightly to avoid streaks. Wipe the blade clean after each stroke with a cloth if necessary.



Image: Visual guide demonstrating the three steps of using the window cleaner: spraying, washing, and squeegeeing.



Image: A hand demonstrating the spray function of the window cleaner on a tiled wall.



Image: A hand demonstrating the squeegee function of the window cleaner, removing liquid from a surface.

MAINTENANCE

- **Microfiber Pad Cleaning:** The microfiber pad is removable and machine washable. Wash it regularly to maintain its cleaning effectiveness. Allow it to air dry completely before reattaching.
- **Squeegee Blade Care:** Inspect the rubber squeegee blade for any nicks or damage. A damaged blade can cause streaks. Replace if necessary.
- **Bottle Cleaning:** Rinse the spray bottle thoroughly with clean water after each use, especially if using different cleaning solutions.
- **Storage:** Store the window cleaner in a clean, dry place away from direct sunlight and extreme temperatures.



Image: A close-up view of the microfiber pad, emphasizing its texture for cleaning.

TROUBLESHOOTING

Problem	Possible Cause	Solution
Streaks left on surface	<ul style="list-style-type: none"> • Dirty squeegee blade • Damaged squeegee blade • Too much cleaning solution • Improper squeegee technique 	<ul style="list-style-type: none"> • Wipe blade clean after each stroke. • Replace damaged blade. • Use less solution or dilute if concentrated. • Ensure even pressure and overlapping strokes.
Spray nozzle clogged or not spraying	<ul style="list-style-type: none"> • Dried cleaning solution • Nozzle obstruction 	<ul style="list-style-type: none"> • Rinse nozzle under warm water. • Clear any visible obstruction with a thin wire.
Leaking from bottle cap	<ul style="list-style-type: none"> • Cap not securely tightened • Damaged cap or bottle thread 	<ul style="list-style-type: none"> • Ensure cap is tightly screwed on. • Inspect for damage; if damaged, discontinue use.

SPECIFICATIONS

- **Model Number:** LA024275TQ
- **Brand:** Beldray
- **Dimensions (L x H):** 25 cm x 27 cm
- **Weight:** 150 grams
- **Spray Bottle Capacity:** 200 ml
- **Blade Material:** Microfiber (pad), Rubber (squeegee)
- **Handle Material:** Rubber
- **Color:** Turquoise
- **Country of Origin:** China
- **UPC:** 055319134915

WARRANTY AND SUPPORT

For warranty information or product support, please refer to the documentation included with your purchase or visit the official Beldray website.



