

TOTOLINK A3002RU-V2

TOTOLINK A3002RU-V2 Dual-Band Gigabit Wireless Router User Manual

1. INTRODUCTION

This manual provides detailed instructions for the installation, configuration, and operation of your TOTOLINK A3002RU-V2 Dual-Band Gigabit Wireless Router. The A3002RU-V2 is designed to deliver high-speed wireless connectivity and robust network performance for homes and offices. It complies with the latest IEEE 802.11ac Wave 2 standards, supporting simultaneous dual-band operation (2.4 GHz and 5 GHz) for a combined Wi-Fi speed of up to 1167 Mbps. Equipped with full gigabit WAN and LAN ports, it ensures fast wired connections, while its multi-functional USB 2.0 port offers versatile capabilities such as FTP, Samba, and DLNA server functions, as well as device charging.

2. PACKAGE CONTENTS

Please verify that all items are present in your package. If any item is missing or damaged, contact your retailer for assistance.

- TOTOLINK A3002RU-V2 Wireless Router
- Power Adapter
- Ethernet (RJ-45) Cable
- Quick Installation Guide

3. PRODUCT OVERVIEW

Familiarize yourself with the physical components of your TOTOLINK A3002RU-V2 router.



Figure 3.1: Front and top view of the TOTOLINK A3002RU-V2 router, showing the four external antennas and ventilation design.



Figure 3.2: Rear panel of the TOTOLINK A3002RU-V2 router, displaying the power switch, DC input, Reset button, USB 2.0 port, WAN port, and four LAN ports.

3.1. Ports and Buttons

- **Power On/Off Switch:** Toggles the router's power.
- **DC In:** Connects to the provided power adapter.
- **RST (Reset) Button:** Press and hold for approximately 5-10 seconds to restore factory default settings.
- **USB 2.0 Port:** For connecting USB storage devices to enable FTP, Samba, or DLNA server functions, or for charging compatible devices.
- **WAN Port (Yellow):** Connects to your modem or internet service provider's network.
- **LAN Ports (Orange):** Connects to wired devices such as computers, smart TVs, or gaming consoles.

4. SETUP

4.1. Hardware Connection

1. **Power Off:** Ensure your modem and router are powered off.
2. **Connect Modem to Router:** Connect one end of the Ethernet cable to the LAN port of your modem and the other end to the **WAN** (yellow) port of the TOTOLINK A3002RU-V2 router.

3. **Connect Power:** Connect the power adapter to the DC In port of the router and plug it into a power outlet.
4. **Power On:** Power on your modem first, then power on the TOTOLINK A3002RU-V2 router using the On/Off switch. Wait for the indicator lights to stabilize, typically indicating a successful connection.
5. **Connect Devices (Optional):** For wired connections, connect your computer or other network devices to any of the **LAN** (orange) ports using Ethernet cables.

4.2. Initial Configuration (Web Interface)

To configure your router, you will need to access its web-based management interface.

1. **Connect to Router:** Connect your computer to the router either via an Ethernet cable to a LAN port or wirelessly using the default Wi-Fi network name (SSID) and password found on the router's label.
2. **Open Web Browser:** Launch a web browser (e.g., Chrome, Firefox, Edge).
3. **Access Login Page:** In the address bar, type `http://192.168.1.1` (or the IP address specified on the router's label) and press Enter.
4. **Login:** Enter the default username and password. These are typically `admin` for both, but refer to the router's label or quick installation guide for exact credentials.
5. **Follow Setup Wizard:** Upon successful login, you will likely be guided through a Quick Setup Wizard to configure your internet connection type, Wi-Fi network name (SSID), and password. It is highly recommended to change the default Wi-Fi password and router login password for security.

5. OPERATING INSTRUCTIONS

5.1. Wireless Network Configuration

The A3002RU-V2 operates on two frequency bands simultaneously:

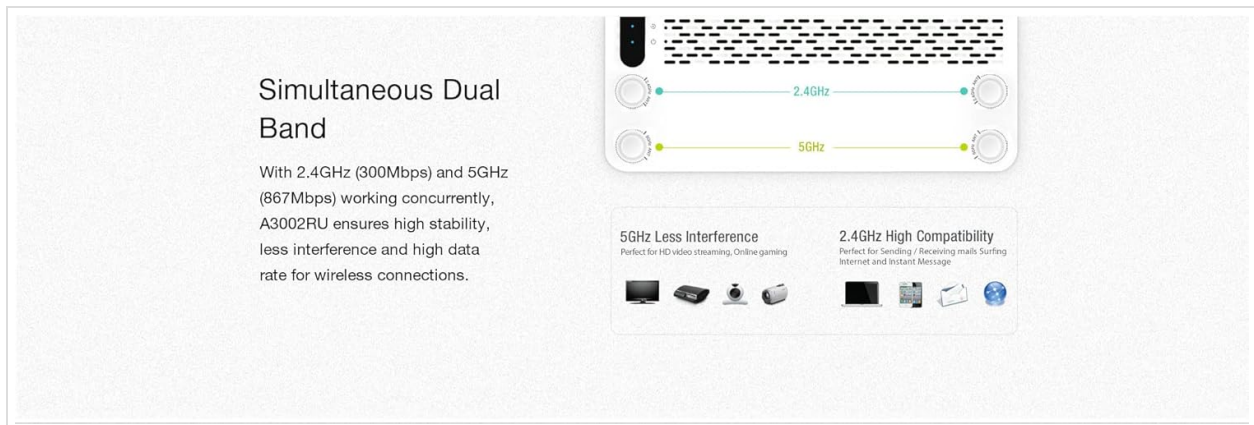


Figure 5.1: Illustration of the router's simultaneous dual-band capability, showing 2.4GHz for wider coverage and 5GHz for higher speed and less interference.

- **2.4 GHz Band:** Offers wider coverage and better penetration through walls, suitable for general internet use, browsing, and connecting devices further away.
- **5 GHz Band:** Provides faster speeds and less interference, ideal for bandwidth-intensive activities like HD video streaming, online gaming, and connecting devices in closer proximity to the router.

You can configure separate SSIDs and passwords for each band or use a single SSID with band steering enabled (if available in your firmware) through the router's web interface under the Wireless Settings section.

5.2. Multi-functional USB 2.0 Port

The USB 2.0 port on the rear panel offers several functionalities when a USB storage device (e.g., flash drive, external hard drive) is connected.



Figure 5.2: Visual representation of the USB 2.0 port's capabilities, including FTP server, Samba server, DLNA server, and USB charging.

- **FTP Server:** Allows you to access files on the connected USB storage device from anywhere over the internet (requires proper configuration and port forwarding).
- **Samba Server (Network Share):** Enables local network users to access and share files on the connected USB storage device.
- **DLNA Server:** Allows compatible media players (e.g., smart TVs, game consoles) to stream multimedia content (photos, music, videos) directly from the connected USB storage device.
- **USB Charging:** The port can also be used to charge compatible smartphones or tablets.

These features can be configured and managed through the router's web interface, typically found under 'USB Application' or 'Storage Sharing' settings.

6. MAINTENANCE

6.1. Firmware Upgrade

Regularly updating the router's firmware can improve performance, add new features, and enhance security. Visit the official TOTOLINK website for the latest firmware version for your A3002RU-V2 model. The upgrade process is typically performed through the router's web interface under 'System Tools' or 'Firmware Upgrade'. Follow the instructions provided with the firmware file carefully.

6.2. Factory Reset

A factory reset will revert all router settings to their default values. This can be useful for troubleshooting persistent issues or when preparing to transfer ownership of the router. To perform a factory reset:

1. With the router powered on, locate the **RST** button on the rear panel.
2. Use a paperclip or a thin object to press and hold the **RST** button for approximately 5-10 seconds until the indicator lights flash.
3. Release the button and wait for the router to restart. All settings will be reset.

7. TROUBLESHOOTING

This section addresses common issues you might encounter with your router.

- **No Internet Access:**

- Check if the WAN port LED is lit. If not, ensure the Ethernet cable from your modem is securely connected.
- Verify your modem is working correctly.
- Log into the router's web interface and check the WAN status. Ensure your internet connection settings (e.g., PPPoE, Dynamic IP) are correctly configured.
- Restart both your modem and router.

- **Cannot Connect to Wi-Fi:**

- Ensure the Wi-Fi LED on the router is lit.
- Verify you are selecting the correct Wi-Fi network name (SSID) and entering the correct password.
- Move closer to the router to check for signal strength issues.
- Restart the router.

- **Slow Wi-Fi Speed:**

- Ensure your device is connected to the 5 GHz band for optimal speed, especially for close-range use.
- Reduce interference by placing the router away from other electronic devices (microwaves, cordless phones).
- Consider changing the Wi-Fi channel in the router's settings to avoid congestion with neighboring networks.
- Check for firmware updates.

- **Forgot Router Login Password:**

- Perform a factory reset (refer to Section 6.2) to revert to the default login credentials. Note that this will erase all your custom settings.

8. SPECIFICATIONS

Below are the technical specifications for the TOTOLINK A3002RU-V2 Dual-Band Gigabit Wireless Router.






| Feature | Description |
|-------------------|--|
| Brand | TOTOLINK |
| Model Name | A3002RU-V2 |
| Wireless Standard | IEEE 802.11ac Wave 2, 802.11a/b/g/n |
| Frequency Band | Dual Band (2.4 GHz & 5 GHz) |
| Wi-Fi Speed | Up to 1167 Mbps (300 Mbps @ 2.4 GHz, 867 Mbps @ 5 GHz) |
| Antennas | 4 x Omni-directional Antennas |
| WAN Port | 1 x 10/100/1000 Mbps Gigabit Ethernet |
| LAN Ports | 4 x 10/100/1000 Mbps Gigabit Ethernet |

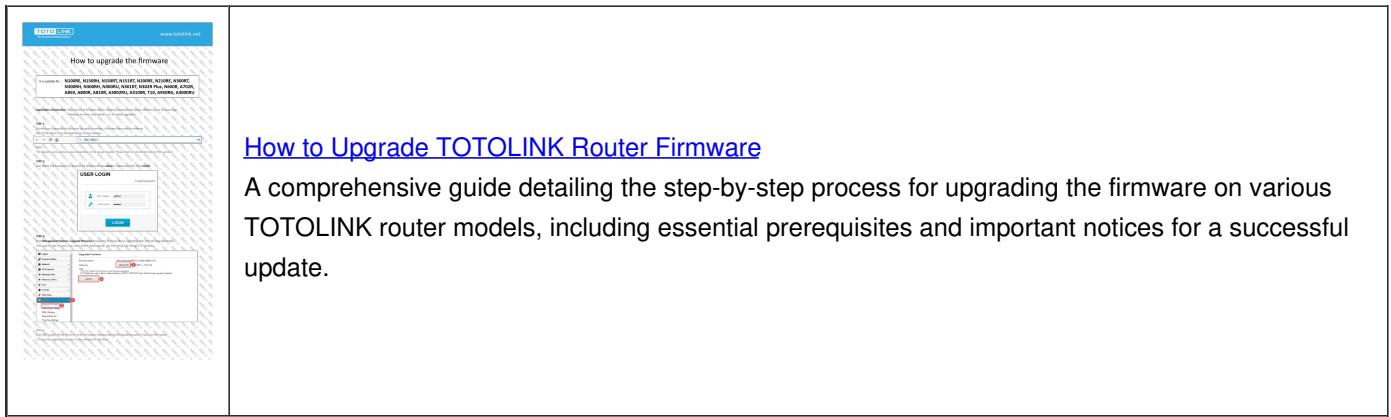
| Feature | Description |
|-------------------------|---|
| USB Port | 1 x USB 2.0 (for FTP, Samba, DLNA server, charging) |
| Connectivity Technology | Ethernet, Wi-Fi |
| Compatible Devices | Laptop, Smartphone, Tablet |
| Color | Black |
| Operating System | RouterOS (firmware based) |
| Power Supply | External Power Adapter |

9. WARRANTY AND SUPPORT

For warranty information and technical support, please refer to the warranty card included with your product or visit the official TOTOLINK website. Support resources typically include FAQs, troubleshooting guides, and contact information for customer service.

Related Documents - A3002RU-V2

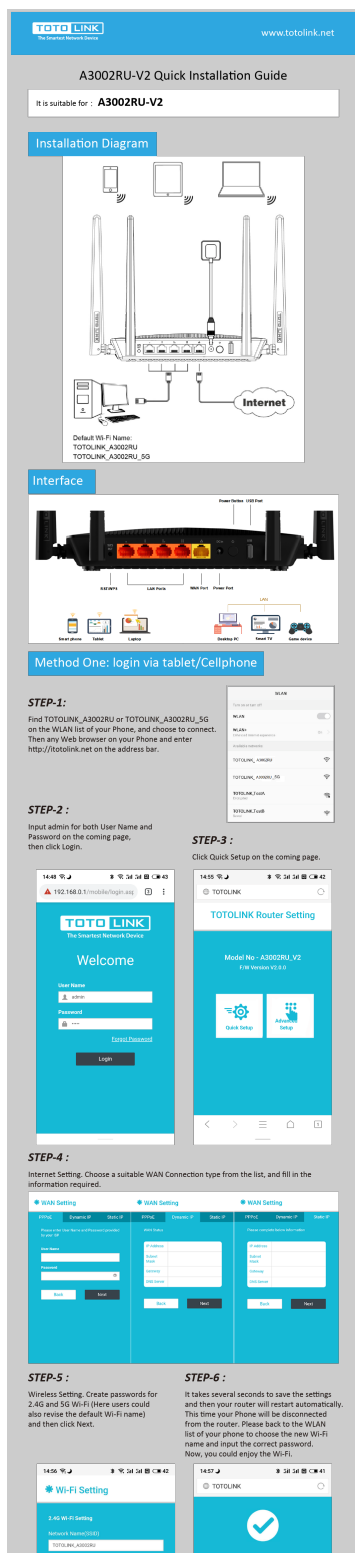
| | |
|---|--|
|  | TOTOLINK A3002RU V3 Quick Installation Guide This guide provides instructions for the hardware installation and configuration of the TOTOLINK A3002RU V3 Wi-Fi router, covering setup via phone and computer. |
|  | TOTOLINK AX1500 Wireless Dual Band Gigabit Router Quick Installation Guide Quick Installation Guide for the TOTOLINK AX1500 Wireless Dual Band Gigabit Router (Models X2000R, X2000RU), covering hardware installation, phone configuration, EasyMesh setup, and FAQs. |
|  | TOTOLINK X5000R AX1800 Wireless Dual Band Gigabit Router Quick Installation Guide A quick installation guide for the TOTOLINK X5000R AX1800 Wireless Dual Band Gigabit Router, covering installation, configuration via phone or computer, and FAQs. |
|  | TOTOLINK A3300R AC1200 Wireless Dual Band Gigabit Router - Features and Specifications Comprehensive details on the TOTOLINK A3300R AC1200 Wireless Dual Band Gigabit Router, covering its advanced features, hardware specifications, wireless capabilities, software functions, and package contents. Optimized for search engines. |
|  | TOTOLINK EX1800T AX1800 Dual Band Wi-Fi Range Extender Quick Installation Guide A comprehensive guide to setting up and installing the TOTOLINK EX1800T AX1800 Dual Band Wi-Fi Range Extender. Learn how to connect via phone or WPS, optimize placement, and find answers to common questions. |



[How to Upgrade TOTOLINK Router Firmware](#)

A comprehensive guide detailing the step-by-step process for upgrading the firmware on various TOTOLINK router models, including essential prerequisites and important notices for a successful update.

Documents - TOTOLINK – A3002RU-V2

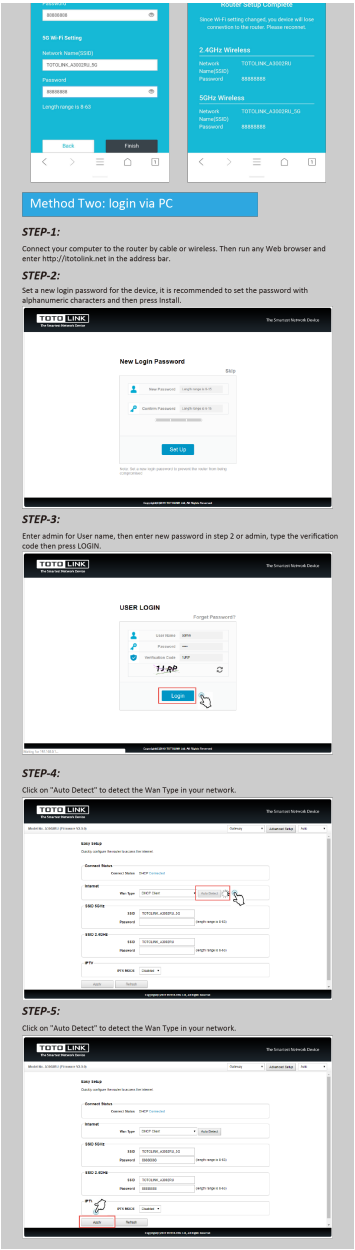


[\[pdf\]](#) [Installation Guide](#) [Frequently Asked Questions](#) [Guide](#) [Diagram](#)

FAQ 208 A3002RU V2 Quick Installation Guide 41e15d2f12f3dc3d0acd75aa817a82f3 totolink net 80 data
upload 20200429

www.totolink.net **A3002RU-V2** Quick Installation Guide It is suitable for **A3002RU-V2**

Installation Diagram Interface Method One: login via tablet/Cellphone STEP-1: Find TOTOLINK_A3002RU or TOTOLINK_A3002RU_5G on the WLAN list of your Phone, and choose to connect. Then any Web browser on your Phone and...

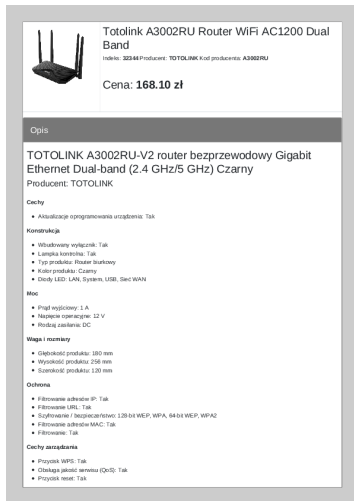


[pdf] Quick Start Guide Guide

PowerPoint Presentation IBITS Fibre Account Manager Christie Kotze Hướng Dẫn Sử Dụng Tiếng Anh Router Wifi Chuẩn AC1200 Bằng Tần Kép Totolink A3002RU V2 Gigabit Đen Hương Đan Su Dung Tieng cdn tgdd vn Products 3 225021 HDSO |||

FIBRE ROUTER SETUP GUIDE TOTOLINK **A3002RU-V2** <http://totolink.net/> STEP 1 PLEASE NOTE THAT YOU WILL NEED A SECOND ETHERNET / LAN CABLE VERY IMPORTANT: DO NOT REMOVE LAN CABLE CONNECTED BETWEEN YOUR ROUTER S WAN PORT AND THE ONU Connect your router to your computer STEP 1.1 Insert the one end of th...





[pdf]

Totolink A3002RU Router WiFi AC1200 Dual Band Sklep internetowy stylom.pl totolink a3002ru router wifi ac1200 dual band 32344 upload files product |||

Totolink A3002RU Router WiFi AC1200 Dual Band Indeks: 32344 Producent: TOTOLINK Kod producenta: A3002RU Cena: 168.10 zł Opis TOTOLINK **A3002RU-V2** router bezprzewodowy Gigabit Ethernet Dual-band 2.4 GHz/5 GHz Czarny Producent: TOTOLINK Cechy Aktualizacje oprogramowania urządzenia: Tak Konstrukcja Wbu...

lang:pl score:31 filesize: 1.47 M page_count: 4 document date: 2022-08-03



[pdf] Datasheet

A3002RU V2 datasheet Ver1 0 Download Datasheet TOTOLINK AC1200 Wireless Dual Band Gigabit Router Help Tech Co Ltd helptechco files |||

www.totolink.net AC Wireless Dual Band Gigabit Router A3002RU .PEFM/P 867Mbps 300Mbps 11ac 1167Mbps Phone UI Full Gigabit WAN MU-MIMO Technology Overview AC1200 Wireless Dual Band Gigabit Router Model No. A3002RU_V2 A3002RU_V2 is a wireless dual band gigabit router which complies with the latest... lang:en score:15 filesize: 417.93 K page_count: 5 document date: 2020-12-11



[pdf] Datasheet

A3002RU V2 datasheet Ver1 Router TOTOLINK V 2 Wireless AC1200 Dual Band Gigabit Lifetime Forever6698f47d3e7c6c34f8bd7916cd3735766698f47d3e7c6c34f8bd7916cd373576totolink net data upload 20191008 6698f47d3e7c6c34f8bd7916cd373576totolink 6698f47d3e7c6c34f8bd7916cd373576 Forevertotolink K 318a8406d356f30f0fd0c61117ff371461656960515 131005881totolink ||| www.totolink.net AC Wireless Dual Band Gigabit Router A3002RU .PEFM /P 867Mbps 300Mbps 11ac 1167Mbps Phone UI Full Gigabit WAN MU-MIMO Technology Overview AC1200 Wireless Dual Band Gigabit Router Model No. A3002RU_V2 A3002RU_V2 is a wireless dual band gigabit router which complies w... lang:en score:14 filesize: 2.53 M page_count: 5 document date: 2019-10-08