

Manuals.plus /

- › TMH /
- › TMH 48W Square LED Work Light Flood Lamp Instruction Manual

TMH TMH-LED-48W 60

TMH 48W Square LED Work Light Flood Lamp Instruction Manual

Brand: TMH | Model: TMH-LED-48W 60

1. PRODUCT OVERVIEW

The TMH 48W Square LED Work Light Flood Lamp is designed to provide powerful and reliable illumination for a wide range of vehicles and applications. Featuring high-intensity LEDs, a durable aluminum housing, and an IP67 waterproof rating, this light is built to withstand challenging environments and deliver consistent performance.



Figure 1: Overview of ten TMH 48W Square LED Work Lights.

2. SAFETY INFORMATION

Please read and understand all safety instructions before installing or operating this product. Failure to follow these instructions may result in electrical shock, fire, serious injury, or property damage.

- Always disconnect power before installation or maintenance.
- Ensure proper wiring and connections to prevent short circuits.
- Do not look directly into the light when it is illuminated, as it may cause eye damage.
- Keep out of reach of children.
- Consult a qualified professional for installation if you are unsure about any steps.

3. PACKAGE CONTENTS

Verify that all components are present before beginning installation:

- TMH 48W Square LED Work Light (Quantity: 10)
- Mounting Brackets
- Screws, Nuts, and Washers

4. SETUP AND INSTALLATION

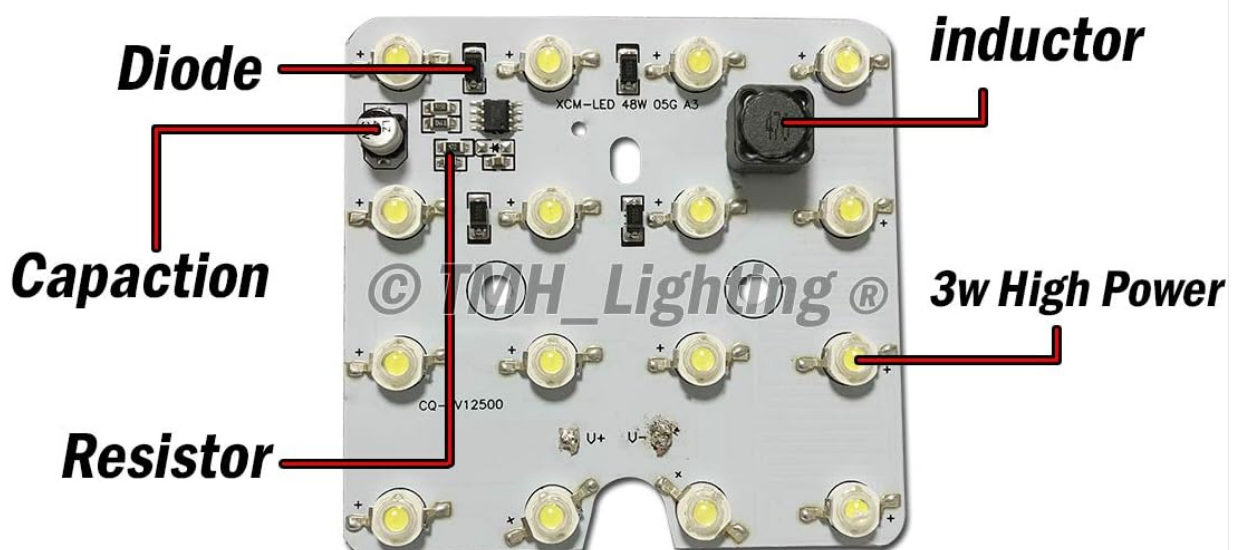
This section provides general guidelines for installing your TMH 48W Square LED Work Light. Specific installation may vary depending on your vehicle type and desired mounting location.

4.1 Component Identification

High Quality Material

...Big difference

| | |
|------------------------|--|
| Circuit | Thickness 1.6 mm, Aluminum |
| Volt | 10-30v DC |
| Soldering paste | High Temperature No Pb solder Paste |



4.2 Mounting the Light

1. Select a suitable mounting location on your vehicle that provides optimal light coverage and does not obstruct visibility or other vehicle functions.
2. Attach the mounting bracket to the light using the provided screws and washers. The bracket allows for 180-degree rotation for adjustable beam direction.
3. Secure the light assembly to your chosen location on the vehicle using appropriate hardware. Ensure the light is firmly attached to prevent movement during operation.

Your browser does not support the video tag.

Video 1: Demonstration of mounting and installation for the TMH 16 LED Square Work Light. This video illustrates the general installation process for similar LED work lights.

4.3 Wiring Connections

- Connect the red wire from the light to the positive (+) terminal of your 12V-24V DC power source.
- Connect the black wire from the light to the negative (-) terminal or a suitable ground point on your vehicle.
- Ensure all connections are secure and insulated to prevent short circuits and corrosion.

5. OPERATING INSTRUCTIONS

Once properly installed, the TMH 48W Square LED Work Light is ready for operation.

- Activate the light using the switch connected to your vehicle's electrical system.
- The light provides a 60-degree flood beam pattern, ideal for wide area illumination.
- The cool white light (6000K) ensures clear visibility.



Figure 3: Illustration of the 60-degree flood beam pattern provided by the light.

6. MAINTENANCE

To ensure optimal performance and longevity of your LED work light, follow these maintenance guidelines:

- **Cleaning:** Periodically clean the lens with a soft cloth and mild soap solution to remove dirt and debris. Avoid abrasive cleaners that could scratch the lens.
- **Inspection:** Regularly inspect wiring and connections for any signs of wear, corrosion, or damage. Tighten any loose connections.
- **Housing:** The aluminum housing is designed for durability and heat dissipation. Ensure it remains free from obstructions that could impede airflow.



Figure 4: The light features an IP67 waterproof rating, ensuring durability in harsh environments.

7. TROUBLESHOOTING

If you encounter issues with your TMH 48W Square LED Work Light, refer to the following common troubleshooting steps:

| Problem | Possible Cause | Solution |
|--------------------------|--|---|
| Light does not turn on | No power, loose connection, faulty wiring, blown fuse. | Check power source, inspect all wiring connections, replace fuse if necessary. |
| Light flickers or is dim | Insufficient power, loose connection, voltage drop. | Verify adequate power supply, tighten connections, check for proper gauge wiring. |
| Moisture inside lens | Seal compromise (unlikely with IP67). | Contact customer support if moisture persists after drying. |

8. SPECIFICATIONS

| Feature | Detail |
|---------------------|--|
| Brand | TMH |
| Model Number | TMH-LED-48W 60 |
| Wattage | 48 watts |
| Voltage | 12V-24V DC |
| Brightness | 3850 lumens |
| Color Temperature | 6000K (Cool White) |
| Beam Angle | 60 Degree Flood |
| Life Span | 50,000 hours |
| Water Resistance | IP67 Waterproof |
| Material | Aluminum |
| Dimensions | 4.3 x 4.3 inches (approximate, based on image) |
| Number of Pieces | 10 (in this pack) |
| Automotive Fit Type | Universal Fit |

9. WARRANTY INFORMATION

This TMH product comes with a 1-year warranty. Please retain your proof of purchase for warranty claims. The product is an Original TMH Product.

10. CUSTOMER SUPPORT

For further assistance, technical support, or warranty inquiries, please contact TMH customer service through the retailer where the product was purchased or visit the official TMH website.

Online Resources: TMH Store on Amazon